

**ASB MUTIARA 8**

**3,200BHP Anchor Handling Tug**



**GENERAL PARTICULARS**

Flag	:	Malaysia
Class	:	BV
Year Built	:	2009
Notation	:	I ✕ Hull ✕ Mach Tug, Special Service
Official No	:	334357
Call Sign	:	9MLU9
Imo No	:	955491

**PRINCIPAL DIMENSIONS**

Length Moulded	:	36.00m
Breadth Moulded	:	10.40m
Depth Moulded	:	5.00m
Design Draft	:	4.00m
GRT / NRT	:	453 / 135

**MACHINERY**

Main Engine	:	2 x Cummins KTA 50-M2 1600BHP @ 1800 rpm
Generator	:	2 x Cummins 240KW 415V/3/50Hz
Gearbox	:	Reintjes Gearbox Ratio 5.95:1
Bow Thruster	:	3 Tons, electric driven, maker: ATB Sever
Steering Gear	:	Electro Hydraulic approx 3t.m x 35 deg x 2 Electro Hydraulic Steering Gear
Propulsion System	:	4 Blade Bronze, fixed pitch propellers with fixed nozzles

**PERFORMANCE AND CONSUMPTION**

Bollard Pull	:	40 Tons approx
Maximum Speed	:	12 Knots approx
Economical Speed	:	9.5 Knots approx
Fuel Consumption	:	10.5 Tons/day approx
Deck Strength	:	2.5 Tons/m <sup>2</sup>
Deck Space	:	100m <sup>2</sup>



## TIONG WOON OFFSHORE PTE. LTD.

-A member of Tiong Woon Corporation Holding Ltd-

### ASB MUTIARA 8

### 3,200BHP Anchor Handling Tug

#### DECK MACHINERY & EQUIPMENT

Anchor Windlass	:	1 x Electric-Hydraulic anchor windlass c/w double gypsy drum
Anchor	:	2 x 572kg stockless anchor
Anchor Chain	:	2 x Dia. 24mm studlink chains
Electro Tugger Winch	:	1 x 5T @ 15 m/min
Hyd Capstan	:	1 x 5T Electro Hyd. capstans with pulling force of 5 tons @ 15 m/min
Deck Crane	:	1 x Hyd. Crane @ 1.5 Ton S.W.L. @ 9 m radius
Towing Winch	:	1 x Hyd. double drum
Wire Size	:	Dia. 44 mm x 600 m length
Line Pull (1 <sup>st</sup> )	:	40 Tons
Brake Holding	:	80 Tons on 1 <sup>st</sup> layer for each drum
Tow Pin	:	1 x 200Ton
Shark Jaw	:	1 x 200Ton
Stern Roller	:	1 x 150MT S.W.L.

#### TANK CAPACITY

Fuel Capacity	:	299 Tons approx
Fresh Water Capacity	:	100 Tons approx
Lube Oil	:	3.0 Tons approx

#### ACCOMODATION

Berth	:	2 x 1 man cabin = 2 men
	:	1 x 2 men cabin = 2 men
	:	3 x 4 men cabin = <u>12 men</u>
Total		<u>16 men</u>
Sewage Plant	:	capacity 16 men

#### NAVIGATION & COMMUNICATION EQUIPMENT

Radar, Magnetic Compass, Echo Sounder, DGPS, Autopilot, GMDSS, MF/HF, VHF-DSC, Radar responder, EPIRB, Navtex Receiver, Inmarsat-C, SSB, SART, AIS

#### FIREFIGHTING EQUIPMENT

FIFI ½ System  
As per SOLAS requirement

#### LIFE SAVING APPARATUS

As per SOLAS requirement

Specifications are believed to be correct but not guaranteed. Updated on 13<sup>th</sup> September 2019

Page 2 of 3

#### **Tiong Woon Offshore Pte. Ltd.**

**Co. Reg. No. 200304922M**

No 15 Pandan Crescent, Singapore 128470

Tel: (65) 62617888 Fax: (65) 6777 4544

#### **Tiong Woon Corporation Holding Ltd**

(Group Head Office)

**Co. Reg. No. 199705837C**

No 15 Pandan Crescent, Singapore 128470

Tel: (65) 6261 7888 Fax: (65) 6777 4544

Crane & Transport Booking Hotline: (65) 6777 8882

Email: enquiry@tiongwoon.com

Webpage: www.tiongwoon.com



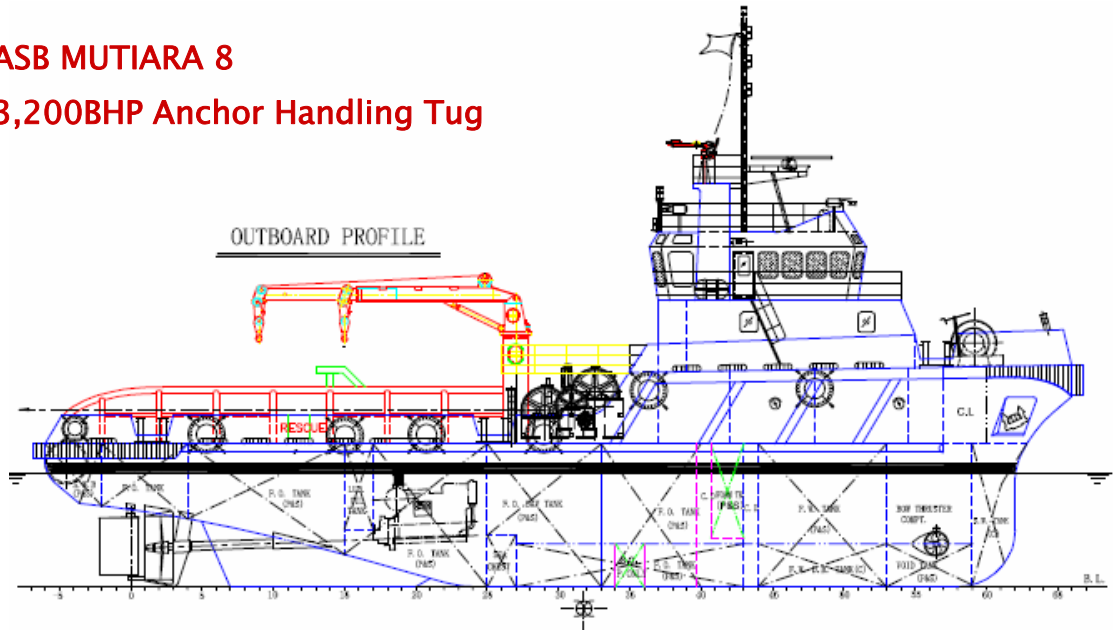


# TIONG WOON OFFSHORE PTE. LTD.

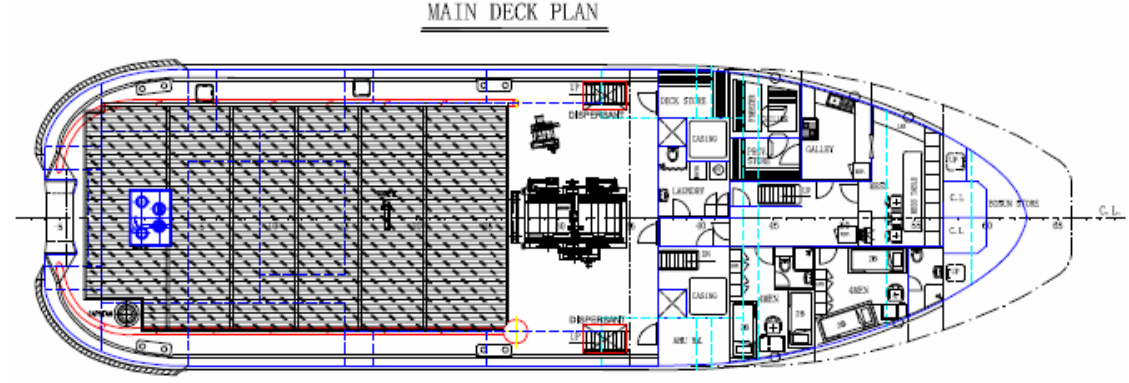
-A member of Tiong Woon Corporation Holding Ltd-

## ASB MUTIARA 8

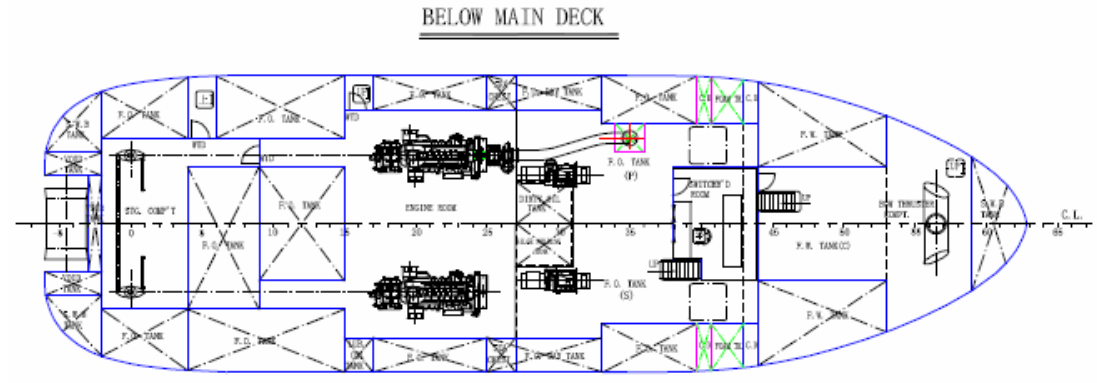
## 3,200BHP Anchor Handling Tug



OUTBOARD PROFILE



MAIN DECK PLAN



BELOW MAIN DECK

Specifications are believed to be correct but not guaranteed. Updated on 13<sup>th</sup> September 2019

Page 3 of 3

**Tiong Woon Offshore Pte. Ltd.**  
Co. Reg. No. 200304922M  
No 15 Pandan Crescent, Singapore 128470  
Tel: (65) 62617888 Fax: (65) 6777 4544

**Tiong Woon Corporation Holding Ltd**  
(Group Head Office)  
Co. Reg. No. 199705837C  
No 15 Pandan Crescent, Singapore 128470  
Tel: (65) 6261 7888 Fax: (65) 6777 4544  
Crane & Transport Booking Hotline: (65) 6777 8882  
Email: enquiry@tiongwoon.com  
Webpage: www.tiongwoon.com

