

液压式履带起重机

HYDRAULIC CRAWLER CRANE

FCC55C

辽宁抚挖重机械股份有限公司

地址：辽宁省抚顺市顺城区双阳路2号

邮编：113126

网址：www.cnfuwa.com

销售公司电话：+86-413-7647 989/7642 419

传真：+86-413-7642 419

售后服务中心电话：+86-413-7641 727

电子信箱：sale@cnfuwa.com

进出口公司电话：+86-413-7649 117/7642 558

传真：+86-413-7642 766

电子信箱：export@cnfuwa.com

免费服务电话：800-890-0009

FUWA HEAVY INDUSTRY CO.,LTD

Add: No.2 Shuangyang Road, Shuncheng District, Fushun Liaoning, China

p.c.113126

http://www.cnfuwa.com

China Market Sale Dept. Tel: +86-413-7647 989/7642 419

Fax: +86-413-7642 419

After sale Service Dept. Tel: +86-413-7641 727

E-mail: sale@cnfuwa.com

Import & Export Dept. Tel: +86-413-7649 117/7642 558

Fax: +86-413-7642 766

E-mail: export@cnfuwa.com

技术参数如有更改恕不另行通知

Specifications may vary without prior notice





目录 Content

安全装置	Safety Devices	01-02 >>
详细说明	Specifications	03-04 >>
臂杆组合	Boom Combination	05 >>
主要技术参数	Technical Data	06 >>
总体尺寸	Overall Dimensions	06-07 >>
主臂和副臂组合	Boom and Jib Combinations	08 >>
标准主臂工况载荷表	Load Chart (Standard Boom)	09 >>
标准主臂工况作业范围	Working Range(Standard Boom)	10 >>
固定副臂工况载荷表	Working Range(Fixed Jib)	11-14 >>
主臂带副臂时主臂工况载荷表	Load Chart (Boom attached with jib)	15-16 >>
固定副臂工况作业范围	Working Range(Fixed Jib)	17 >>
载荷表说明	Notes for Load Chart	18 >>
主要零部件运输尺寸	Dimensions for Transportation	18-20 >>



安全装置

吊钩和臂架防过卷装置	吊钩和臂架防过卷装置是用于防止因过卷导致的机器损坏或后翻事故。
吊钩防过卷装置	当起重钩提升到一定高度时, 将重锤托起, 则微动开关由弹簧复位, 开关接点断开, 控制继电器动作使蜂鸣器报警, 报警指示灯闪亮, 同时, 控制器锁定起重钩的提升, 起重钩提升动作自动停止。
臂架防过卷装置	臂上限角度由力矩限制器和主臂上限位开关检测控制。 起重工况 当主臂 \geq 上限位角度 80° 时, 力矩限制器声光连续报警, 并输出信号 主臂停止升臂。同时, 主臂上限位开关动作, 主臂上限位开关回路被切断, 主臂停止升臂。
力矩限制器	限制器对起重机作业进行实时监控, 在各种工况下, 通过按键设置工况参数。 当额定起重力矩的 $0\% \leq$ 起重力矩 $<$ 额定起重力矩的 90% 时, 力矩限制器显示屏上, 力矩百分比条形码绿色点亮, 限制器无声音报警。当额定起重力矩的 $90\% \leq$ 起重力矩 $<$ 额定起重力矩的 100% 时, 力矩限制器显示屏上, 力矩百分比条形码黄色预警, 同时限制器发出声音断续报警。当额定起重力矩的 $100\% \leq$ 起重力矩 $<$ 额定起重力矩的 105% 时, 力矩限制器显示屏上, 力矩百分比条形码红色报警, 同时限制器发出声音连续报警。当起重力矩 \geq 额定起重力矩的 105% 时, 力矩限制器显示屏上, 力矩百分比条形码红色报警, 限制器发出声音连续报警, 同时输出信号。主、副钩停止提升, 臂停止增幅动作。
卷筒、回转制动器及其锁定装置	制动器 本起重机设有: 主、副卷筒制动器、变幅卷筒制动器、回转制动器。 锁定装置 本起重机设有: 主、副卷筒棘爪锁定装置、变幅卷筒棘爪锁定装置、回转锁定装置。
重力传感器、角度传感器	臂架上设有重力传感器, 用于检测拉力。 主臂根部装有角度传感器, 用于检测主臂的角度。 主臂架根处设有机械式角度盘, 用来显示臂架当前角度。
行走报警	蜂鸣器报警。
主臂上限位报警	主臂到上限位位置时, 蜂鸣器报警。
主、副提升限位报警	主、副提升过卷时, 蜂鸣器报警。

Safety Device

Hook and boom over-hoist prevention devices	Hook and boom over-hoist prevention devices are used for preventing the crane from the accidents because of the over-hoist.
Hook over-hoist prevention device	When the hook lifts up to certain height and touches the plumb, the limit switch shall be disengaged by the reposition spring, and then the switch cuts off the control circuit. The control relay makes the buzzer alarm and the indicator lights up. At the same time, the rise of the hook will stop automatically.
Boom over-hoist prevention device	The boom upper limit angle is controlled by moment limiter and boom upper limit switch. When the boom upper limit angle is more than 80° , the moment limiter will continuously alarm and send out the signal. The rise of boom will stop. At the same time, the limit switch is cut off. The boom stops rising.
Moment limiter	The device monitors the work of the crane. You can press the key to set the parameters of all working conditions. When the actual load is less than 90% of rated load, the screen shows load proportional bar in green color, and no warning alarm from the safe load indicator. When the actual load exceeds 90% of rated load while is less than 100% of rated load, the screen shows yellow color and an intermittent warning alarm sounds. When the actual load exceeds 100% of rated load while less than 105% of rated load, the monitor screen shows red color and the safe load indicator gives continuous warning alarm, and output control signal. When the actual load exceeds 105% of rated load, the monitor screen shows red color and gives out a continuous warning alarm, at the same time the safe load indicator put out control signal to stop the hoisting action of main and auxiliary hooks and boom.
Brakes and locking devices	Brakes: the brakes on the main and aux. drums, the brakes on the main and aux, derricking drums, swing brake. Locking devices: main and auxiliary winch pawls, main derricking drum pawls and swing locking device.
Pull sensor, angle sensor	The pull sensor is installed on boom to test the pull. The angle sensor is installed on the boom foot to test boom angle. The mechanical angle scale is installed on the boom foot to show the current angle of boom when the crane is lifting the load.
Travel alarm device	The buzzer alarms.
Boom upper limit alarm device	The buzzer will flash to alarm when boom reaches the upper limit.
Main and aux. winch limit alarm device	The buzzer will flash to alarm when main winch or aux. winch over hoists.



详细说明

上车结构

动力装置

型号 6BT5.9-C148进口康明斯涡轮增压发动机
类型 水冷式, 直喷, 带涡轮增压器。
排量 5.9L
额定功率 132kw/2000rpm
最大扭矩 597N.m/1600rpm
燃油油箱容量 240L
液压油箱容积 360L

液压系统

液压系统采用A8V分功率变量双泵、M8主阀及定量马达组成的开式回路。双泵双回路分功率控制, 液压油独立冷却系统, 回转独立系统, 可实现多种复合动作的组合。

控制系统

控制系统采用先导比例控制系统, 主泵的流量随着先导阀的输出压力变化而变化, 可实现无级变速, 同时还具有微速功能。

主、副提升卷扬装置

主、副提升卷扬装置, 由定量柱塞马达通过行星减速机驱动, 操纵主、副卷手柄, 可以实现卷筒的两个方向的转动。即实现了主、副钩提升和下降动作。有带式制动器和常闭式离合器, 可实现空钩下放功能操作。

主提升卷扬装置

卷筒: 节圆直径 $\phi 420\text{mm}$
钢丝绳直径: $\phi 20\text{mm}$
钢丝绳长度: 170m
最大绳速: 80m

副提升卷扬装置

卷筒: 节圆直径 $\phi 420\text{mm}$
钢丝绳直径: $\phi 20\text{mm}$
钢丝绳长度: 120m
最大绳速: 90m

主臂变幅系统

由液压定量柱塞马达通过行星减速机驱动。操纵变幅手柄, 可实现卷筒两个方向的转动, 即实现了起重臂提升和下降动作。带式常闭制动器。
卷筒: 节圆直径 $\phi 430\text{mm}$
钢丝绳直径: $\phi 16\text{mm}$
钢丝绳长度: 150m
最大绳速: 52m

回转系统

由马达通过行星减速机带动齿轮驱动, 可旋转360°
速度: 3.2转/分钟
两个位置止动锁锁定。

驾驶室

宽度920mm司机室, 带有空调和暖风机、带后视镜和雨刷器、带力矩限制器、带立体音响等。全方位可调座椅, 带有干粉灭火器等。

平衡重

平衡重由前、后两块组成, 前平衡重重量为7.7吨, 后平衡重重量为9.8吨。

A型架

A型架是伸缩式的, 在作业时, 必须把A型架升高, 在运输时, 可以降低A型架。

下车结构

底座

全部为焊接, 通过螺栓与回转支撑连接在一起。

支重轮装置

每侧各有10个, 所有的支重轮均装有铜套和浮动式密封以及耐磨润滑油。

履带板

左、右履带行走装置共有118块履带板, 每块履带板的宽度为760mm。履带板的张紧程度可以通过液压千斤顶进行调节, 调节垫片的位置达到理想的张紧度。

履带动力

独立的液压驱动系统嵌入履带架内, 每侧液压驱动系统包含了一个液压马达并通过行星减速机带动驱动轮。液压马达和减速机嵌入履带结构内, 不超出履带宽度。

行走速度

0~1.3千米/小时。

爬坡能力

40% (22°)

作业装置

臂架主铰管采用高强度钢管。

主臂

臂架为中等截面, 两端变截面的空间桁架式结构, 钢管焊接。
标准主臂长度为13米~52米。

固定副臂

固定副臂与主臂有两种角度: 10° 和30°
主臂和副臂组成: 主臂长度为22米~43米, 副臂长度为9.15米~15.25米;
主臂+副臂的最大长度: 43米+15.25米=58.25米。

吊钩

50吨吊钩
35吨吊钩
15吨吊钩
6吨吊钩

Safety Device

Superstructure

Power device

Model: 6BT5.9-C148, Cummins
Type: water-cooling, direct fuel injection, with turbocharger actuator
Displacement: 5.9L
Rated power: 125kw/2000rpm
Max torque: 597N.m/1600rpm
Capacity of fuel tank: 240L
Capacity of hydraulic oil tank: 360L

Hydraulic system

The system is provided with two A8V variable displacement pump, M8 main valve and fixed displacement motor. Independent cooling system is applied for hydraulic oil and independent system is for slewing operation. Many combined operations can be realized simultaneously.

Control system

Controlled by the electrical proportion pilot; the flow of main pump may vary with the output pressure of pilot valve. Infinitely variable and low speed can be realized.

Main winch and aux. winch

Driven by fixed plunger motors through the planetary reduction gears; hook hoisting and lowering operations can be realized by operating the joysticks. The winches are equipped with band-type brake and often closed clutch. Free fall can be realized.

Main winch

Diameter of the drum: $\phi 420\text{mm}$
Diameter of wire rope: $\phi 20\text{mm}$
Length of wire rope: 170m
Max. rope speed: 80m/min

Aux. winch

Diameter of the drum: $\phi 420\text{mm}$

Diameter of wire rope: $\phi 20\text{mm}$
Length of wire rope: 120m
Max. rope speed: 90m/min

Boom derricking system

This system is driven by fixed plunger motor through the planetary reduction gear. Boom rising and lowering operation can be realized by operating the control joystick. The brake is band-type and often closed.
Diameter of the drum: $\phi 430\text{mm}$
Diameter of wire rope: $\phi 16\text{mm}$
Length of wire rope: 150m
Max. rope speed: 52m/min

Swing system

The swing system provides 360° rotation. The swing unit is driven by hydraulic motor through planetary reduction gear.
Speed: 3.2r/min
Two position lock.

The cabin

The width of the cabin is 920mm. The cabin is equipped with air-conditioner, heater, rear view mirror, wiper and stereo. In the cabin, there are large-screen electronic monitors and moment limiter, fire extinguisher. The chair can be adjusted.

Counterweight

The counterweight consists of two pieces: front counterweight of 7.7t and rear counterweight of 9.8t.

A-frame

A-frame can be extended and retracted. It should be extended and raised when working. A-frame should be lowered while transport.

工况符号

The symbols of working conditions



标准主臂工况
Standard boom



加长主臂工况
Runner



固定副臂工况
Fixed jib

Undercarriage

Lower frame

Steel-welded frame and connected with slewing support through bolts.

Track rollers

Each side has 10 track rollers. All track rollers are equipped with bushings and seals. They are coated with lubricating oil.

Track shoe

The left and right crawlers have 118 track shoes. The width of track shoe is 760mm. The tension of track shoe can be adjusted by the hydraulic jack. Adjusting the shim makes the crawler in ideal tension conditions.

Crawler drive

Independent hydraulic propel driver is built into each crawler side frame. Each drive consists of a hydraulic motor propelling a drive sprocket through a planetary reduction gear. Hydraulic motor and reduction gear are built into the crawler side frame within the shoe width.

Travel speed

0~1.3km/h

Gradeability

40% (22°)

The attachment

Main chords are with high strength.

Boom

The insert section has the equal cross section. The top and foot have the variable cross sections. The boom is the lattice structure welded with steel pipes. Length of standard boom is 13~52m

Fixed jib

Two kinds of angle between boom and fixed jib: 10° and 30°
Boom and fixed jib combination:
main boom: 22~43m; fixed jib: 9.15m~15.25m
Max. length of boom plus jib: 43m+15.25m=58.25m

Hook blocks

50T hook block
35T hook block
15T hook block
6T hook block



臂杆组合

标准主臂

最大起重量: 55吨×3.5米
最大臂杆长度: 52米

Standard boom

Max.lifting capacity: 55t×3.5m
Max.boom length: 52



主臂 Boom
13m-52m

加长主臂

最大起重量: 5吨×4.3米
最大臂杆长度: 49米

Runner

Max.lifting capacity: 5t×4.3m
Max.boom length: 49



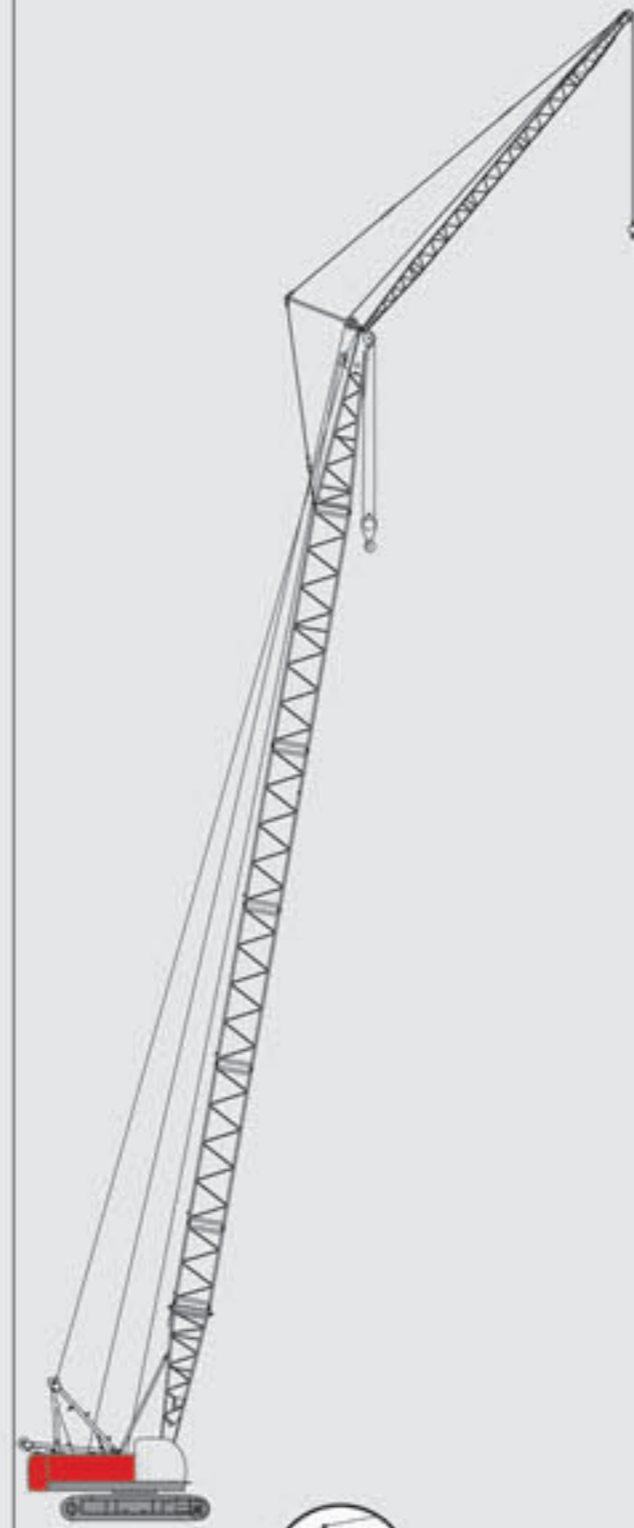
主臂 Boom
13m-49m

固定副臂

最大起重量: 5吨×19.7米
最大组合: 43米+15.25米

Fixed jib

Max.lifting capacity: 5t×19.7m
Max.combination: 43m+15.25m



主臂 Boom 副臂 Jib
22m-43m 9.15m-15.25m

主要技术参数

Technical Data

项 目	单 位	数 值	
最大额定起重量	t	55	
标准主臂长度	m	13~52	
固定副臂长度	m	9.15~15.25	
主臂+副臂最大度	m	43+15.25=58.25	
起重臂变幅角度	°	30~80	
吊钩配置	t	50/35/15/6	
工 作 速 度	钢丝绳速度	主卷提升、下降 副卷提升、下降 钢丝绳直径φ20	m/min ※高速80 低速40 高速90 低速45
		起重臂上升 起重臂下降 钢丝绳直径φ16	m/min 52 52
	回转速度	r/min	3.2
	行走速度	km/h	1.3
	爬坡能力(度)(带基本臂, 司机室置于后方)	°	40
	柴油机额定输出功率/转速	KW/r/min	132/2000
整机质量	t	50 (带基本臂50吨吊钩)	
接地压力	MPa	0.069	
配重质量	t	17.5	

注: 带※速度是随载荷的不同而变化。

Descriptions	Unit	Data	
Max. rated lifting capacity	t	55	
Length of standard boom	m	13~52	
Length of fixed jib	m	9.15~15.25	
Max. length of boom plus jib	m	43+15.25=58.25	
Boom angle	°	30~80	
Kinds of hook block	t	50/35/15/6	
Working speed	Rope speed	Hoist and lower of main winch Hoist and lower of aux. winch Rope diameter φ20	m/min ※High80 Low40 High90 Low45
		Boom rise Boom lower Rope diameter φ16	m/min 52 52
	Swing	r/min	3.2
	Travel	km/h	1.3
	Gradesability (with basic boom and the cab in the rear)	°	40
	Rated power output/rotation speed of diesel engine	KW/r/min	132/2000
Weight of the machine	t	50 (with basic boom and 50t hook block)	
Ground pressure	MPa	0.069	
Counterweight	t	17.5	

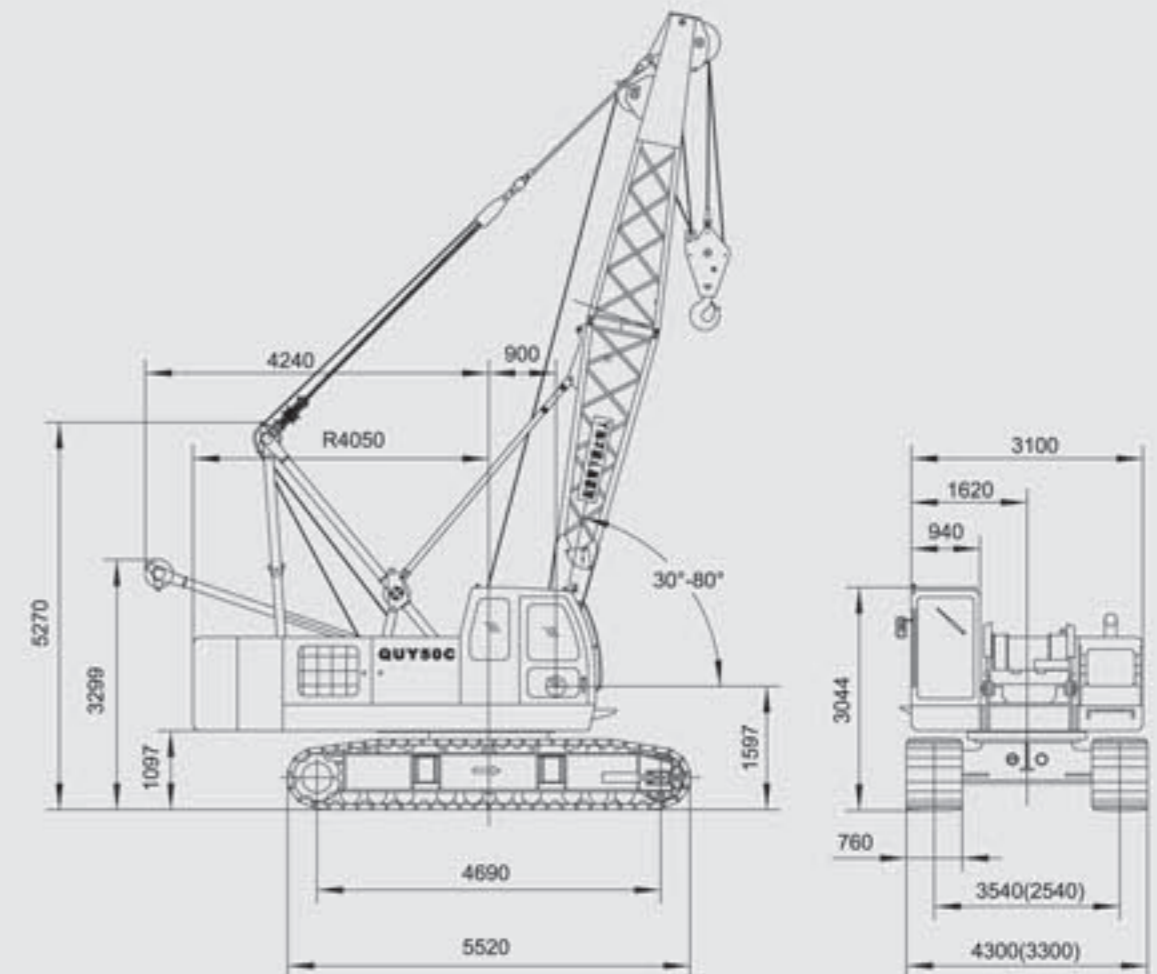
Note: Speed with※may vary with the load.

总体尺寸

Overall Dimensions

标准主臂

Standard boom

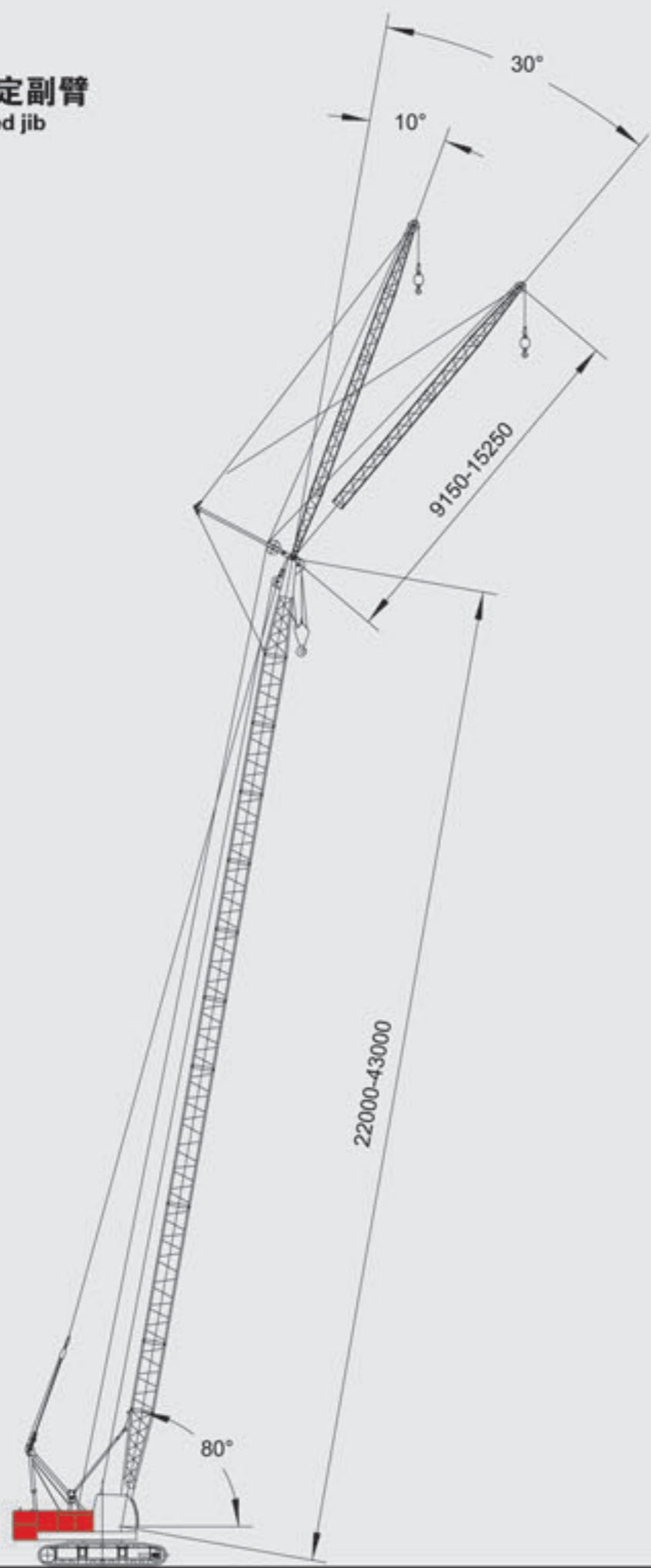




总体尺寸

Overall Dimensions

固定副臂
Fixed jib

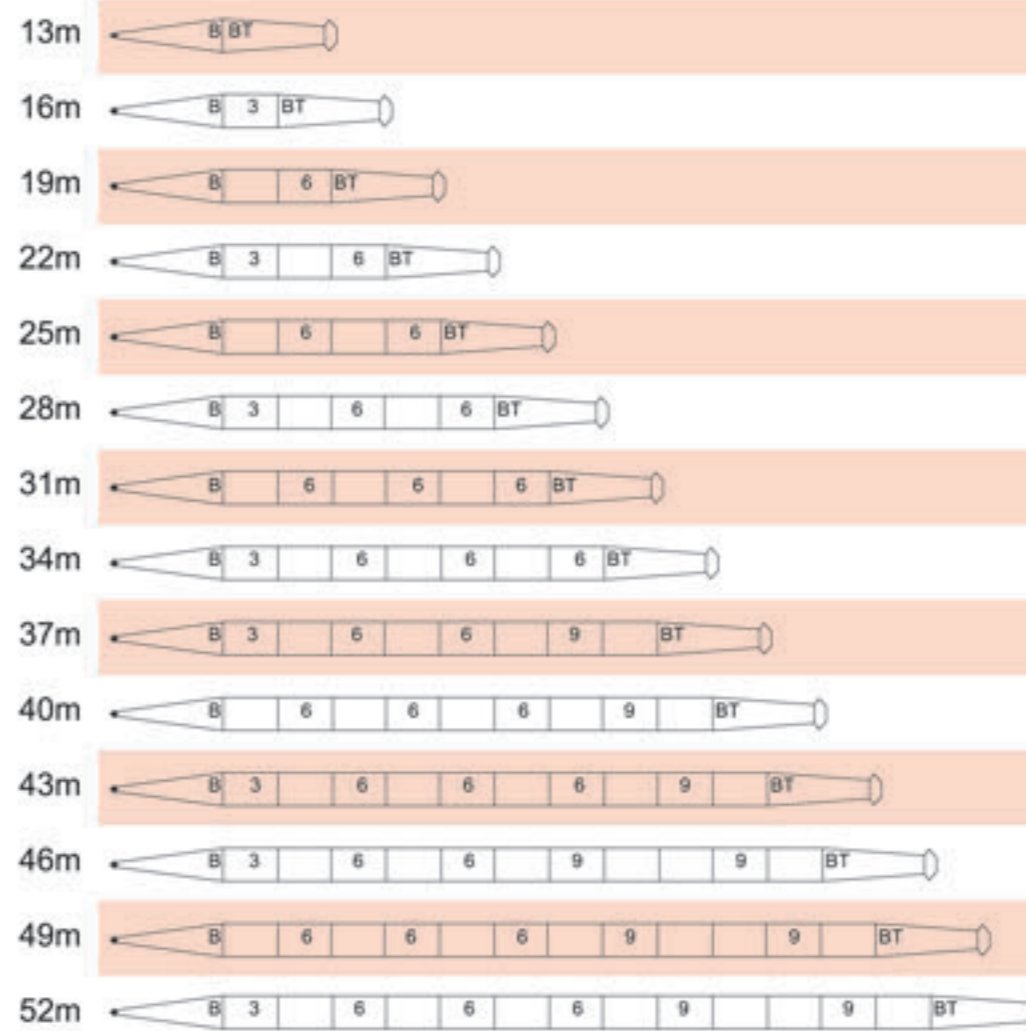


主臂和副臂组合

Boom and Jib Combinations

标准主臂工况臂节组合

Boom Combination



注解

符号	臂杆长度	备注
B	6.5米	6.5米下节臂
BT	6.5米	6.5米上节臂
3	3米	3米中间节臂
6	6米	6米中间节臂
9	9米	9米中间节臂

Note

Symbol	Boom length	Remarks
B	6.5m	6.5m boom foot
BT	6.5m	6.5m boom top
3	3m	3m boom insert
6	6m	6m boom insert
9	9m	9m boom insert

固定副臂工况臂节组合

Fixed Jib combinations

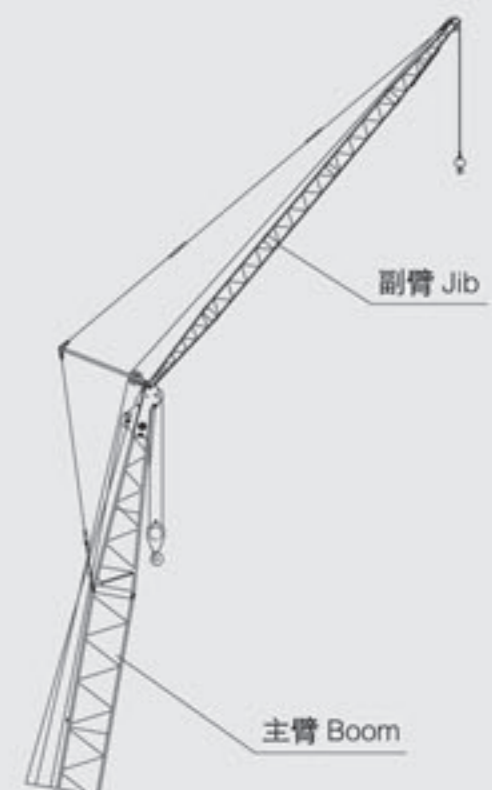
主臂长度 Boom length	副臂长度 Jib length	副臂组合 Jib combination
22m	9.15m	B 3.05 BT
43m	12.20m	B 3.05 3.05 BT
	15.25m	B 3.05 3.05 3.05 BT

注解

符号	臂杆长度	备注
B	3.05米	3.05米下节臂
BT	3.05米	3.05米上节臂
3.05	3.05米	3.05米中间节臂

Note

Symbol	Length	Remarks
B	3.05m	3.05m jib foot
BT	3.05m	3.05m jib foot
3.05	3.05m	3.05m jib insert





标准主臂工况载荷表

Load Chart (Standard Boom)

13m-52m 360° 17.5t

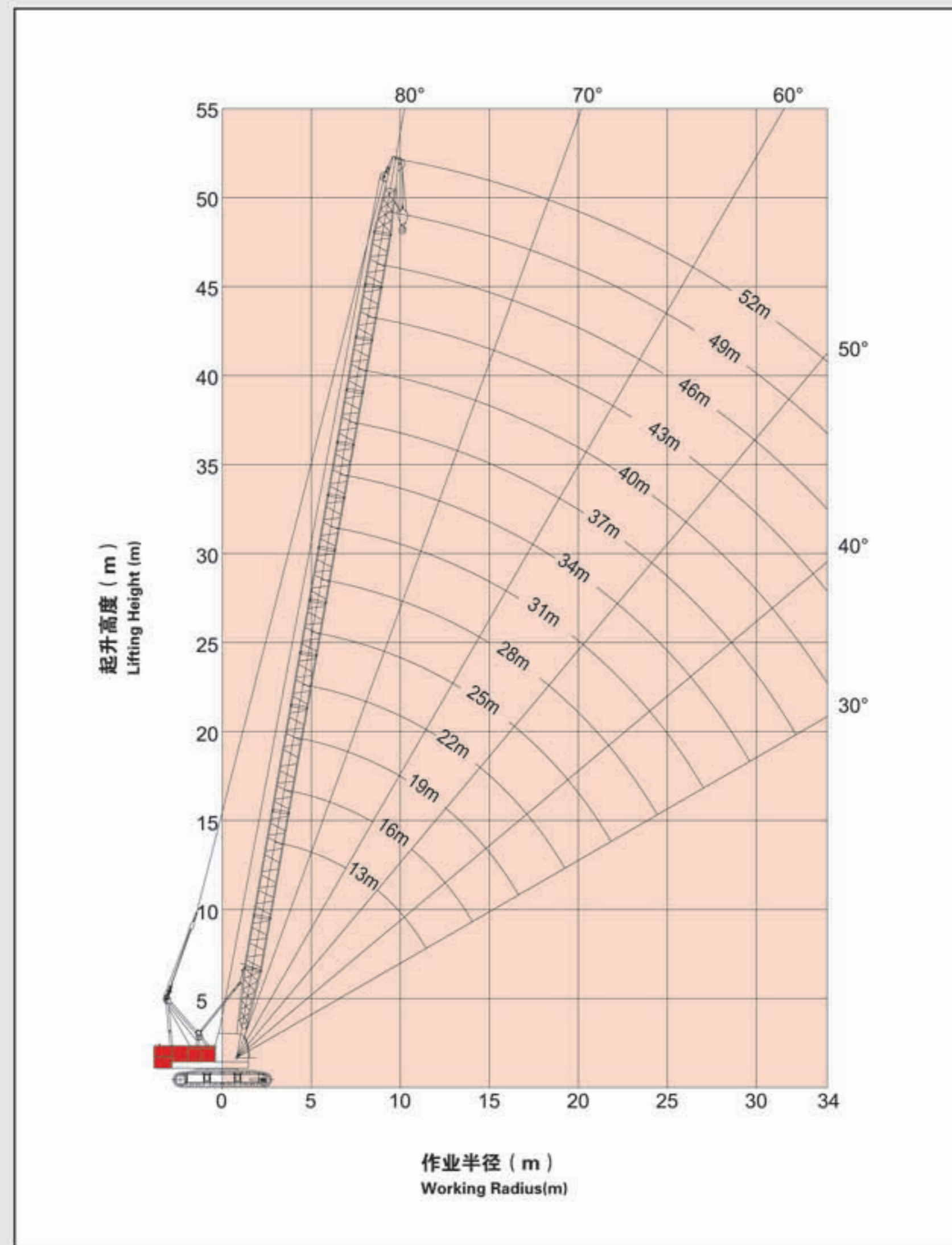
臂长 (m)	13.0	16.0	19.0	22.0	25.0	28.0	31.0	臂长 (m)	
3.5	55.00							3.5	
3.7	50.00							3.7	
4.0	45.80	4.1×44.2						4.0	
4.5	38.60	38.55	4.6×36.8					4.5	
5.0	32.10	32.00	31.90	5.15×30.2				5.0	
5.5	27.60	27.50	27.40	27.30	5.7×26.40			5.5	
6.0	24.60	24.50	24.40	24.20	24.10	6.2×22.80		6.0	
7.0	19.50	19.40	19.30	19.20	19.10	19.00	18.90	7.0	
8.0	16.20	16.10	16.00	15.90	15.70	15.50	15.40	8.0	
9.0	13.80	13.70	13.60	13.50	13.40	13.30	13.20	9.0	
10.0	12.10	12.00	11.90	11.80	11.70	11.60	11.50	10.0	
12.0	9.50	9.40	9.30	9.30	9.15	9.05	8.90	12.0	
14.0	12.3×9.25	7.80	7.70	7.60	7.50	7.40	7.30	14.0	
16.0		14.9×6.80	6.50	6.40	6.30	6.20	6.10	16.0	
18.0			17.5×5.60	5.50	5.40	5.30	5.20	18.0	
20.0				4.70	4.70	4.60	4.50	20.0	
22.0					4.10	4.00	3.90	22.0	
24.0						22.7×3.90	3.50	24.0	
26.0							25.3×3.20	26.0	
28.0								27.9×2.55	28.0
30.0									30.0
32.0									32.0
34.0									34.0

13m-52m 360° 17.5t

臂长 (m)	34.0	37.0	40.0	43.0	46.0	49.0	52.0	臂长 (m)
3.7								3.7
4.0								4.0
4.5								4.5
5.0								5.0
5.5								5.5
6.0								6.0
7.0								7.0
8.0	15.30	15.30						8.0
9.0	13.10	13.00	12.90	12.80				9.0
10.0	11.40	11.40	11.30	11.20	11.10	10.4×10.75		10.0
12.0	8.80	8.80	8.75	8.70	8.55	8.40	8.20	12.0
14.0	7.20	7.20	7.10	7.00	6.90	6.80	6.70	14.0
16.0	6.00	6.00	5.90	5.80	5.70	5.60	5.50	16.0
18.0	5.10	5.10	5.00	4.90	4.80	4.70	4.60	18.0
20.0	4.40	4.40	4.30	4.20	4.10	4.00	3.90	20.0
22.0	3.80	3.80	3.70	3.60	3.50	3.40	3.30	22.0
24.0	3.30	3.30	3.20	3.10	3.00	2.90	2.80	24.0
26.0	2.90	2.85	2.75	2.70	2.50	2.40	2.35	26.0
28.0	2.60	2.50	2.40	2.35	2.20	2.10	2.00	28.0
30.0	2.30	2.25	2.15	2.05	1.90	1.80	1.70	30.0
32.0	30.5×2.25	1.90	1.85	1.75	1.60	1.50	1.40	32.0
34.0		33.0×1.75	1.60	1.50	1.30	1.20	1.10	34.0

标准主臂工况作业范围





Working Range (Standard Boom)









固定副臂工况载荷表

Load Chart (Fixed Jib)





m	22.0						m
	9.15		12.20		15.25		
	10°	30°	10°	30°	10°	30°	
8.0	9.2 × 5.00						8.0
10.0	5.00		10.3 × 4.00		11.4 × 3.20		10.0
12.0	5.00	4.65	4.00		3.20		12.0
14.0	5.00	4.30	4.00	3.65	3.20		14.0
16.0	5.00	4.05	4.00	3.45	16.8 × 3.20	3.05	16.0
18.0	19.7 × 5.00	3.85	19.8 × 3.85	3.25	3.15	2.90	18.0
20.0	4.85	3.65	3.75	3.10	3.05	2.75	20.0
22.0	4.25	3.50	3.65	2.95	2.95	2.60	22.0
24.0	3.75	3.35	3.50	2.80	2.90	2.45	24.0
26.0	3.35	27.2 × 3.20	3.40	2.70	2.80	2.35	26.0
28.0	3.05	3.05	3.05	2.60	2.70	2.25	28.0
30.0	29.0 × 2.90	29.5 × 2.85	2.75	2.55	2.60	2.15	30.0
32.0			31.8 × 2.50	2.50	2.50	2.10	32.0
34.0				32.6 × 2.50	2.30	2.05	34.0




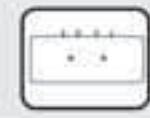
m	25.0						m
	9.15		12.20		15.25		
	10°	30°	10°	30°	10°	30°	
8.0	9.8 × 5.00						8.0
10.0	5.00		10.9 × 4.00				10.0
12.0	5.00	12.5 × 4.65	4.00		12.1 × 3.20		12.0
14.0	5.00	4.40	4.00	14.5 × 3.65	3.20		14.0
16.0	5.00	4.15	4.00	3.50	16.5 × 3.20	16.0 × 3.05	16.0
18.0	19.5 × 5.00	3.90	3.85	3.35	3.15	2.95	18.0
20.0	4.80	3.70	3.75	3.20	3.05	2.90	20.0
22.0	4.20	3.55	3.65	3.05	2.95	2.80	22.0
24.0	3.70	3.40	3.50	2.90	2.90	2.65	24.0
26.0	3.30	3.30	3.30	2.80	2.80	2.55	26.0
28.0	2.95	3.00	2.95	2.70	2.70	2.40	28.0
30.0	2.65	2.70	2.65	31.4 × 2.60	2.65	2.30	30.0
32.0	31.6 × 2.45	2.40	2.40	2.40	2.45	2.20	32.0
34.0			2.20	2.25	2.20	2.10	34.0

固定副臂工况载荷表

Load Chart (Fixed Jib)

m	28.0						m
	9.15		12.20		15.25		
	10°	30°	10°	30°	10°	30°	
8.0							8.0
10.0	10.4 × 5.00		11.6 × 4.00				10.0
12.0	5.00	13.1 × 4.65	4.00		12.7 × 3.20		12.0
14.0	5.00	4.50	4.00	15.1 × 3.85	3.20		14.0
16.0	5.00	4.25	4.00	3.60	16.8 × 3.20	17.2 × 3.05	16.0
18.0	19.2 × 5.00	4.05	3.85	3.45	3.15	3.00	18.0
20.0	4.70	3.85	3.75	3.30	3.05	2.85	20.0
22.0	4.10	3.70	3.65	3.15	2.95	2.75	22.0
24.0	3.80	24.8 × 3.50	3.50	3.00	2.90	2.60	24.0
26.0	3.20	3.25	3.20	2.85	2.80	2.50	26.0
28.0	2.85	2.90	2.85	2.75	2.70	2.40	28.0
30.0	2.55	2.60	2.55	2.65	2.60	2.30	30.0
32.0	2.30	2.30	2.30	2.40	2.35	2.20	32.0
34.0	2.05	2.10	2.10	2.15	2.10	2.15	34.0

m	31.0						m
	9.15		12.20		15.25		
	10°	30°	10°	30°	10°	30°	
8.0							8.0
10.0	11.0 × 5.00						10.0
12.0	5.00	13.7 × 4.65	12.2 × 4.00		13.3 × 3.20		12.0
14.0	5.00	4.60	4.00		3.20		14.0
16.0	5.00	4.35	4.00	3.65	16.8 × 3.20		16.0
18.0	19.0 × 5.00	4.15	3.85	3.50	3.15	3.05	18.0
20.0	4.65	3.95	3.75	3.35	3.05	2.95	20.0
22.0	4.00	23.6 × 3.70	3.65	3.20	2.95	2.80	22.0
24.0	3.50	3.60	3.50	3.10	2.90	2.65	24.0
26.0	3.10	3.20	3.15	2.95	2.80	2.55	26.0
28.0	2.75	2.85	2.85	2.85	2.75	2.45	28.0
30.0	2.45	2.55	2.50	2.60	2.50	2.35	30.0
32.0	2.20	2.25	2.25	2.30	2.25	2.25	32.0
34.0	1.95	2.00	2.00	2.10	2.05	2.15	34.0



主臂带副臂时主臂工况载荷表

Load Chart (Boom attached with jib)

m	22.0			25.0			m
	9.15	12.20	15.25	9.15	12.20	15.25	
5.0	5.15 × 29.2	5.15 × 29.0	5.15 × 28.9				5.0
5.5	26.32	26.17	26.02	5.7 × 25.42	5.7 × 25.27	5.7 × 25.12	5.5
6.0	23.42	23.27	23.12	23.12	22.97	22.82	6.0
7.0	18.32	18.17	18.02	18.12	17.97	17.82	7.0
8.0	14.92	14.77	14.62	14.22	14.07	13.92	8.0
9.0	12.52	12.37	12.22	12.42	12.27	12.12	9.0
10.0	10.82	10.67	10.52	10.62	10.47	10.32	10.0
12.0	8.32	8.17	8.02	8.17	8.02	7.87	12.0
14.0	6.82	6.47	6.32	6.52	6.37	6.22	14.0
16.0	5.42	5.27	5.12	5.32	5.17	5.02	16.0
18.0	4.52	4.37	4.22	4.42	4.27	4.12	18.0
20.0	3.72	3.57	3.42	3.62	3.47	3.32	20.0
22.0	—	—	—	3.12	2.97	2.82	22.0
24.0	—	—	—	22.7 × 2.92	22.7 × 2.77	22.7 × 2.62	24.0
26.0	—	—	—	—	—	—	26.0
28.0	—	—	—	—	—	—	28.0

主臂带副臂时主臂工况载荷表

Load Chart (Boom attached with jib)

m	34.0			37.0			m
	9.15	12.20	15.25	9.15	12.20	15.25	
8.0	14.30	14.15	14.00	14.30	14.15	14.00	8.0
9.0	12.10	11.95	11.80	12.00	11.85	11.70	9.0
10.0	10.40	10.25	10.25	10.40	10.25	10.25	10.0
12.0	7.80	7.65	7.50	7.80	7.65	7.50	12.0
14.0	6.20	6.05	5.90	6.20	6.05	5.90	14.0
16.0	5.00	4.85	4.70	5.00	4.85	4.70	16.0
18.0	4.10	3.95	3.80	4.10	3.95	3.80	18.0
20.0	3.40	3.25	3.10	3.40	3.25	3.10	20.0
22.0	2.80	2.65	2.50	2.80	2.65	2.50	22.0
24.0	2.30	2.15	2.00	2.30	2.15	2.00	24.0
26.0	1.90	1.75	1.60	1.85	1.70	1.55	26.0
28.0	1.60	1.45	1.30	1.50	1.35	1.20	28.0
30.0	1.30	1.15	1.00	1.25	1.10	0.95	30.0
32.0	30.5 × 1.27	30.5 × 1.12	30.5 × 0.97	0.92	—	—	32.0
34.0	—	—	—	—	—	—	34.0

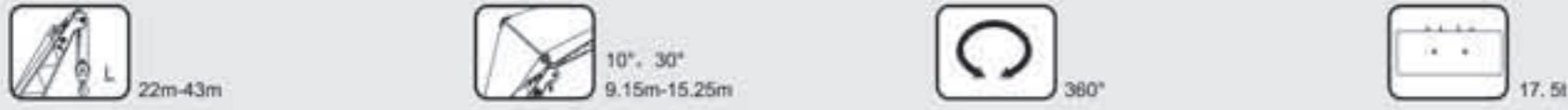
m	28.0			31.0			m
	9.15	12.20	15.25	9.15	12.20	15.25	
5.0							5.0
5.5							5.5
6.0	6.2 × 21.82	6.2 × 21.67	6.2 × 21.52				6.0
7.0	18.02	17.87	17.72	17.92	17.77	17.62	7.0
8.0	14.02	13.87	13.72	14.42	14.27	14.12	8.0
9.0	12.32	12.17	12.02	12.22	12.07	11.92	9.0
10.0	10.52	10.37	10.22	10.52	10.37	10.22	10.0
12.0	8.07	7.92	7.77	7.92	7.77	7.62	12.0
14.0	6.42	6.27	6.12	6.32	6.17	6.02	14.0
16.0	5.22	5.07	4.92	5.12	4.97	4.82	16.0
18.0	4.32	4.17	4.02	4.22	4.07	3.92	18.0
20.0	3.52	3.37	3.22	3.52	3.37	3.22	20.0
22.0	3.02	2.87	2.72	2.92	2.77	2.62	22.0
24.0	2.62	2.47	2.32	2.42	2.27	2.12	24.0
26.0	25.3 × 2.22	25.3 × 2.07	25.3 × 1.92	2.02	1.87	1.72	26.0
28.0	—	—	—	27.9 × 1.57	27.9 × 1.42	27.9 × 1.27	28.0

m	40.0			43.0			m
	9.15	12.20	15.25	9.15	12.20	15.25	
8.0							8.0
9.0	11.92	11.77	11.62	11.52	11.37	11.22	9.0
10.0	10.32	10.17	10.02	9.02	8.87	8.72	10.0
12.0	7.77	7.62	7.47	7.42	7.27	7.12	12.0
14.0	6.12	5.97	5.82	5.72	5.57	5.42	14.0
16.0	4.92	4.77	4.62	4.52	4.37	4.22	16.0
18.0	4.02	3.87	3.72	3.62	3.47	3.32	18.0
20.0	3.32	3.17	3.02	2.92	2.77	2.62	20.0
22.0	2.72	2.57	2.42	2.32	2.17	2.02	22.0
24.0	2.22	2.07	1.92	1.82	1.67	1.52	24.0
26.0	1.77	1.62	1.47	1.42	1.27	1.12	26.0
28.0	1.42	1.27	1.12	1.02	0.87	—	28.0
30.0	1.17	1.02	0.87	—	—	—	30.0
32.0	0.87	—	—	—	—	—	32.0
34.0	—	—	—	—	—	—	34.0

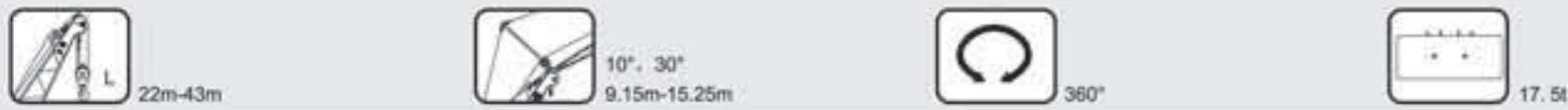


固定副臂工况载荷表

Load Chart (Fixed Jib)



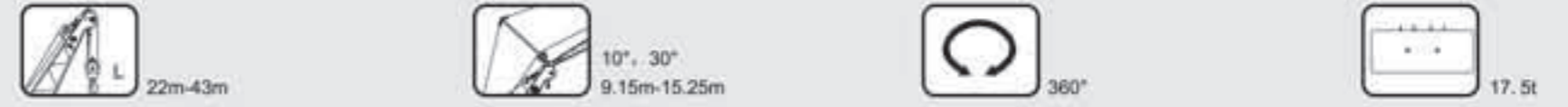
m	34.0						m
	9.15		12.20		15.25		
	10°	30°	10°	30°	10°	30°	
8.0							8.0
10.0	11.7 × 5.00						10.0
12.0	5.00		12.8 × 4.00		13.9 × 3.20		12.0
14.0	5.00	14.4 × 4.60	4.00		3.20		14.0
16.0	5.00	4.45	4.00	16.4 × 3.65	16.8 × 3.20		16.0
18.0	18.8 × 5.00	4.25	3.85	3.55	3.15	18.4 × 3.05	18.0
20.0	4.55	4.05	3.75	3.40	3.05	2.90	20.0
22.0	3.95	23.0 × 3.80	3.65	3.30	2.95	2.80	22.0
24.0	3.45	3.55	3.50	3.10	2.90	2.70	24.0
26.0	3.05	3.15	3.05	27.7 × 2.90	2.80	2.60	26.0
28.0	2.70	2.80	2.70	2.85	2.75	2.50	28.0
30.0	2.40	2.45	2.40	2.55	2.45	2.45	30.0
32.0	2.10	2.20	2.15	2.25	2.20	2.30	32.0
34.0	1.85	1.95	1.90	2.00	1.95	2.05	34.0



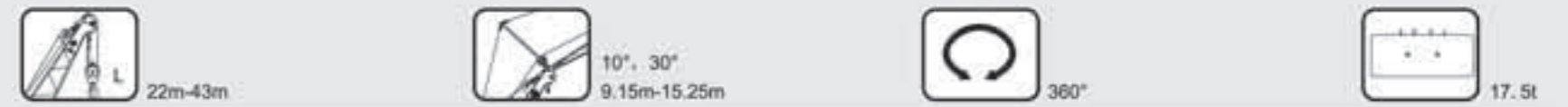
m	37.0						m
	9.15		12.20		15.25		
	10°	30°	10°	30°	10°	30°	
8.0							8.0
10.0							10.0
12.0	12.3 × 5.00		13.4 × 4.00				12.0
14.0	5.00	15.0 × 4.60	4.00		14.6 × 3.20		14.0
16.0	5.00	4.50	4.00	17.0 × 3.65	16.8 × 3.20		16.0
18.0	18.6 × 5.00	4.30	3.85	3.60	3.15	19.1 × 3.05	18.0
20.0	4.45	4.15	3.75	3.45	3.05	2.95	20.0
22.0	3.85	4.00	3.65	3.30	2.95	2.85	22.0
24.0	3.35	3.50	3.40	3.20	2.90	2.75	24.0
26.0	2.95	3.10	3.00	26.6 × 3.05	2.80	2.65	26.0
28.0	2.60	2.70	2.60	2.80	2.65	2.60	28.0
30.0	2.30	2.40	2.30	2.45	2.35	2.50	30.0
32.0	2.00	2.10	2.05	2.20	2.10	2.25	32.0
34.0	1.75	1.85	1.80	1.90	1.85	2.00	34.0

固定副臂工况载荷表

Load Chart (Fixed Jib)



m	40.0						m
	9.15		12.20		15.25		
	10°	30°	10°	30°	10°	30°	
8.0							8.0
10.0							10.0
12.0	12.9 × 5.00						12.0
14.0	5.00	15.6 × 4.60	4.00	14.8 × 4.00	15.2 × 3.20		14.0
16.0	5.00	4.55	4.00		16.8 × 3.20		16.0
18.0	18.4 × 5.00	4.35	3.85	3.65	3.15	19.7 × 3.05	18.0
20.0	4.30	21.6 × 4.10	3.75	3.50	3.05	3.00	20.0
22.0	3.75	3.95	3.65	3.40	2.95	2.90	22.0
24.0	3.25	3.45	3.30	25.1 × 3.20	2.90	2.80	24.0
26.0	2.85	3.00	2.90	3.10	2.80	2.70	26.0
28.0	2.45	2.60	2.55	2.70	2.60	2.60	28.0
30.0	2.15	2.30	2.20	2.40	2.25	2.45	30.0
32.0	1.85	2.00	1.90	2.10	1.95	2.20	32.0
34.0	1.60	1.70	1.65	1.80	1.70	1.90	34.0

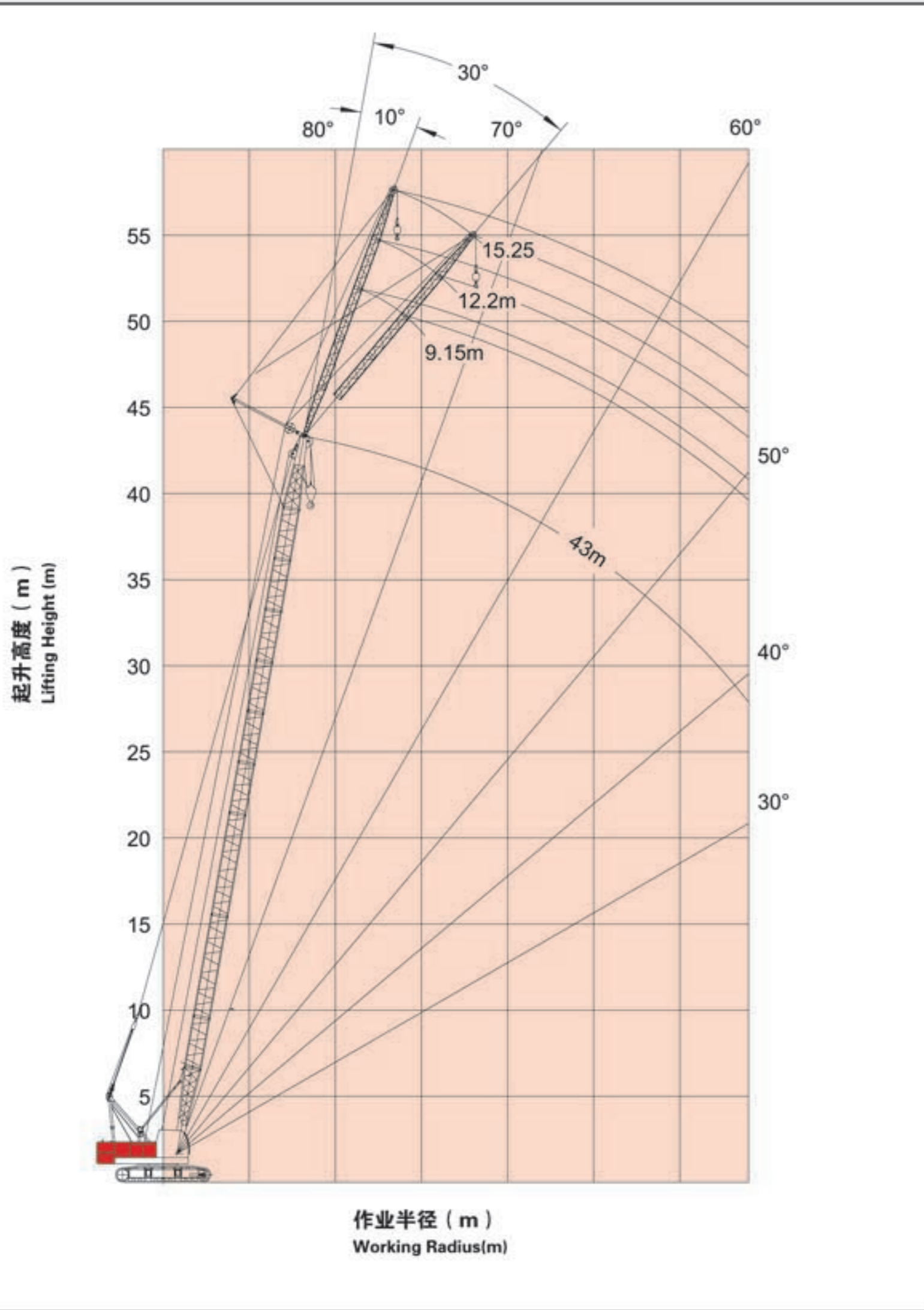


m	43.0						m
	9.15		12.20		15.25		
	10°	30°	10°	30°	10°	30°	
8.0							8.0
10.0							10.0
12.0	13.5 × 5.00						12.0
14.0	5.00		14.7 × 4.00		15.8 × 3.20		14.0
16.0	5.00	16.2 × 4.60	4.00		16.8 × 3.20		16.0
18.0	18.3 × 5.00	4.45	3.85	3.60	3.12		18.0
20.0	4.30	21.2 × 4.20	3.75	3.60	3.05	20.3 × 3.05	20.0
22.0	3.70	3.95	3.65	3.45	2.95	2.95	22.0
24.0	3.20	3.40	3.20	24.8 × 3.30	2.90	2.85	24.0
26.0	2.80	2.95	2.80	3.00	2.80	2.75	26.0
28.0	2.40	2.55	2.45	2.65	2.50	2.70	28.0
30.0	2.10	2.25	2.10	2.30	2.15	2.40	30.0
32.0	1.80	1.95	1.80	2.00	1.85	1.90	32.0
34.0	1.55	1.65	1.55	1.70	1.60	1.10	34.0



固定副臂工况作业范围

Working range (Fixed jib)



载荷表说明

Notes for Load Chart

说明

- (1) 本起重机符合GB3811标准, 同时又满足ISO4302、ISO4305标准。
- (2) 载荷表所表示的额定总载荷值为水平坚硬地面上, 理想作业条件的最大允许值。
- (3) 载荷表所示的值以吨为单位, 并基于倾翻力矩75%以内的值。
- (4) 载荷表所示的值基于平衡负载而计算, 不包括如突然停止的冲击负载, 地表状况, 风力负载及操作速度等影响。如在此条件下, 驾驶员必须进行减载作业。同时, 载荷表中的值还要扣除如吊钩, 吊具等的自重。
吊钩自重: 50吨钩……0.570吨, 35吨钩……0.37吨, 15吨钩……0.295吨, 6吨钩……0.181吨。
- (5) 在安装副臂或辅助臂时, 起重机的实际起重量是将表的值扣出下表所列中主钩+副钩的质量以及吊具的质量, 但扣除后起重量不足0.8吨时不能工作。

Notes

- (1) Ratings according to GB3811, ISO4302 and ISO4305.
- (2) The rated load in the table is the maximum allowed value when the crane works on the level and firm ground and under the ideal conditions.
- (3) The unit in the table is ton and the rated load capacity is 75% of tipping load.
- (4) The rated load is calculated based on stable load, not including impacting load, the conditions of ground and operating speed, so the driver should reduce corresponding load. Weight of hook and slings should be deducted from the rated capacity.
Weight of hook: 50t hook……0.570t, 35t hook……0.37t, 15t hook……0.295t, 6t hook……0.181t
- (5) When mounted with jib or runner, the actual lifting capacity is the rated load capacity deducting the weights of main and auxiliary hooks, fixed jib or runner. The crane can not work if the capacity deducted is less than 0.8t.

固定副臂和加长臂

Fixed jib and Runner

副臂长度 Jib Length	m	9.15	12.2	15.25	辅助臂 Runner
扣除质量 Weight	t	0.85	1.00	1.15	0.2

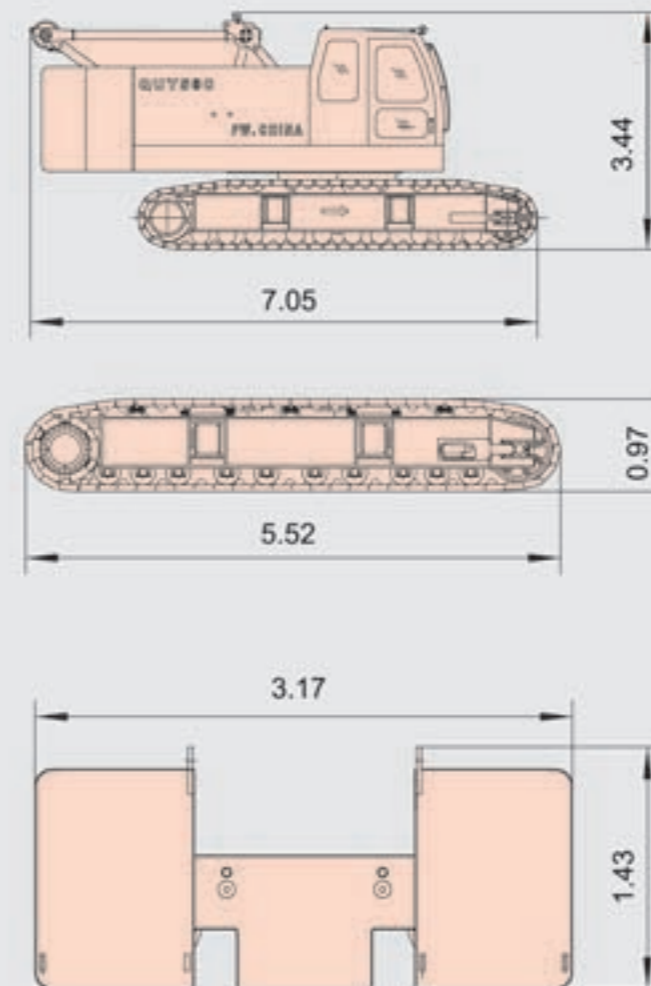
- (6) 安装副臂时的主臂长度为22~43米。
- (7) 起重机在吊重时履带架必须是扩张状态。
- (8) 平衡重质量为17.5t。
- (9) 作业半径是吊重以后的实际作业半径。
- (10) 侧面时的稳定值最小。

- (6) When mounted with jib, length of main boom length is 22 ~ 43m.
- (7) Track frames must be fully extended before the crane starts to work.
- (8) The weight of counterweight is 17.5t.
- (9) The working radius is the actual radius after lifting the load.
- (10) Stability is weak at side.

主要零部件运输尺寸

Dimensions for Transportation

尺寸单位: m Unit: m



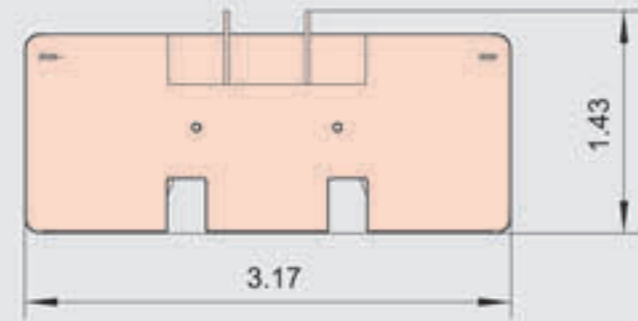
本体(不含配重)	× 1	Carbody(not including counterweight)	× 1
长	7.05m	Length	7.05m
宽	3.25m	Width	3.25m
高	3.44m	Height	3.44m
重量	31000kg	Weight	31000kg
履带总成	× 2	Crawler assy	× 2
长	5.52m	Length	5.52m
宽	0.98m	Width	0.98m
高	0.97m	Height	0.97m
重量	5611kg	Weight	5611kg
前配重	× 1	Front counterweight	× 1
长	3.17m	Length	3.17m
宽	0.67m	Width	0.67m
高	1.43m	Height	1.43m
重量	7700kg	Weight	7700kg



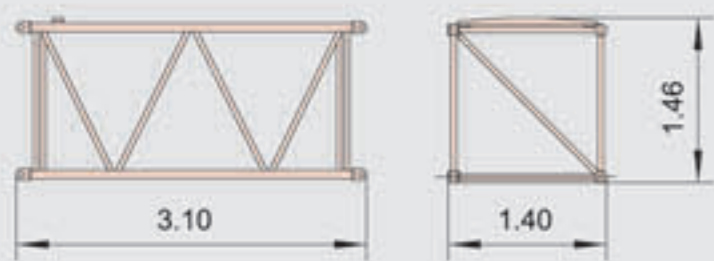
主要零部件运输尺寸

Dimensions for Transportation

尺寸单位: m Unit: m



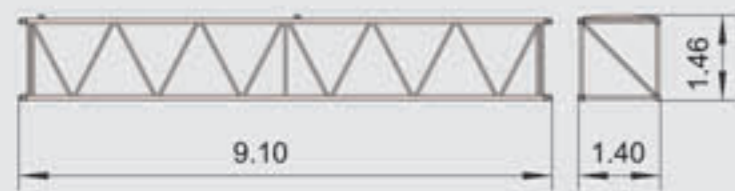
后配重	× 1	Rear counterweight	× 1
长	3.17m	Length	3.17m
宽	0.66m	Width	0.66m
高	1.43m	Height	1.43m
重量	9800kg	Weight	9800kg



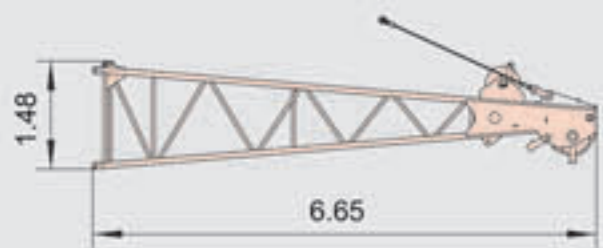
3m中间臂节	× 1	3m boom insert	× 1
长	3.10m	Length	3.10m
宽	1.4m	Width	1.4m
高	1.46m	Height	1.46m
重量	300.3kg	Weight	300.3kg



6m中间臂节	× 3	6m boom insert	× 3
长	6.10m	Length	6.10m
宽	1.40m	Width	1.40m
高	1.46m	Height	1.46m
重量	537.5kg	Weight	537.5kg



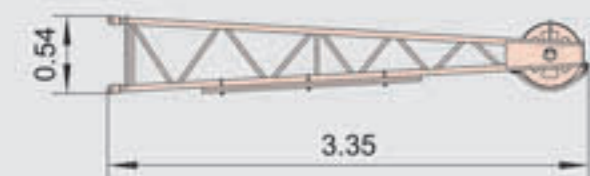
9m中间臂节	× 2	9m boom insert	× 2
长	9.10m	Length	9.10m
宽	1.40m	Width	1.40m
高	1.46m	Height	1.46m
重量	845kg	Weight	845kg



顶部臂节	× 1	Boom top	× 1
长	6.65m	Length	6.65m
宽	1.40m	Width	1.40m
高	1.48m	Height	1.48m
重量	1045kg	Weight	1045kg



基础臂节	× 1	Boom foot	× 1
长	6.65m	Length	6.65m
宽	1.40m	Width	1.40m
高	1.65m	Height	1.65m
重量	1128kg	Weight	1128kg



副臂顶部臂节	× 1	Fixed jib top	× 1
长	3.35m	Length	3.35m
宽	0.70m	Width	0.70m
高	0.54m	Height	0.54m
重量	156.4kg	Weight	156.4kg

主要零部件运输尺寸

Dimensions for Transportation

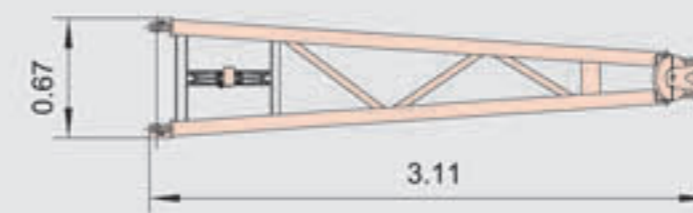
尺寸单位: m Unit: m



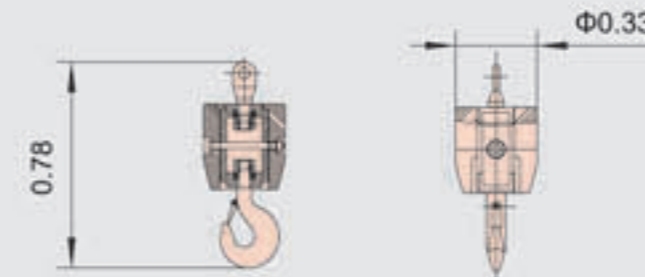
副臂基础臂节	× 1	Fixed jib foot	× 1
长	3.24m	Length	3.24m
宽	0.61m	Width	0.61m
高	0.55m	Height	0.55m
重量	125kg	Weight	125kg



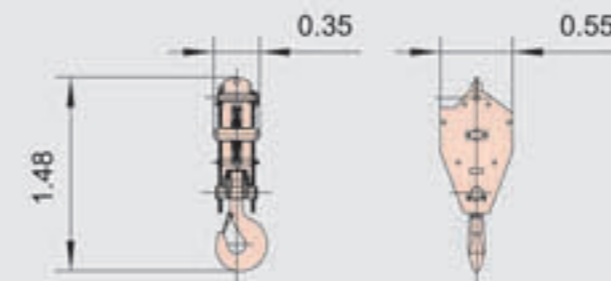
3m中间臂节	× 3	3m boom insert	× 3
长	3.11m	Length	3.11m
宽	0.61m	Width	0.61m
高	0.54m	Height	0.54m
重量	78kg	Weight	78kg



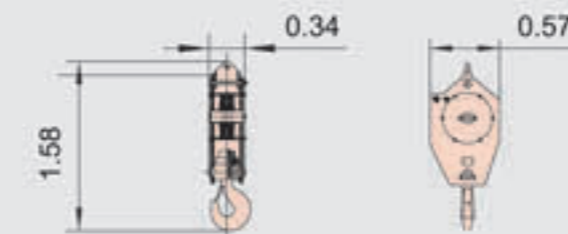
副臂撑架	× 1	Jib mast	× 1
长	3.11m	Length	3.11m
宽	0.68m	Width	0.68m
高	0.67m	Height	0.67m
重量	147.6kg	Weight	147.6kg



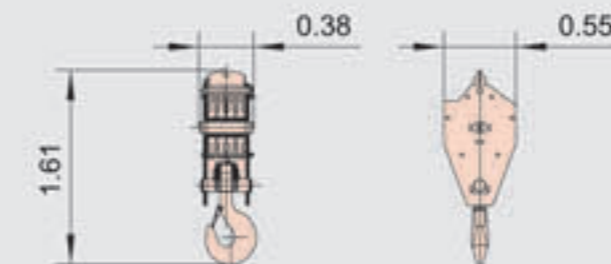
6吨吊钩	× 1	6T Hook block	× 1
长	0.78m	Length	0.78m
宽	0.33m	Width	0.33m
高	0.33m	Height	0.33m
重量	181kg	Weight	181kg



15吨吊钩	× 1	15T Hook block	× 1
长	1.48m	Length	1.48m
宽	0.55m	Width	0.55m
高	0.35m	Height	0.35m
重量	295kg	Weight	295kg



35吨吊钩	× 1	35T Hook block	× 1
长	1.58m	Length	1.58m
宽	0.57m	Width	0.57m
高	0.34m	Height	0.34m
重量	370kg	Weight	370kg



50吨吊钩	× 1	50T Hook block	× 1
长	1.61m	Length	1.61m
宽	0.55m	Width	0.55m
高	0.38m	Height	0.38m
重量	480kg	Weight	480kg