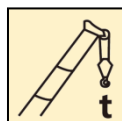


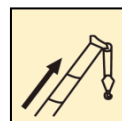
XCA160_H 全地面起重机 / All Terrain Crane

技术规格书

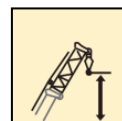
Technical specifications



160 t



78 m



103.1 m



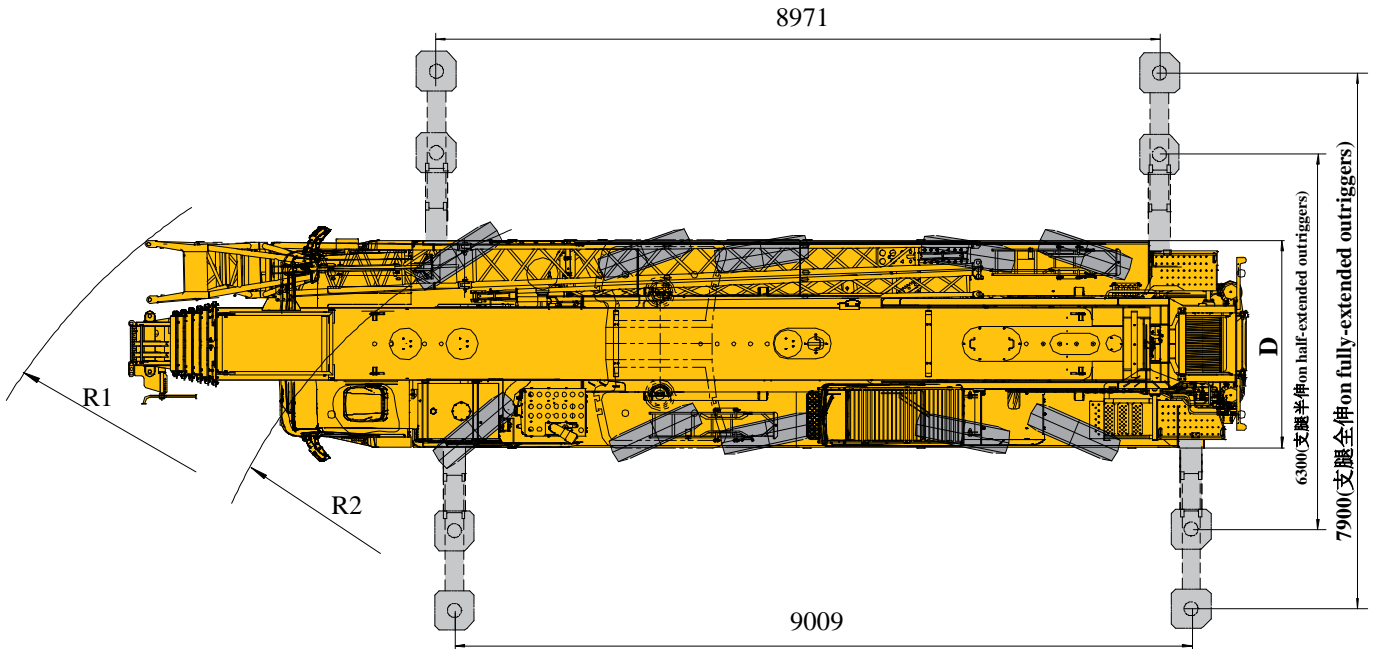
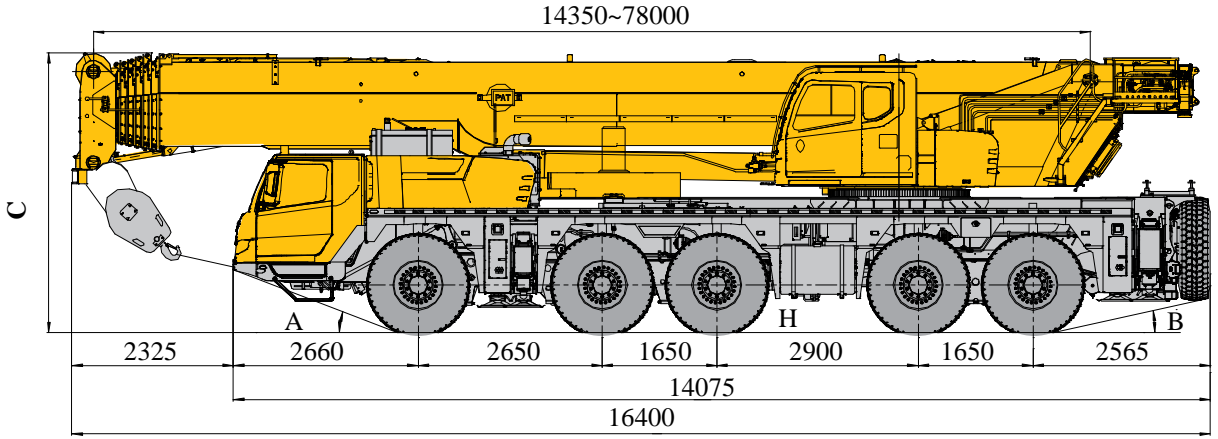
2023年5月 第三版

目录

Contents

尺寸参数 Dimensions	3
技术规格 Technical specifications	4-7
车型与选装件 Version and Optional Equipment	8
重量 Weight	9
作业速度 Working speeds	10
平衡重 Counterweight	11
运输部件尺寸 Dimension and weight of parts transported	12-13
臂架组合方案 Boom / Jib combinations	14-15
主臂 Boom	16-19
副臂 Jib	20-25
符号标识 Description of symbols	26
主要技术参数表 Table of main technical parameters	27-28
注意事项 Notes	29

尺寸参数 Dimensions



	A	B	C	D	R1	R2	H
445/95 R 25	20°	12°	4040	3000	13700	9750	352

技术规格

Technical specifications



底盘

车架 徐工设计、制造，全覆盖式走台板，防扭转箱型结构，高强度钢材制造。

支腿 4支腿，H形布置，采用双级水平支腿，水平伸缩和垂直伸缩由液压控制，底盘两侧装有电控操纵控制台，控制台板装有水平仪、照明灯和调速按钮，支腿油缸均设有单向阀，且垂直支腿带有双向液压锁。

发动机 WP12.460E62，直列六缸水冷电控柴油发动机，潍柴制造，最大净功率333kW/1900rpm，最大基准扭矩2185Nm/950-1400rpm。欧六排放标准。燃油箱容积：460L

液压系统 泵组直接连接在发动机的取力口上，用于支腿、转向、悬挂和独立液压散热。

变速箱 德国ZF自动变速箱，12个前进档，2个倒档，带缓速制动。

分动箱 机械式分动箱，装有应急转向油泵。

车桥 高强度车桥，配备气控盘式制动器，2、3、4、5桥驱动。

悬挂 所有车桥均采用油气悬挂系统，减震效果好，具有自动调平、悬架升降、弹性刚性转换等功能。



底盘

轮胎 10个轮胎，1个备胎，每桥均装单胎，双钱制造，承载力大。轮胎规格：445/95R25

制动 行车制动：双回路气压制动，作用于所有车轮。
驻车制动：弹簧储能制动，作用于2-5轴车轮。
辅助制动：发动机缸内制动，变速箱缓速制动，安全可靠，延长制动摩擦片使用寿命。


转向 全桥转向，采用先进的电液比例转向控制技术，可适应多种工况的要求，实现多种转向模式。


驾驶室 新型钢结构豪华全宽驾驶室，采用悬浮式连接结构，后部装有减震器。配备电动升降器的安全玻璃、可调式座椅、电动调节后视镜、可调节高度及角度方向盘，倒车显示器、大屏幕彩色液晶显示器和CD音响等。新型组合式中控台布局安全合理，采用圆弧造型，体现人性化的设计。标配冷暖空调。

电气系统 直流24伏特，2个电池串联。

技术规格


Technical specifications


	上车
结构	徐工设计、制造，高强度钢材制造。
液压系统	电比例变量泵用于起升、变幅、伸缩；回转采用闭式泵驱动；比例电磁换向控制阀；风冷式液压油散热器；
操纵方式	先导电比例操纵，无级调速，由左右2个操纵手柄控制起重机的主要动作。
主起升机构	液压控制调速，由液压马达通过行星齿轮减速器驱动，内置常闭式制动器并带有平衡阀，装有绳槽卷筒。
副起升机构	液压控制调速，由液压马达通过行星齿轮减速器驱动，内置常闭式制动器并带有平衡阀，装有绳槽卷筒。
回转机构	单排四点接触球外齿式回转支承，由液压马达通过行星齿轮减速器驱动，内置常闭式制动器，可连续回转360°，具有动力控制或自由滑转的功能，可无级调速。
变幅机构	单变幅油缸，带有负载补偿功能的变幅平衡阀，变幅下落采用平衡阀外控式重力+动力下降方式。
操纵室	钢制操纵室，无视野死角的前景窗，安全玻璃，推拉式车门，可调式电加热功能座椅，可翻仰20°，装有前窗顶窗遮阳帘、顶窗双层遮阳帘，后窗遮阳帘；雨刮器、顶部防护栏、推拉踏板，配备力矩限制器、人机交互系统控制面板、电控扶手箱、发动机动力加速踏板、发动机起动开关等。标配冷暖空调、2kg灭火器。
安全装置	液压平衡阀；液压溢流阀；液压双向锁；力矩限制器；三圈保护器；起升高度限位器；风速仪；卷扬监视装置
组合配重	总重56t，有0t、12t、24t、36t、56t共5种组合方式。
起重钩	75t钩 8t钩

	上车
主臂	7节，“U”形截面的筒形焊接结构，单板式臂头、紧凑式臂尾。单缸插销伸缩机构 主臂长度：14.4m~78m。
副臂	由连接架、旋转架和两节桁架结构折叠式副臂组成，具有0°、15°、30°三种安装角，收存于主臂旁。 副臂长度：11m、18.5m
臂端单滑轮	单滑轮，安装在主臂顶端，用于单股钢丝绳起重作业，起重性能与主臂相同，但最大起重量不超过8t。
主臂加长节	两节桁架式焊接结构，与主臂臂头固定安装， 主臂加长节长度：8m
独立臂头	桁架式焊接结构，与主臂臂头固定安装。 独立臂头长度：2.9m

技术规格


Technical specifications


 Chassis	
Frame	Designed and manufactured by XCMG, it is made of high strength steel with fully covered walking surface and anti-torsion box-typed structure.
Outrigger	Four outriggers arranged in H-shape are hydraulically controlled by control levers. Double-stage outrigger beam is adopted. There is an outrigger control station located at each side of the chassis, and there is a level gauge, an illuminator and two speed buttons on each control station. There is a check valve fitted in each outrigger cylinder, and a double-way hydraulic valve fitted in each jack cylinder.
Engine	WP12.460E62, in-line, 6-cylinder, water cooled, electric control diesel engine, made by Weichai, with maximum net power of 333kW/1900rpm and max. torque of 2185Nm/950-1400rpm, compliant with Euro VI emission standard. Fuel tank capacity: 460L.
Hydraulic system	The pump unit directly connected to the PTO port of the engine is used for outriggers, steering, suspension and independent cooling for hydraulic system.
Transmission	ZF Germany automatic transmission, equipped with a retarder, 12 forward gears and 2 reverse gears.
Transfer box	Mechanical transfer box equipped with an emergency steering oil pump.
Axles	High-strength axle, equipped with pneumatically controlled disc brake. 2nd axle, 3rd axle, 4th axle and 5th axle are for driving.
Suspension	Hydro-pneumatic suspension is adopted for all axles, providing good shock absorbing effect. Functions of automatic leveling, suspension lifting, elastic/rigid state switch-over, etc. are available.

 Chassis	
Tires	10 tires and 1 spare tire, each axle is equipped with single tire, manufactured by Double coin, large bearing capacity. Tire specifications:445/95R25
Brakes	Service brake: double-circuit air pressure brake, acting on all wheels. Parking brake: spring-loaded brake, acting on the wheels of 2-5 axles. Auxiliary brakes: engine in-cylinder brake and transmission retarder brake, which are safe and reliable, and will prolong the service life of brake lining.
Steering	All axles steering, with advanced electro-hydraulic proportional steering control technology applied to ensure various steering modes for meeting the requirements under various working conditions.
Driver's cab	New full dimension steel structure cab, with suspension connecting structure adopted, is equipped with shock absorbers at the rear of the cab. Safety glass, electrically operated door window lifters, adjustable seats, electrical adjustable mirrors, steering wheel adjustable in height and angle, reversing display and large screen liquid crystal display & CD player are equipped. New combined central control panel is reasonably arranged with arc shape adopted, presenting human-oriented design concept. Heating & air-conditioning are standard.
Electrical System	24 V DC, two batteries in series.

技术规格

Technical specifications

 Superstructure	
Frame	Designed and manufactured by XCMG, made of high strength steel.
Hydraulic system	Electric proportional variable pump is used for lifting, luffing and telescoping operations. A closed pump is used to drive slewing operation. The proportional solenoid steering control valve and air-cooled hydraulic oil radiator are equipped.
Operating mode	The electric-proportional pilot operation system is equipped with two levers at left and right sides controlling the main movements of the crane, and stepless slewing speed regulation is available.
Main winch system	Hydraulic control is used for speed regulation. The system is driven by a hydraulic motor through a planetary gear reducer, with a normally closed brake, a balanced valve and a grooved drum equipped.
Auxiliary winch system	Hydraulic control is used for speed regulation. The system is driven by a hydraulic motor through a planetary gear reducer, with a normally closed brake, a balanced valve and a grooved drum equipped.
Slewing system	A single-row, four-point contact-ball external slewing bearing; the system is driven by a hydraulic motor through a planetary gear reducer with constant-closed brake equipped, and may continuously slew 360° . Power control and free slewing function as well as stepless speed regulation are available.
Luffing system	Single luffing cylinder and the luffing counterbalance valve with the load compensation function. Balance valve-controlled boom gravity combined with power for lowering boom is used for boom luffing down.
Operator's cab	Steel cab with a full-view windshield, safety glass, sliding door, adjustable seat with electric heating function; it can tilt backward about 20° ; double-layer sun shield is adopted for roof window; sun shield is also equipped at the windshield and rear window; wipers, roof guardrails, pull-out step, LMI, human-machine interactive control panel, electric controlled armrest, engine accelerator pedal, engine start switch, etc. are also available. Heater, air conditioner and fire extinguisher of 2 kg are standard.

 Superstructure	
Safety devices	Hydraulic counterbalance valve; hydraulic relief valve; hydraulic double-way valve; LMI; lowering limiter; anti-two block; anemometer; winch monitor
Combined counterweight	Total weight is 56t. 5 counterweight combinations of 0 t, 12 t, 24 t, 36 t and 56 t are available.
Hook block	75t , 8t
Boom	7-section boom with U-shaped cross-section, welded structure with single-plate boom head and compact boom tail. Single-cylinder pinning telescoping system, Boom length: 14.4 m~78 m.
Jib	The jib consists of a connecting bracket, a rotating bracket and two lattice sections. Three offset angles of 0° , 15° and 30° are available. It is stowed along the side of the boom. Jib length: 11 m,18.5 m
Single top	Installed at the boom top, used for single line operation. Its lifting performance is the same as that for boom, but the max. lifting load could not exceed 8 t.
Boom extension	Two-section lattice jib, welded structure, attached to boom head. Length of boom extension: 8 m
Independent jib head	Lattice jib, welded structure, attached to boom head . Length of independent jib head is 2.9 m

车型与选装件

Version and Optional Equipment

车型 Version	功能描述/Function description	选择 Selection
标准型 Standard	七节主臂78m, 固定副臂18.5m 7-section boom of 78 m, fixed jib of 18.5 m	

注释：该产品仅标准型一种车型。

Note: this product only has standard version.

可选装件 Optional equipment		选择 Selection
吊钩 Hook block	130吨钩 130 t	
主臂加长节 Boom extension	主臂加长节 600kg Boom extension 600kg	
独立臂头 Independent jib head	独立臂头 475kg Independent jib head 475kg	
副起升机构 Auxiliary winch system	液压控制调速，由液压马达通过行星齿轮减速器驱动，内置常闭式制动器并带有平衡阀，装有绳槽卷筒。 Hydraulic control is used for speed regulation. The system is driven by a hydraulic motor through a planetary gear reducer, with a normally closed brake, a balanced valve and a grooved drum equipped.	

重量 Weight



车桥 Axle	1	2	3	4	5	总重量 Total weight
t	16.8	17.6	17.6	10.8	10.6	73.4

上车携带75吨钩、副臂、12t平衡重，不带其余吊钩、副卷及副卷钢丝绳；底盘携带备胎及备胎支架、配重支架、前后活动支腿；驱动转向形式：10×8×10；轮胎规格：445/95R 25
 75 t hook block, jib, and 12 t counterweight can be carried on the superstructure; other hook blocks, auxiliary winch and its wire rope are excluded.
 Spare tire and its bracket, counterweight bracket, front and rear outrigger beams can be carried on the chassis.
 Drive/steering type: 10×8×10; Tire specification: 445/95R 25.



吊钩 Hook	倍率 Parts of line	吊钩重量 Weight (kg)	吊钩尺寸 Dimensions (mm)	备注 Remarks
130t	12	1017	1785×730×560	双钩 Double hook, 选配 optional
75t	7	640	1500×590×324	双钩 Double hook, 标配 Standard
8t	1	370	475×475×782	单钩 Single hook, 标配 Standard

作业速度

Working speeds



445/95 R 25



1~20



40%

上车携带75吨钩、副臂、12t平衡重，不带其余吊钩、副卷及副卷钢丝绳；底盘携带备胎及备胎支架、配重支架、前后活动支腿；驱动转向形式：10×8×10；轮胎规格：445/95R 25
 75 t hook block, jib, and 12 t counterweight can be carried on the superstructure; other hook blocks, auxiliary winch and its wire rope are excluded.
 Spare tire and its bracket, counterweight bracket, front and rear outrigger beams can be carried on the chassis.
 Drive/steering type: 10×8×10; Tire specification: 445/95R 25.



作业机构
Drive

作业速度
Working speed

最大单绳拉力
Max. single line pull

钢丝绳直径/长度
Rope diameter/ length



0-135
m/min, 单绳, 第四层
m/min, single line, 4th layer

104kN

22 mm/300 m



0-90
m/min, 单绳, 第四层
m/min, single line, 4th layer

89kN

22 mm/240 m



0-1.5 r/min

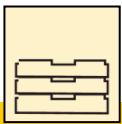
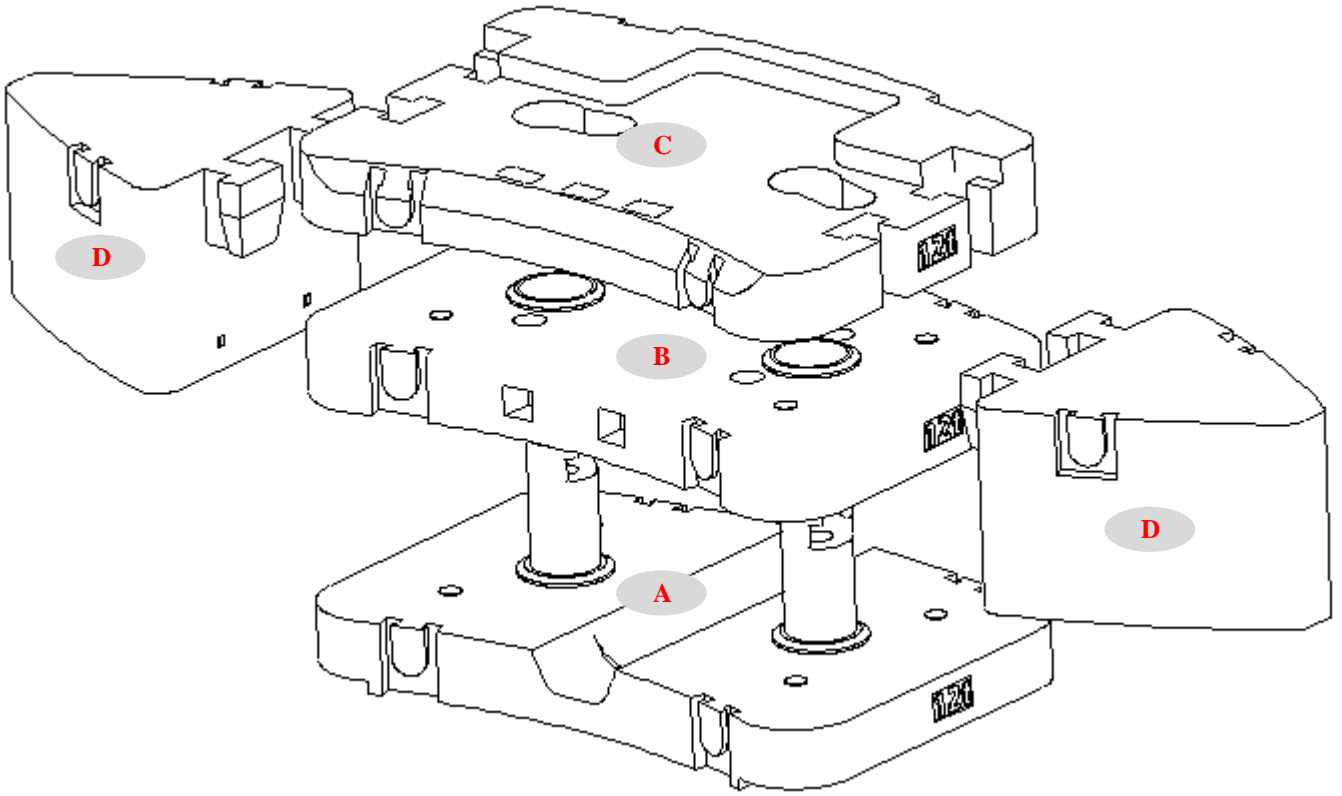


从-1°抬起至81°约60s
Approx. 60s for boom luffing up from -1° to 81°



从14.4m伸出至78m约760s
Approx. 750s for boom extension from 14.4m to 78m

平衡重 Counterweight



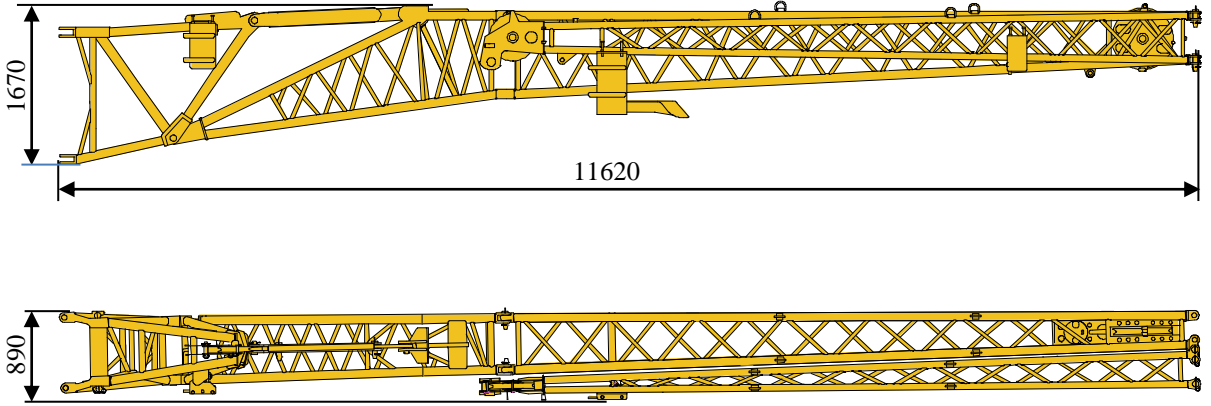
平衡重 Counterweight	A	B	C	D
尺寸 (长×宽×高) mm Size (L×W×H) (mm)	2995×2041×1030	2995×2041×324	2995×2041×436	1710×1540×977
重量 t Weight (t)	12	12	12	10

工况模式 Working mode	56t	36t	24t	12t	0t
组合形式 Combinations	A+B+C+2×D	A+B+C	A+B	A	0

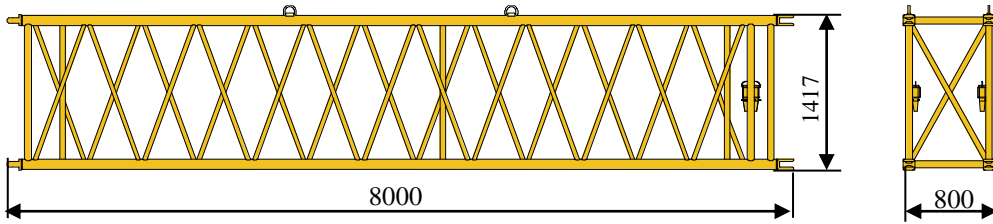
运输部件尺寸

Dimension and weight of parts transported

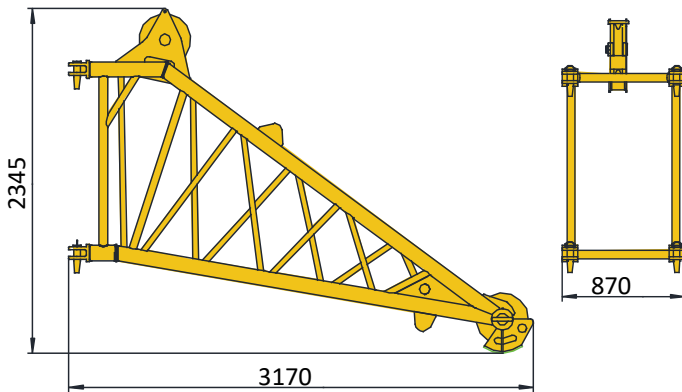
副臂及支架 1750kg
Jib and the bracket 1750kg



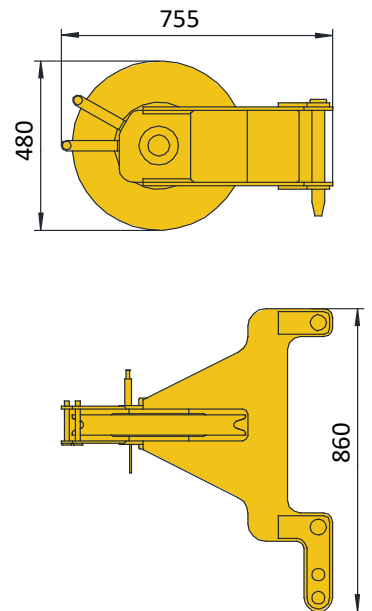
主臂加长节 600kg
Boom extension 600kg



独立臂头 475kg
Independent jib head 475kg

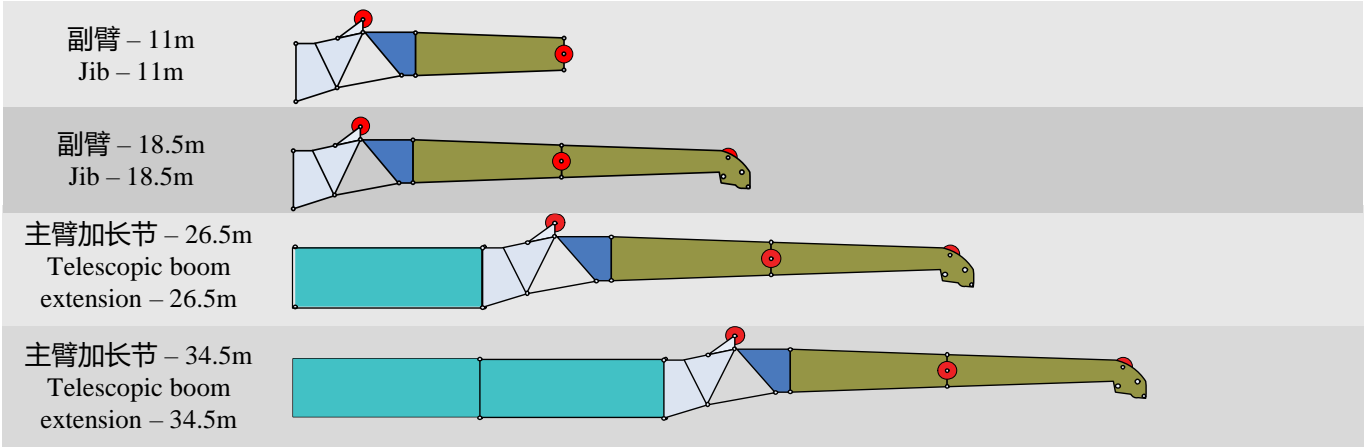


臂端单滑轮 83kg
Single top 83kg



臂架组合方案

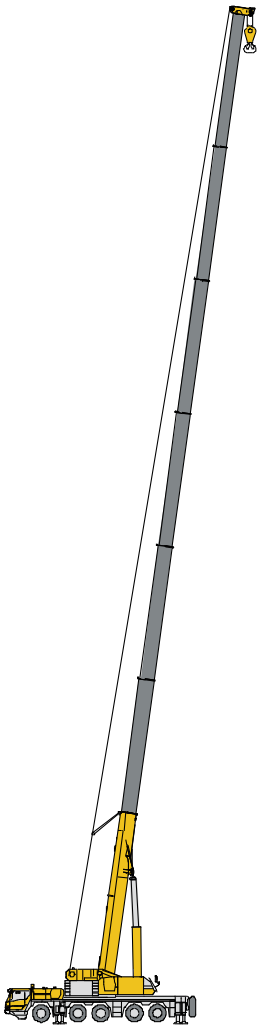
Boom / Jib combinations



部件 Component	结构形式 Structure	尺寸 (长×宽×高) mm Size (L×W×H) (mm)	重量 kg Weight (kg)
连接架 Connection bracket		2100×800×1820	353
旋转架 Rotating bracket		3050×700×1260	311
主臂加长节 Telescopic boom extension		8000×800×1310	600
一节副臂总成 First jib section assembly		7380×550×750	477
二节副臂总成 Second jib section assembly		7000×410×410	320

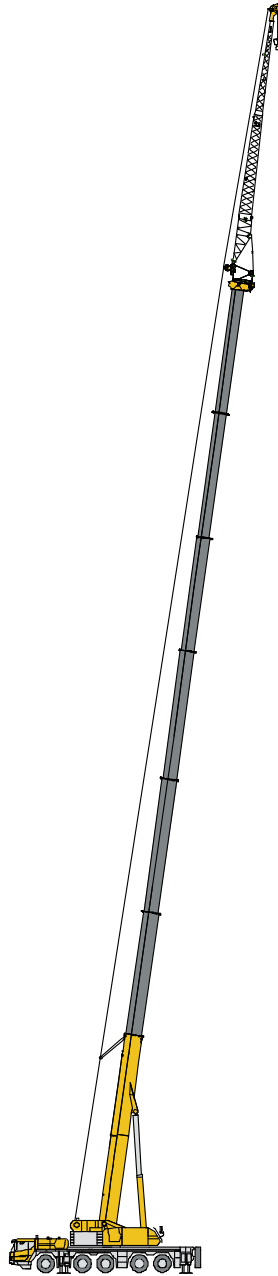
臂架组合方案

Boom / Jib combinations



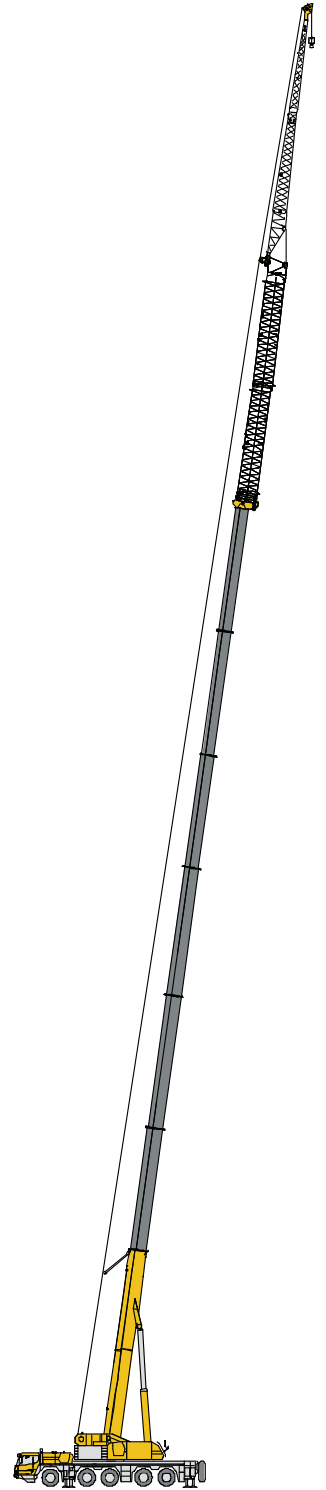
主臂
Telescopic boom

T: 14.4~78m



副臂
Jib

T: 63.1~72.9m
J: 11~18.5 m

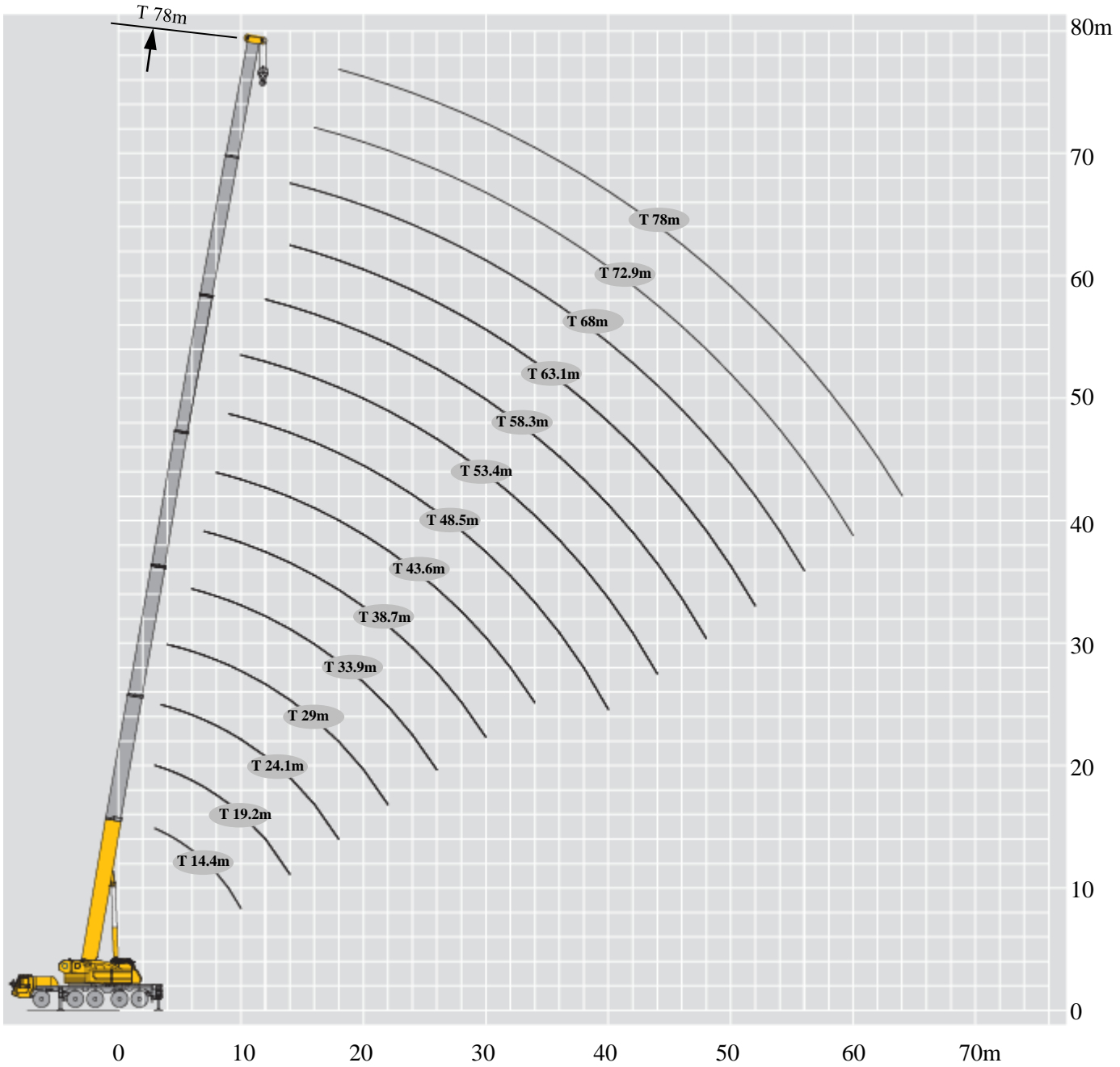


主臂加长节
Telescopic boom extension

T: 63.1~72.9m
I: 8m/16m
J: 11~18.5m

起升高度曲线图 Lifting heights


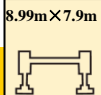
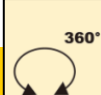


主臂
Boom



起重性能表

Lifting capacities

T 14.4~33.9m

															
	14.4	19.2	19.2	19.2	24.1	24.1	24.1	29	29	29	33.9	33.9	33.9		
2.5	160*													2.5	
3	130	65.3	110.0	110.0										3	
3.5	115	61.9	100.0	100.0	66.7	95.0	95.0							3.5	
4	105	58.8	97.5	97.5	63.4	93.0	93.0							4	
4.5	100	56.2	95.0	95.0	61.0	88.0	86.0	63.7	78.0	78.0				4.5	
5	92	53.8	90.0	90.0	58.6	82.0	80.0	61.5	78.0	78.0				5	
6	82	49.3	82.0	81.0	54.3	75.0	73.0	57.8	75.0	73.0	59.8	68.0	68.0	6	
7	75	45.6	72.0	71.0	50.6	71.0	69.0	54.0	68.0	66.0	56.4	66.0	66.0	7	
8	64	42.6	64.7	63.4	47.4	63.0	62.0	50.7	63.7	62.3	53.4	62.0	60.0	8	
9	55	39.6	56.6	55.4	44.3	56.5	55.0	47.8	57.3	55.7	50.6	58.0	56.0	9	
10	47	37.1	50.2	49.0	41.1	50.4	48.2	45.4	50.5	48.8	48.2	51.0	49.5	10	
12		33.5	40.4	39.2	35.6	41.0	38.5	40.5	40.5	39.0	43.0	41.2	39.7	12	
14		30.5	33.4	32.2	31.5	34.0	31.5	35.4	33.8	32.2	35.6	34.2	33.0	14	
16					28.2	28.4	26.3	30.5	28.6	26.8	30.5	29.0	27.5	16	
18					25.4	24.2	22.2	26.5	24.4	22.8	26.4	25.2	23.8	18	
20								23.0	21.0	19.6	23.1	21.9	20.5	20	
22								20.5	18.4	17.2	20.4	19.0	17.5	22	
24											18.2	16.9	15.4	24	
26											16.1	14.8	13.3	26	
组合 Code	000000	000001	000100	010000	000011	001100	110000	000111	011100	111000	001111	011110	111100	组合 Code	


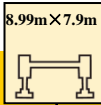


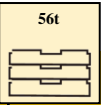

备注：标注*的工况为名义载荷，需加特殊装置。

Notes: The technical data with a * followed are for the nominal load, special equipment is required.

起重性能表

Lifting capacities


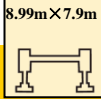



T 38.7~53.4m

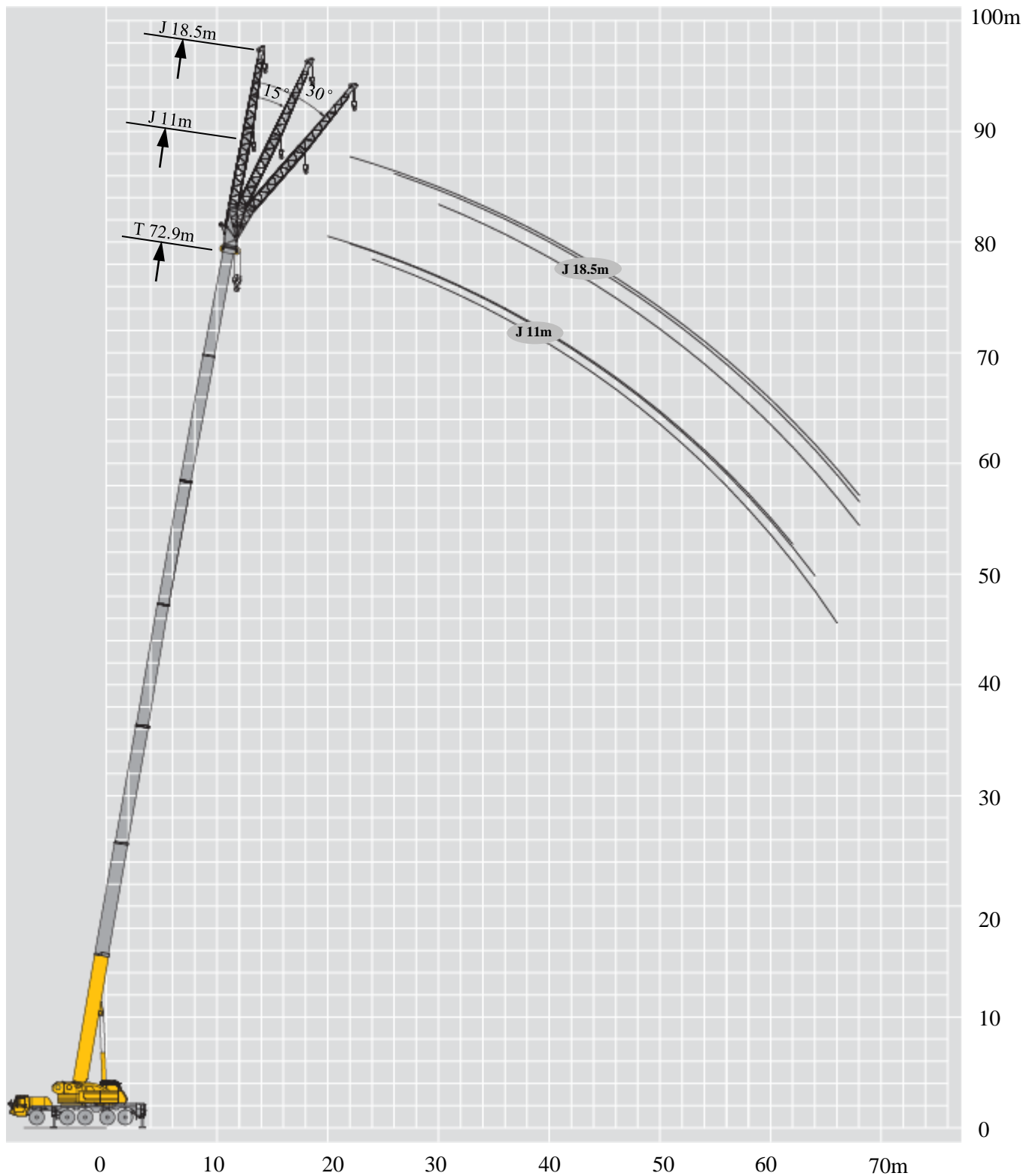
	 38.7	 38.7	 38.7	 43.6	 43.6	43.6	48.5	48.5	48.5	53.4	53.4	53.4	
7	58.0	58.0	58.0										7
8	55.0	56.0	55.0	33.0	49.0	49.0							8
9	52.3	53.0	52.0	31.1	48.0	48.0	24.8	38.0	38.0				9
10	50.0	48.0	46.0	29.4	46.0	45.0	23.4	37.8	38.0	23.5	30.6	31.9	10
12	42.0	40.9	39.2	26.6	41.5	40.0	20.9	33.7	38.0	21.2	28.8	31.9	12
14	35.4	33.8	32.7	24.2	34.5	33.0	19.1	30.5	33.3	19.5	26.5	29.3	14
16	30.0	28.7	27.4	22.0	29.4	28.0	17.5	27.6	28.4	18.1	24.2	26.2	16
18	25.5	24.6	23.3	20.1	25.3	24.1	16.2	24.5	24.5	16.7	21.9	23.4	18
20	22.4	21.2	19.8	18.7	21.5	20.8	14.9	21.8	21.4	15.6	19.8	20.8	20
22	20.0	18.5	17.0	17.4	18.8	18.2	13.8	18.5	18.5	14.6	18.1	18.5	22
24	17.6	16.2	14.9	16.3	17.0	15.7	12.9	16.8	16.5	13.6	16.5	16.3	24
26	15.6	14.1	12.8	15.4	14.9	13.6	12.1	14.7	14.4	12.8	14.7	14.2	26
28	13.8	12.3	11.1	14.5	13.2	11.8	11.2	12.9	12.6	11.9	13.0	12.4	28
30	12.3	10.8	9.6	13.0	11.6	10.3	10.5	11.4	11.1	11.1	11.5	10.9	30
32				11.7	10.3	9.0	10.0	10.1	9.8	10.5	10.2	9.7	32
34				10.5	9.2	7.9	9.4	9.0	8.7	10.0	9.1	8.5	34
36							9.1	8.0	7.7	9.2	8.1	7.5	36
38							8.7	7.1	6.8	8.3	7.2	6.7	38
40							8.2	6.3	6.0	7.5	6.4	5.9	40
42										6.8	5.7	5.2	42
44										6.2	5.0	4.5	44
组合 Code	011111	111110	211100	011112	111111	211110	011122	121111	211111	111122	122111	221111	组合 Code

起重性能表

Lifting capacities

T 58.3~78m

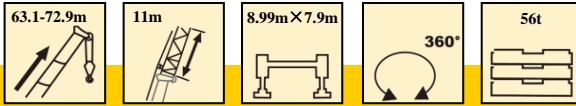
	 58.3-78m	 8.99m×7.9m	 360°	 56t								
	58.3	58.3	58.3	63.1	63.1	63.1	68	68	72.9	78		
12	19.6	22.8	24.2								12	
14	18.6	22.4	24.3	17.1	17.9	18.7					14	
16	17.4	20.5	22.1	16.3	17.6	18.6	14.7	14.1	11.7		16	
18	16.3	18.5	19.8	15.6	16.5	17.6	14.6	14.0	11.7	8.2	18	
20	15.3	16.7	17.7	14.3	14.9	15.8	14.2	13.4	11.8	8.3	20	
22	14.4	15.2	16.1	13.2	13.6	14.3	12.8	12.3	11.4	8.3	22	
24	13.5	14.0	14.6	12.1	12.4	13.1	11.4	11.0	10.2	8.4	24	
26	12.7	12.7	13.3	11.0	11.2	11.8	10.4	10.1	9.4	8.3	26	
28	11.8	11.7	12.3	10.1	10.2	10.6	9.4	9.2	8.7	7.8	28	
30	11.0	10.7	11.0	9.5	9.4	9.7	8.7	8.6	8.0	7.2	30	
32	10.3	10.0	9.7	8.8	8.7	8.9	8.1	7.9	7.4	6.6	32	
34	9.7	9.2	8.6	8.2	8.1	8.3	7.4	7.3	6.9	6.2	34	
36	9.1	8.3	7.6	7.7	7.4	7.6	6.8	6.8	6.4	5.7	36	
38	8.5	7.4	6.7	7.3	7.0	7.0	6.3	6.4	6.0	5.3	38	
40	7.7	6.6	6.0	6.8	6.5	6.2	5.9	6.0	5.6	4.9	40	
42	7.0	5.9	5.3	6.4	6.1	5.5	5.5	5.6	5.2	4.5	42	
44	6.3	5.3	4.6	6.0	5.6	4.9	5.1	5.2	4.8	4.1	44	
46	5.7	4.7	4.0	5.7	5.0	4.3	4.6	4.9	4.4	3.9	46	
48	5.2	4.2	3.5	5.1	4.5	3.8	4.1	4.5	4.1	3.6	48	
50				4.6	4.0	3.3	3.6	4.4	3.9	3.3	50	
52				4.2	3.6	2.8	3.2	4.0	3.6	3.2	52	
54							2.8	3.6	3.2	2.8	54	
56							2.4	3.2	2.8	2.7	56	
58									2.5	2.5	58	
60									2.1	2.2	60	
62										1.9	62	
64										1.6	64	
组合 Code	111222	122211	222111	112222	122221	222211	222221	122222	222222	333333	组合 Code	



起重性能表

Lifting capacities

J 11m

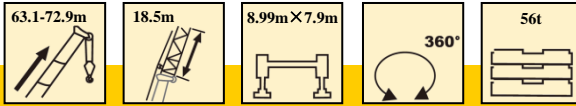


	63.1			68			72.9			
	0°	15°	30°	0°	15°	30°	0°	15°	30°	
16	8.0									16
18	8.0	6.1		7.2						18
20	7.9	5.9	4.5	7.1	5.5		6.4			20
22	7.7	5.7	4.3	7.0	5.4	4.2	6.3	5.1		22
24	7.6	5.6	4.1	6.9	5.3	4.0	6.2	5.0	3.9	24
26	7.4	5.5	4.0	6.8	5.2	3.9	6.2	4.9	3.8	26
28	7.4	5.4	3.8	6.7	5.1	3.8	6.1	4.8	3.7	28
30	7.2	5.3	3.7	6.6	5.1	3.7	6.1	4.7	3.6	30
32	7.0	5.1	3.6	6.6	4.9	3.5	6.0	4.7	3.5	32
34	6.8	5.1	3.5	6.4	4.8	3.4	5.7	4.6	3.4	34
36	6.5	4.9	3.4	6.0	4.8	3.3	5.5	4.6	3.2	36
38	6.2	4.6	3.3	5.4	4.7	3.3	5.0	4.5	3.1	38
40	5.7	4.4	3.1	4.9	4.6	3.2	4.7	4.4	3.1	40
42	5.1	4.3	3.1	4.5	4.3	3.1	4.2	4.2	3.0	42
44	4.8	4.1	3.0	4.3	4.3	3.0	3.9	4.0	3.0	44
46	4.4	4.0	3.0	3.8	3.9	3.0	3.6	3.7	2.9	46
48	3.9	3.9	2.9	3.5	3.5	2.9	3.4	3.4	2.9	48
50	3.4	3.7	2.9	3.2	3.3	2.8	3.1	3.2	2.8	50
52	3.0	3.2	2.8	2.9	3.0	2.8	2.8	2.9	2.8	52
54	2.6	2.8	2.8	2.6	2.7	2.8	2.5	2.6	2.5	54
56	2.2	2.4	2.5	2.4	2.4	2.6	2.3	2.3	2.3	56
58		2.1	2.1	2.1	2.3	2.4	2.1	2.1	2.3	58
60				1.8	1.9	2.0	1.8	1.9	2.0	60
62					1.6	1.7	1.8	1.9	1.8	62
64								1.6	1.6	64
66									1.4	66
组合 Code	222211			222221			222222			组合 Code

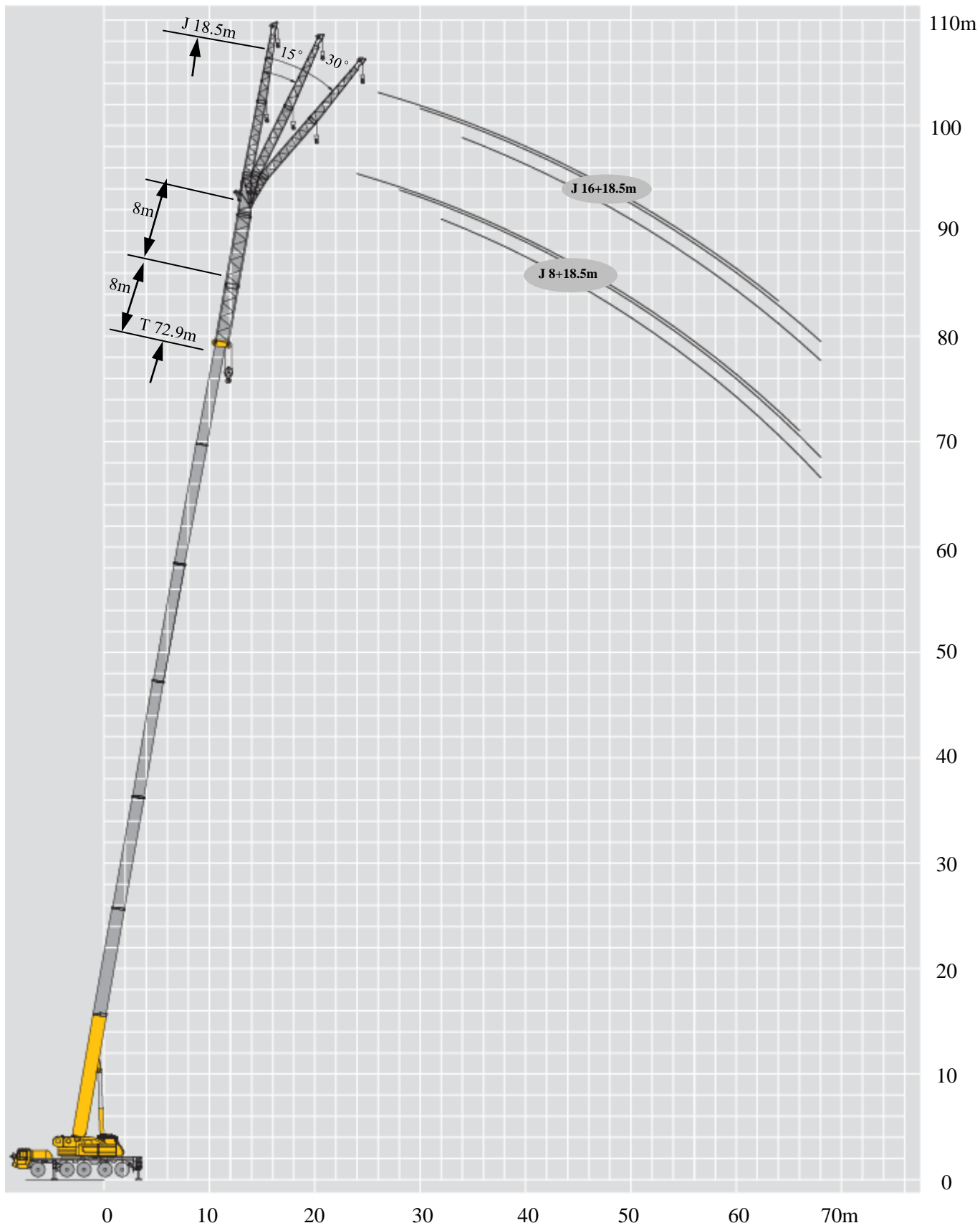
起重性能表

Lifting capacities

J 18.5m



	63.1			68			72.9			
	0°	15°	30°	0°	15°	30°	0°	15°	30°	
18	3.8									18
20	3.9			3.5						20
22	3.9	2.7		3.5			3.1			22
24	3.9	2.5		3.5	2.6		3.1			24
26	3.8	2.4	1.6	3.5	2.5		3.2	2.5		26
28	3.6	2.3	1.6	3.5	2.3	1.6	3.2	2.4		28
30	3.6	2.2	1.5	3.5	2.2	1.5	3.2	2.3	1.5	30
32	3.4	2.1	1.4	3.4	2.1	1.5	3.2	2.2	1.5	32
34	3.3	1.9	1.4	3.3	2.0	1.4	3.2	2.1	1.4	34
36	3.0	1.9	1.4	3.2	1.9	1.4	3.1	1.9	1.4	36
38	2.8	1.8	1.3	3.0	1.9	1.4	2.9	1.9	1.4	38
40	2.7	1.7	1.3	2.9	1.8	1.3	2.9	1.8	1.3	40
42	2.6	1.7	1.3	2.8	1.7	1.3	2.9	1.8	1.3	42
44	2.5	1.6	1.2	2.6	1.6	1.3	2.7	1.7	1.3	44
46	2.3	1.6	1.1	2.4	1.6	1.3	2.6	1.7	1.3	46
48	2.2	1.5	1.2	2.3	1.6	1.2	2.5	1.6	1.2	48
50	2.1	1.4	1.1	2.3	1.5	1.2	2.4	1.6	1.1	50
52	2.0	1.4	1.1	2.2	1.4	1.2	2.3	1.5	1.2	52
54	2.0	1.3	1.1	2.0	1.4	1.1	2.2	1.5	1.1	54
56	1.9	1.4	1.1	2.0	1.4	1.1	2.1	1.5	1.1	56
58	1.8	1.3	1.0	1.9	1.3	1.1	2.1	1.4	1.1	58
60	1.8	1.3	1.1	1.9	1.4	1.0	1.8	1.4	1.1	60
62	1.7	1.2	1.0	1.8	1.3	1.1	1.7	1.4	1.1	62
64	1.5	1.3	1.1	1.6	1.3	1.0	1.5	1.4	1.0	64
66		1.2	1.0	1.4	1.2	1.1	1.3	1.3		66
68					1.3		1.3			68
组合 Code	222211			222221			222222			组合 Code



起重性能表

Lifting capacities

I 8m

	63.1-72.9m			18.5m			8.99m×7.9m			360°			56t						
	63.1+8 m			68+8 m			72.9+8 m			18.5 m									
	0°	15°	30°	0°	15°	30°	0°	15°	30°	0°	15°	30°	0°	15°	30°				
22	3.4			3.0												22			
24	3.4			3.0						2.6						24			
26	3.4	2.5		3.0	2.5					2.6						26			
28	3.5	2.4	1.6	3.1	2.5					2.7	2.4					28			
30	3.4	2.3	1.5	3.1	2.4	1.5				2.7	2.3					30			
32	3.4	2.2	1.5	3.1	2.3	1.5				2.8	2.3	1.5				32			
34	3.3	2.1	1.5	3.1	2.2	1.4				2.8	2.2	1.5				34			
36	3.2	2.0	1.4	3.0	2.0	1.4				2.8	2.1	1.4				36			
38	3.1	2.0	1.4	3.0	2.0	1.5				2.8	2.0	1.4				38			
40	2.9	1.9	1.4	2.9	1.9	1.4				2.8	2.0	1.4				40			
42	2.8	1.8	1.3	2.9	1.8	1.3				2.7	1.9	1.3				42			
44	2.7	1.7	1.3	2.8	1.8	1.4				2.6	1.8	1.3				44			
46	2.6	1.6	1.3	2.7	1.7	1.3				2.6	1.8	1.3				46			
48	2.5	1.6	1.3	2.6	1.6	1.3				2.5	1.7	1.3				48			
50	2.3	1.5	1.2	2.5	1.6	1.3				2.4	1.6	1.2				50			
52	2.2	1.5	1.2	2.4	1.6	1.2				2.2	1.6	1.1				52			
54	2.1	1.5	1.2	2.3	1.5	1.2				2.0	1.6	1.2				54			
56	2.1	1.4	1.1	2.1	1.5	1.2				1.8	1.5	1.1				56			
58	2.0	1.5	1.1	1.9	1.5	1.1				1.6	1.6	1.2				58			
60	2.0	1.4	1.1	1.7	1.4	1.1				1.6	1.5	1.1				60			
62	1.9	1.4	1.1	1.5	1.5	1.1				1.3	1.4	1.1				62			
64	1.6	1.3	1.1	1.4	1.4	1.1				1.2	1.3	1.1				64			
66	1.4	1.4	1.1	1.1	1.3	1.0				1.0	1.1	1.1				66			
68		1.3			1.1						1.0	1.0				68			
组合 Code	222211			222221			222222			222222			222222			组合 Code			

起重性能表

Lifting capacities

I 16m

	63.1+16 m			68+16 m			72.9+16 m			
	18.5 m									
	0°	15°	30°	0°	15°	30°	0°	15°	30°	
24	2.8									24
26	2.9			2.6			2.3			26
28	2.9	2.5		2.5	2.4		2.3			28
30	3.0	2.5		2.6	2.3		2.3	2.1		30
32	3.0	2.4	1.6	2.6	2.3	1.5	2.4	2.1		32
34	3.0	2.3	1.5	2.7	2.3	1.5	2.4	2.0	1.5	34
36	3.0	2.2	1.5	2.8	2.2	1.5	2.4	2.1	1.5	36
38	2.9	2.1	1.4	2.7	2.1	1.4	2.4	2.1	1.4	38
40	2.9	2.0	1.5	2.6	2.1	1.4	2.4	2.0	1.4	40
42	2.8	1.9	1.4	2.6	2.0	1.4	2.4	2.0	1.4	42
44	2.8	1.9	1.3	2.6	1.9	1.4	2.3	1.9	1.3	44
46	2.8	1.8	1.3	2.5	1.9	1.3	2.4	1.9	1.3	46
48	2.7	1.7	1.3	2.5	1.8	1.4	2.3	1.9	1.4	48
50	2.6	1.6	1.3	2.4	1.7	1.3	2.1	1.8	1.3	50
52	2.4	1.6	1.3	2.2	1.6	1.3	1.9	1.8	1.3	52
54	2.3	1.5	1.2	2.0	1.6	1.3	1.7	1.8	1.3	54
56	2.3	1.6	1.2	1.8	1.6	1.2	1.5	1.7	1.3	56
58	2.0	1.5	1.2	1.6	1.5	1.2	1.3	1.4	1.2	58
60	1.8	1.5	1.1	1.4	1.5	1.2	1.1	1.2	1.2	60
62	1.6	1.4	1.1	1.2	1.4	1.2	1.0	1.1	1.2	62
64	1.4	1.5	1.1	1.1	1.1	1.2		1.0	1.1	64
66	1.3	1.4	1.1			1.1				66
68	1.2	1.3	1.1							68
组合 Code	222211			222221			222222			组合 Code

符号标识

Description of symbols

常规标识

General symbols

	上车 Superstructure		底盘 Chassis
	起重能力 Lifting capacity		车桥 Axle
	吊臂长度 Boom length		行驶速度 Driving speed
	工作幅度 Radius		爬坡能力 Grade ability
	吊臂仰角 Boom angle		轮胎 Tires
	主臂起升高度 Hoist height with boom		支腿 Outriggers
	固定副臂长度 Fixed jib length		吊钩 Hook block
	副臂安装角 Jib offset angle		平衡重 Counterweight
	副臂起升高度 Hoist height with jib		卷扬 Winch
	独立臂头 Independent jib head		360°全回转 360° slewing
	主臂加长节 Boom extension		

主要技术参数表

Table of main technical parameters

类别 Category	项目 Item	单位 Unit	参数 Parameter	
尺寸参数 Dimensions	外形尺寸 (长×宽×高) Dimensions (Length×width×height)	mm	16400×3000×4040	
	轴距 Axle spacing	mm	2650+1650+2900+1650	
	轮距 (前/后) Track (Front/ Rear)	mm	2540/2540	
	前悬/后悬 Front/ Rear overhang	mm	2660/2565	
	前伸/后伸 Front/ Rear extension	mm	2325/0	
重量参数 Weight	最大允许总质量 Max. permissible weight	kg	73400	
	轴荷 Axle load	一轴 1st axle	kg	16800
		二轴 2nd axle	kg	17600
		三轴 3rd axle	kg	17600
		四轴 4th axle	kg	10800
	五轴 5th axle	kg	10600	
动力参数 Power	发动机型号 Engine model	—	WP12.460E62	
	最大净功率/转速 Max. net power/rotation speed	kW/(r/min)	333/1900	
	最大输出扭矩/转速 Max. output torque/rotation speed	N.m/(r/min)	2185/950-1400	
行驶参数 Travel	最高车速 Max. travel speed	km/h	20	
	最低稳定车速 Min. travel speed	km/h	3	
	最小转弯直径 Min. turning diameter	m	≤19.5	
	臂头最小转弯直径 Min. turning diameter at boom tip	m	≤27.5	
	最小离地间隙 Min. ground clearance	mm	352	
	接近角 Approach angle	°	20	
	离去角 Departure angle	°	12	
	最大爬坡能力 Max. grade ability	%	≥40	
	百公里油耗 Fuel consumption per 100 km	L	70	
噪音 Noise	加速行驶机外噪声 Exterior noise level	dB(A)	≤86	
	驾驶员耳旁噪声 Noise level at seated position	dB(A)	≤90	

主要技术参数表

Table of main technical parameters

类别 Category	项目 Item		单位 Unit	参数 Parameter	
主要性能参数 Main performance	最大额定总起重量 Max. total rated lifting capacity		t	160	
	最小额定工作幅度 Min. rated working radius		m	2.5	
	转台尾部回转半径 Turning radius at turntable tail	平衡重处 Counterweight	mm	5110	
		副卷处 Auxiliary winch	mm	4960	
	最大起重力矩 Max. load moment	基本臂 Base boom	kN.m	5145	
		最长主臂 Fully-extended boom	kN.m	2115	
		最长主臂+副臂 Fully-extended boom + Jib	kN.m	1940	
	支腿跨距 Outrigger span	纵向 Longitudinal	m	8.99	
		横向 Lateral	m	7.9	
	起升高度 Hoist height	基本臂 Base boom	m	14.9	
		最长主臂 Fully-extended boom	m	76.9	
		最长主臂+副臂 Fully-extended boom + Jib	m	103.1	
	起重臂长度 Boom length	基本臂 Base boom	m	14.4	
		最长主臂 Fully-extended boom	m	78	
		最长主臂+副臂 Fully-extended boom + Jib	m	107.4	
副臂安装角 Jib offset angle		°	0、15、30		
工作速度参数 Working speed	起重臂起臂时间 Boom raising time		s	≤60	
	起重臂全伸时间 Boom fully extended time		s	≤760	
	最大回转速度 Max. slewing speed		r/min	≥1.5	
	支腿收放时间 Outrigger extending and retracting time	水平支腿 Outrigger beam	收 Retracting	s	≤40
			放 Extending	s	≤40
		垂直支腿 Outrigger jack	收 Retracting	s	≤60
			放 Extending	s	≤90
起升速度 (单绳,第四层,空载) Hoisting speed (single line, 4th layer, no load)	主起升机构 Main winch		m/min	≥135	
	副起升机构 Auxiliary winch		m/min	≥90	
噪声 Noise	机外辐射 Exterior noise level		dB (A)	≤110	
	司机位置处 Noise level at seated position		dB (A)	≤85	

注意事项

Notes

1. 表中额定总起重量值，是在平整的坚固地面上本起重机能够保证的最大总起重量，包括吊钩和吊具的重量，所以为了估算重物重量，必须减去上述的装置重量。
2. 表中的工作幅度为起吊重物离地时起重物到起重机回转轴线的水平距离，是包括起重臂变形量在内的实际值，因而起吊前应考虑起重臂变形量。
3. 只允许在5级(瞬时风速14.1m/s，风压125N/m²)风以下进行作业。
4. 吊重前操作者必须对物体的重量和工作范围了解后选择合适的作业工况，严禁超出表中的数值。幅度及臂长在相邻两个数值之间时，应依据两个数值中较小值确定起重作业。
5. 应按主臂仰角范围作业，即使是空载，也不应使主臂仰角处于范围外，谨防整机倾翻。
6. 表中的主臂长度应要按照每节臂的伸缩要求进行伸出。

1. The total rated loads given in the rated load charts are the maximum lifting capacity when the crane is set up on firm and level ground, which includes the weight of the hook block and slings. The weight of above-mentioned devices should be deducted from the rated lifting load.
2. The working radius shown in the rated load charts is the radius when the load is lifted off the ground, and it is the actual value including loaded boom deflection. Take boom deflection into consideration before beginning a lifting operation.
3. A lifting operation is permissible only when the wind force is below grade 5 (instantaneous wind speed is 14.1 m/s, wind pressure is 125 N/m²).
4. Before beginning lifting operation, the operator should know the weight of the load to be lifted and its working range, and then select proper working conditions. Never operate the crane beyond the limit shown in the chart. Use the lower value from the chart when the boom length or working radius is between the range of values.
5. Observe the boom angle limit. Never operate the crane with the boom angle beyond the recommended limit even if a load is not being carried. Otherwise, the crane will tip.
6. The boom should be extended according to the telescoping code shown by digits, which means the percentage of boom sections extended.



地址: 江苏省徐州市经济技术开发区高新路68号

Add: No.68 Gaoxin Road, Xuzhou Economic and Technological Development zone, Jiangsu ,China

电话(Tel): +86-516-83462242/83462350

质量监督电话(Quality Inquiry Tel): +86-516-87888268

备件电话(Spare Parts Tel): +86-516-83461542

邮编(Post Code): 221004

网址(Web): www.xcmg.com/qizhongji

服务热线 Service Tel

400-110-9999

400-001-5678



本印刷品不属于合同。出于产品不断改进的需要，我们保留对产品型号、参数、配置进行变更的权利，恕不另行通知。图片仅供参考，具体产品以实物为准。图片中产品可能并非标准配置，部分部件可能需要另行购置。办理牌照和上路行驶需遵守当地法规。

This print does not belong to the contract. We reserve the right to modify the design (such as product model, parameters and configuration) without notice for improvement. The pictures are just for reference. The product in the picture may not be standard configuration. Some parts need to be purchased separately. Conform to the local laws for license application and road traveling.