

徐工徐工 助您成功
XCMG FOR YOUR SUCCESS



XGC100-I 履带起重机 CRAWLER CRANE



地址/Address: 中国江苏徐州经济技术开发区金山路19号 邮编/Postal Code: 221004
No.19 Jianshen Road, Economic development zone of jishanqiao,Xuzhou,Jiangsu Province,China
统一服务热线/Unified service hotline: 86-400-110-9999
销售热线/Sales Hotline
销售电话/Sale Tel: 86 0516-87892034 服务热线/Service Tel: 86 400-001-5678
销售传真/Sale Fax: 86 0516-87892074 服务热线/Service Fax: 86 0516-87892080
电子邮箱/E-mail: jyd@xcmg.com 客户电话/Service Tel: 86 0516-87892086
质量监督部电话/Quality Supervision Tel: 86 0516-87892587 客户传真/Service Fax: 86 0516-87892083



扫码即可下载
产品信息及参数

扫码即可下载
产品信息及参数

徐工集团工程机械股份有限公司
XCMG CONSTRUCTION MACHINERY CO.,LTD



目录 CONTENTS

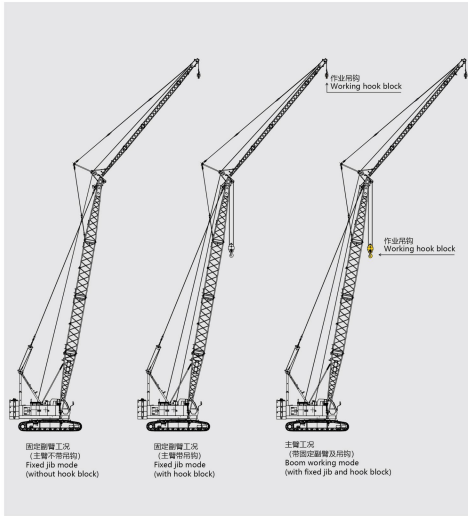
P02	<ul style="list-style-type: none"> 产品亮点 Product Highlights 主要技术参数 The Main Technical Parameters 简介介绍 Brief Introduction
P09	<ul style="list-style-type: none"> 工况示意图 Working Mode Illustration 主臂工况臂架组合 Boom Combinations 主臂作业范围图 Boom Working Area 主臂起吊性能表 Boom Lifting Load Chart 臂端单滑轮起吊性能表 Boom Single Pulley Lifting Load Chart
P17	<ul style="list-style-type: none"> 固定臂架臂架组合 Fixed Jib Combinations 固定臂架作业范围图 Fixed Jib Working Area 固定臂架起吊性能表 Fixed Jib Lifting Load Chart 主要零部件 Main parts 工作条件及注意 Working conditions and Cautions

02

XGC100-I 履带起重机 XGC100-I CRAWLER CRANE

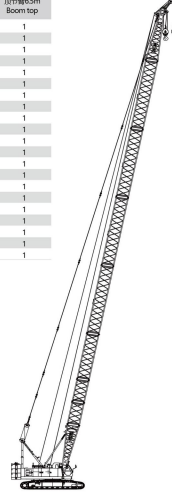
P03-P03	产品亮点 Product Highlights
P04-P04	主要技术参数 The Main Technical Parameters
P05-P08	简介介绍 Brief Introduction

工况示意图
Working Mode Illustration

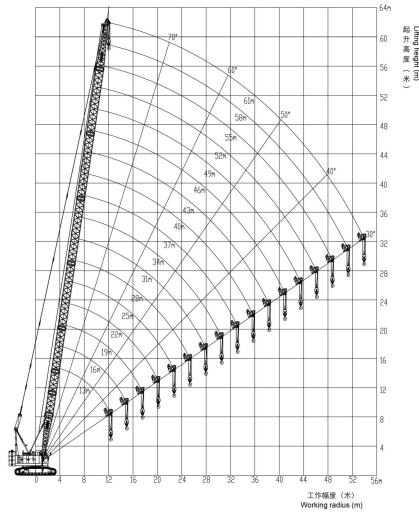


主臂工况臂节组合
Boom Combinations

主臂长度 Boom length (m)	固定臂架5m Boom butt 5m	中间臂节 Boom insert			固定臂架5m Boom top 5m
		3m	6m	9m	
13	1	—	—	—	1
16	1	1	—	—	1
19	1	—	1	—	1
22	1	—	—	1	1
25	1	1	1	—	1
28	1	—	1	1	1
31	1	—	—	2	1
34	1	1	1	1	1
37	1	—	1	2	1
40	1	—	—	3	1
43	1	1	1	2	1
46	1	—	1	3	1
49	1	—	—	4	1
52	1	1	1	3	1
55	1	—	1	4	1
58	1	1	1	4	1
61	1	2	1	4	1



主臂作业范围图
Boom Working Area



主臂起重性能表
Boom Lifting Load Chart

工作幅度 Working radius (m)	主臂长度 Boom length (m)										工作幅度 Working radius (m)	
	13	16	19	22	25	28	31	34	37			
3.6	100.0										3.6	
4	88.6										4	
5	68.1	67.9	67.8								5	
6	55.8	55.7	55.6	55.4	54.0						6	
7	47.2	47.1	47.0	46.8	46.3	44.6	43.1				7	
8	40.7	40.6	40.6	40.5	39.8	38.6	37.3	36.1	35.0		8	
9	34.3	34.2	34.1	34.1	34.0	32.9	32.9	31.9	31.0		9	
10	29.6	29.5	29.4	29.3	29.2	29.2	29.1	28.5	27.7		10	
12	23.1	22.9	22.9	22.8	22.7	22.6	22.5	22.4	22.3		12	
14		18.7	18.6	18.5	18.4	18.3	18.2	18.1	18.0		14	
16			15.6	15.5	15.4	15.3	15.2	15.0	14.9		16	
18				13.2	13.1	13.0	12.9	12.8	12.7		18	
20					11.5	11.4	11.3	11.2	11.0	10.9	20	
22						10.0	9.9	9.8	9.6	9.5	22	
24							8.8	8.7	8.5	8.4	24	
26								7.7	7.6	7.5	26	
28									6.9	6.8	28	
30										6.1	30	
32											5.4	32

主臂起重性能表
Boom Lifting Load Chart

工作幅度 Working radius (m)	主臂长度 Boom length (m)							工作幅度 Working radius (m)	
	40	43	46	49	52	55	58		61
9	30.1	29.2						9	
10	26.9	26.2	25.5	22.8				10	
12	22.2	21.6	21.0	20.5	19.2	16.9	15.0	12	
14	17.9	17.7	17.6	17.3	16.9	16.2	14.4	14	
16	14.8	14.7	14.6	14.5	14.3	14.1	13.7	12.2	16
18	12.6	12.4	12.3	12.2	12.0	11.9	11.8	11.5	18
20	10.8	10.7	10.6	10.4	10.3	10.2	10.0	9.8	20
22	9.4	9.3	9.2	9.0	8.9	8.8	8.6	8.4	22
24	8.3	8.1	8.0	7.9	7.7	7.6	7.4	7.3	24
26	7.3	7.2	7.1	7.0	6.8	6.7	6.5	6.3	26
28	6.5	6.4	6.3	6.2	6.0	5.9	5.7	5.5	28
30	5.9	5.7	5.6	5.5	5.3	5.2	5.0	4.8	30
32	5.3	5.1	5.0	4.9	4.7	4.6	4.4	4.2	32
34	4.7	4.6	4.5	4.4	4.2	4.1	3.9	3.7	34
36		4.1	4.0	3.9	3.7	3.6	3.4	3.2	36
38		3.7	3.6	3.5	3.3	3.2	3.0	2.8	38
40			3.2	3.1	3.0	2.8	2.7	2.5	40
42				2.8	2.6	2.5	2.3	2.1	42
44					2.3	2.2	2.0	1.8	44
46						2.1	1.9	1.6	46
48							1.7	1.5	48
50								1.3	50

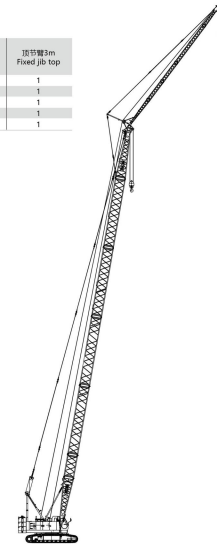
臂端单滑轮起重性能表
Boom Single Pulley Lifting Load Chart

工作幅度 Working radius (m)	主臂长度 Boom length (m)							工作幅度 Working radius (m)	
	13	16	19	22	25	28	31		34
5.0	8.0	8.0							5.0
6.0	8.0	8.0	8.0	8.0					6.0
7.0	8.0	8.0	8.0	8.0	8.0	8.0			7.0
8.0	8.0	8.0	8.0	8.0	8.0	8.0	8.0	8.0	8.0
9.0	8.0	8.0	8.0	8.0	8.0	8.0	8.0	8.0	9.0
10.0	8.0	8.0	8.0	8.0	8.0	8.0	8.0	8.0	10.0
12.0	8.0	8.0	8.0	8.0	8.0	8.0	8.0	8.0	12.0
14.0		8.0	8.0	8.0	8.0	8.0	8.0	8.0	14.0
16.0		8.0	8.0	8.0	8.0	8.0	8.0	8.0	16.0
18.0			8.0	8.0	8.0	8.0	8.0	8.0	18.0
20.0				8.0	8.0	8.0	8.0	8.0	20.0
22.0					8.0	8.0	8.0	8.0	22.0
24.0						8.0	8.0	8.0	24.0
26.0							7.8	7.6	26.0
28.0								7.0	28.0
30.0									30.0
32.0									32.0
34.0									34.0

工作幅度 Working radius (m)	主臂长度 Boom length (m)							工作幅度 Working radius (m)
	40	43	46	49	52	55	58	
9.0	8.0							9.0
10.0	8.0	8.0	8.0					10.0
12.0	8.0	8.0	8.0	8.0	8.0	8.0		12.0
14.0	8.0	8.0	8.0	8.0	8.0	8.0	8.0	14.0
16.0	8.0	8.0	8.0	8.0	8.0	8.0	8.0	16.0
18.0	8.0	8.0	8.0	8.0	8.0	8.0	8.0	18.0
20.0	8.0	8.0	8.0	8.0	8.0	8.0	8.0	20.0
22.0	8.0	8.0	8.0	8.0	8.0	8.0	8.0	22.0
24.0	8.0	8.0	8.0	8.0	8.0	7.8	7.7	24.0
26.0	7.4	7.2	7.1	7.0	6.8	6.7	6.6	26.0
28.0	6.6	6.4	6.3	6.2	6.0	5.9	5.7	28.0
30.0	5.9	5.7	5.6	5.5	5.3	5.2	5.1	30.0
32.0	5.3	5.1	5.0	4.9	4.7	4.6	4.5	32.0
34.0	4.8	4.6	4.5	4.4	4.2	4.1	3.9	34.0
36.0	4.3	4.2	4.0	3.9	3.8	3.6	3.5	36.0
38.0		3.7	3.6	3.5	3.3	3.2	3.1	38.0
40.0			3.3	3.1	3.0	2.9	2.7	40.0
42.0				2.9	2.8	2.6	2.5	42.0
44.0					2.5	2.3	2.2	44.0
46.0						2.1	1.8	46.0
48.0							1.7	48.0
50.0								50.0
52.0								52.0

固定副臂节组合
Fixed Jib Combinations

副臂长度 Fixed jib length (m)	底节臂4m Fixed jib butt 4m	中间节臂 Fixed jib insert		顶节臂3m Fixed jib top 3m
		3m	6m	
7	1	—	—	1
10	1	1	—	1
13	1	—	1	1
16	1	1	1	1
19	1	2	1	1



17

XGC100-I 履带起重机
XGC100-I CRAWLER CRANE

- P18-P18 固定副臂节组合
Fixed Jib Combinations
- P19-P19 固定副臂作业范围图
Fixed Jib Working Area
- P20-P25 固定副臂起重性能表
Fixed Jib Lifting Load Chart
- P26-P29 主要零部件
Main parts
- P30-P30 工作条件及注意
Working conditions and Cautions

固定副臂起重性能表
Fixed Jib Lifting Load Chart

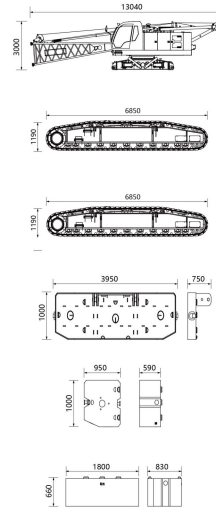
副臂长 Jib length(m)	7								副臂长 Jib length(m)
	30°								
副臂安装角度 Jib angle(°)									副臂安装角度 Jib angle(°)
主臂长 Boom length(m)	31	34	37	40	43	46	49	52	主臂长 Boom length(m)
工作幅度 Working radius(m)									工作幅度 Working radius(m)
12	11.0	11.2	11.4						12
14	10.3	10.5	10.7	11.0	8.0	8.0			14
16	9.7	9.9	10.1	10.5	8.0	8.0	8.0	8.0	16
18	9.2	9.4	9.6	10.0	8.0	8.0	8.0	8.0	18
20	8.7	9.0	9.2	9.5	8.0	8.0	8.0	8.0	20
22	8.3	8.6	8.8	9.1	8.0	8.0	8.0	8.0	22
24	8.0	8.2	8.4	8.5	8.0	8.0	8.0	8.0	24
26	7.7	7.7	7.6	7.5	7.4	7.3	7.2	7.0	26
28	7.0	6.9	6.8	6.7	6.5	6.4	6.3	6.2	28
30	6.3	6.2	6.1	6.0	5.8	5.7	5.6	5.5	30
32	5.7	5.6	5.5	5.4	5.2	5.1	5.0	4.8	32
34	5.1	5.0	4.9	4.8	4.7	4.6	4.4	4.3	34
36		4.5	4.4	4.3	4.2	4.1	4.0	3.8	36
38			4.0	3.9	3.8	3.7	3.5	3.4	38
40				3.6	3.5	3.4	3.2	3.0	40
42					3.2	3.0	2.9	2.8	42
44						2.7	2.6	2.5	44
46							2.3	2.2	46
48								2.0	48
50									50
52									52

副臂长 Jib length(m)	13								副臂长 Jib length(m)
	30°								
副臂安装角度 Jib angle(°)									副臂安装角度 Jib angle(°)
主臂长 Boom length(m)	31	34	37	40	43	46	49	52	主臂长 Boom length(m)
工作幅度 Working radius(m)									工作幅度 Working radius(m)
16	6.0	6.1	6.2						16
18	5.6	5.8	5.9	6.0	6.0	6.2	6.3		18
20	5.3	5.5	5.6	5.7	5.7	5.9	6.0	6.0	20
22	5.1	5.2	5.3	5.4	5.5	5.7	5.7	5.8	22
24	4.8	5.0	5.1	5.2	5.3	5.4	5.5	5.6	24
26	4.6	4.8	4.9	5.0	5.0	5.2	5.3	5.4	26
28	4.4	4.6	4.7	4.8	4.9	5.0	5.1	5.2	28
30	4.3	4.4	4.5	4.6	4.7	4.8	4.9	5.0	30
32	4.1	4.3	4.4	4.4	4.5	4.7	4.8	4.8	32
34	4.0	4.1	4.2	4.3	4.4	4.5	4.6	4.7	34
36	3.9	4.0	4.1	4.2	4.3	4.4	4.4	4.5	36
38	3.8	3.9	4.0	4.1	4.1	4.1	4.0	3.9	38
40	3.8	3.8	3.9	3.8	3.7	3.6	3.5	3.3	40
42		3.6	3.6	3.5	3.3	3.2	3.1	3.0	42
44			3.2	3.1	3.0	2.9	2.8	2.6	44
46				2.9	2.8	2.7	2.6	2.5	46
48					2.5	2.4	2.3	2.2	48
50						2.2	2.1	2.0	50
52							1.8	1.7	52
54								1.6	54
56									56
58									58

固定副臂起重性能表
Fixed Jib Lifting Load Chart

副臂长 Jib length(m)	19								副臂长 Jib length(m)
	30°								
副臂安装角度 Jib angle(°)									副臂安装角度 Jib angle(°)
主臂长 Boom length(m)	31	34	37	40	43	46	49	52	主臂长 Boom length(m)
工作幅度 Working radius(m)									工作幅度 Working radius(m)
22	3.5	3.6	3.6	3.6					22
24	3.4	3.4	3.5	3.5	3.5	3.5	3.5	3.6	24
26	3.3	3.3	3.3	3.4	3.4	3.4	3.5	3.5	26
28	3.2	3.2	3.2	3.3	3.3	3.3	3.4	3.4	28
30	3.1	3.1	3.2	3.2	3.2	3.3	3.3	3.3	30
32	3.0	3.0	3.1	3.1	3.1	3.2	3.2	3.2	32
34	2.9	2.9	3.0	3.0	3.1	3.1	3.1	3.1	34
36	2.8	2.8	2.9	3.0	3.0	3.0	3.1	3.1	36
38	2.7	2.8	2.8	2.9	2.9	3.0	3.0	3.0	38
40	2.6	2.7	2.7	2.8	2.9	2.9	2.9	3.0	40
42	2.5	2.6	2.7	2.7	2.8	2.8	2.9	2.9	42
44	2.5	2.5	2.6	2.7	2.7	2.8	2.8	2.8	44
46	2.4	2.5	2.5	2.6	2.6	2.7	2.7	2.6	46
48		2.4	2.5	2.5	2.6	2.5	2.4	2.3	48
50			2.4	2.5	2.4	2.3	2.2	2.0	50
52				2.4	2.3	2.1	2.0	1.9	52
54					2.0	1.9	1.8	1.7	54
56						1.7	1.6	1.5	56
58							1.4	1.3	58
60								1.2	60
62									62

主要零部件
Main parts

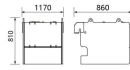


本机运输方案 Basic machine transport plan	+1
长(L)	13040mm
宽(W)	3400mm
高(H)	3000mm
重量(W)	23.6 t
左履带架 Left track frame	+1
长(L)	6850mm
宽(W)	1000mm
高(H)	1190mm
重量(W)	9.7t
右履带架 Right track frame	+1
长(L)	6850mm
宽(W)	1000mm
高(H)	1190mm
重量(W)	9.7t
平衡重托盘 Counterweight tray	+1
长(L)	3950mm
宽(W)	1000mm
高(H)	750mm
重量(W)	6.0t
左右平衡重块 Left and counterweight slab	+6
长(L)	1000mm
宽(W)	950mm
高(H)	590mm
重量(W)	2.0 t
平衡重块 I Counterweight slab I	+2
长(L)	1800mm
宽(W)	830mm
高(H)	660mm
重量(W)	5.1 t

主要零部件
Main parts



平衡重块 Counterweight slab	x1
长(L)	1800mm
宽(W)	830mm
高(H)	540mm
重量(W)	3.8 t



下车平衡重块 Car-body counterweight	x2
长(L)	1170mm
宽(W)	860mm
高(H)	810mm
重量(W)	1.1t



100t吊钩 100t Hook block	x1
长(L)	705mm
宽(W)	630mm
高(H)	1650mm
重量(W)	0.96t



55t吊钩 55t Hook block	x1
长(L)	540mm
宽(W)	630mm
高(H)	1500mm
重量(W)	0.62t



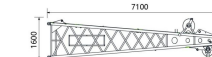
35t吊钩 35t Hook block	x1
长(L)	340mm
宽(W)	630mm
高(H)	1350mm
重量(W)	0.46t



8t吊钩 8t Hook block	x1
长(L)	320mm
宽(W)	320mm
高(H)	750mm
重量(W)	0.25 t



主臂5m底座 5m boom base	x1
长(L)	6670mm
宽(W)	1690mm
高(H)	1570mm
重量(W)	1.25t



主臂5m吊钩 5m boom loop	x1
长(L)	7100mm
宽(W)	1690mm
高(H)	1600mm
重量(W)	1.3t



主臂5m中间节 5m boom insert section	x4
长(L)	9120mm
宽(W)	1690mm
高(H)	1420mm
重量(W)	0.9t

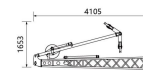


主臂5m中间节 5m boom insert section	x1
长(L)	6120mm
宽(W)	1690mm
高(H)	1420mm
重量(W)	0.65t



主臂3m中间节 3m boom insert section	x2
长(L)	3120mm
宽(W)	1690mm
高(H)	1420mm
重量(W)	0.405 t

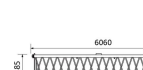
主要零部件
Main parts



固定臂端节 (含合架及前拉基本拉索) Fixed jib butt(with strut)	x1
长(L)	4105mm
宽(W)	700mm
高(H)	1633mm
重量(W)	0.5t



固定臂端3m节 Fixed jib 3m	x2
长(L)	3060mm
宽(W)	655mm
高(H)	485mm
重量(W)	0.21t



固定臂端6m节 Fixed jib 6m	x1
长(L)	6060mm
宽(W)	655mm
高(H)	485mm
重量(W)	0.38t



固定臂端顶节 Fixed jib top	x1
长(L)	3330mm
宽(W)	655mm
高(H)	633mm
重量(W)	0.22t



臂端单滑轮 Boom head single sheave	x1
长(L)	1400mm
宽(W)	625mm
高(H)	562mm
重量(W)	0.12t

工作条件及注意
Working conditions
and Cautions

工作条件 Working conditions

1. 本起重机的作业条件为：臂长≤50m时风速小于14.1m/s,臂长>50m时风速小于9.8m/s,环境温度-20℃~+40℃,地面倾斜度小于1%。
The crane working conditions: boom length ≤50m when wind speed is less than 14.1m/s; boom length > 50m when wind speed is less than 9.8m/s; the ambient temperature is -20℃~+40℃, and the ground gradient is less than 1%.

2. 额定起重性能表是在标准条件下,货物自由起吊,在额定起重性能表上标注的起吊重量,作业者应视各种不同条件(如松软或不平、风力、坡度及臂、摆动作用、多台起重机合力起吊等)限制或降低起吊重量。
The rated lifting load in the chart are the maximum lifting capacity on the condition that the given working conditions are met and the load is in the state of free suspension and lifted slowly from the solid ground. Operators should limit or reduce lifting capacity according to different conditions (such as soft or uneven ground, wind force, side loading, oscillating action, several crane cooperate lifting).

3. 额定起重性能表中的重量包括主绳钩、钢丝绳和衬绳钩所有吊具的重量,各吊具重量单独列出的重量如下表:
The rated lifting capacity in the chart includes the weight of main hook block, wire rope and all slings. The weight of each hook block and boom single top is shown in the table below:

100t吊钩 100t hook block	55t吊钩 55t hook block	35t吊钩 35t hook block	8t吊钩 8t hook block	臂端单滑轮 Booms single top
0.96t/ton	0.62t/ton	0.45t/ton	0.25t/ton	0.12t/ton

4. 额定表中没有列出额定起重性能的空白区为非工作区,起重机不允许在该区域内进行起重作业。
The blank area of the chart where no rated lifting load listed is regarded as non-operation area, so crawler crane is not allowed to carry out lifting operation in this area.

5. 表中重量为额定起重性能重量。
The lifting load in the chart includes the lifting capacity of full counterweight.

6. 本机允许带载低速行驶,主臂工况,臂端单滑轮工况时额定起重性能表执行,固定臂端6m节时50%额定起重性能表执行。
This crawler crane is allowed to travel slowly with a suspended load, boom and boom single pulley working mode the maximum load weight is 90% of rated lifting load given in the load chart; fixed jib working mode the maximum load weight is 50% of rated lifting load given in the load chart for the crane travel.

7. 吊钩及吊钩的选用应参照吊钩块及吊钩零件表。
In any case, the selection of hook block and parts of line must satisfy that the hook block rated lifting load is more than or equal to the actual lifting load (including wire rope, slings and etc.).

吊钩按下表选取: Parts of line is according to the table below:

吊钩Parts of line	1	2	3	4	5	6	7	8	9	10	11	12	13	14
最大起重量Max. lifting load	8	16	23	31	38	45	53	60	67	75	80	88	94	100

单绳用于臂端单滑轮, The one part of line is used for boom single top.