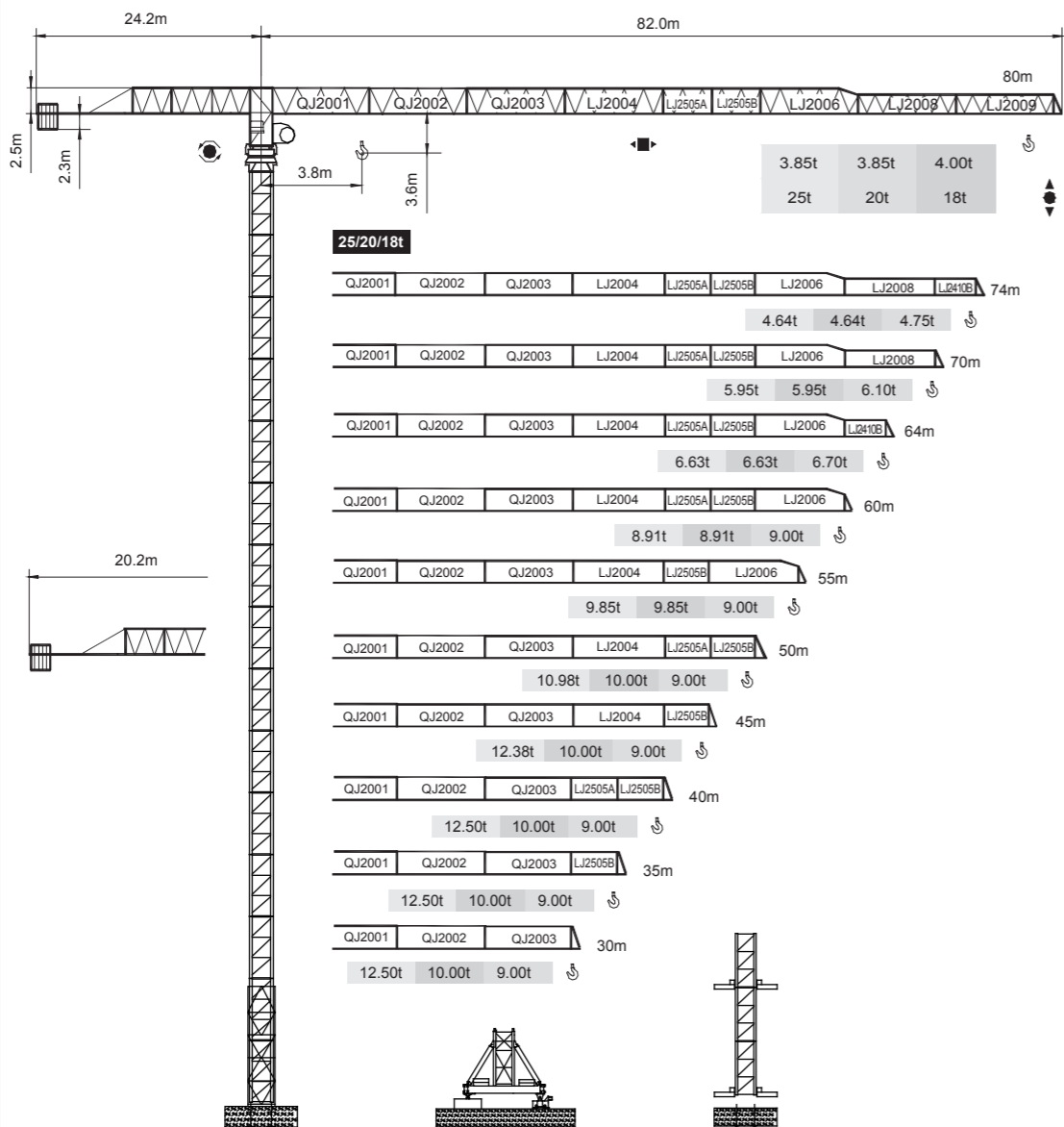


永茂建机
YONGMAO

STT553B
25/20/18t



CE FEM

Topless

V 5.3-05272015

平頭系列

0 0
1 1
5 6

Topless STT553B
Topless STT553B

STT553B
25/20/18t

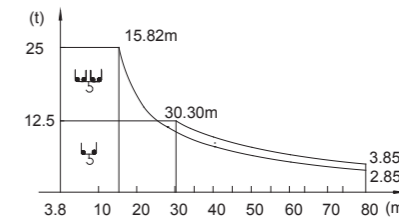
載荷表

25t Load Chart

雙小車 Double trolleys

Q-25-A(B)-TP1-V1.0

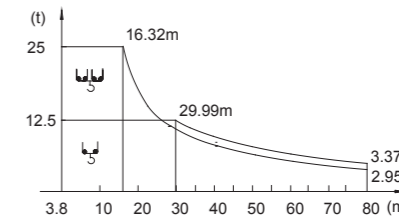
R (m)	倍率 Fall	R(C _{max}) (m)	C _{max} (t)	30	35	40	45	50	55	60	64	70	74	80
80	UU	15.82	25.00	11.65	9.61	8.08	6.91	5.97	5.21	4.58	4.15	3.59	3.27	2.85
	LD	30.30	12.50	12.50	10.60	9.08	7.91	6.97	6.21	5.58	5.14	4.59	4.27	3.85
74	UU	16.80	25.00	12.57	10.39	8.77	7.52	6.52	5.71	5.03	4.57	3.98	3.64	
	LD	32.25	12.50	12.50	11.39	9.77	8.51	7.52	6.70	6.03	5.57	4.98	4.64	
70	UU	19.26	25.00	14.89	12.36	10.49	9.04	7.88	6.95	6.17	5.63	4.95		
	LD	37.11	12.50	12.50	12.50	11.48	10.03	8.88	7.94	7.16	6.63	5.95		
64	UU	19.26	25.00	14.89	12.36	10.49	9.04	7.88	6.95	6.17	5.63			
	LD	37.11	12.50	12.50	11.48	10.03	8.88	7.94	7.16	6.63				
60	UU	23.03	25.00	18.44	15.39	13.13	11.38	9.99	8.85	7.91				
	LD	44.60	12.50	12.50	12.50	12.50	12.38	10.98	9.85	8.91				
55	UU	23.03	25.00	18.44	15.39	13.13	11.38	9.99	8.85					
	LD	44.60	12.50	12.50	12.50	12.50	12.38	10.98	9.85					
50	UU	23.03	25.00	18.44	15.39	13.13	11.38	9.99						
	LD	44.60	12.50	12.50	12.50	12.50	12.38	10.98						
45	UU	23.03	25.00	18.44	15.39	13.13	11.38	9.99						
	LD	44.60	12.50	12.50	12.50	12.50	12.38	10.98						
40	UU	23.32	25.00	18.94	15.82	13.50								
	LD	40.00	12.50	12.50	12.50	12.50								
35	UU	23.32	25.00	18.94	15.82									
	LD	35.00	12.50	12.50	12.50									
30	UU	23.32	25.00	18.94										
	LD	30.00	12.50	12.50										



單小車 Single trolley

Q-25-A(B)-TP2-V1.0

R (m)	倍率 Fall	R(C _{max}) (m)	C _{max} (t)	30	35	40	45	50	55	60	64	70	74	80
80	UU	16.32	25.00	12.08	9.96	8.38	7.16	6.19	5.40	4.74	4.29	3.72	3.38	2.95
	LD	29.99	12.50	12.49	10.37	8.80	7.58	6.61	5.82	5.16	4.71	4.14	3.80	3.37
74	UU	17.25	25.00	12.96	10.71	9.03	7.74	6.71	5.87	5.18	4.70	4.09	3.74	
	LD	31.76	12.50	12.50	11.13	9.45	8.16	7.13	6.29	5.60	5.12	4.51	4.16	
70	UU	19.67	25.00	15.24	12.65	10.73	9.24	8.06	7.10	6.30	5.75	5.05		
	LD	36.35	12.50	12.50	12.50	11.15	9.66	8.48	7.52	6.72	6.17	5.47		
64	UU	19.67	25.00	15.24	12.65	10.73	9.24	8.06	7.10	6.30	5.75			
	LD	36.35	12.50	12.50	11.15	9.66	8.48	7.52	6.72	6.17				
60	UU	23.36	25.00	18.73	15.63	13.32	11.54	10.12	8.97	8.01				
	LD	43.35	12.50	12.50	12.50	12.50	11.96	10.54	9.39	8.43				
55	UU	23.36	25.00	18.73	15.63	13.32	11.54	10.12	8.97					
	LD	43.35	12.50	12.50	12.50	12.50	11.96	10.54	9.39					
50	UU	23.36	25.00	18.73	15.63	13.32	11.54	10.12						
	LD	43.35	12.50	12.50	12.50	12.50	11.96	10.54						
45	UU	23.36	25.00	18.73	15.63	13.32	11.54	10.12						
	LD	43.35	12.50	12.50	12.50	12.50	11.96	10.54						
40	UU	23.76	25.00	19.10	15.95	13.60								
	LD	40.00	12.50	12.50	12.50	12.50								
35	UU	23.76	25.00	19.10	15.95									
	LD	40.00	12.50	12.50	12.50									
30	UU	23.76	25.00	19.10										
	LD	40.00	12.50	12.50										



Topless STT553B



YONGMAO HOLDINGS LIMITED



YONGMAO HOLDINGS LIMITED

平頭系列

STT553B

25/20/18t

20t Q-20-A(B)-TP1-V1.0

R (m)	倍率 Fall	R(C _{max}) (m)	C _{max} (t)	30	35	40	45	50	55	60	64	70	74	80
80	UU	19.14	20.00	11.65	9.61	8.08	6.91	5.97	5.21	4.58	4.15	3.59	3.27	2.85
	LD	36.81	10.00	10.00	10.00	9.08	7.91	6.97	6.21	5.58	5.14	4.59	4.27	3.85
74	UU	20.36	20.00	12.57	10.39	8.77	7.52	6.52	5.71	5.03	4.57	3.98	3.64	
	LD	39.21	10.00	10.50	10.39	9.77	8.51	7.52	6.70	6.03	5.57	4.98	4.64	
70	UU	23.35	20.00	14.89	12.36	10.49	9.04	7.88	6.95	6.17	5.63	4.95		
	LD	45.14	10.00	10.00	10.00	10.00	10.00	8.88	7.94	7.16	6.63	5.95		
64	UU	23.35	20.00	14.89	12.36	10.49	9.04	7.88	6.95	6.17	5.63			
	LD	45.14	10.00	10.00	10.00	10.00	10.00	8.88	7.94	7.16	6.63			
60	UU	27.96	20.00	18.44	15.39	13.13	11.38	9.99	8.85	7.91				
	LD	54.28	10.00	10.00	10.00	10.00	10.08	10.00	9.85	8.91				
55	UU	27.96	20.00	18.44	15.39	13.13	11.38	9.99	8.85					
	LD	54.28	10.00	10.00	10.00	10.00	10.00	10.00	9.85					
50	UU	28.00	20.00	18.44	15.39	13.13	11.38	9.99						
	LD	50.00	10.00	10.00	10.00	10.00	10.00	10.00						
45	UU	28.00	20.00	18.44	15.39	13.13	11.38							
	LD	50.00	10.00	10.00	10.00	10.00	10.00							
40	UU	29.15	20.00	18.94	15.82	13.50								
	LD	40.00	10.00	10.00	10.00	10.00								
35	UU	29.15	20.00	18.94	15.82									
	LD	35.00	10.00	10.00	10.00									
30	UU	29.15	20.00	18.94										
	LD	30.00	10.00	10.00										

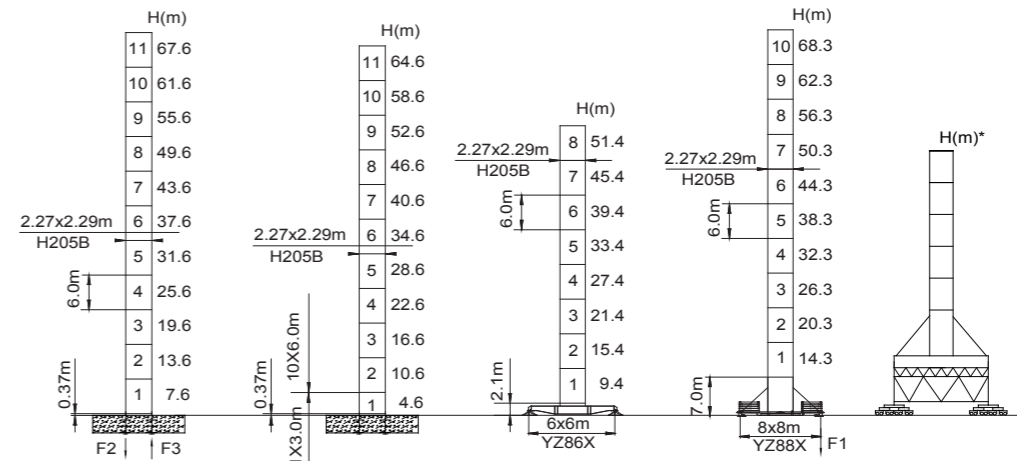
18t Q-18-A(B)-TP1-V1.0

R (m)	倍率 Fall	R(C _{max}) (m)	C _{max} (t)	30	35	40	45	50	55	60	64	70	74	80
80	UU	20.60	18.00	11.74	9.78	8.40	7.30	6.42	5.71	5.12	4.71	4.19	3.89	3.50
	LD	38.70	9.00	9.00	9.00	8.68	7.63	6.79	6.11	5.55	5.16	4.66	4.37	4.00
74	UU	21.39	18.00	12.59	10.31	9.02	7.73	6.93	6.10	5.54	5.12	4.57	4.25	
	LD	41.56	9.00	9.00	9.00	8.25	7.35	6.62	6.01	5.59	5.06	4.75		
70	UU	25.60	18.00	15.07	12.64	10.88	9.50	8.40	7.51	6.76	6.25	5.60		
	LD	49.10	9.00	9.00	9.00	9.00	8.82	7.95	7.23	6.74	6.10			
64	UU	25.30	18.00	14.88	12.49	10.76	9.40	8.31	7.43	6.70	6.20			
	LD	48.90	9.00	9.00	9.00	9.00	8.78	7.92	7.19	6.70				
60	UU	30.70	18.00	18.00	15.52	13.35	11.67	10.33	9.24	8.33				
	LD	60.00	9.00	9.00	9.00	9.00	9.08	9.00	9.00					
55	UU	30.70	18.00	18.00	15.52	13.35	11.67	10.33	9.24					
	LD	60.00	9.00	9.00	9.00	9.00	9.00	9.00						
50	UU	30.60	18.00	18.00	15.54	13.43	11.80	10.50						
	LD	50.00	9.00	9.00	9.00	9.00	9.00							
45	UU	30.60	18.00	18.00	15.54	13.43	11.80							
	LD	50.00	9.00	9.00	9.00	9.00								
40	UU	30.60	18.00	18.00	15.63	13.60								
	LD	40.00	9.00	9.00	9.00	9.00								
35	UU	30.60	18.00	18.00	15.63									
	LD	35.00	9.00	9.00	9.00									
30	UU	30.00	18.00	18.00										
	LD	30.00	9.00	9.00										

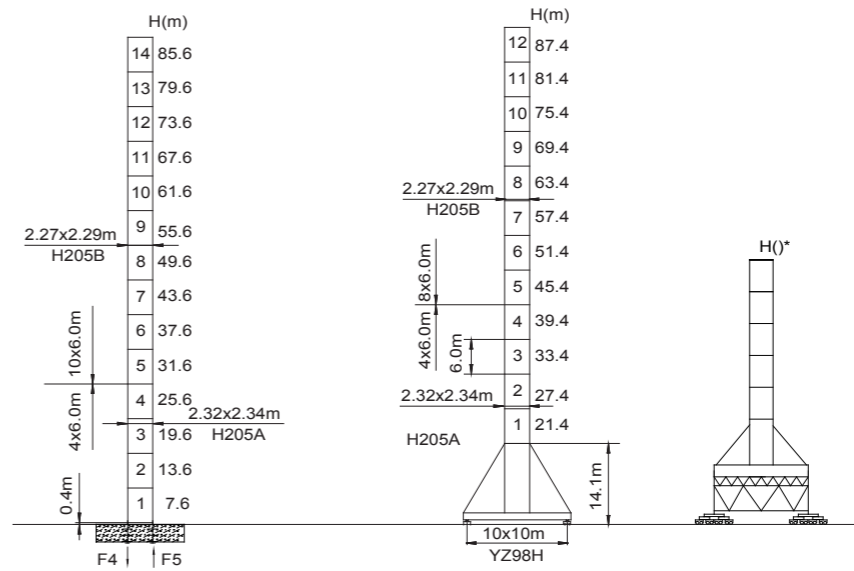
Topless STT553B

STT553B

25/20/18t



	●	■		●	■
F2	280t	289t		F1	137t
F3	183t	203t			168t
	⊗	145t		⊗	168t



	●	■
F4	325t	443t
F5	216t	347t
⊗	167t	

● 工作狀態支反力 In service reaction ■ 非工作狀態支反力 Out of service reaction
 ⊗ 整機自由高度重量(不含平衡重及壓重重量) Total weight of free standing crane (excludes counter weight & ballast)

0 0
1 1
7 8

Topless STT553B
Topless STT553B



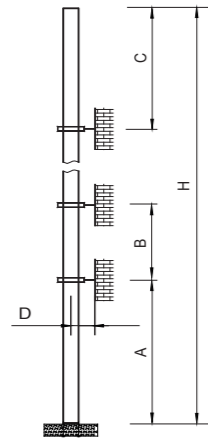
YONGMAO HOLDINGS LIMITED



YONGMAO HOLDINGS LIMITED

STT553B

25/20/18t

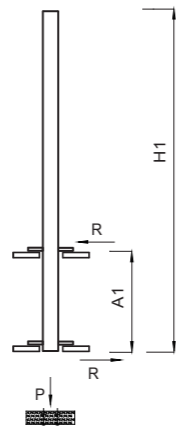


塔身節 Mast	A (m)	B (m)	C (m)	D (m)	H (m)
H205B	57	42	52.6	>4.0	400 >400*
H205BT	54	42	52.6	>4.0	400 >400*

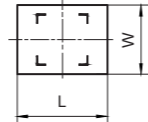
附著道數 Number of tie collars = (H-A-C)/B+1

超過100m高度，需降低載荷，請與公司聯繫。

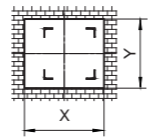
Load should be reduced when the height exceeds 100m. Please contact Yongmao for details.



內爬框外廓尺寸
Overall dimensions of the internal climbing frame



內爬開口尺寸
Dimensions of the internal climbing opening



內爬開口尺寸
Dimensions of the internal climbing opening

塔身節 Mast	H1 (m)	A1 (m)	P (t)	R (t)	X (m)	Y (m)	L (m)	W (m)
H205B	61.2	20	159	42	3.28	2.4	3.5	3.02

平頭系列

STT553B

25/20/18t

主要性能參數 Specification

機構 Mechanism	U		UU		電動機 Motor kW		
	m/min	t	m/min	t			
25t	110LFV63 ☆	0-38 0-46 0-72	12.5 10.0 4.0	0-19 0-23 0-36	25.0 20.0 8.0	550 m	110
	90LFV63DB1	0-40 0-96 0-160	12.5 4.0 1.0	0-20 0-48 0-80	25.0 8.0 2.0	1030m >1030m*	90
20t	90LFV50 ☆	0-37 0-44 0-75	10.0 8.0 3.0	0-18 0-22 0-37	20.0 16.0 6.0	550m	90
	75LFV50DB1	0-32 0-96 0-150	10.0 3.0 1.0	0-16 0-48 0-75	20.0 6.0 2.0	1030m >1030m*	75
18t	75LFV45 ☆	0-38 0-46 0-76	9.0 6.0 3.0	0-19 0-23 0-38	18.0 12.0 6.0	680 m	75
	75LFV45DB1	0-40 0-96 0-160	9.0 3.0 1.0	0-20 0-48 0-80	18.0 6.0 2.0	1030m >1030m*	75
11 DFV10	0-65 m/min						11
RTC435 ☆	0-0.8 rpm						3x145 N·m
7.5RFCV	0-0.8 rpm						3x145 N·m
RT	12.5-25 m/min						6x2.6/5.2

供電容量 Power supply	kVA
380V (±10%) 50 Hz	110LFV63 : 165 90LFV63DB1, 90LFV50 : 135 75LFV50DB1, 75LFV45, 75LFV45DB1 : 115

* 與製造商聯繫 Contact us, please.

☆ 标准配置 Standard configuration.

本技術參數不受法律約束，技術資訊請詳見相應說明書。
These specifications and data are not legally binding. For any technical information, please refer to corresponding instructions.



YONGMAO HOLDINGS LIMITED



YONGMAO HOLDINGS LIMITED

Topless STT553B
Topless STT553B