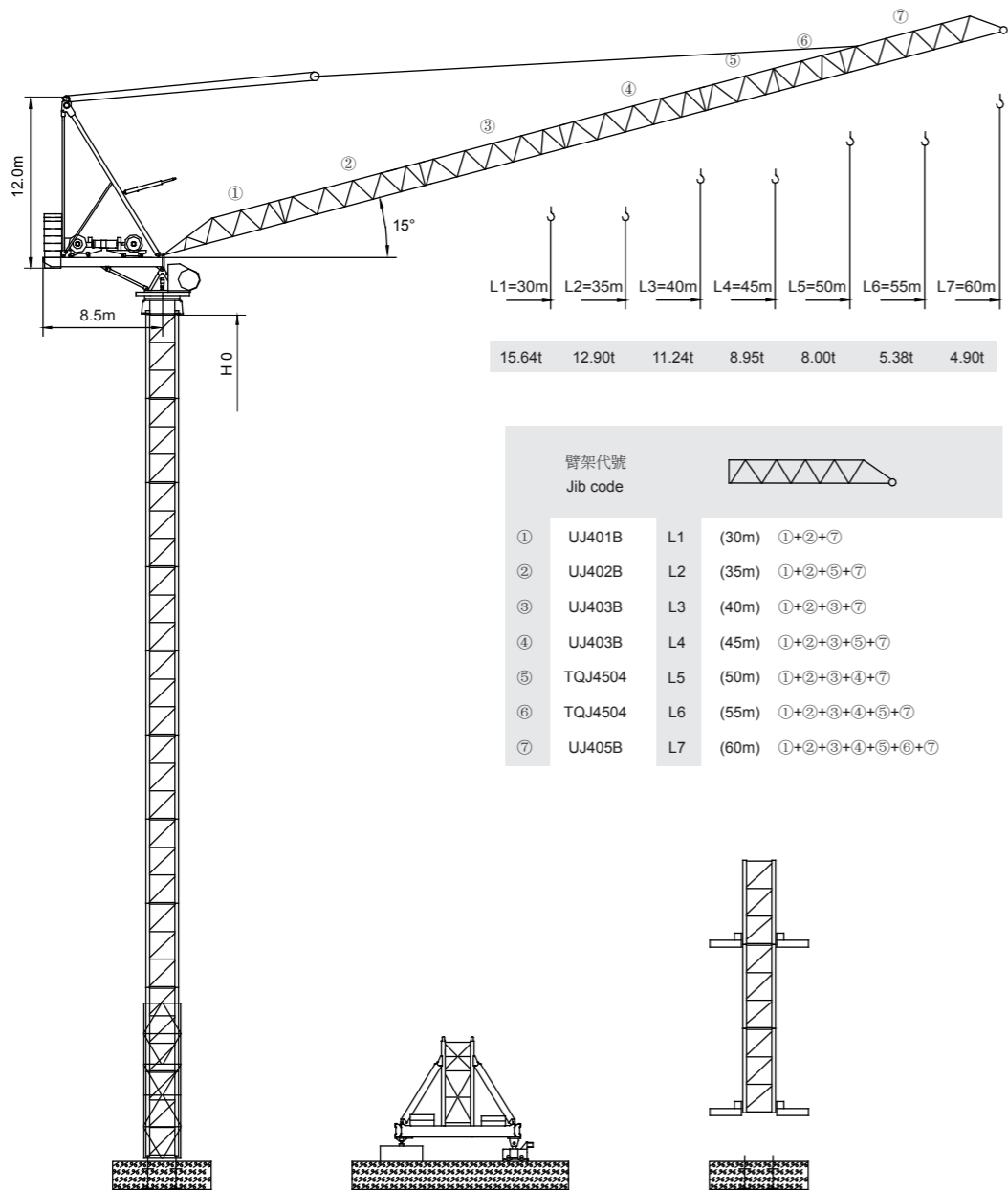


永茂建机 YONGMAO

STL420 24t



臂架代號 Jib code		圖示	
①	UJ401B L1 (30m)	①+②+⑦	
②	UJ402B L2 (35m)	①+②+⑤+⑦	
③	UJ403B L3 (40m)	①+②+③+⑦	
④	UJ403B L4 (45m)	①+②+③+⑤+⑦	
⑤	TQJ4504 L5 (50m)	①+②+③+④+⑦	
⑥	TQJ4504 L6 (55m)	①+②+③+④+⑤+⑦	
⑦	UJ405B L7 (60m)	①+②+③+④+⑤+⑥+⑦	



Luffing

V 5.0-04262016

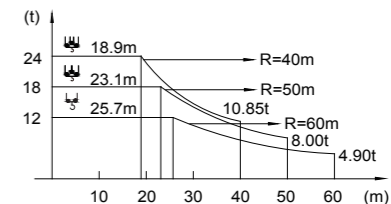
動臂系列

STL420 24t

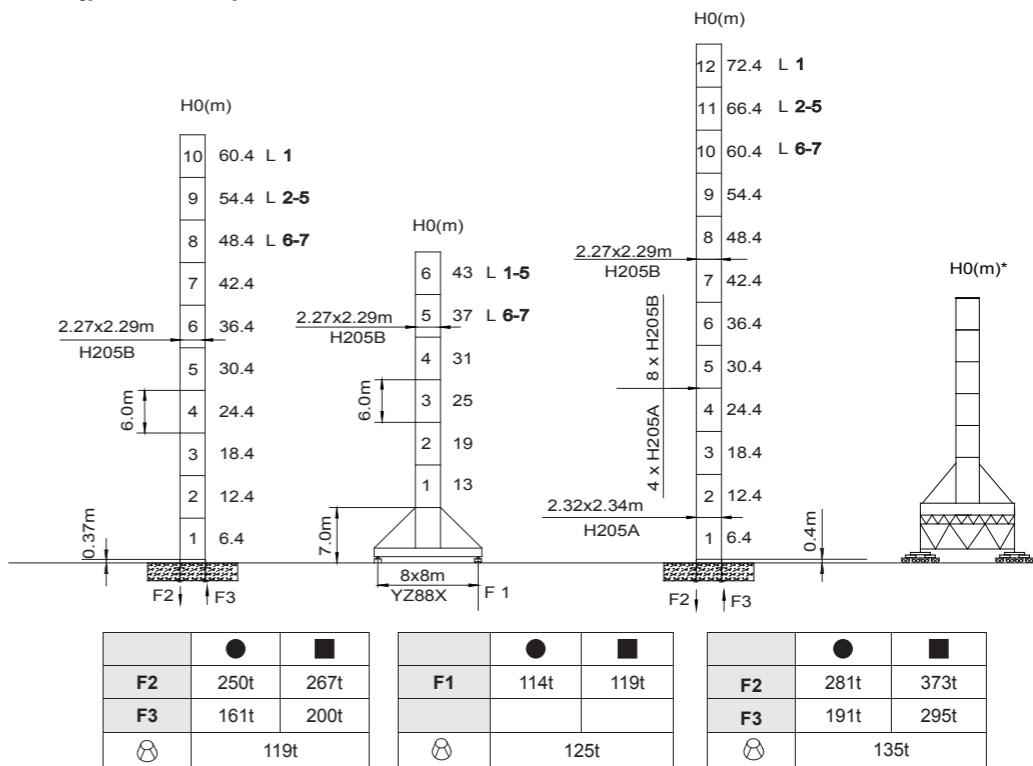
載荷表 Load Chart

U-24-B-4-V1.0

R (m)	Fall	R(Cmax) (m)	Cmax (t)	15	20	25	30	35	40	45	50	55	60
60	↓	5.57~25.7	12.00	12.00	12.00	12.00	10.23	8.70	7.57	6.68	5.97	5.38	4.90
55	↓	4.97~25.7	12.00	12.00	12.00	12.00	10.23	8.70	7.57	6.68	5.97	5.38	
50	↓	4.67~32.9	12.00	12.00	12.00	12.00	12.00	11.23*	9.71*	8.53*	7.60*		
	↓	4.67~23.1	18.00	18.00	18.00	16.59	13.70	11.68	10.14	8.95	8.00		
45	↓	4.07~32.9	12.00	12.00	12.00	12.00	12.00	11.23*	9.71*	8.53*			
	↓	4.07~23.1	18.00	18.00	18.00	16.59	13.70	11.68	10.14	8.95			
40	↓	3.78~36.3	12.00	12.00	12.00	12.00	12.00	12.00	10.85*				
	↓	3.78~25.3	18.00	18.00	18.00	18.00	15.12	12.90	11.24				
35	↓	3.78~18.9	24.00	24.00	22.66	17.90	14.73	12.53	10.85				
	↓	3.17~35.0	12.00	12.00	12.00	12.00	12.00	12.00					
30	↓	3.17~25.3	18.00	18.00	18.00	18.00	15.12	12.90					
	↓	3.17~18.9	24.00	24.00	22.63	17.92	14.78	12.53					
25	↓	2.88~30.0	12.00	12.00	12.00	12.00	12.00						
	↓	2.88~19.4	24.00	23.29	23.26	18.45	15.25						



*=+400kg[↓-50m-45m-40m]



● 工作狀態支反力 In service reaction ■ 非工作狀態支反力 Out of service reaction
⊗ 整機自由高度重量 (不含平衡重及壓重重量) Total weight of free standing crane (excludes counter weight & ballast.)

Luffing STL420



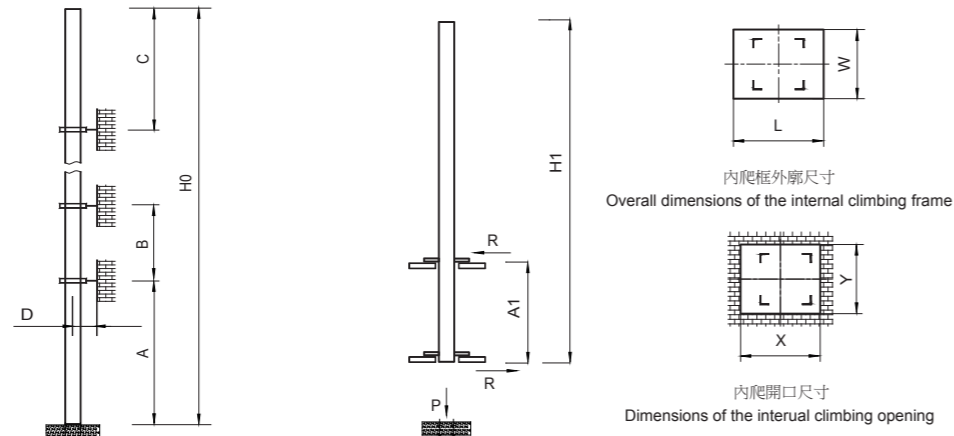
YONGMAO HOLDINGS LIMITED



YONGMAO HOLDINGS LIMITED

Luffing STL420
Luffing STL420

STL420 24t



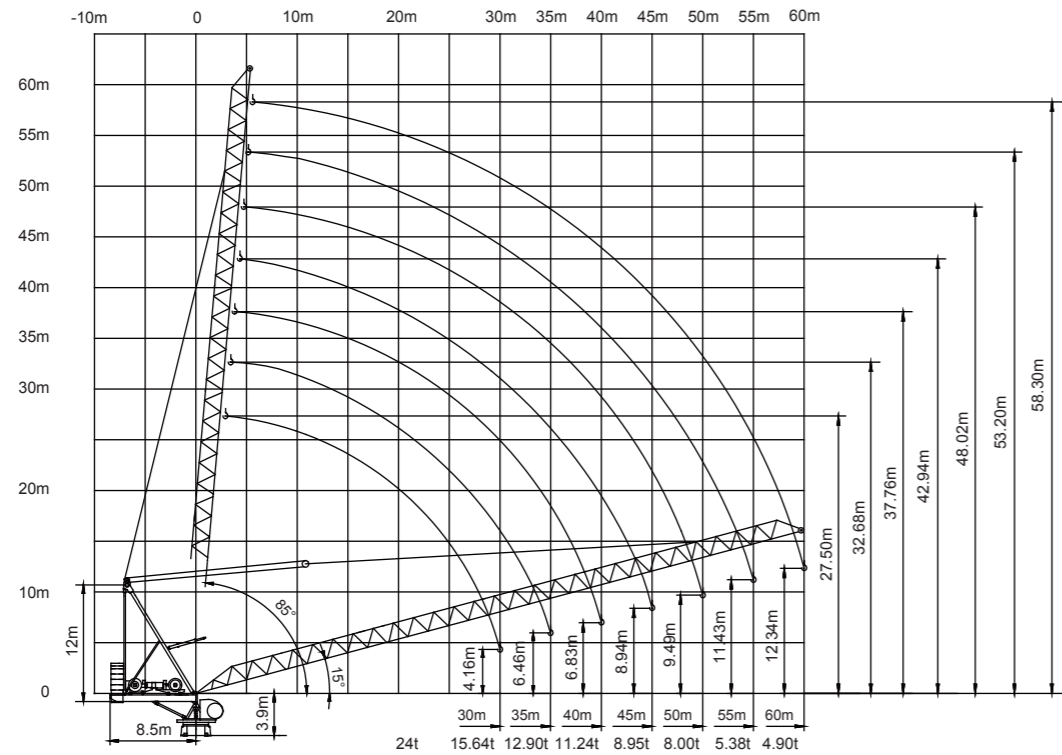
塔身節 Mast	臂長 Jib length	A (m)	B (m)	C (m)	D (m)	H0 (m)
H205B	L1	30/48	24/32	32	>4	390 >390*
	L2-5	30/42	24/30	30		
	L6-7	30/36	24/28	28		

塔身節 Mast	臂長 Jib length	H1 (m)	A1 (m)	P (t)	R (t)	X (m)	Y (m)	L (m)	W (m)
H205B	L1	60	18	160	34	3.28	2.40	3.50	3.02
	L2-5	48		158	32				
	L6-7	42		154	31				

附著道數 Number of tie collars=(H0-A-C)/B+1

超過100m高度，需降低載荷，請與公司聯繫。

Load should be reduced when the height exceeds 100m. Please contact Yongmao for details.



動臂系列

STL420 24t

主要性能參數 Specifications

機構 Mechanism	Icon 1		Icon 2		Icon 3		Icon 4	電動機 Motor kW
	m/min	t	m/min	t	m/min	t		
90LFV60DB1*	0-40	12.0	0-26	18.0	0-20	24.0	1030m > 1030m*	90
	0-96	4.0	0-64	6.0	0-48	8.0		
	0-160	1.0	0-106	1.5	0-80	2.0		
90LFV60	0-38	12.0	0-25	18.0	0-19	24.0	550m	90
	0-46	10.0	0-30	15.0	0-23	20.0		
	0-72	4.0	0-48	6.0	0-36	8.0		
90DFV60B	15° - 85° 3.0min						90	2x145 N·m
RTC290	0 - 0.8 rpm							
7.5RFCV								
RT	12.5 - 25 m/min						4x2.6/5.2	

供電容量 Power supply	kVA
380V (± 10%) 50 Hz	90LFV60DB1 : 270 90LFV60 : 245

* 與製造商聯繫 Contact us, please.

☆ 标准配置 Standard configuration.

1 1
7 7
5 6

本技術參數不受法律約束，技術資訊請詳見相應說明書。

These specifications and data are not legally binding. For any technical information, please refer to corresponding instructions.



YONGMAO HOLDINGS LIMITED

Luffing STL420
Luffing STL420



YONGMAO HOLDINGS LIMITED