



TIONG WOON OFFSHORE PTE. LTD.

-A member of Tiong Woon Corporation Holding Ltd-

TIONG WOON OCEAN 18

3,200BHP Towing Tug



GENERAL PARTICULARS

Flag	:	Malaysia
Class	:	BV
Year Built	:	2008
Notation	:	I \boxtimes Hull \boxtimes Mach Tug, Unrestricted Navigation
Official No	:	336983
Call Sign	:	9 MRQ 9
Imo	:	9529542

PERFORMANCE

Bollard Pull	:	40 Tons approx
Maximum Speed	:	12 Knots approx
Economical Speed	:	9.5 Knots approx
Deck Strength	:	2.5 Tons/m ²
Deck Space	:	113.96m ²

PRINCIPAL DIMENSIONS

Length Moulded	:	36.00m
Breadth Moulded	:	10.40m
Depth Moulded	:	5.00m
Design Draft	:	4.00m
GRT / NRT	:	454 / 136

MACHINERY

Main Engine	:	2 x Cummins KTA 50-M2 1600BHP @ 1800 rpm
Generator	:	2 x Cummins 240 KW 415V/3/50Hz
Gearbox	:	Reintjes Gearbox Ratio 5.95:1
Bow Thruster	:	3 Tons, electric driven, model : ATB Sever
Steering Gear	:	Electro Hydraulic approx 3t.m x 35 deg x 2 Electro Hydraulic Steering Gear
Propulsion System	:	4 Blade Bronze, fixed pitch propellers with fixed nozzles

Specifications are believed to be correct but not guaranteed. Updated on 13th September 2019

Page 1 of 3

Tiong Woon Offshore Pte. Ltd.

Co. Reg. No. 200304922M

No 15 Pandan Crescent, Singapore 128470

Tel: (65) 62617888 Fax: (65) 6777 4544

Tiong Woon Corporation Holding Ltd

(Group Head Office)

Co. Reg. No. 199705837C

No 15 Pandan Crescent, Singapore 128470

Tel: (65) 6261 7888 Fax: (65) 6777 4544

Crane & Transport Booking Hotline: (65) 6777 8882

Email: enquiry@tiongwoon.com

Webpage: www.tiongwoon.com



KATO HICOM
KATO HEAVY INDUSTRIES CONSTRUCTION MACHINERY CO., LTD.



ZOOMLION
Exclusive Distributor for
Zoomlion Tower Crane in
Singapore



TIONG WOON OFFSHORE PTE. LTD.

-A member of Tiong Woon Corporation Holding Ltd-

TIONG WOON OCEAN 18 3,200BHP Towing Tug

DECK MACHINERY & EQUIPMENT

Anchor Windlass	:	1 x Electric-Hydraulic anchor windlass c/w double gypsy drum
Anchor	:	2 x 570kg stockless anchor
Anchor Chain	:	2 x Dia. 24mm studlink chains
Electro Tugger Winch	:	1 x 5T @ 15 m/min
Hyd Capstan	:	1 x 5T Electro Hyd. capstans with pulling force of 5 tons @ 15 m/min
Towing Winch	:	1 x Hyd. double drum
Wire Size	:	Dia. 44 mm x 600 m length
Line Pull (1 st)	:	40 Tons
Brake Holding	:	80 Tons on 1 st layer for each drum
Tow Pin	:	1 x 200Ton
Shark Jaw	:	1 x 200Ton
Stern Roller	:	1 x 150MT S.W.L.

TANK CAPACITY

Fuel Capacity	:	299 Tons approx
Fresh Water Capacity	:	100 Tons approx
Lube Oil	:	3.0 Tons approx

ACCOMODATION

Berth	:	2 x 1 man cabin = 2 men
	:	1 x 2 men cabin = 2 men
	:	3 x 4 men cabin = <u>12 men</u>
Total		<u>16 men</u>
Sewage Plant	:	capacity 16 men

NAVIGATION & COMMUNICATION EQUIPMENT

Radar, Magnetic Compass, Echo Sounder, DGPS, Autopilot, GMDSS, MF/HF, VHF-DSC, Radar responder, EPIRB, Navtex Receiver, Inmarsat-C, SSB, SART, AIS

LIFE SAVING APPARATUS

As per SOLAS requirement

Specifications are believed to be correct but not guaranteed. Updated on 13th September 2019

Page 2 of 3

Tiong Woon Offshore Pte. Ltd.
Co. Reg. No. 200304922M
No 15 Pandan Crescent, Singapore 128470
Tel: (65) 62617888 Fax: (65) 6777 4544

Tiong Woon Corporation Holding Ltd
(Group Head Office)
Co. Reg. No. 199705837C
No 15 Pandan Crescent, Singapore 128470
Tel: (65) 6261 7888 Fax: (65) 6777 4544
Crane & Transport Booking Hotline: (65) 6777 8882
Email: enquiry@tiongwoon.com
Webpage: www.tiongwoon.com



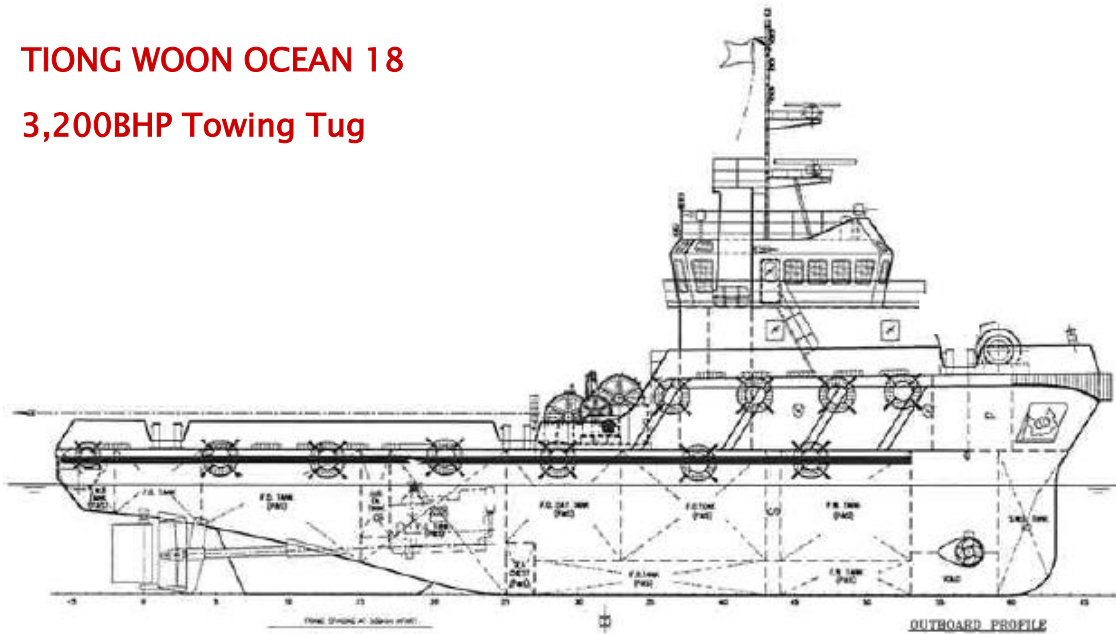


TIONG WOON OFFSHORE PTE. LTD.

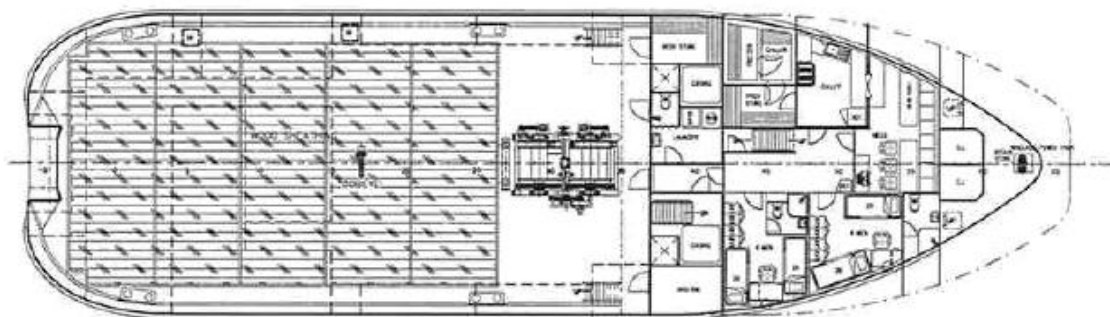
-A member of Tiong Woon Corporation Holding Ltd-

TIONG WOON OCEAN 18

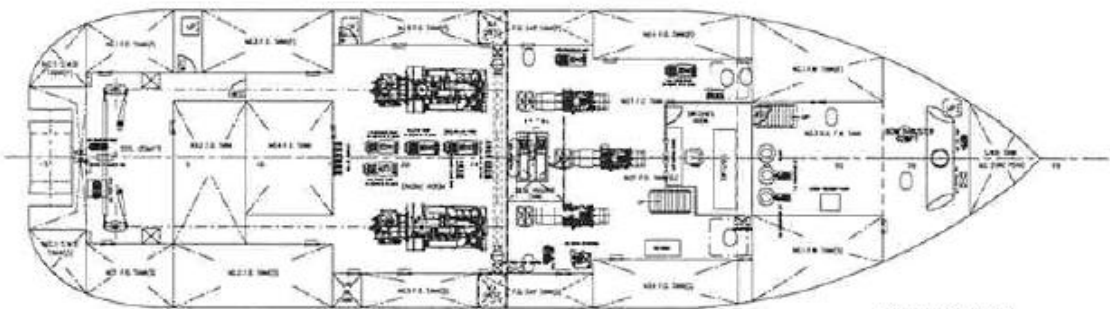
3,200BHP Towing Tug



OUTBOARD PROFILE



MAIN DECK PLAN



BELOW MAIN DECK

Specifications are believed to be correct but not guaranteed. Updated on 13th September 2019

Page 3 of 3

Tiong Woon Offshore Pte. Ltd.
Co. Reg. No. 200304922M
No 15 Pandan Crescent, Singapore 128470
Tel: (65) 62617888 Fax: (65) 6777 4544

Tiong Woon Corporation Holding Ltd
(Group Head Office)
Co. Reg. No. 199705837C
No 15 Pandan Crescent, Singapore 128470
Tel: (65) 6261 7888 Fax: (65) 6777 4544
Crane & Transport Booking Hotline: (65) 6777 8882
Email: enquiry@tiongwoon.com
Webpage: www.tiongwoon.com

