

PALFINGER

Operating Manual, Betriebsanleitung

Hydraulic Crane, Hydraulischer Ladekran

PK 23500



PALFINGER CRANE

Serial number,
Krannummer:

100114176

DB-839

GB

Version: 01/06

GB D

Palfinger - Europe

A 5101 Bergheim-Salzburg/Austria
Franz - W. - Scherer Straße 24
www.palfinger.com

Contents

Specifications

Lifting capacity diagrams

Weights and centers of gravity

Hydraulic diagrams

Rope winch

Max. Hubmoment:

Lifting moment:

Couple de levage:

226.0 kNm (23.0 mt)
(166630 ft.lbs)

Max. Hubkraft:

Max. lifting capacity:

Capacité maxi de levage:

10000 kg
(22046 lbs)

Max. hydraulische Reichweite:

Max. hydraulic outreach:

Portée hydraulique maximale:

16.7 m
(54' 9")

Max. Reichweite mit 2. Knicksystem:

Max. outreach + Fly-Jib:

Portée maximale + Fly-Jib:

25.1 m
(82' 4")

Schwenkbereich:

Slewing angle:

Angle de rotation:

400°

Schwenkmoment:

Slewing torque:

Couple de rotation:

27.0 kNm (2.8 mt)
(19910 ft.lbs)

Max. Betriebsdruck:

Operating pressure:

Pression d'utilisation:

30 MPa (300 bar)
(4350 psi)

Fördermenge der Rümpe:

Pump capacity:

Debit de pompe:

50–75 l/min
(11.0–16.5 imp.gal./min, 13.2–19.8 US gal./min)

Fördermenge der Pumpen bei RC,LS-Betrieb:

Pump capacity by RC,LS-type:

Debit de pompe avec RC,LS-type:

65–80 l/min
(14.3–17.6 imp.gal./min, 17.2–21.1 US gal./min)

Hydr. Ausschübe:

Hydr. boom extensions:

Extensions hydrauliques:

	2(A)	3(B)	4(C)	5(D)	6(E)
Max. Reichweite: Max. outreach: Max. portée:	8.2 m (26' 11")	10.3 m (33' 10")	12.4 m (40' 8")	14.5 m (47' 7")	16.7 m (54' 9")
+V 1		12.5 m (41' 0")	14.6 m (47' 11")	16.7 m (54' 9")	18.7 m (61' 4")
+V 2		14.7 m (48' 3")	16.8 m (55' 1")	18.7 m (61' 4")	
+V 3		16.9 m (55' 5")	18.8 m (61' 8")		

Alle Gewichtsangaben ohne Aufbauzubehör, Zusatzgeräte und Öl.

All weights given without assembly accessory, additional devices and oil.

Tous les poids sans huile ni accessoire de montage ni appareils accessoires

Krangewicht (R1,STZS): Crane weight (R1,STZS): Poids grue (R1,STZS):	2346 kg (5172 lbs)	2506 kg (5525 lbs)	2646 kg (5833 lbs)	2782 kg (6133 lbs)	2895 kg (6382 lbs)
+2/4	2412 kg (5317 lbs)	2591 kg (5712 lbs)	2750 kg (6063 lbs)	2905 kg (6404 lbs)	3037 kg (6695 lbs)
+V 1		2591 kg (5712 lbs)	2711 kg (5977 lbs)	2830 kg (6239 lbs)	2930 kg (6459 lbs)
+V 2		2656 kg (5855 lbs)	2759 kg (6082 lbs)	2865 kg (6316 lbs)	
+V 3		2704 kg (5961 lbs)	2794 kg (6160 lbs)		

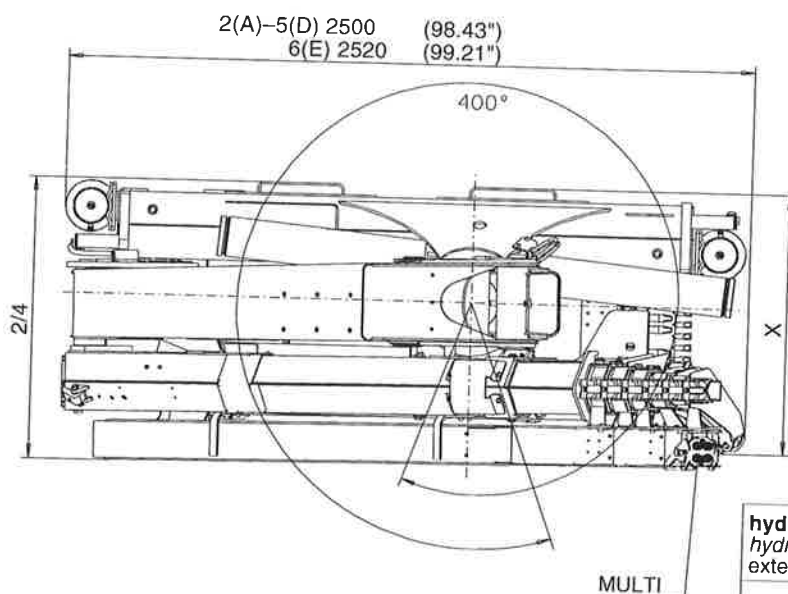
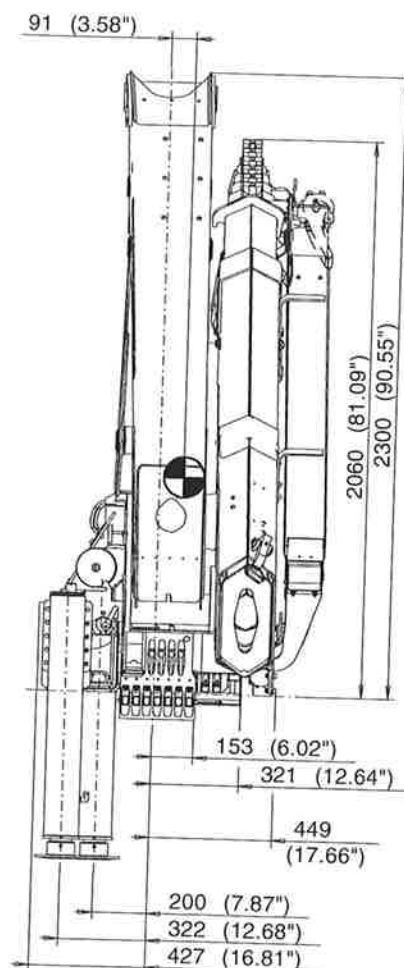
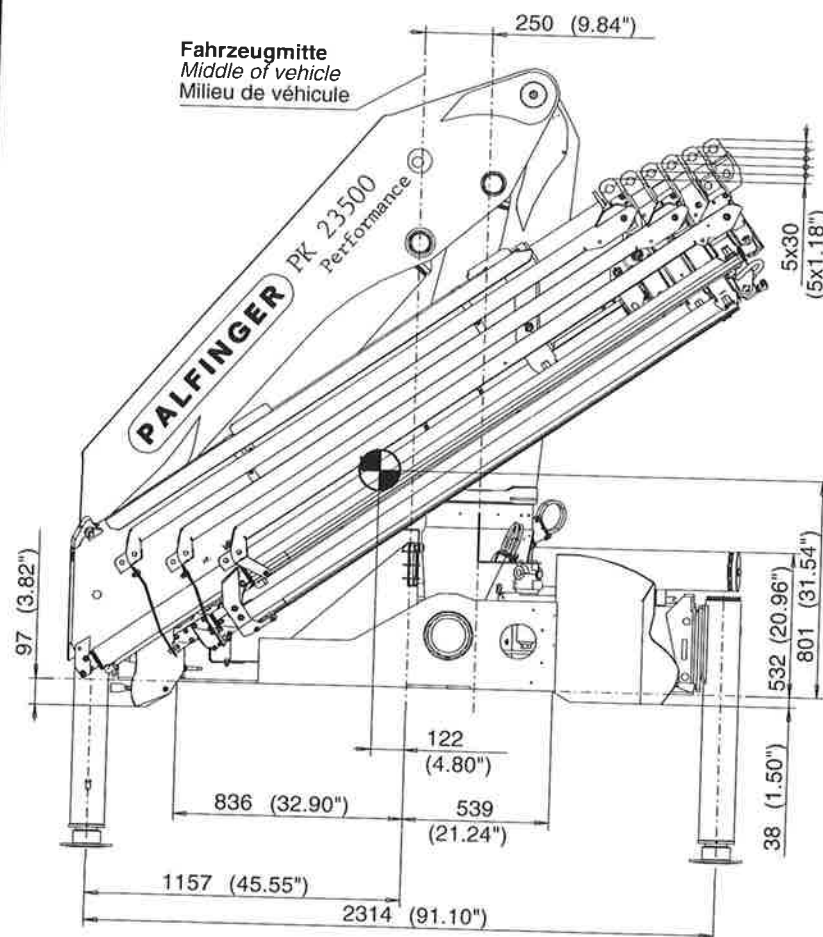
Gewicht +V ohne 2/4

Weight +V without 2/4

Poids +V sans 2/4

	Hochsitz (H) Top seat (H) Siege haute (H)	Hochstand (I) High stand control (I) Poste de commande debout (I)
Gewicht Weight Poids	75 kg (165 lbs)	65 kg (143 lbs)

Konstruktionsänderungen vorbehalten. fertigungstechn. Toleranzen müssen berücksichtigt werden.
Subject to change, production tolerances have to be taken into account
Sous réserve de modifications de conception. Les tolérances relatives à la technique de production doivent être prises en considération.



hydraulische Ausschübe
hydraulic extensions
extensions hydrauliques

	X	2/4
2(A) – 3(B)	875 mm (34.45")	1040 mm (40.94")
4(C)	935 mm (36.81")	
5(D)	975 mm (38.39")	
6(E)	995 mm (39.17")	

PALFINGER

Modell Model Type
PK 23500

Transportstellung – H *Transport position – H* Position de transport – H

DTS406SGA/03

Kapitel Chapter Chapitre

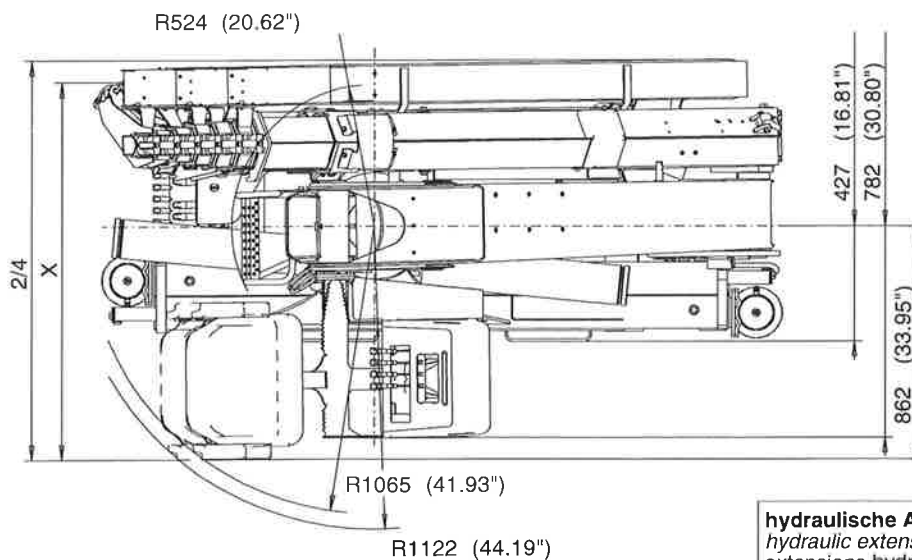
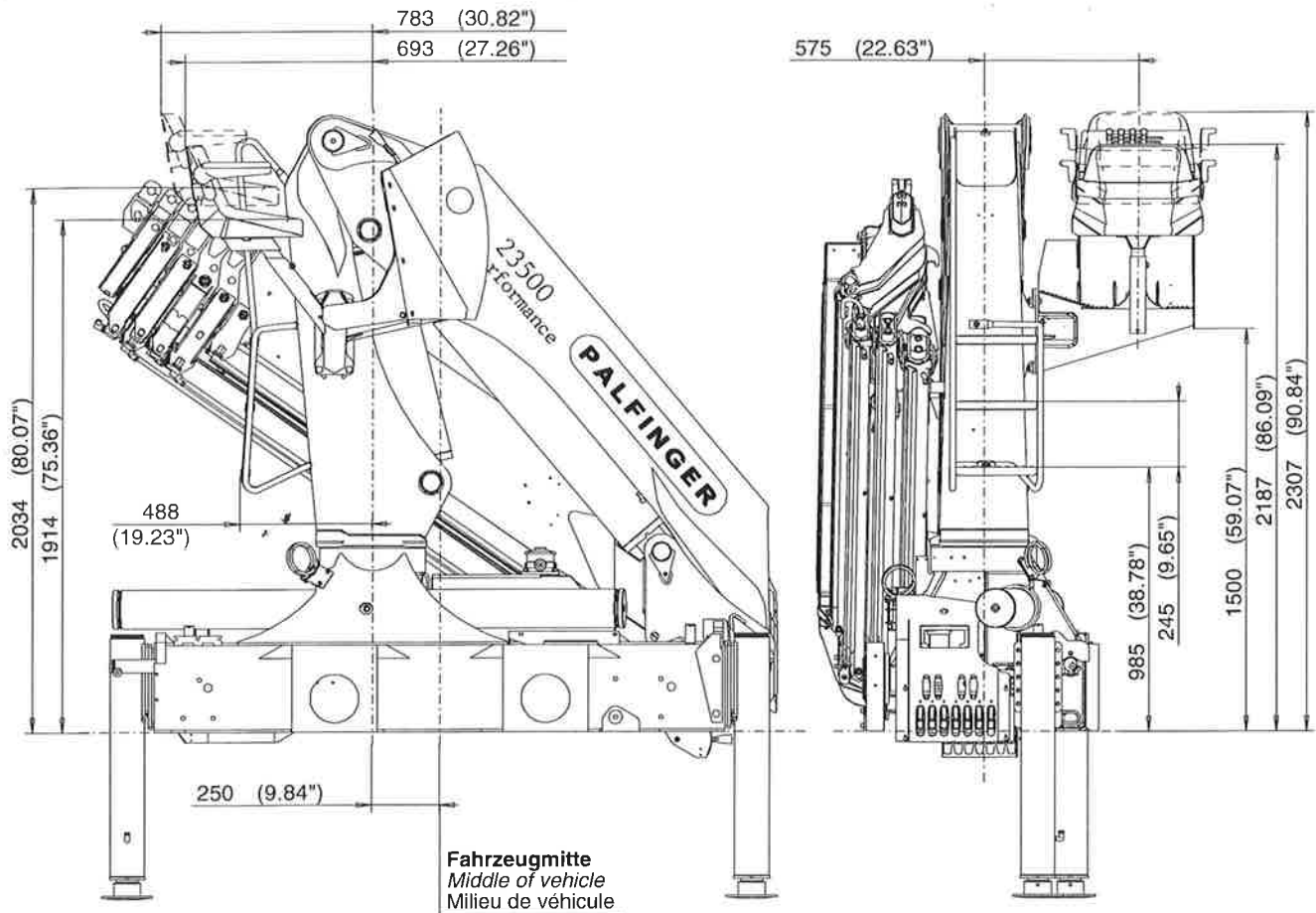
0300

Seite Page Page

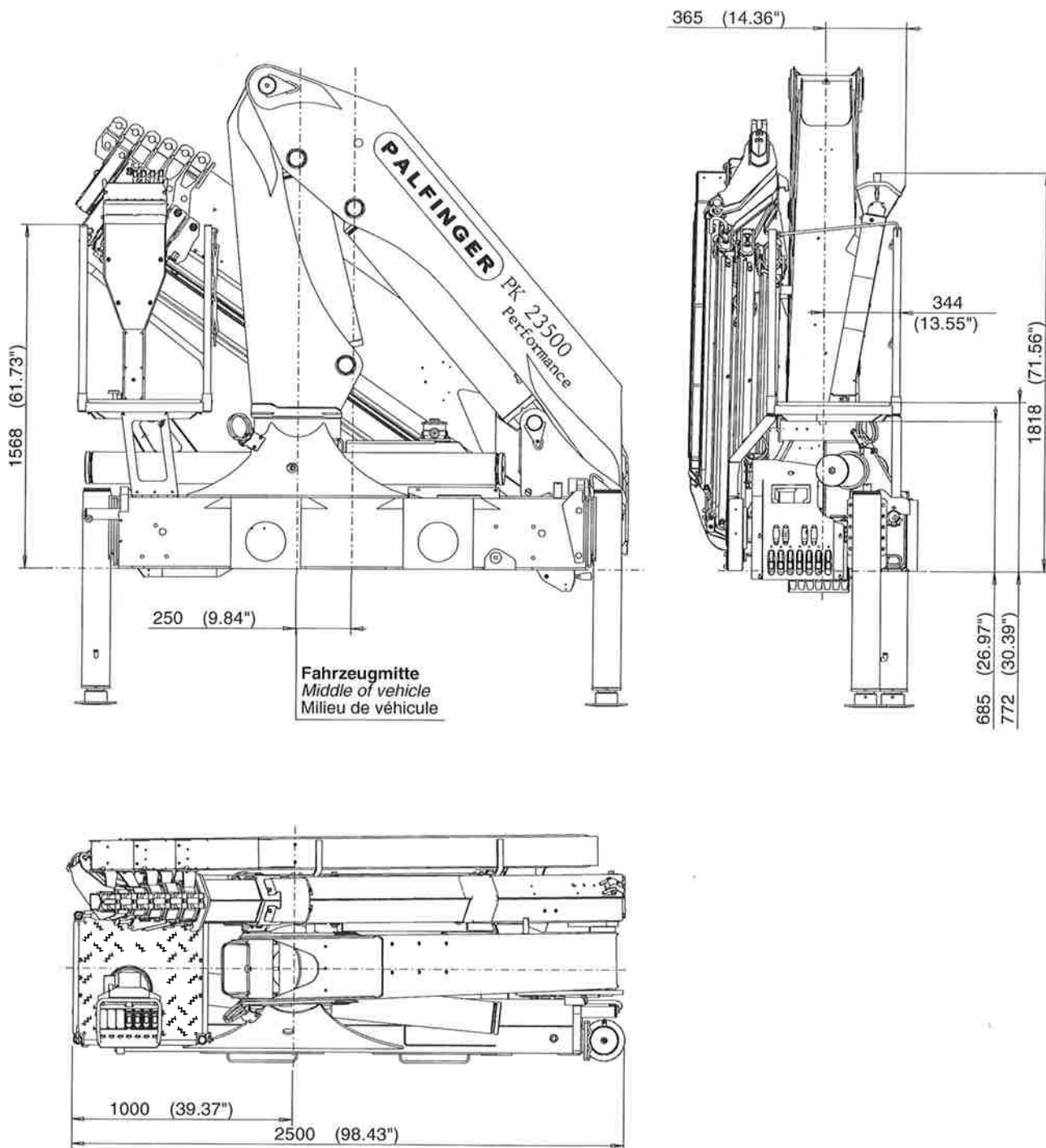
09/2004

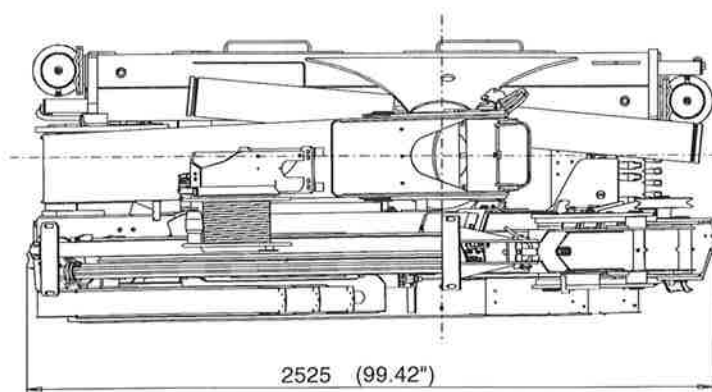
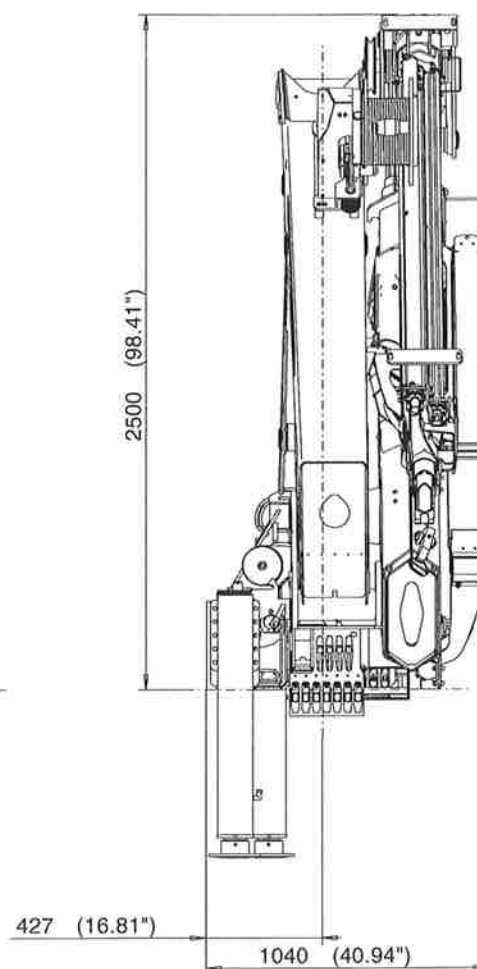
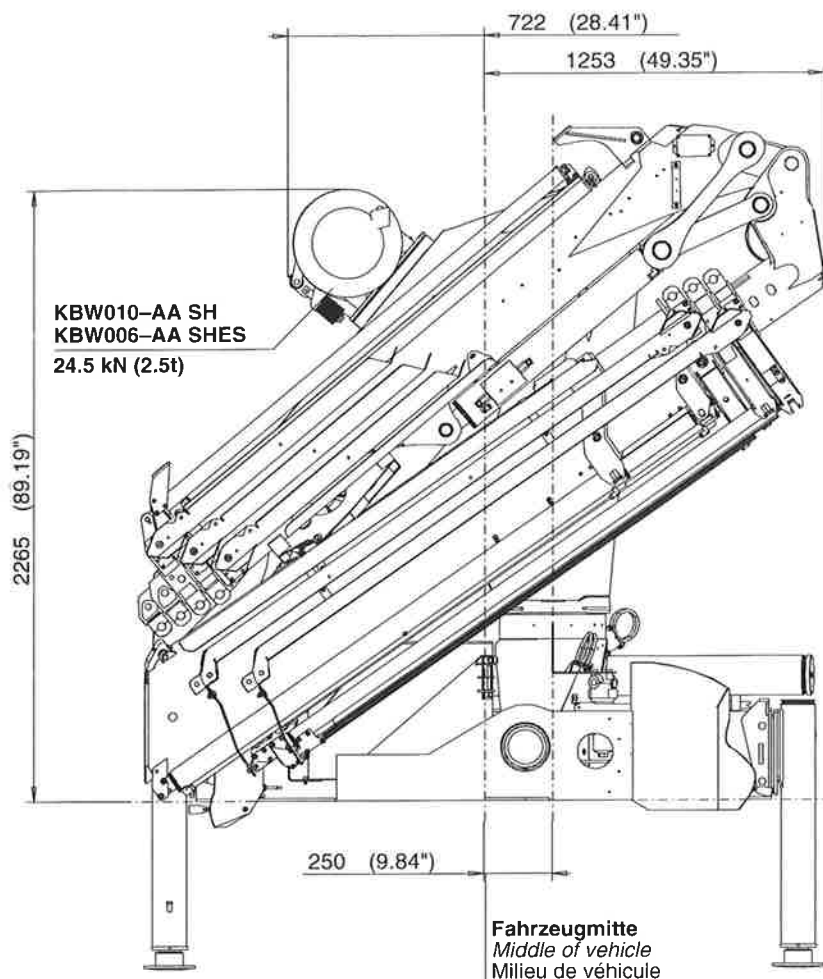
Ausgabe Edition Edition

Konstruktionsänderungen vorbehalten, fertigungstechn. Toleranzen müssen berücksichtigt werden.
 Subject to change, production tolerances have to be taken into account.
 Sous réserve de modifications de conception. Les tolérances relatives à la technique de production doivent être prises en considération.



hydraulische Ausschübe hydraulic extensions extensions hydrauliques	X	2/4
2(A) – 3(B)	1310 mm (51.57")	1480 mm (58.27")
4(C)	1370 mm (53.94")	
5(D)	1410 mm (55.51")	
6(E)	1430 mm (56.30")	

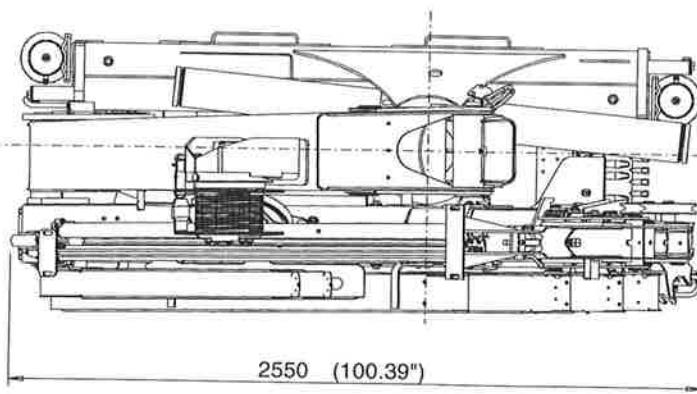
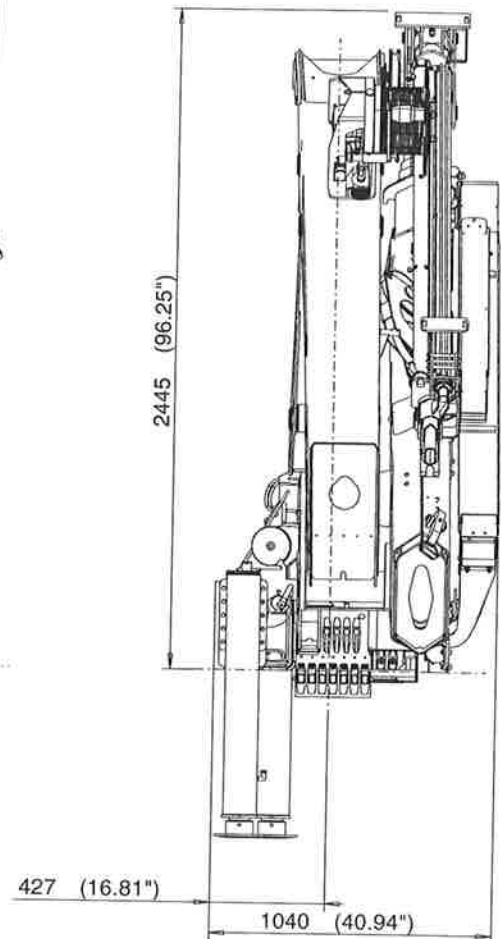
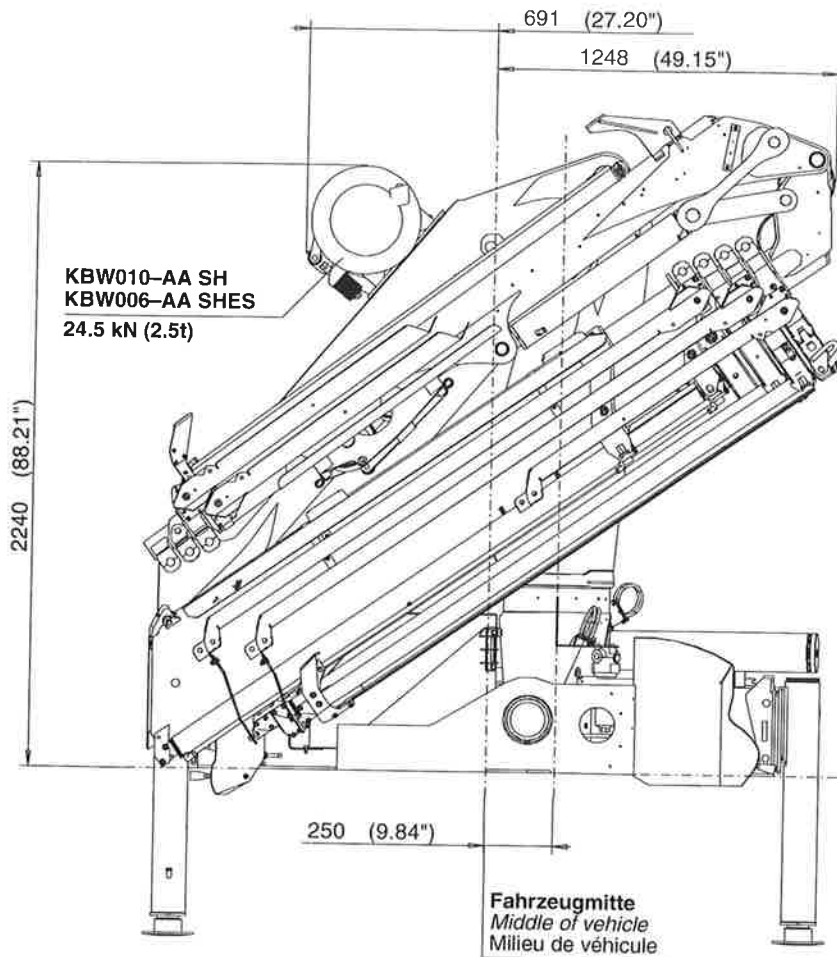




Seilwindengewicht siehe Technische Informationsblätter 08 – Seilwindenaufbau
Cable weight see technical informations 08 – Cable winch assembly
Poids treuile a cable voire le feuille information techniques 08 – Montage du treuil a cable

Konstruktionsänderungen vorbehalten, fertigungstechn. Toleranzen müssen berücksichtigt werden.
Subject to change, production tolerances have to be taken into account.
Sous reserve de modifications de conception. Les tolerances relatives a la technique de production doivent être prises en consideration.

Modell Model Modèle	Gewicht Weight Poids
PK 23500C PJ060A	3171 kg (6991 lbs)
PK 23500C PJ060V1A	3213 kg (7083 lbs)
PK 23500C PJ060V2A	3248 kg (7160 lbs)
+2/4 PJ060A	48 kg (106 lbs)
PK 23500C PJ060B	3235 kg (7132 lbs)
PK 23500C PJ060V1B	3270 kg (7209 lbs)
PK 23500C PJ060V2B	3297 kg (7269 lbs)
+2/4 PJ060B	53 kg (117 lbs)

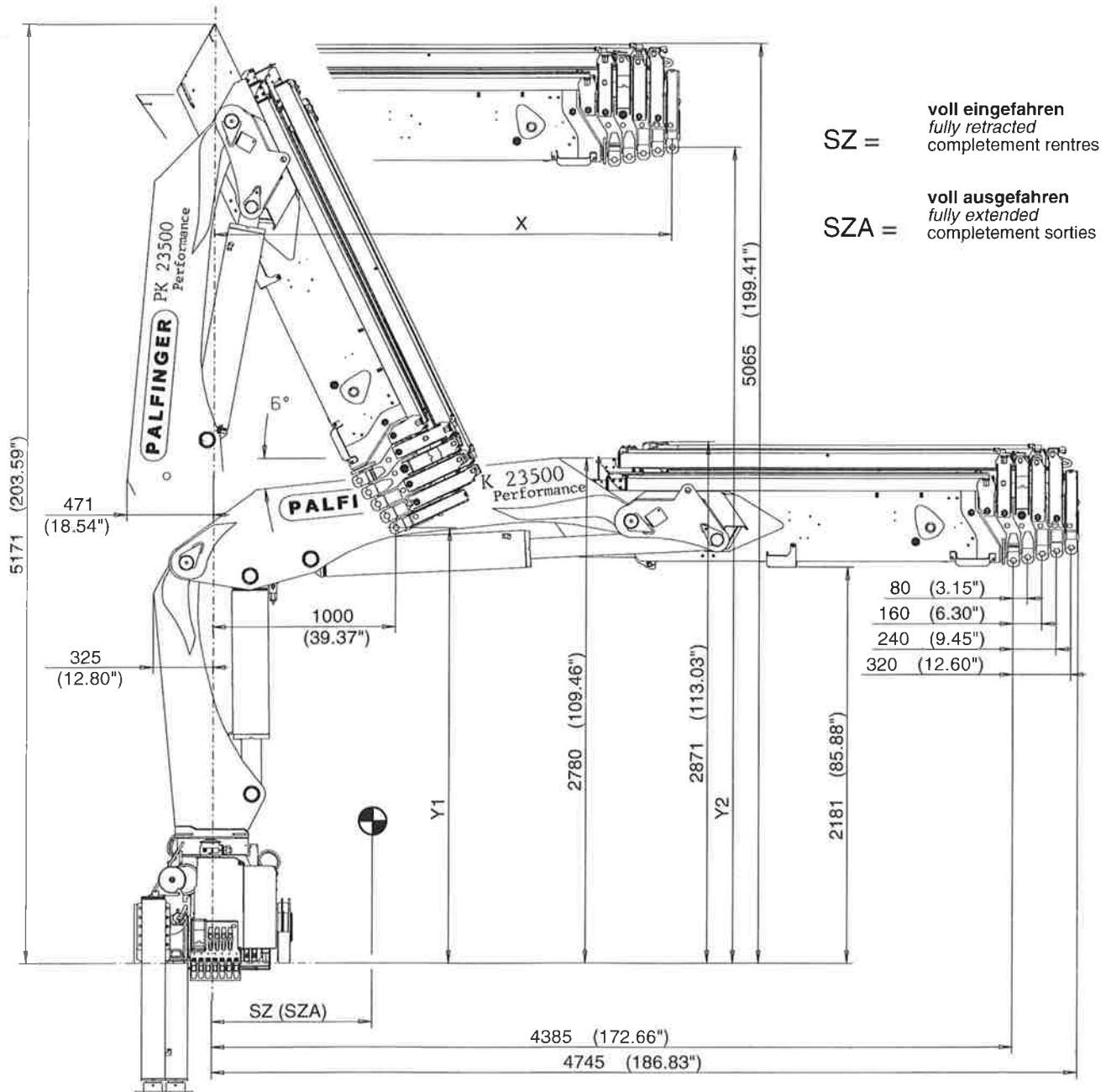


Seilwindengewicht siehe Technische Informationsblätter 08 – Seilwindenaufbau
Cable weight see technical informations 08 – Cable winch assembly
Poids treuille a cable voire le feuille information techniques 08 – Montage du treuil a cable

Konstruktionsänderungen vorbehalten, fertigungstechn. Toleranzen müssen berücksichtigt werden.
Subject to change, production tolerances have to be taken into account.
Sous reserve de modifications de conception. Les tolerances relatives a la technique de production doivent etre prises en consideration

Modell Model Modèle	Gewicht Weight Poids
PK 23500D PJ040A	3203 kg (7061 lbs)
PK 23500D PJ040V1A	3230 kg (7121 lbs)
PK 23500D PJ040V2A	3248 kg (7160 lbs)
+2/4 PJ040A	48 kg (106 lbs)

Konstruktionsänderungen vorbehalten, fertigungstechn. Toleranzen müssen berücksichtigt werden.
Subject to change, production tolerances have to be taken into account.
Sous réserve de modifications de conception. Les tolérances relatives à la technique de production doivent être prises en considération.



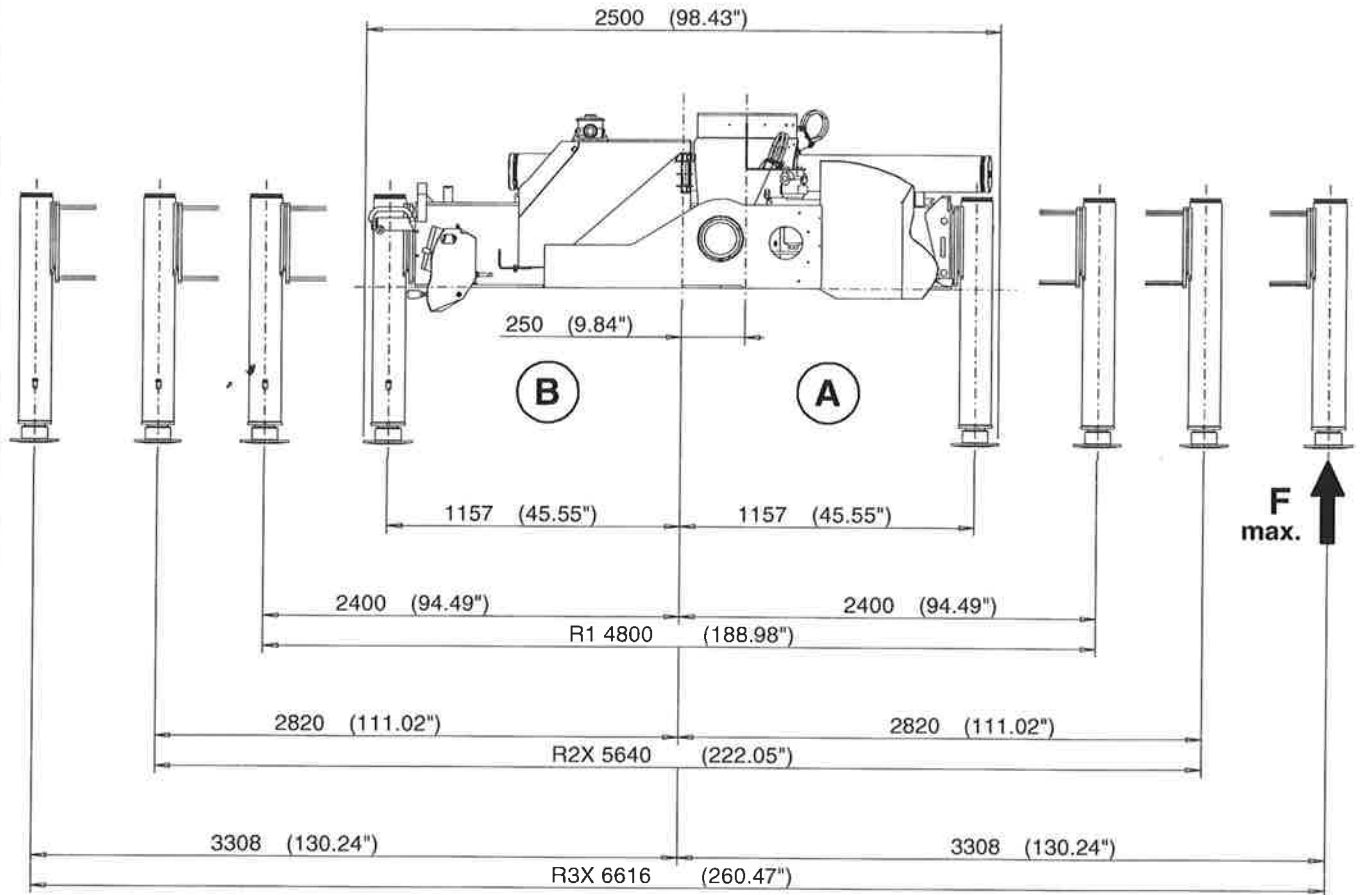
hydraulische Ausschübe
hydraulic extensions
extensions hydrauliques

	2(A)	3(B)	4(C)	5(D)	6(E)
X	2186 mm (86.06")	2266 mm (89.21")	2346 mm (92.36")	2426 mm (95.51")	2506 mm (98.66")
Y1	2739 mm (107.84")	2652 mm (104.41")	2566 mm (101.02")	2481 mm (97.68")	2396 mm (94.33")
Y2	4424 mm (174.17")	4442 mm (174.88")	4559 mm (179.49")	4477 mm (176.26")	4494 mm (176.93")
SZ	877 mm (34.53")	1033 mm (40.67")	1158 mm (45.59")	1272 mm (50.08")	1360 mm (53.54")
SZA	1236 mm (48.66")	1714 mm (67.48")	2202 mm (86.69")	2749 mm (108.23")	3224 mm (126.93")

Konstruktionsänderungen vorbehalten, fertigungstechn. Toleranzen müssen berücksichtigt werden.

Subject to change, production tolerances have to be taken into account.

Sous réserve de modifications de conception. Les tolérances relatives à la technique de production doivent être prises en considération.

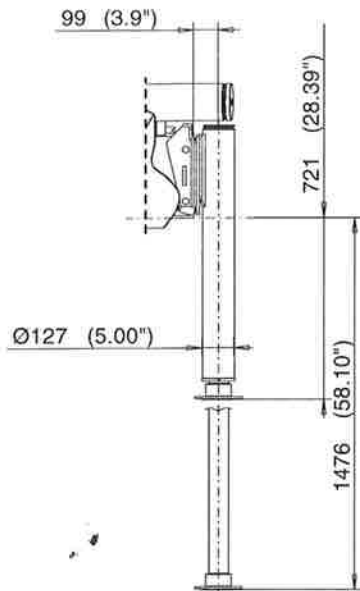


Gewicht: Kransockel, Steuerventil, Abstützung, Öltank

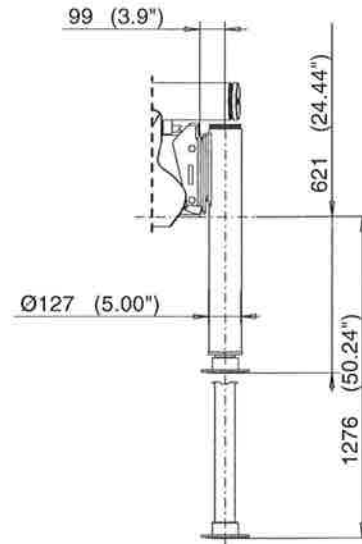
Weight: base, control valve, support, oil tank

Poids: socle, distributeur de commande, support, réservoir à huile

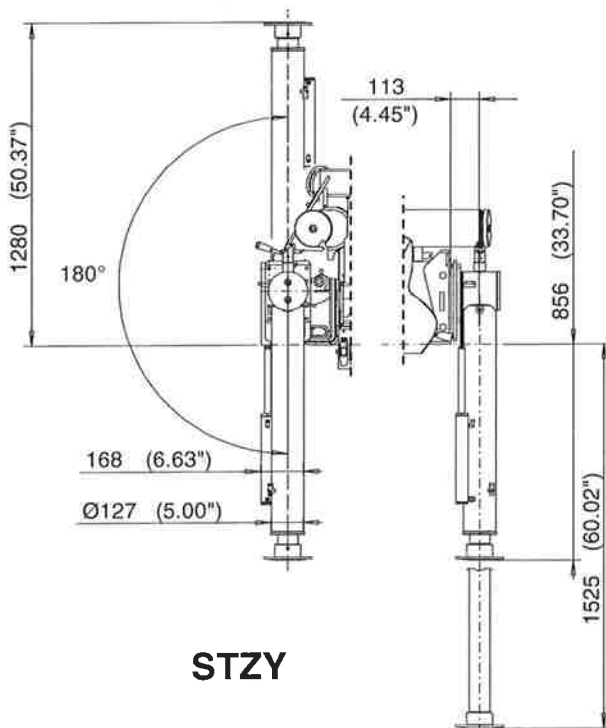
Ausführung: Type: Version:	STZS3	STZY3 STZY	F max. A	F max. B
R1	950 kg (2094 lbs)	970 kg (2138 lbs)	127.5 kN (28650 lbs)	121.1 kN (27210 lbs)
R2X	980 kg (2160 lbs)	1000 kg (2205 lbs)	108.5 kN (24380 lbs)	103.1 kN (23170 lbs)
R3X	1090 kg (2403 lbs)	1100 kg (2425 lbs)	92.5 kN (20790 lbs)	87.9 kN (19750 lbs)



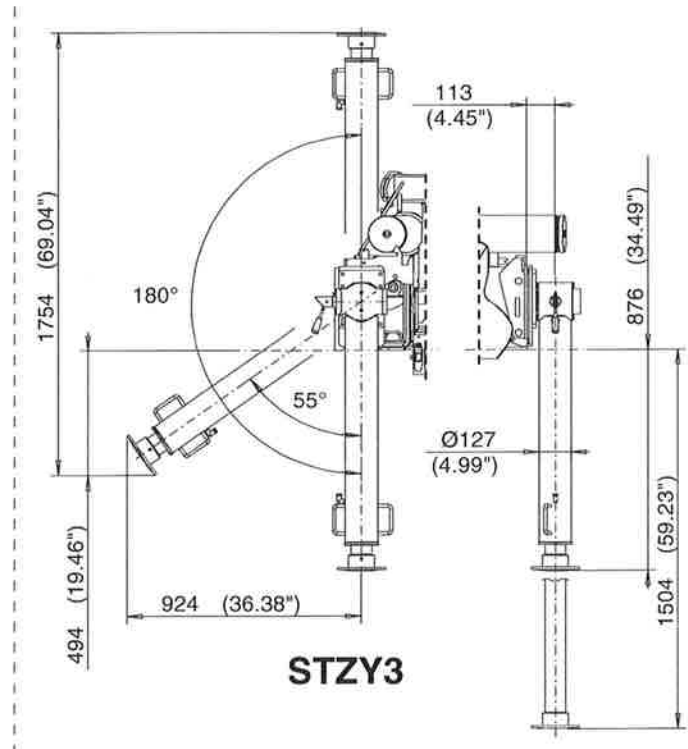
STZS3



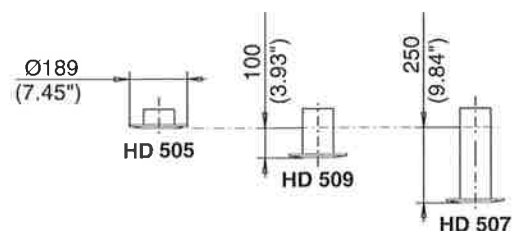
STÜ04



STZY

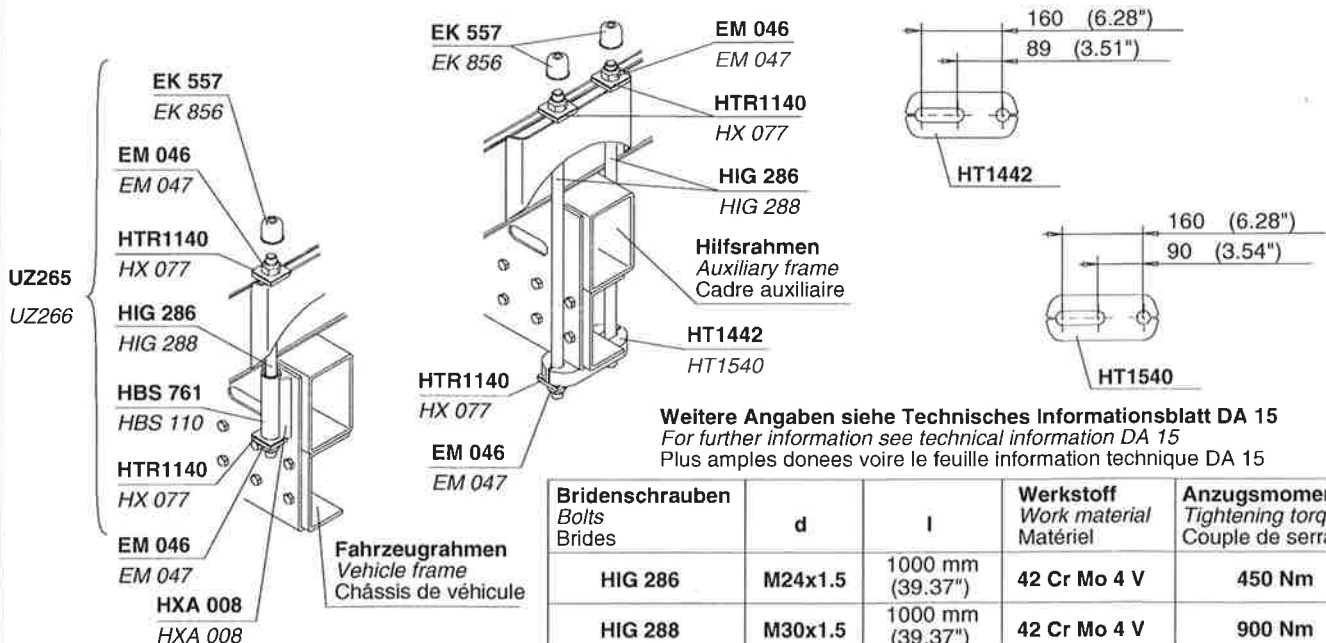
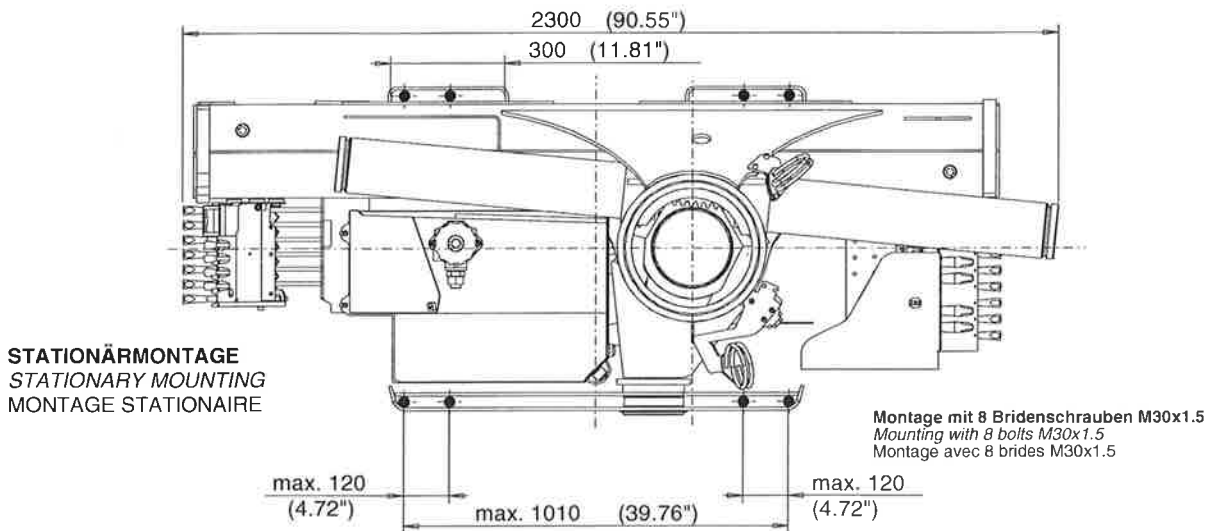
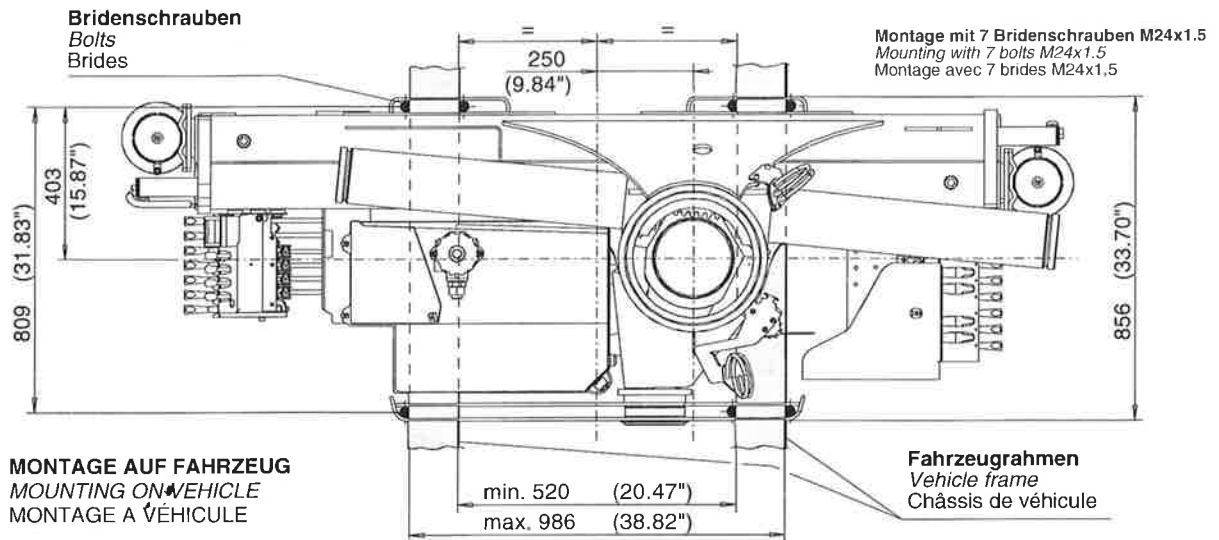


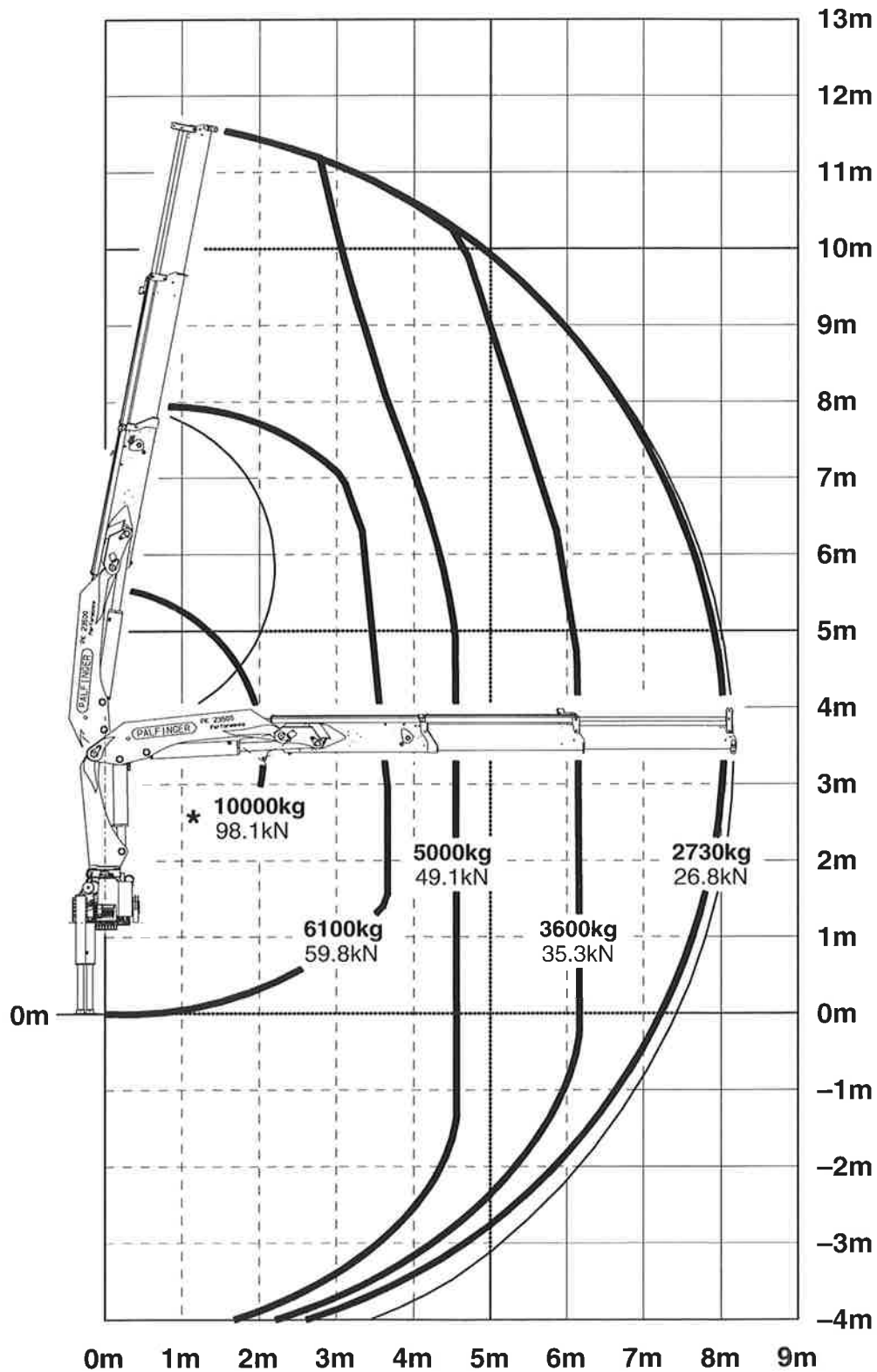
STZY3



STT=Stützsteller-Verlängerung
STT=Stabilizer plates-Extension
STT=Plateau de support-Rallonge

Konstruktionsänderungen vorbehalten, fertigungstechn. Toleranzen müssen berücksichtigt werden.
Subject to change, production tolerances have to be taken into account.
Sous réserve de modifications de conception Les tolérances relatives à la technique de production doivent être prises en considération

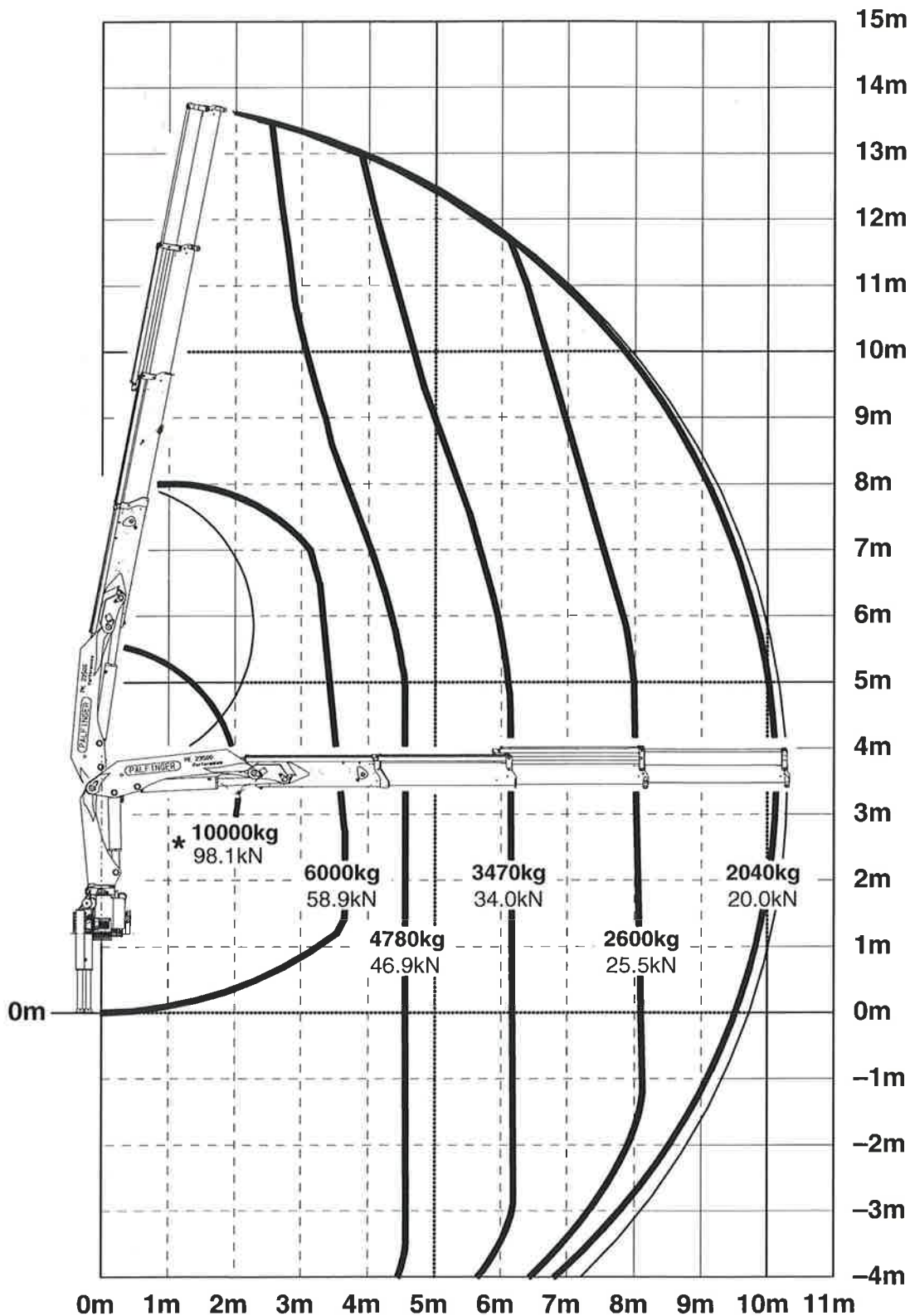




Schwerlastgehänge
 ★ Heavy load attachment
 La suspension de charge lourde

Konstruktionsänderungen vorbehalten, fertigungstechn. Toleranzen müssen berücksichtigt werden.
 Subject to change, production tolerances have to be taken into account.
 Sous réserve de modifications de conception. Les tolérances relatives à la technique de production doivent être prises en considération.

Einstufung: H1/B3 nach EN12999
 Classification: H1/B3 in EN12999
 Classement: H1/B3 en mesure EN12999

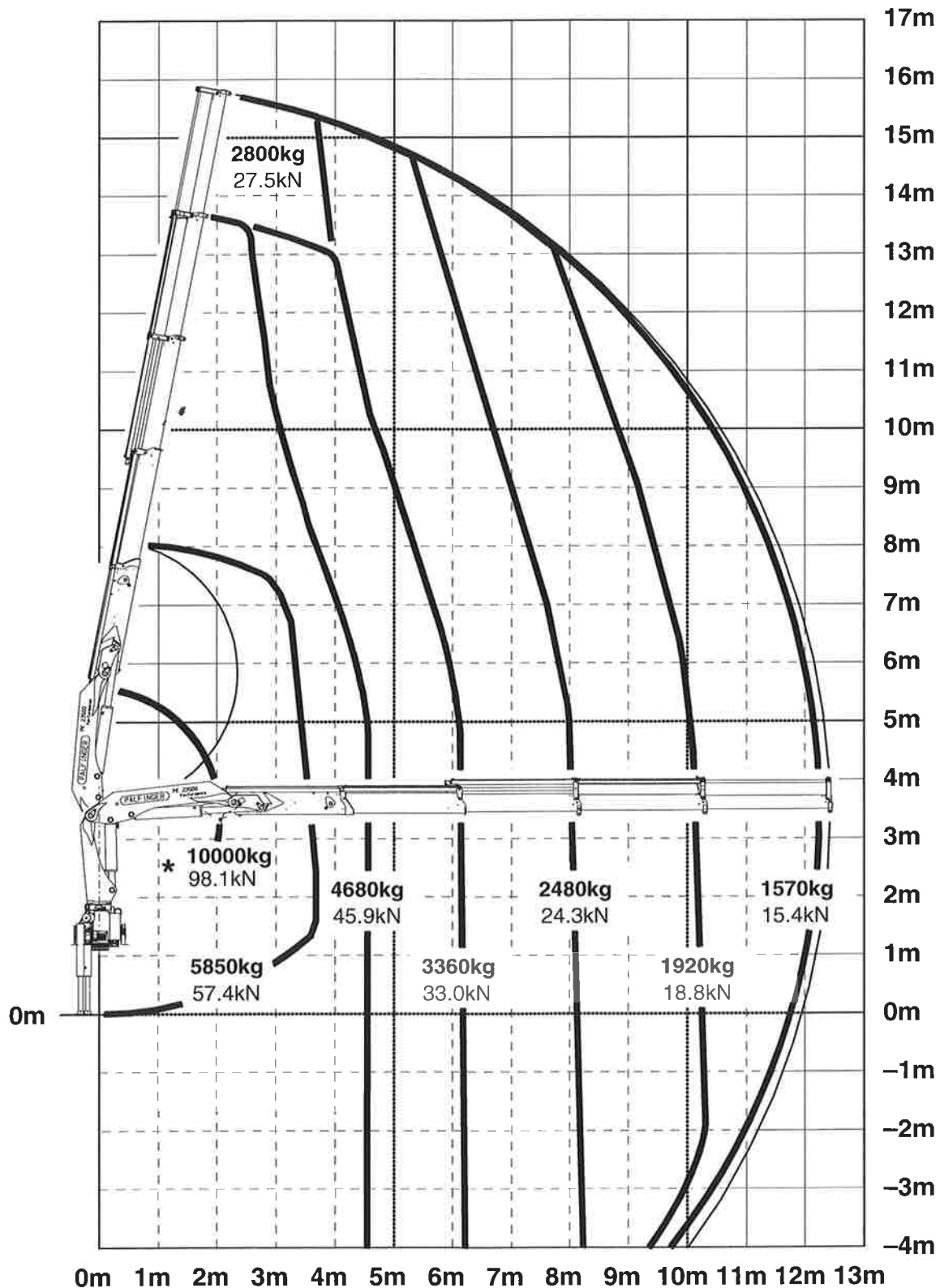


Schwerlastgehänge

- ★ Heavy load attachment
- La suspension de charge lourde

Konstruktionsänderungen vorbehalten, fertigungstechn. Toleranzen müssen berücksichtigt werden.
Subject to change, production tolerances have to be taken into account.
Sous réserve de modifications de conception. Les tolérances relatives à la technique de production doivent être prises en considération.

Einstufung: H1/B3 nach EN12999
Classification: H1/B3 in EN12999
Classement: H1/B3 en mesure EN12999



Schwerlastgehänge

* Heavy load attachment

La suspension de charge lourde

Konstruktionsänderungen vorbehalten, fertigungstechn. Toleranzen müssen berücksichtigt werden.

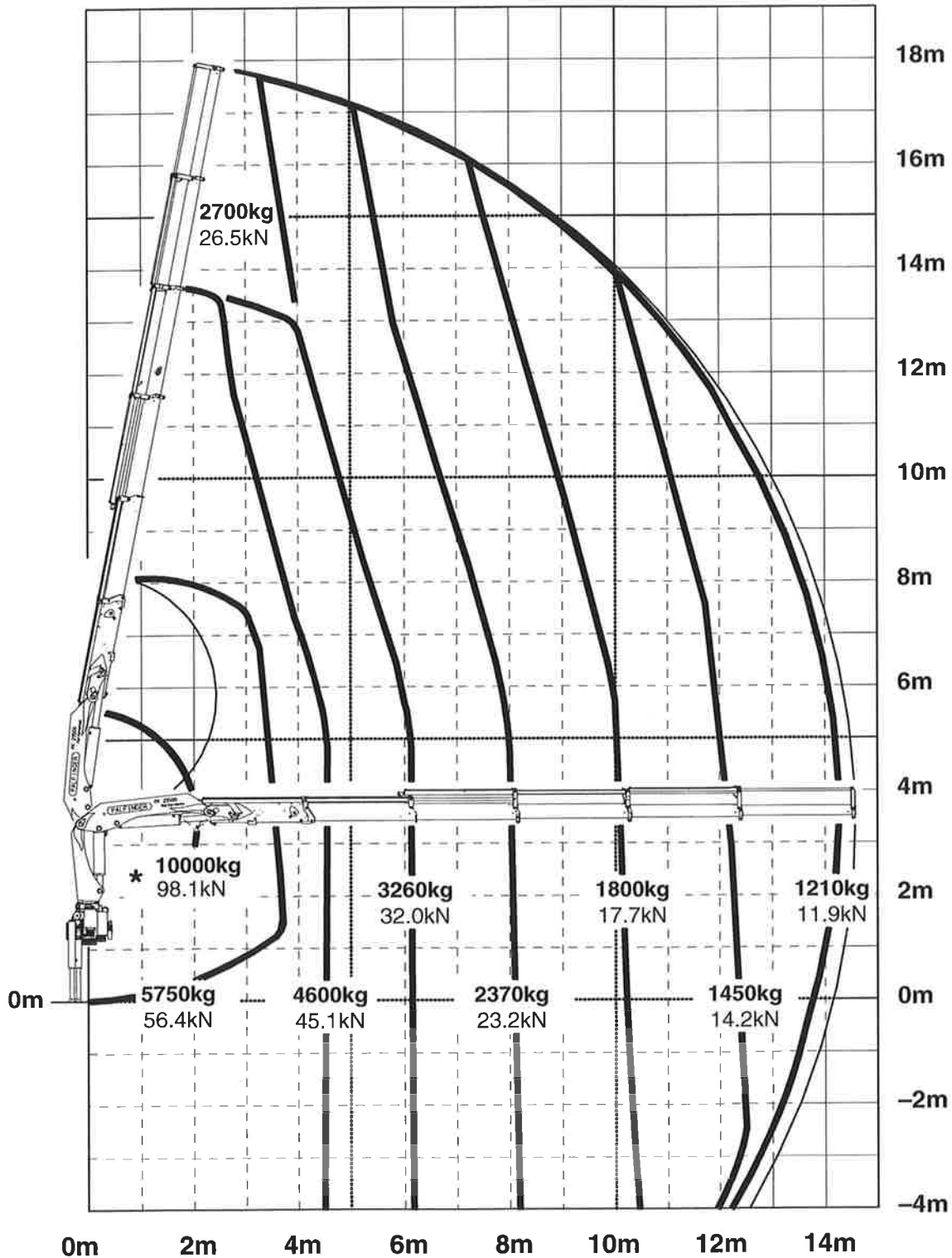
Subject to change, production tolerances have to be taken into account.

Sous réserve de modifications de conception. Les tolérances relatives à la technique de production doivent être prises en considération

Einstufung: H1/B3 nach EN12999

Classification: H1/B3 in EN12999

Classement: H1/B3 en mesure EN12999

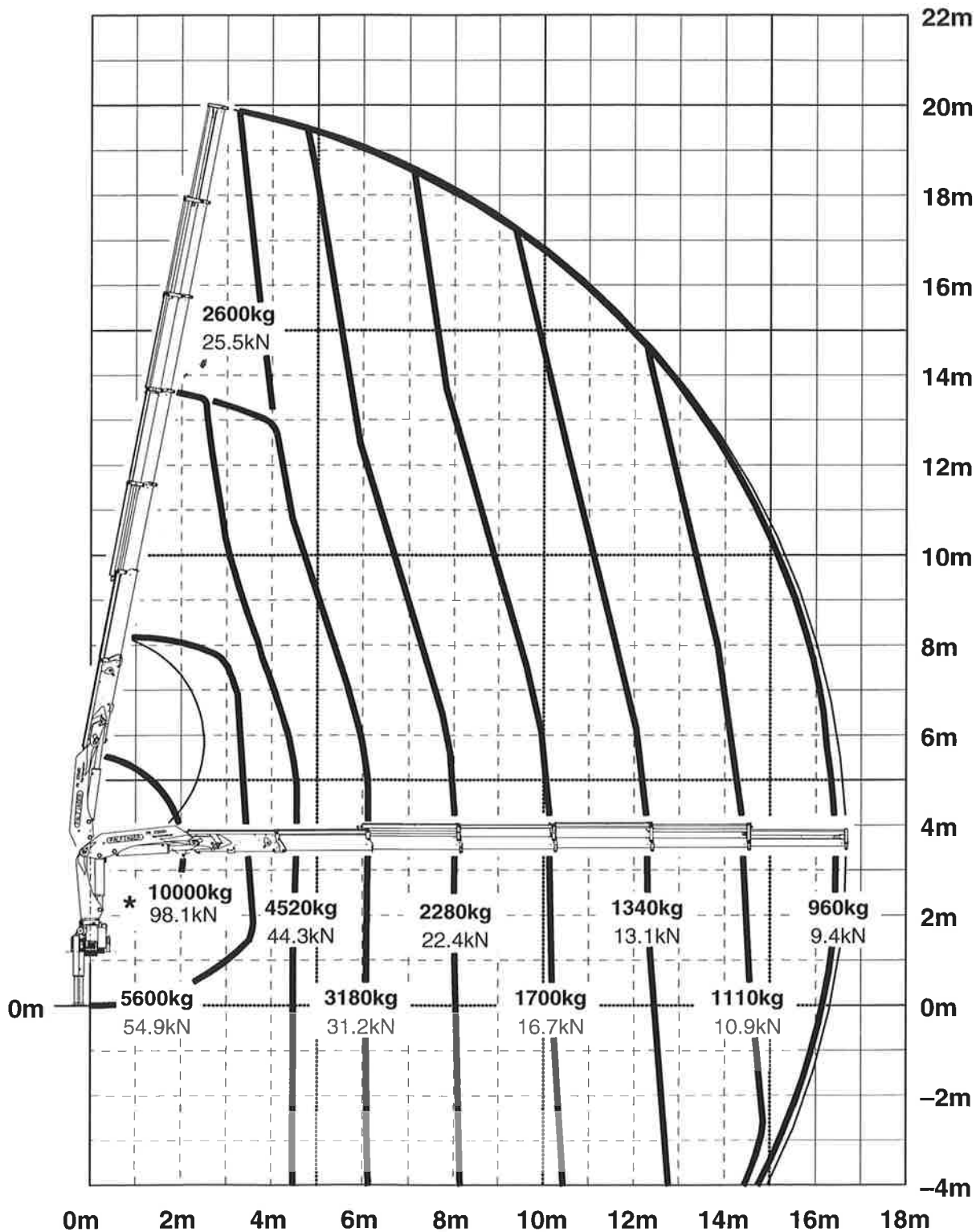


Schwerlastgehänge

* Heavy load attachment
La suspension de charge lourde

Konstruktionsänderungen vorbehalten, fertigungstechn. Toleranzen müssen berücksichtigt werden.
Subject to change, production tolerances have to be taken into account.
Sous réserve de modifications de conception. Les tolérances relatives à la technique de production doivent être prises en considération.

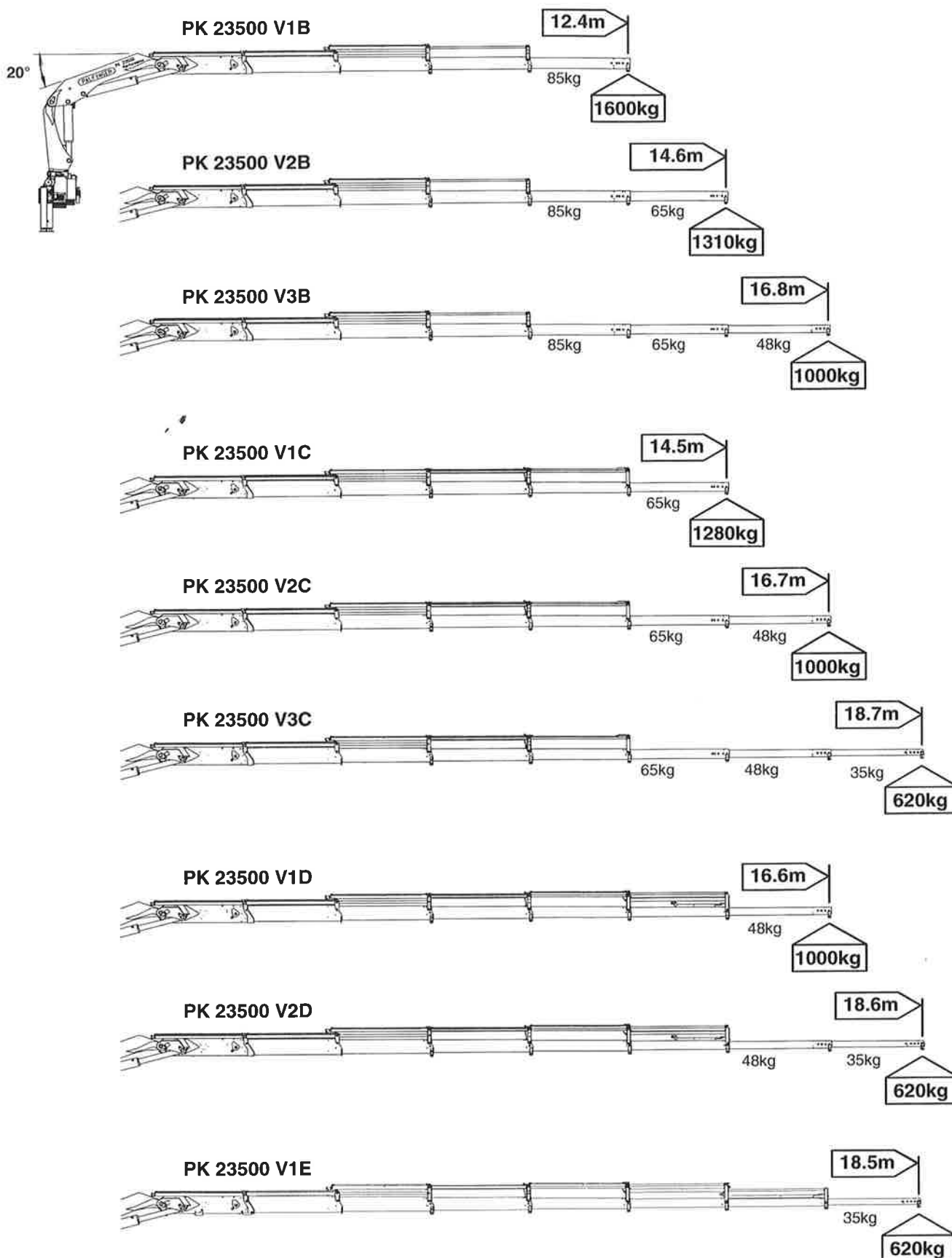
Einstufung: H1/B3 nach EN12999
Classification: H1/B3 in EN12999
Classement: H1/B3 en mesure EN12999



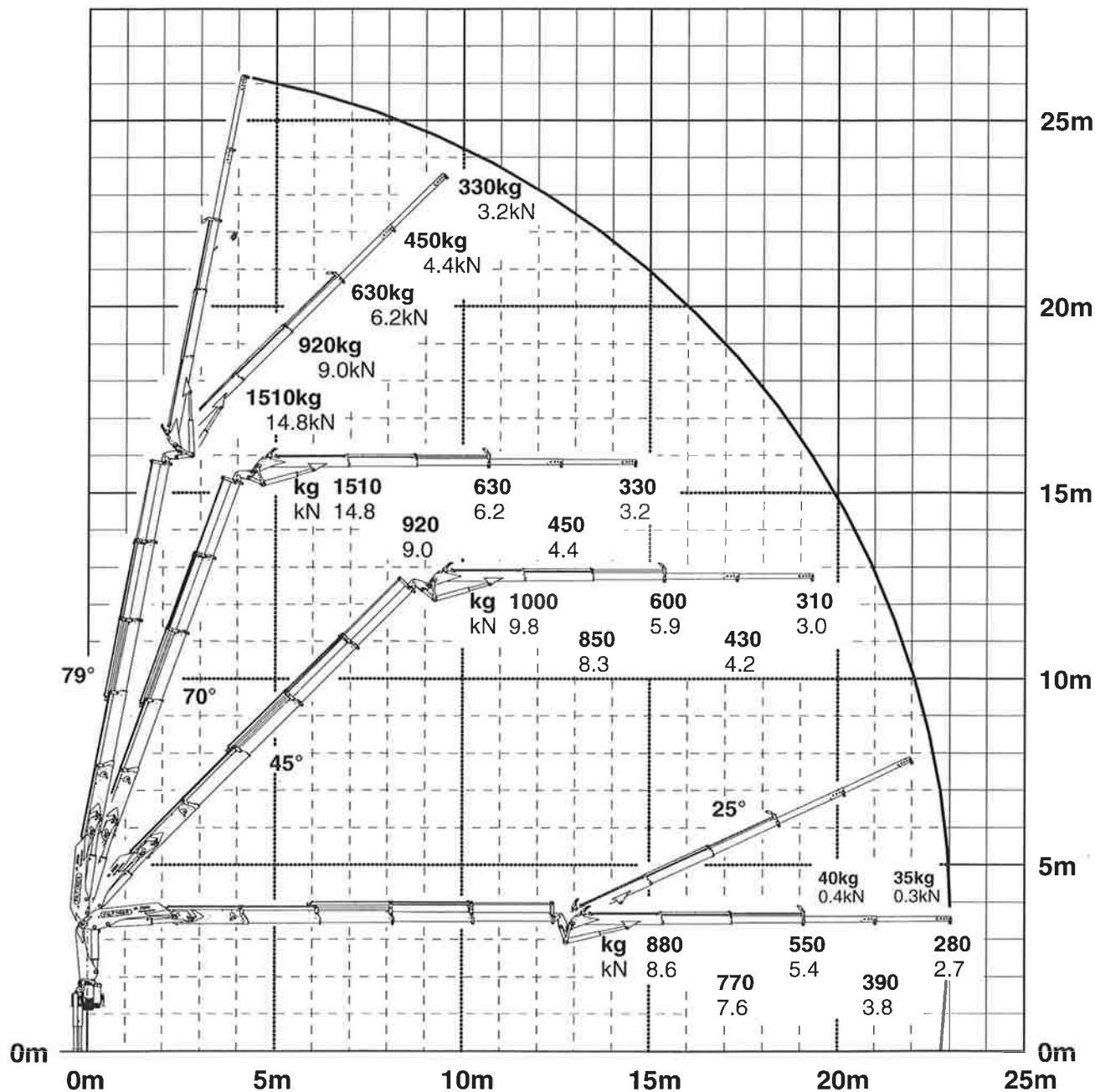
Schwerlastgehänge
 * Heavy load attachment
 La suspension de charge lourde

Konstruktionsänderungen vorbehalten, fertigungstechn. Toleranzen müssen berücksichtigt werden.
 Subject to change, production tolerances have to be taken into account.
 Sous réserve de modifications de conception. Les tolérances relatives à la technique de production doivent être prises en considération.

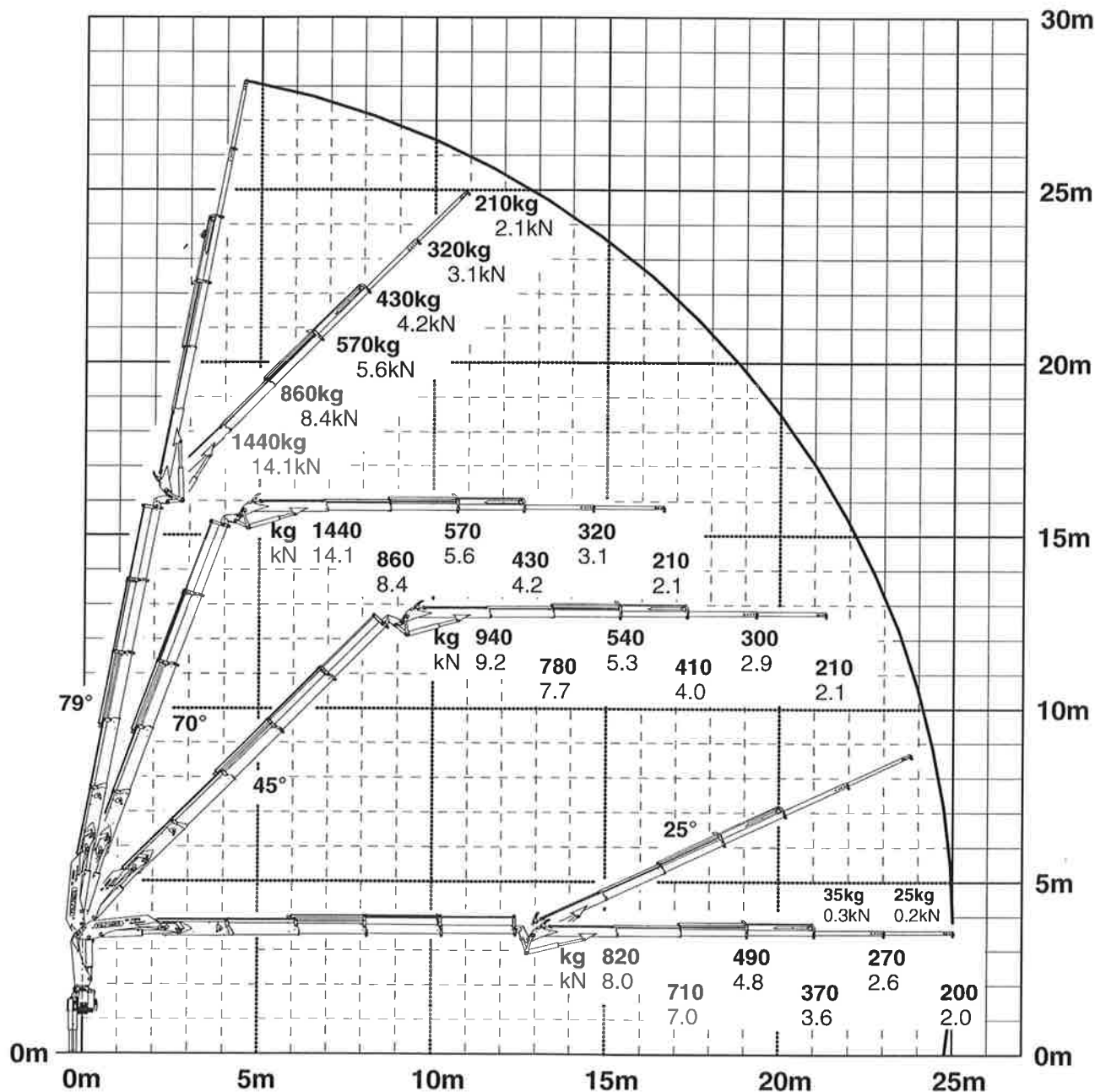
Einstufung: H1/B3 nach EN12999
 Classification: H1/B3 in EN12999
 Classement: H1/B3 en mesure EN12999



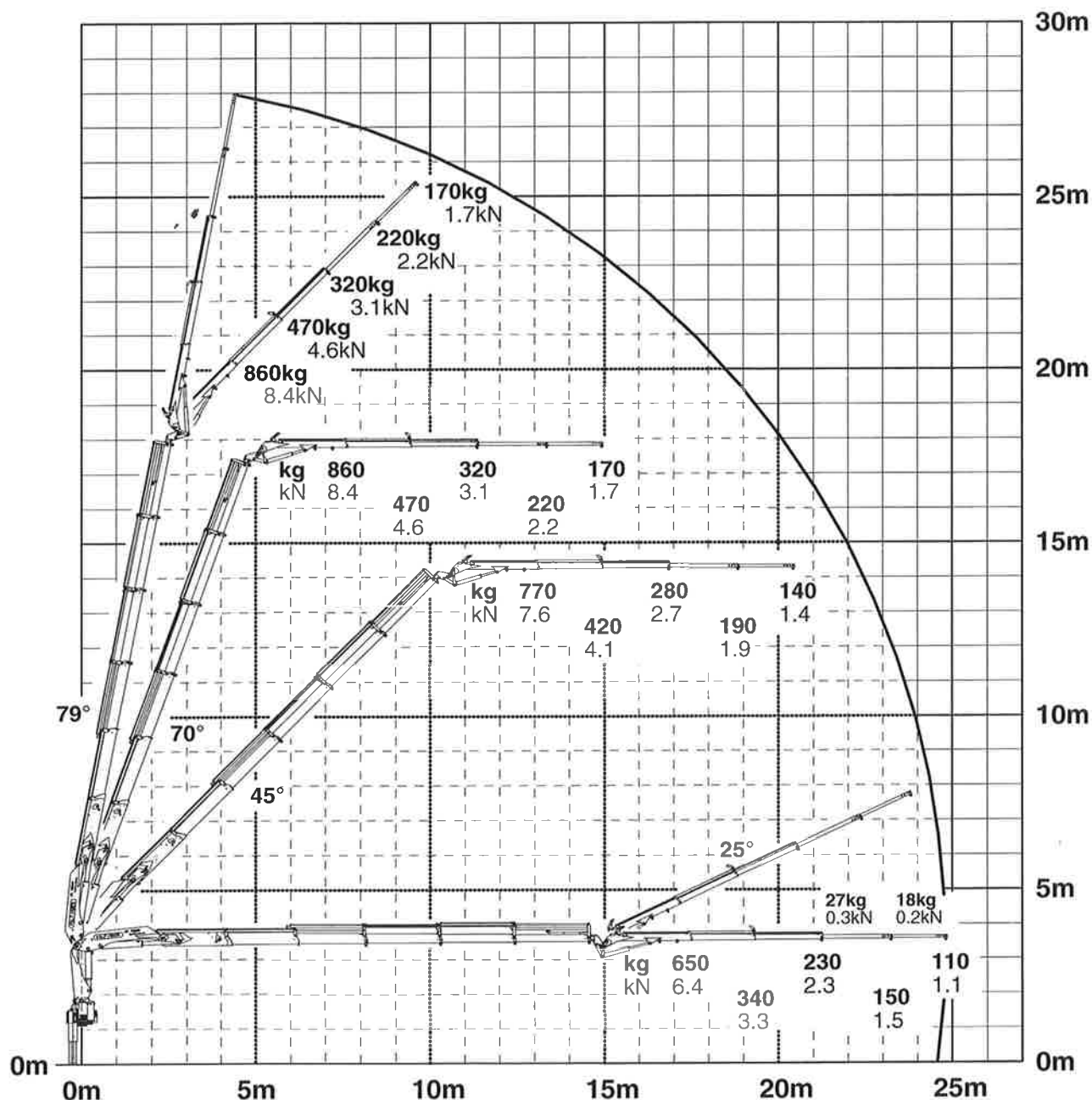
Die Tragkräfte laut Diagramm verringern sich bei Verwendung von mechanischen Verlängerungen um deren Eigengewicht.
When using mechanical boom extensions, the loads, shown on the charts need to be reduced by the weight of these extensions.
Les charges admissibles du diagramme ci-après se réduisent du poids de la rallonge manuelle utilisée.





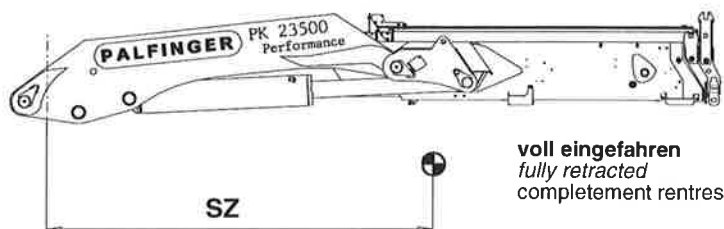
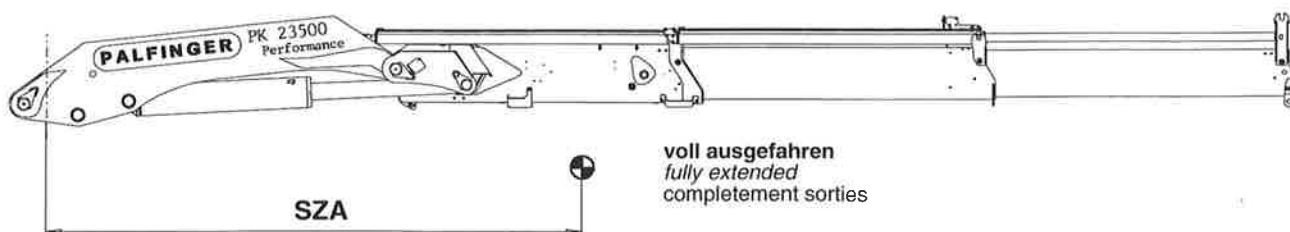
Die Tragkräfte laut Diagramm verringern sich bei Verwendung von mechanischen Verlängerungen um deren Eigengewicht.
When using mechanical boom extensions, the loads, shown on the charts need to be reduced by the weight of these extensions.
Les charges admissibles du diagramme ci-après se réduisent du poids de la rallonge manuelle utilisée.



Die Tragkräfte laut Diagramm verringern sich bei Verwendung von mechanischen Verlängerungen um deren Eigengewicht.
When using mechanical boom extensions, the loads, shown on the charts need to be reduced by the weight of these extensions.
Les charges admissibles du diagramme ci-après se réduisent du poids de la rallonge manuelle utilisée.



Modell Model Modèle	Gewicht Armsystem Weight of boom system Poid de bras de charge	SZ 	SZA 
PK 23500 B	1273 kg 12.5kN (2806 lbs)	2183 mm (85.94")	3523 mm (138.70")
+V1B	1358 kg 13.3kN (2994 lbs)	2248 mm (88.50")	4002 mm (157.56")
+V2B	1423 kg 14.0kN (3137 lbs)	2297 mm (90.43")	4204 mm (165.51")
+V3B	1471 kg 14.4kN (3243 lbs)	2333 mm (91.85")	4343 mm (170.98")
PK 23500 C	1413 kg 13.9kN (3115 lbs)	2303 mm (90.67")	4257 mm (167.60")
+V1C	1478 kg 14.5kN (3258 lbs)	2348 mm (92.44")	4654 mm (183.23")
+V2C	1526 kg 15.0kN (3364 lbs)	2381 mm (93.74")	4838 mm (190.47")
+V3C	1561 kg 15.3kN (3441 lbs)	2409 mm (94.84")	4966 mm (195.51")
PK 23500 D	1549 kg 15.2kN (3415 lbs)	2407 mm (94.76")	5060 mm (199.21")
+V1D	1597 kg 15.7kN (3521 lbs)	2436 mm (95.91")	5371 mm (211.46")
+V2D	1632 kg 16.0kN (3598 lbs)	2463 mm (96.97")	5526 mm (217.56")
PK 23500 E	1662 kg 16.3kN (3664 lbs)	2482 mm (97.72")	5729 mm (225.55")
+V1E	1697 kg 16.6kN (3741 lbs)	2506 mm (98.66")	5973 mm (235.16")



Gewicht: Kransockel, Kransäule, Hubzylinder
Weight: base, column, main boom cylinder
Poids: socle, colonne, verin de levage

Ausführung: Type: Version:	STZS3	STZY3 STZY
R1	1233 kg 12.1kN (2718 lbs)	1253 kg 12.3kN (2762 lbs)
R2X	1263 kg 12.4kN (2784 lbs)	1283 kg 12.6kN (2828 lbs)
R3X	1373 kg 13.5kN (3027 lbs)	1393 kg 13.7kN (3071 lbs)

Weitere Angaben siehe Technische Informationsblätter 03


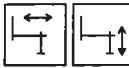



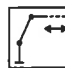






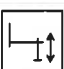

For further information see technical informations 03

Plus amples donnees voir le feuille information techniques 03

Konstruktionsänderungen vorbehalten, fertigungstechn. Toleranzen müssen berücksichtigt werden.

Subject to change, production tolerances have to be taken into account.

Sous reserve de modifications de conception. Les tolerances relatives a la technique de production doivent etre prises en consideration.

	Seite Page Feuille		Seite Page Feuille
Steuerung-FL Control-FL Commande-FL	 0200	Kranabstützung - R2X,R3X Crane support - R2X,R3X Support de grue - R2X,R3X	 0900
Steuerung-H-KL0 Control-H-KL0 Commande-H-KL0	 0300	Schwenken-Hauptarm-Knickarm Swivel-main boom-outer boom Pivoter-bras principal-deuxieme bras	 1000
Steuerung-H-KK§ Control-H-KK§ Commande-H-KK§	 0400	Schubzylinder I(Std.)-VI(E) Boom extension ram I(Std.)-VI(E) Verin d'extension I(Std.)-VI(E)	 1100
Steuerung-RSQ240 RC Control-RSQ240 RC Commande-RSQ240 RC	 0500	Überlastsicherung-OSK-FL-H-KL0 Overload protection-OSK-FL-H-KL0 Soupape de surcharge-OSK-FL-H-KL0	 1200
Steuerung-RC001 Control-RC001 Commande-RC001	 0600	Überlastsicherung-OSK-H-KK1 Overload protection-OSK-H-KK1 Soupape de surcharge-OSK-H-KK1	 1300
Steuerung-RC001 LS Control-RC001 LS Commande-RC001 LS	 0700	Überlastsicherung-OSK-RSQ240 RC Overload protection-OSK-RSQ240 RC Soupape de surcharge-OSK-RSQ240 RC	 1400
Kranabstützung - R1 Crane support - R1 Support de grue - R1	 0800	Zusatzgeräte-2/4 Attachment-2/4 Connexion-2/4	 1500

Gerätebezeichnung
Descripton
Designation d' appareil

1 Öltank Oil tank Réservoir	13 Vorspannventil Pre tension valve Soupape pre tension	26 Schubzylinder IV Boom extension ram IV Verin d'extension IV
2 Hydraulikpumpe Hydraulic pump Pompe hydraulique	14 Abstützzylinder Stabilizer ram Stabilisateur	27 Schubzylinder V Boom extension ram V Verin d'extension V
3 Hochdruckfilter High pressure filter Filtre haute pression	15 Ausfahrzylinder Stabilizer extension ram Verin d' extension-stabilisateur	28 Schubzylinder VI Boom extension ram VI Verin d'extension VI
4 Steuerventil - Kran Control valve - crane Distributeur de commande - grue	16 Hubzylinder Lifting cylinder Verin de levage	29 Druckschalter Pressure switch Interrupteur a pression
5 Prüfverschraubung Dial gauge connection Porte montre compar.	17 Drosselrückschlagventil One way restrictor Restricteur une direction	30 Überlastblock Overload bloc Bloc de surcharge
6 NOT AUS - Ventil Emergency cut-off valve Soupape d' arret d' urgence	18 Doppeltwirkendes Lasthalteventil Double-acting holding valve Double clapets anti retour pilotes	31 Sperrzylinder Lock cylinder Verin de blocage
7 Steuerventil - Abstützung Control valve - stabil. Distributeur de commande - stabil.	19 Schwenkwerk Slewing system Dispositif de pivotement	32 Manometer Pressure gauge Manometre
8 Rücklauffilter Return oil filter Filtre retour	20 Lasthalteventil Load holding valve Soupape pilote	33 Überlastventil Overload valve Soupape surpression
9 Anschlußblock Connection block Bloc de connexion	21 Druckaufnehmer Pressure transducer Amortisseurs de pression	34 Druckspitzentaster Pressure peak button Touche pour pointes de pressio
10 Ölkühler Oil cooler Refrigerant d' huile	22 Knickzylinder Outer boom ram Verin deuxieme bras	35 Schnellkupplung Quick-coupling Raccord rapide
11 Schieberstange mit Not Aus-Stellung Control rod with emergency cut off Tige de commande avec soupaped d'arret d' urgence	23 Schubzylinder I Boom extension ram I Verin d'extension I	36 Greiferzylinder Grab cylinder Verin de grappin
12 Entsperrb. Rückschlagventil Pilot controlled check valve Pilote soupape de retenue	24 Schubzylinder II Boom extension ram II Verin d'extension II	37 Rotator Rotator. Rotateur
	25 Schubzylinder III Boom extension ram III Verin d'extension III	

PALFINGER

Modell Model Type

PK 23500

SKES 23.0kN (2.3t)

Seilwinde
Rope winch
Treuil a cable

DTS406SGA/08

Kapitel Chapter Chapitre

0100

Seite Page Page

04/2005

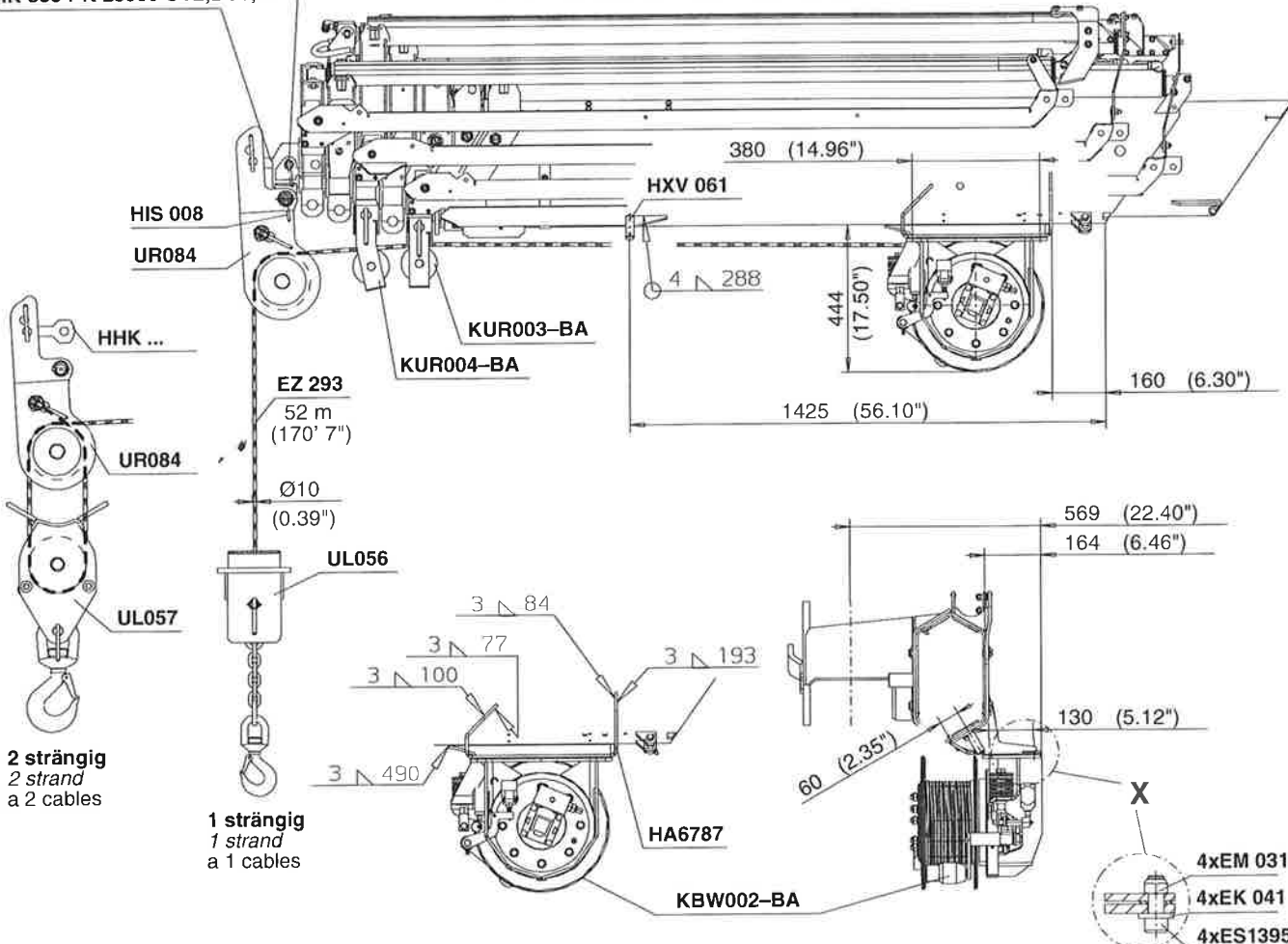
Ausgabe Edition Edition

HIS 061 PK 23500 CV3,DV2,EV1
HIS 073 PK 23500 CV2,DV1,E

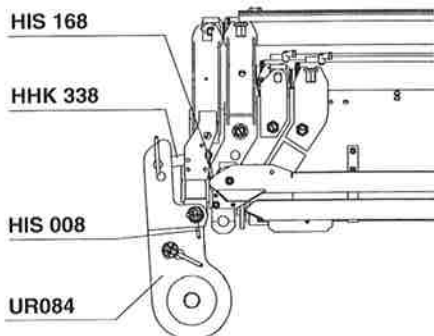
Konstruktionsänderungen vorbehalten, fertigungstechn. Toleranzen müssen berücksichtigt werden.
Subject to change, production tolerances have to be taken into account.
Sous reserve de modifications de conception. Les tolerances relatives a la technique de production doivent etre prises en consideration.

HHK 051 PK 23500 CV3,DV2,EV1
HHK 338 PK 23500 CV2,DV1,E

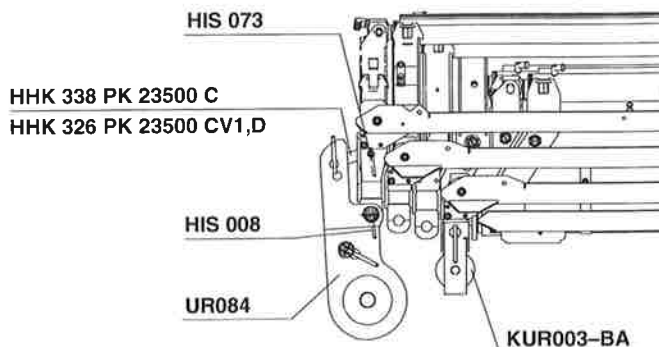
PK 23500 CV2, CV3, DV1, DV2, E, EV1



PK 23500 A,B



PK 23500 C, CV1, D



Gewicht (Winde und Motor) ohne Seil:
Weight (winch and motor) without rope:
Poids (treuil et moteur) sans cable:

Ausführung gültig bis 04/2005
Type valid to 04/2005
Version valide a 04/2005

	KBW002-BA 23.0kN (2.3t)	HA6787	KUR003-BA	KUR004-BA	HXV 061	UR084	UL056	UL057	EZ 293	HHK ...	HIS ...
Gewicht: Weight: Poids:	105 kg (231 lbs)	7 kg (15 lbs)	4 kg (9 lbs)	4 kg (9 lbs)	0.5 kg (1 lbs)	21 kg (46 lbs)	26 kg (57 lbs)	30 kg (66 lbs)	24 kg (53 lbs)	7 kg (15 lbs)	1 kg (2 lbs)

Konstruktionsänderungen vorbehalten, fertigungstechn. Toleranzen müssen berücksichtigt werden.

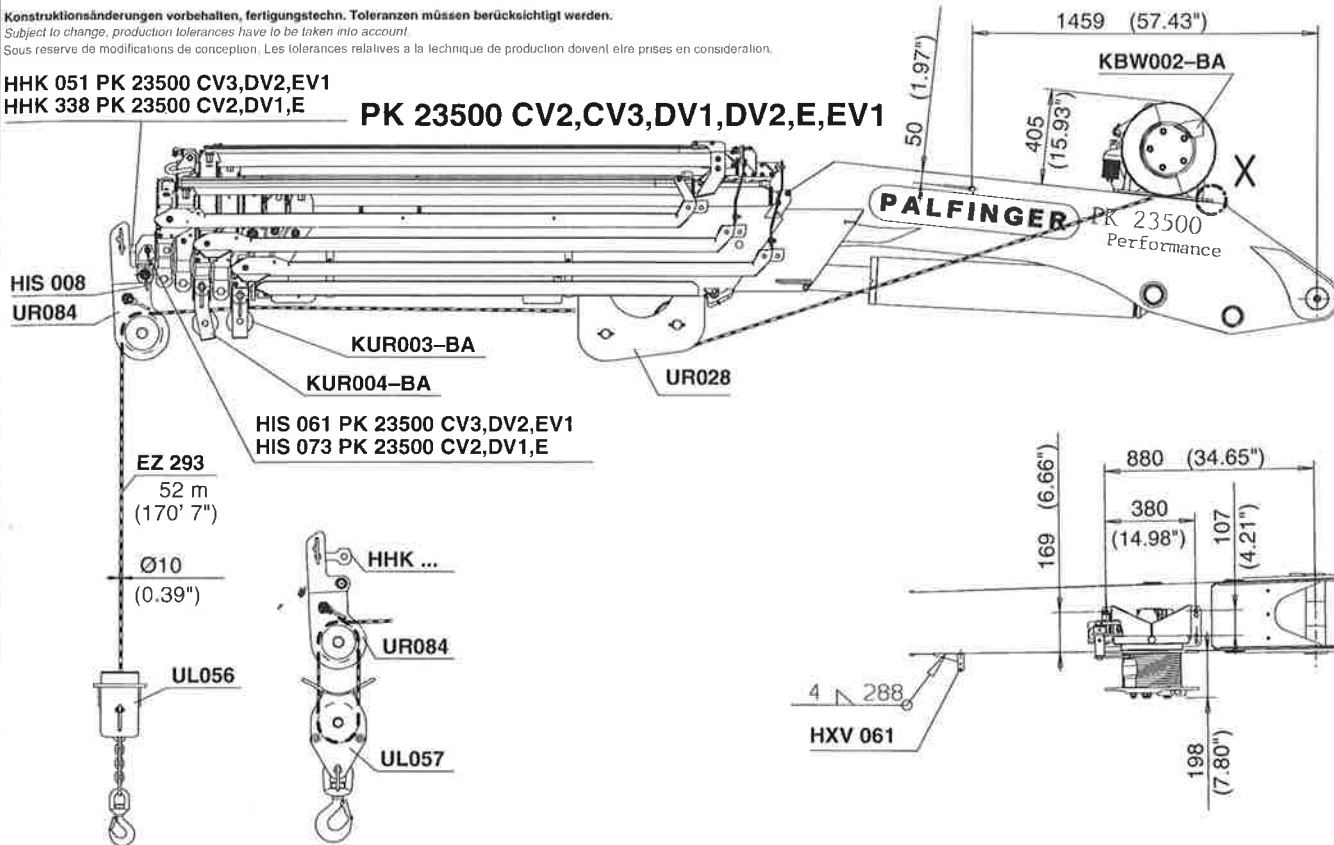
Subject to change, production tolerances have to be taken into account.

Sous réserve de modifications de conception. Les tolérances relatives à la technique de production doivent être prises en considération.

HHK 051 PK 23500 CV3,DV2,EV1

HHK 338 PK 23500 CV2,DV1,E

PK 23500 CV2,CV3,DV1,DV2,E,EV1



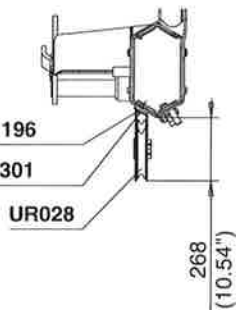
1 strängig
1 strand
a 1 cables

2 strängig
2 strand
a 2 cables

ES 196 bei Montage verklebt!
ES 196 at assembly glued!
ES 196 se serre en vissant!

4xES 196

4xEK 301

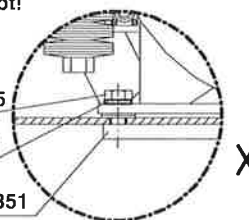


ES 1395 bei Montage verklebt!
ES 1395 at assembly glued!
ES 1395 se serre en vissant!

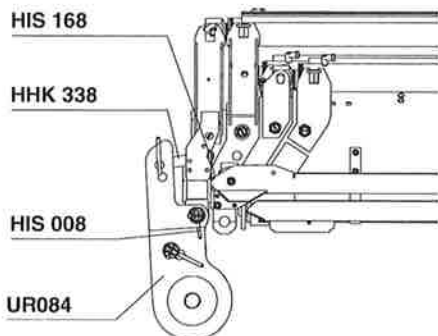
4xES1395

4xEK 041

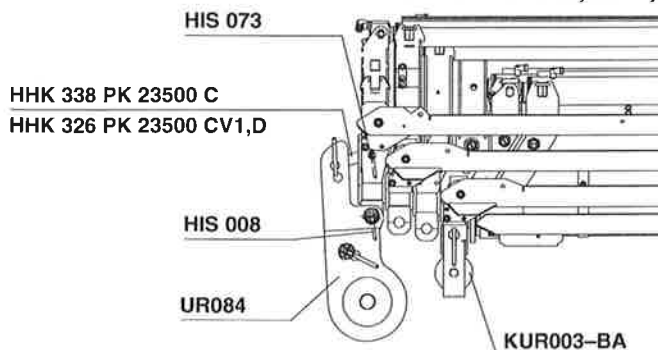
2xHTR 1351



PK 23500 A,B



PK 23500 C,CV1,D



Gewicht (Winde und Motor) ohne Seil:
Weight (winch and motor) without rope:
Poids (treuil et moteur) sans cable:

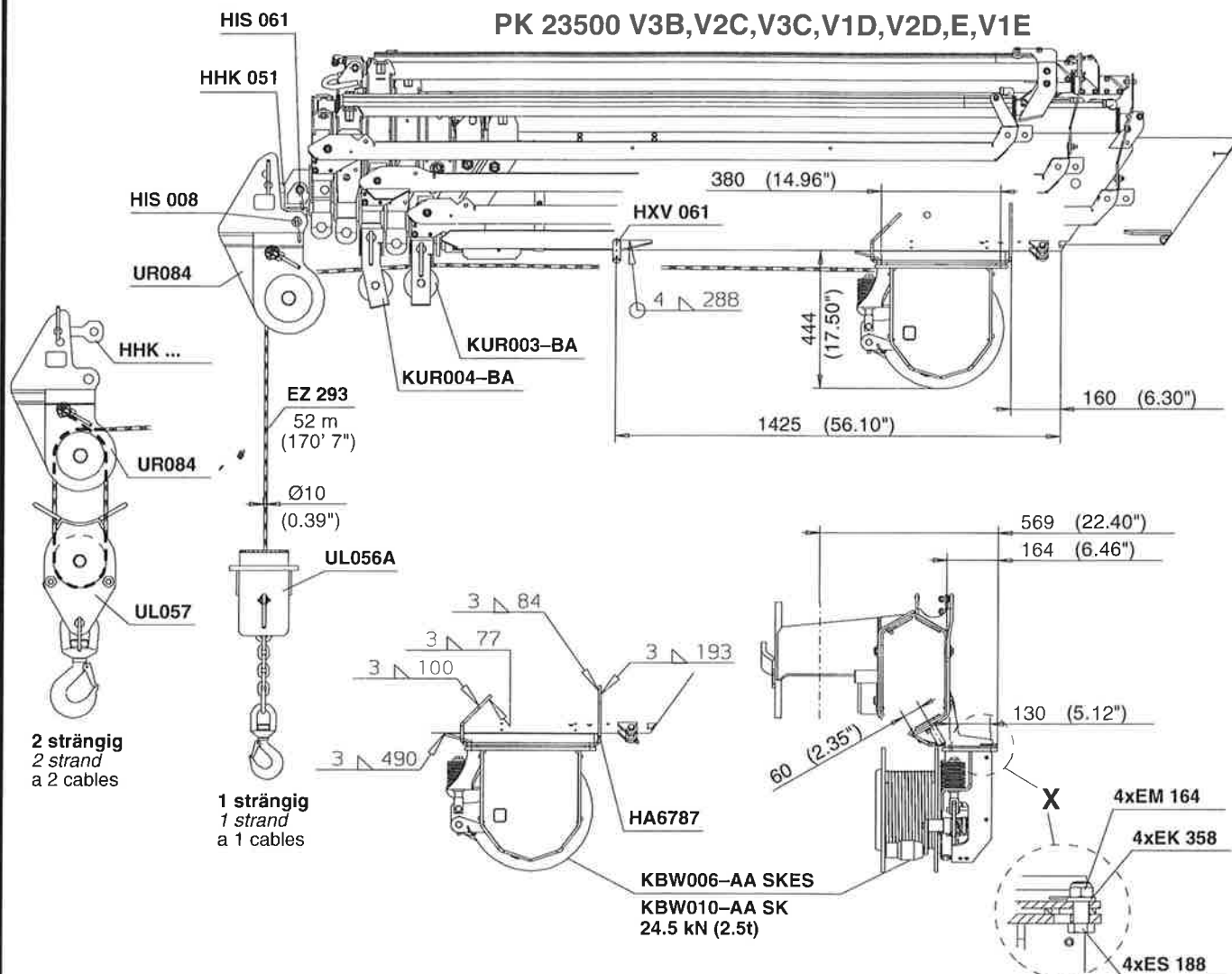
Ausführung gültig bis 04/2005

Type valid to 04/2005

Version valide a 04/2005

	KBW002-BA 23.0kN (2.3t)	UR028	KUR003-BA	KUR004-BA	HXV 061	UR084	UL056	UL057	EZ 293	HHK ...	HIS ...
Gewicht: Weight: Poids:	105 kg (231 lbs)	23 kg (51 lbs)	4 kg (9 lbs)	4 kg (9 lbs)	0.5 kg (1 lbs)	21 kg (46 lbs)	26 kg (57 lbs)	30 kg (66 lbs)	24 kg (53 lbs)	7 kg (15 lbs)	1 kg (2 lbs)

Konstruktionsänderungen vorbehalten, fertigungstechn. Toleranzen müssen berücksichtigt werden.
Subject to change, production tolerances have to be taken into account.
Sous reserve de modifications de conception, Les tolerances relatives a la technique de production doivent etre prises en consideration.



HIS 073A PK 23500 B
HIS 168 PK 23500 A

HHK 326 PK 23500 B
HHK 339 PK 23500 A

HIS 008

UR084

PK 23500 A,B

PK 23500 V1B,V2B,C,V1C,D

HIS 061 PK 23500 V2B,V1C,D
HIS 073A PK 23500 V1B,C

HHK 051 PK 23500 V2B,V1C,D
HHK 326 PK 23500 V1B,C

HIS 008

UR084

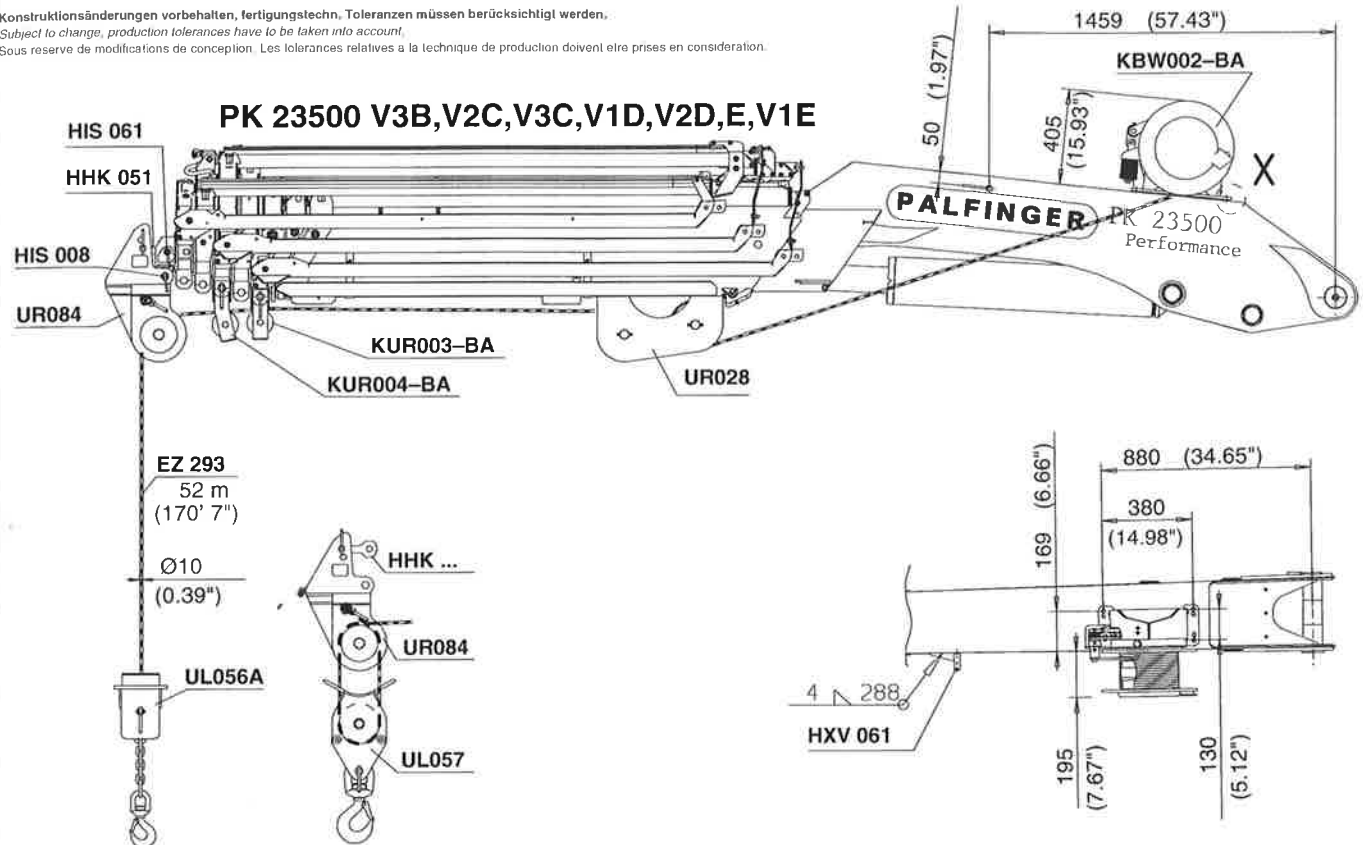
KUR003-BA

Gewicht (Winde und Motor) ohne Seil:
Weight (winch and motor) without rope:
Poids (treuil et moteur) sans cable:

Ausführung gültig ab 04/2005
Type valid from 04/2005
Version valide a partir 04/2005

	KBW006-AA SKES	KBW010-AA SK	HA6787	KUR003-BA KUR004-BA	HXV 061	UR084	UL056A	UL057	EZ 293	HHK ...	HIS ...
Gewicht: Weight: Poids:	105 kg (231 lbs)	85 kg (187 lbs)	7 kg (15 lbs)	4 kg (9 lbs)	0.5 kg (1 lbs)	25 kg (55 lbs)	26 kg (57 lbs)	30 kg (66 lbs)	24 kg (53 lbs)	7 kg (15 lbs)	1 kg (2 lbs)

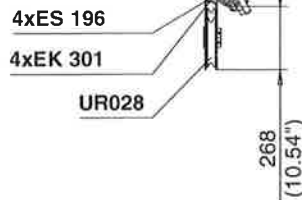
Konstruktionsänderungen vorbehalten, fertigungstechn. Toleranzen müssen berücksichtigt werden.
Subject to change, production tolerances have to be taken into account.
Sous réserve de modifications de conception. Les tolérances relatives à la technique de production doivent être prises en considération.



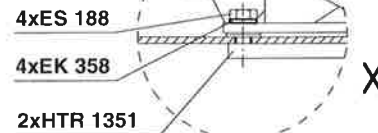
1 strängig
1 strand
a 1 cables

2 strängig
2 strand
a 2 cables

ES 196 bei Montage verklebt!
ES 196 at assembly glued!
ES 196 se serre en vissant!

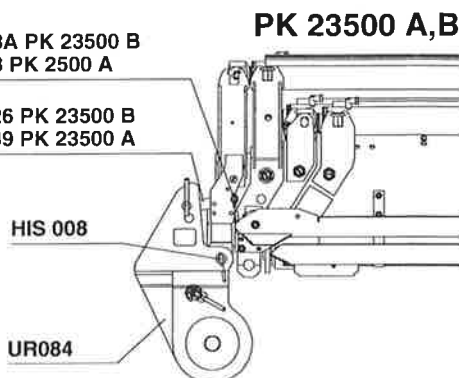


ES 188 bei Montage verklebt!
ES 188 at assembly glued!
ES 188 se serre en vissant!



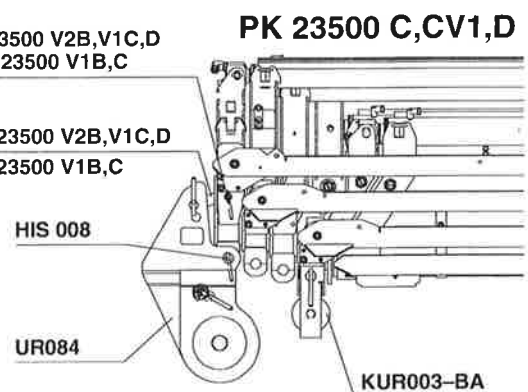
HIS 073A PK 23500 B
HIS 168 PK 2500 A

HHK 326 PK 23500 B
HHK 339 PK 23500 A



HIS 061 PK 23500 V2B, V1C, D
HIS 073A PK 23500 V1B, C

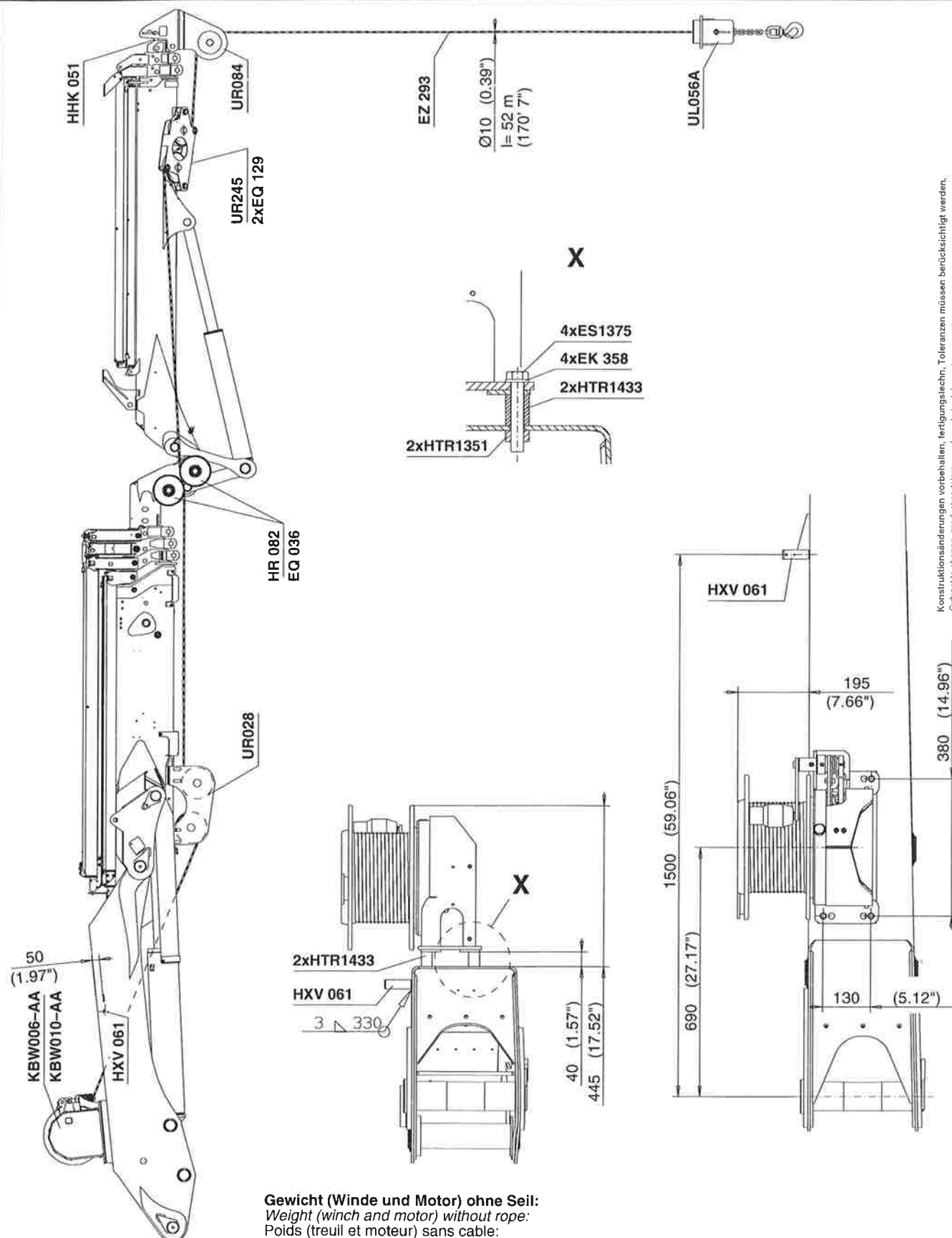
HHK 051 PK 23500 V2B, V1C, D
HHK 326 PK 23500 V1B, C



Gewicht (Winde und Motor) ohne Seil:
Weight (winch and motor) without rope:
Poids (treuil et moteur) sans cable:

Ausführung gültig ab 04/2005
Type valid from 04/2005
Version valide a partir 04/2005

	KBW006-AA SHES	KBW010-AA SH	UR028	KUR003-BA KUR004-BA	HXV 061	UR084	UL056A	UL057	EZ 293	HHK ...	HIS ...
Gewicht: Weight: Poids:	105 kg (231 lbs)	85 kg (187 lbs)	23 kg (51 lbs)	4 kg (9 lbs)	0.5 kg (1 lbs)	25 kg (55 lbs)	26 kg (57 lbs)	30 kg (66 lbs)	24 kg (53 lbs)	7 kg (15 lbs)	1 kg (2 lbs)



Gewicht (Winde und Motor) ohne Seil:
Weight (winch and motor) without rope:
Poids (treuil et moteur) sans cable:

	KBW006-AA SHES	KBW010-AA SH	2x HTR1433	UR028	UR245	HXV 061	UR084	UL056A	HHK 051	HR 082	EZ 293
Gewicht: Weight: Poids:	105 kg (231 lbs)	85 kg (187 lbs)	8 kg (18 lbs)	24 kg (53 lbs)	18 kg (40 lbs)	0.5 kg (1 lbs)	25 kg (55 lbs)	26 kg (57 lbs)	5 kg (11 lbs)	5 kg (11 lbs)	24 kg (53 lbs)

Konstruktionsänderungen vorbehalten, fertigungstechn. Toleranzen müssen berücksichtigt werden.
Subject to change, production tolerances have to be taken into account.
Sous réserve de modifications de conception. Les tolérances relatives à la technique de production doivent être prises en considération.

PALFINGER

Modell Model Type

PK 23500

PK 23500D PJ040A 24.5kN

Seilwinde
Rope winch
Treuil a cable

DTS406SGA/08

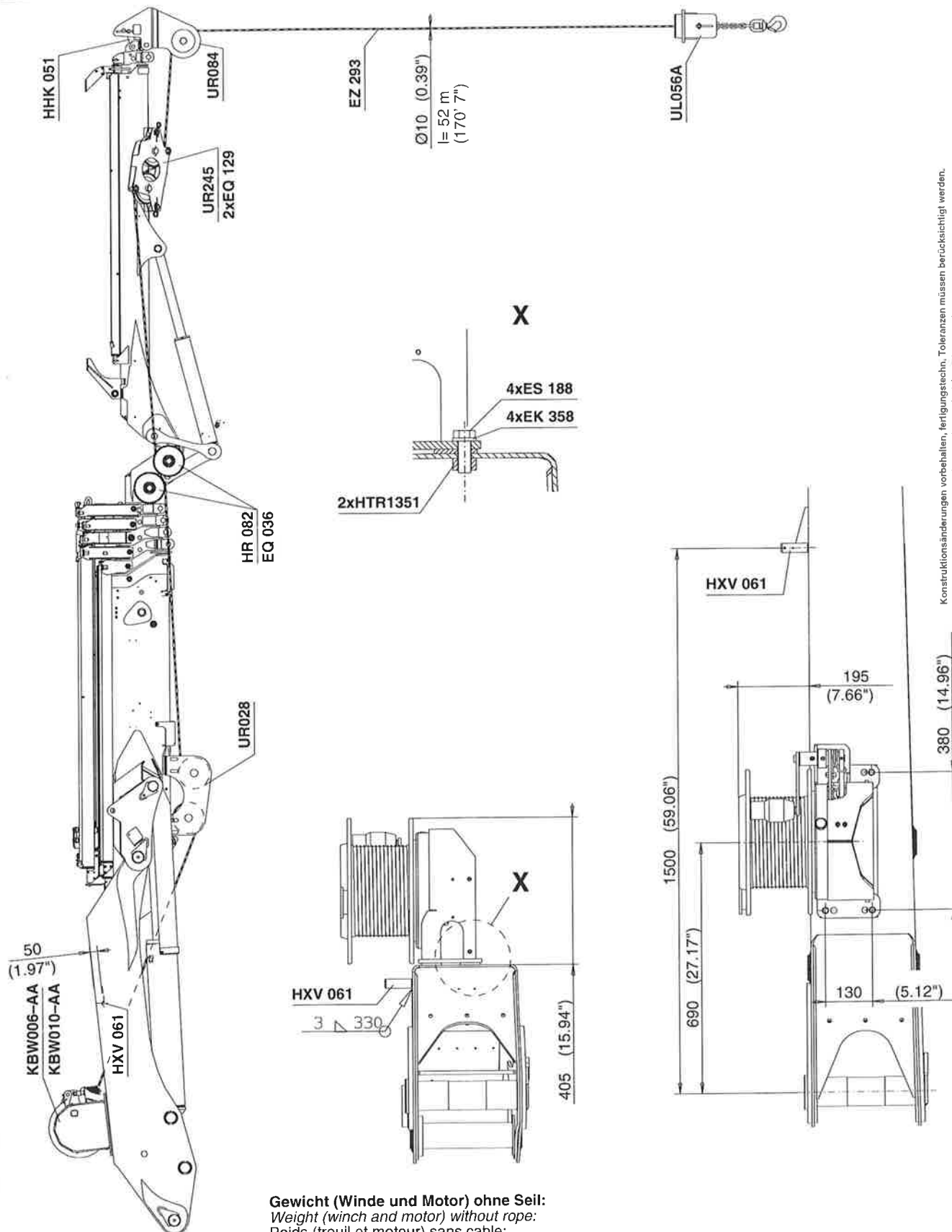
Kapitel Chapter Chapitre

0600

Seite Page Page

01/2008

Ausgabe Edition Edition



Konstruktionsänderungen vorbehalten, fertigungstechn. Toleranzen müssen berücksichtigt werden.
Subject to change, production tolerances have to be taken into account.
Sous réserve de modifications de conception. Les tolérances relatives à la technique de production doivent être prises en considération.

Gewicht (Winde und Motor) ohne Seil:
Weight (winch and motor) without rope:
Poids (treuil et moteur) sans cable:

	KBW006-AA SHES	KBW010-AA SH	UR028	UR245	HXV 061	UR084	UL056A	HHK 051	HR 082	EZ 293
Gewicht: <i>Weight:</i> Poids:	105 kg (231 lbs)	85 kg (187 lbs)	24 kg (53 lbs)	18 kg (40 lbs)	0.5 kg (1 lbs)	25 kg (55 lbs)	26 kg (57 lbs)	5 kg (11 lbs)	5 kg (11 lbs)	24 kg (53 lbs)