

PK 42502

Performance

PALFINGER



COMBINED POWER AND COST-EFFICIENT TECHNOLOGY



ROBUSTLY DESIGNED AND TECHNICALLY REFINED

This exceptional heavy-duty crane impresses with a series of technical highlights and due to its perfect movement geometry. Fitted as standard with PALTRONIC 50 overload protection, E-HPLS, radio remote control showing the percentage of capacity utilisation and the overload situation, the PK 42502 *Performance* sets new standards for the loading of containers and heavy machinery.



POWERFUL - THANKS TO ELECTRONIC HIGH POWER LIFTING SYSTEM (E-HPLS)



ENORMOUS LIFTING CAPACITY AND A LOW DEAD WEIGHT

Return oil utilisation

The high speed of the extension system is impressive. It results from the return oil utilisation feature, which is installed as standard, combined with generously dimensioned hydraulic pipes. This results in increased efficiency during all types of working!



Adjustable slide blocks

These ensure optimal lateral guidance of the extension system.



Double slewing mechanism

The double slewing mechanism minimises slewing backlash and develops a high slewing torque.



Advanced Package

- Oil cooler installed
- Electronic HPLS (High Power Lifting System)
- PALFINGER radio remote control with LED display
- PALTRONIC 50
- Functional Design



Functional Design

- Enclosure of the entire electronic system
- Enclosure in the area of the control valve
- Ergonomic crane control



PALFINGER – CONVINCING ARGUMENTS



Hose equipment for accessories

With this option you provide the oil supply to attachments. The hoses are routed in compact troughs and plastic link chains. They are therefore very well protected.

Internally routed oil passages

The internally routed oil passages make it possible to have a compact design for the extension system. This also ensures perfect protection from damage.

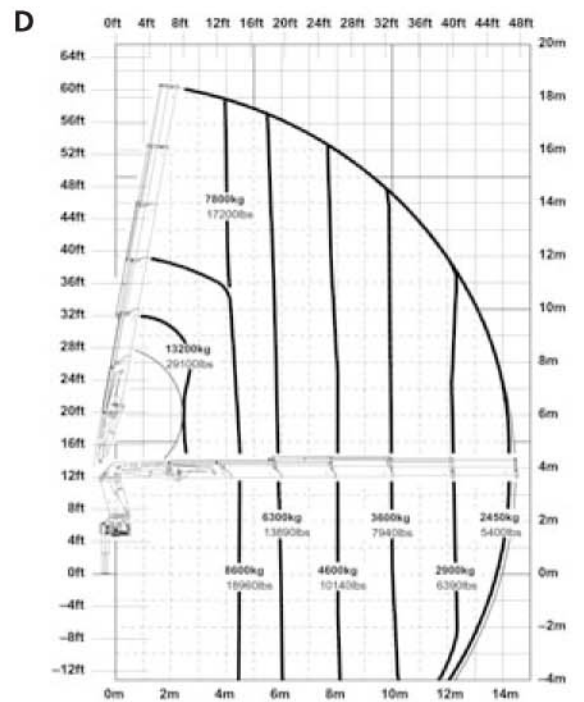
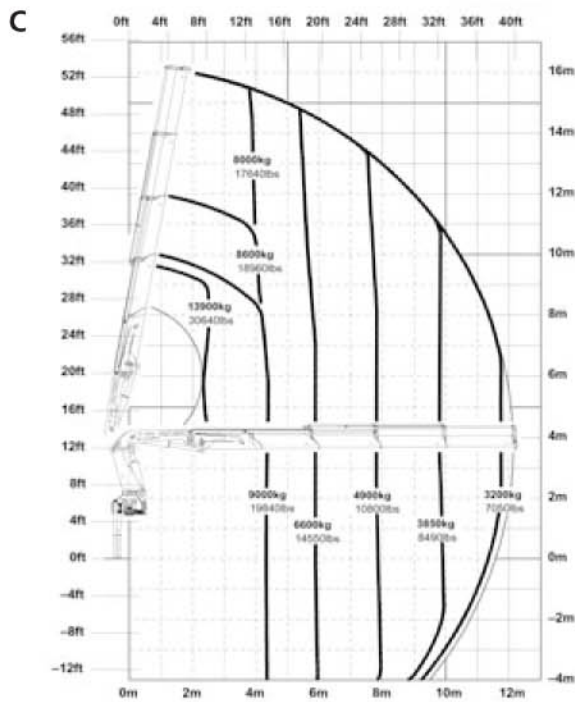
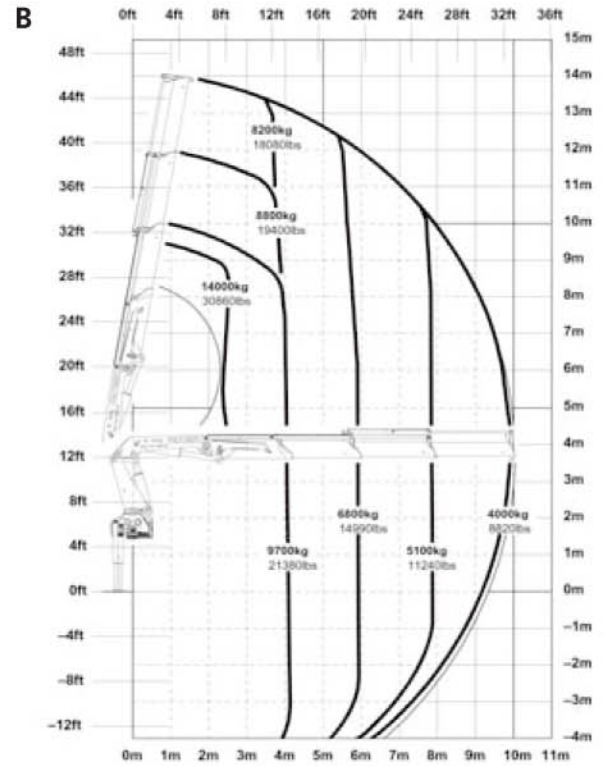
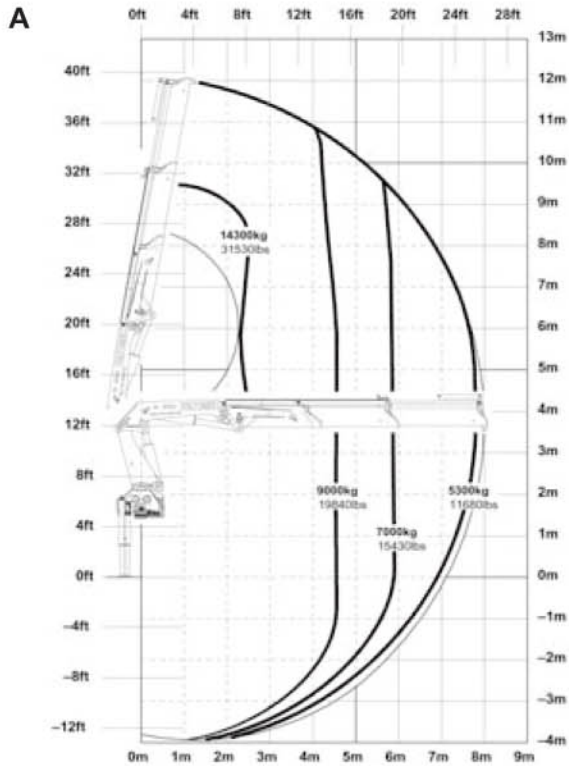


Load-holding valves

They prevent the crane boom from dropping and are fitted as standard to the slewing mechanism, elevating arm, and extension cylinders. The valves are positioned to be protected from being damaged.

RETURN OIL UTILISATION - FITTED AS STANDARD IN COMBINATION WITH LARGE DIAMETER HYDRAULIC LINES

PK 42502 Performance



YOU CAN RELY ON THIS TECHNICAL DATA

Max. lifting capacities

PK 42502 Performance A			
Max. lifting capacities			
Outreach		Capacity	
hydraulic			
4.4 m	14' 5"	9310 kg	20520 lbs
5.9 m	19' 4"	6970 kg	15370 lbs
7.8 m	25' 7"	5300 kg	11680 lbs

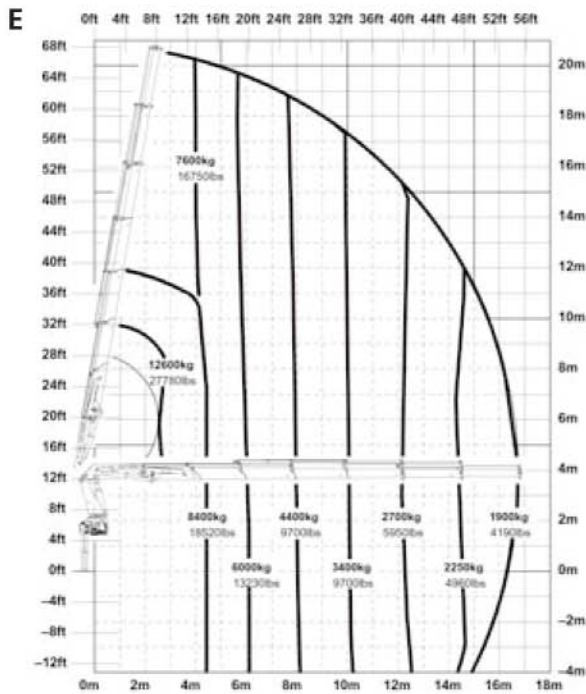
PK 42502 Performance B			
Max. lifting capacities			
Outreach		Capacity	
hydraulic			
4.4 m	14' 5"	9140 kg	20150 lbs
5.9 m	19' 4"	6790 kg	14970 lbs
7.8 m	25' 7"	5110 kg	11270 lbs
9.9 m	32' 6"	4040 kg	8910 lbs

PK 42502 Performance C			
Max. lifting capacities			
Outreach		Capacity	
hydraulic			
4.4 m	14' 5"	8960 kg	19750 lbs
5.9 m	19' 4"	6590 kg	14530 lbs
7.8 m	25' 7"	4900 kg	10800 lbs
9.9 m	32' 6"	3810 kg	8400 lbs
12.0 m	39' 4"	3140 kg	6920 lbs

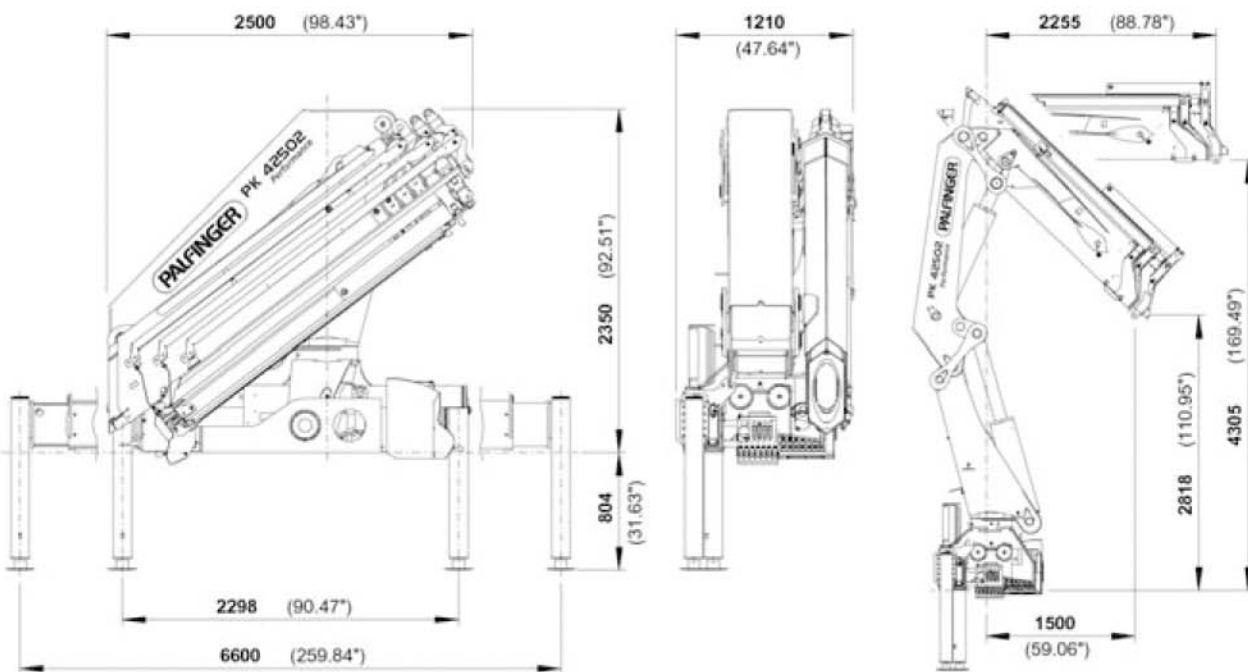
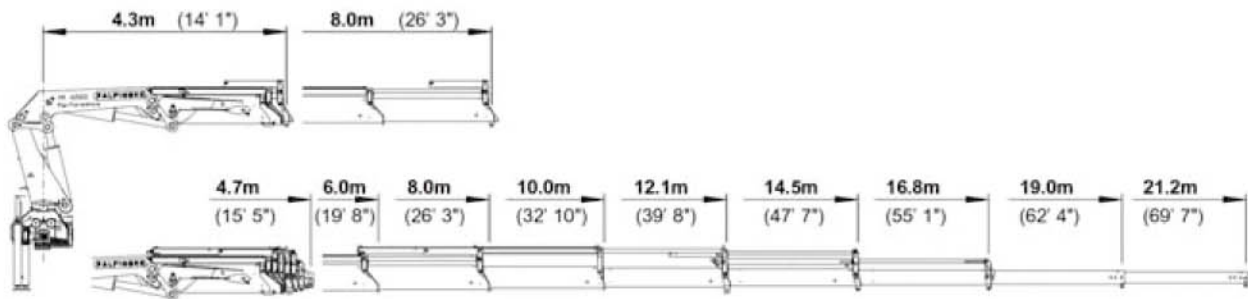
PK 42502 Performance D			
Max. lifting capacities			
Outreach		Capacity	
hydraulic			
4.4 m	14' 5"	8820 kg	19440 lbs
5.9 m	19' 4"	6430 kg	14180 lbs
7.8 m	25' 7"	4650 kg	10250 lbs
9.9 m	32' 6"	3610 kg	7960 lbs
12.0 m	39' 4"	2930 kg	6460 lbs
14.3 m	46' 11"	2440 kg	5380 lbs

PK 42502 Performance E			
Max. lifting capacities			
Outreach		Capacity	
hydraulic			
4.4 m	14' 5"	8700 kg	19180 lbs
5.9 m	19' 4"	6280 kg	13840 lbs
7.8 m	25' 7"	4550 kg	10030 lbs
9.9 m	32' 6"	3430 kg	7560 lbs
12.0 m	39' 4"	2730 kg	6020 lbs
14.3 m	46' 11"	2240 kg	4940 lbs
16.6 m	54' 6"	1910 kg	4210 lbs
manual			
19.0 m	62' 4"	1500 kg	3310 lbs
21.2 m	69' 7"	1100 kg	2430 lbs

The outreaches stated are with a boom angle of 20° and are therefore not the maximum.



THE BEST POSSIBLE COST-EFFICIENCY IS THE PRIMARY MOTIVATION



PK 42502 Performance

Technical Specifications (EN 12999)

Max. lifting moment	42.3 mt/415.0 kNm	305980 ft.lbs
Max. lifting capacity	14340 kg/140.7 kN	31610 lbs
Max. hydraulic outreach	16.8 m	55' 1"
Max. manual outreach	21.2 m	69' 7"
Slewing angle	400°	

PK 42502 Performance

Standard crane

Slewing torque	5.0 mt/49.0 kNm	36130 ft.lbs
Outreach	8.0 m	26' 3"
Stabilizer spread standard	6.6 m	21' 8"
Fitting space required	1,21 m	3' 12"
Width folded	2.5 m	8' 2"
Max. operating pressure	330 bar	4785 psi
Recommended pump capacity with RC- and LS-system	from 80 l/min 17.6 imp.gal./min 21.1 US gal./min to 100 l/min 22.0 imp.gal./min 26.4 US gal./min	
Dead weight standard crane	3970 kg	8750 lbs

Applications shown in the leaflet do not always correspond to the standard specifications. Design and specification are subject to change without prior notice.

