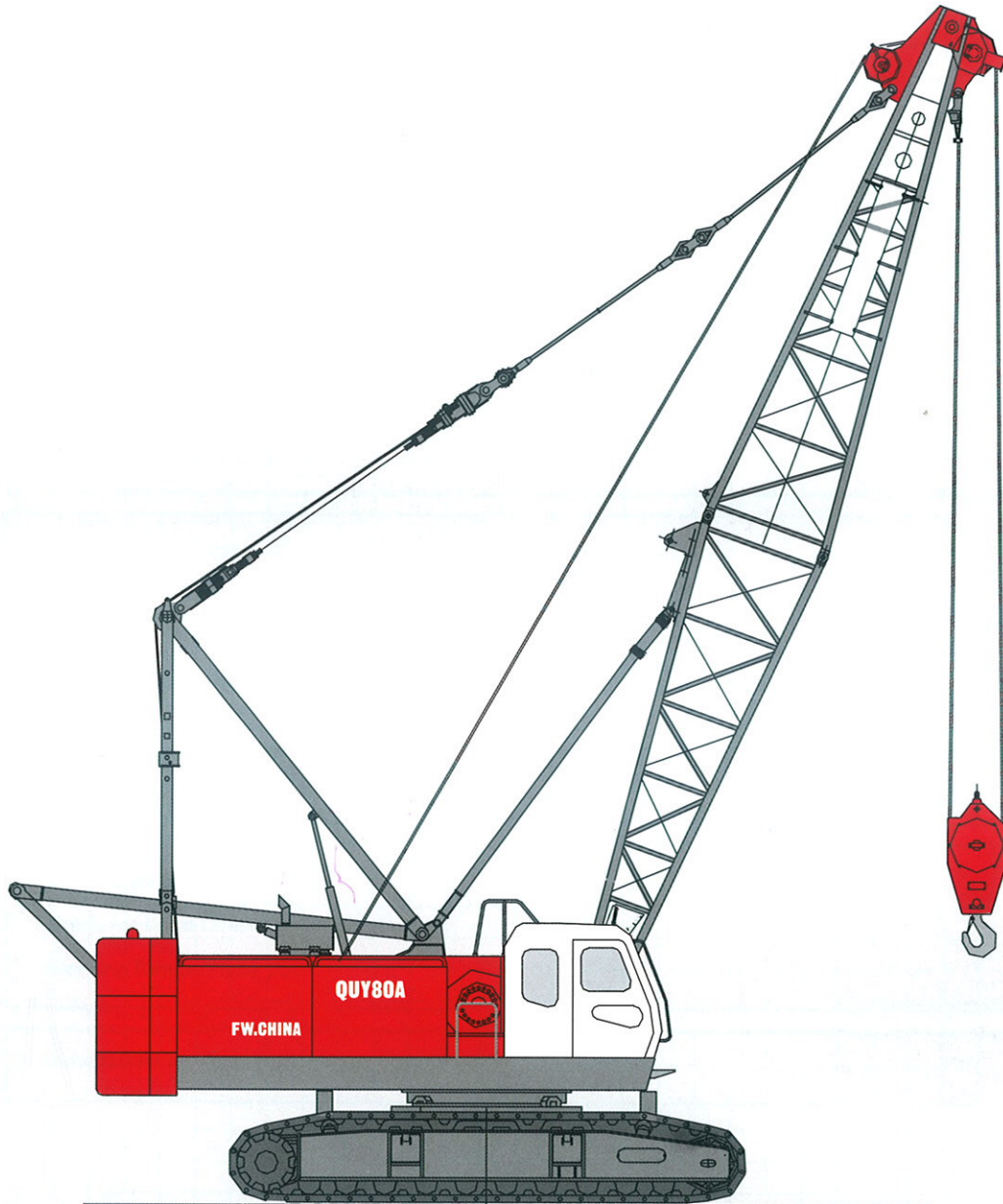


HYDRAULIC CRAWLER CRANE

# QY80A



## 目录 Content

Safety Devices Specifications	01-02 >>
Boom Combination Technical Data Overall Dimensions	03-04 >>
Overall Dimensions Boom and Fixed Jib Combinations	05-06 >>
Load Chart (Standard Boom) Working Range (Standard Boom) Load Chart (Runner) Working Range (Runner)	07-08 >>
Load Chart (Fixed Jib)	09-10 >>
Load Chart (Fixed Jib) Notes for Load Chart Working Range(Fixed Jib)	11-12 >>
Dimensions for Transportation	13-16 >>



## Safety Devices

---

### Hook over hoist prevention (Anti two block)

Both the main and auxiliary lines are equipped with motion cut devices. On activation, the control circuit is cut, the winch stops, and both visual and audible alarms sound.

---

### Boom over hoist prevention

The boom upper limit angle is controlled by the load limit device, and also the boom upper limit switch. When the boom angle is greater than 78 degrees, or less than 30 degrees, the limit switch will stop the luffing motion, and sound a continuous alarm.

---

### Moment Limiter.

The machine is optioned with a Robway RCI-1502 system. It is programmable for various boom and jib configurations. The load sensing is through dyno transducers installed on the ropeways. Angle sensors are installed on the foot of the boom. The display indicates boom angle, load and configuration. When the load is below 90% of the rating, both the computer and the three colour load indicator show green. Between 90 and 100%, the displays show yellow and an intermittent warning alarm sounds. When the load exceeds 100% of rating, the displays show red, a continuous alarm sounds, and the motion cuts stops the winches.

---

### Pawls & Brakes

The main, auxiliary, and luffing winched are fitted with automatic wet disc brakes and pawl systems. The slew has a braking system, along with locking ability in four positions.

---

### Other Safety devices

The machine is equipped with both travel and slew alarms. There is also an anemometer, manual boom angle indicator, and a grade indicator fitted.

---

### Power-plant

The machine is fitted with a Cummins QSL-9, water-cooled, direct injected turbocharged diesel engine of 8.9 litre capacity, producing 209kw (280 hp) at 2000 rpm, and 1356 Nm ( 1000 ft/lbs) torque @ 1500 rpm. Diesel tank capacity is 485 litres.

---

### Hydraulic System

Pumps and motors are manufactured by Rexroth. The main pumps are double variable displacement type. All operations (travel, slew, luffing, and hoisting) can be performed simultaneously. The main winches are driven through planetary gear systems by variable displacement motors. The oil tank capacity is 600 litres.

---

### Control System

The engine / hydraulic control system are electronically controlled by the load conditions, ensuring optimum power for the work in hand.

---

## Specifications

### The Symbols of working conditions



Standard Boom



Runner



Fixed Fly Jib

## Winches

Component	Drum Diameter	Rope Diameter	Rope length	Max Rope Speed
Main Hoist	610mm	26mm	220 mtrs	116 m/min
Auxiliary Hoist	610mm	26mm	180 mtrs	116 m/min
Luffing Winch	440mm	20mm	170 mtrs	54 m/min

## Slew System

The slew is driven by a fixed displacement hydraulic motor, through reduction gears. 360 degree slew with speeds between 1.8 and 3.0 revolutions per minute. The machine is provided with four house lock pin positions.

## Cabin

The fitted with air conditioning, heater and stereo. Mirrors, wipers and a fire extinguisher are all standard equipment.

## Counterweights

7 individual counterweights are fitted, resulting in a total of 24.5 tons.

## Undercarriage

The undercarriage is fabricated from steel plate into a high strength cross braced assembly. Each track is provided with 10 bushed, lubricated & sealed rollers. Drive is by independent hydraulic motors through reduction gearboxes. Track width is 8600mm giving an approximate ground pressure of between 0.828 - 0.880kg/cm<sup>2</sup>. (12-13 psi), depending on the setup configuration. The machine is provided with four hydraulic trans-lifters. Travel speed is 1.3 kph, and a grade ability of 30%

## Booms and Rigging

The booms and jibs are constructed of lattice construction in high strength imported steel pipe.

The main boom is from 13 to 58 meters.

The fixed jib can be set at either 15o or 30o with a boom length of between 37 and 52 meters, and the jib between 9 and 18 meters.

The crane is supplied with hook blocks as follows: 80 ton, 50 ton, 25 ton, and 8 ton.



### Boom Combination

#### Standard Boom

Max. Rated load:  
80t4m  
Max. Boom length:  
58m



Boom  
13m-58m

#### Runner

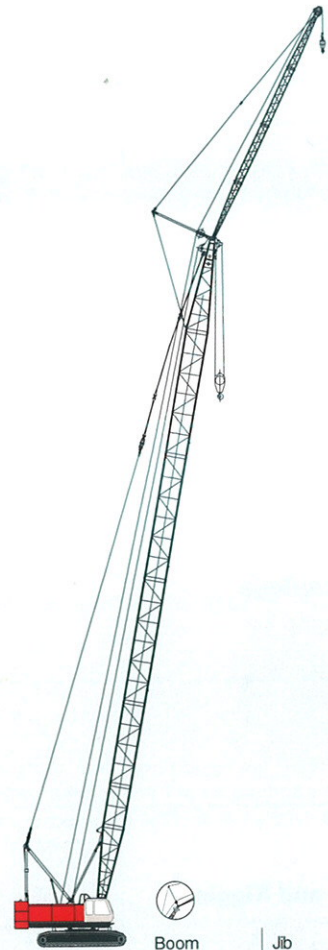
Max. Rated load:  
8t22m  
Max. Boom length:  
58m



Boom  
13m-58m

#### Fixed Jib

Max. Rated load:  
8t20.3m  
Max. Combination:  
49m+18m



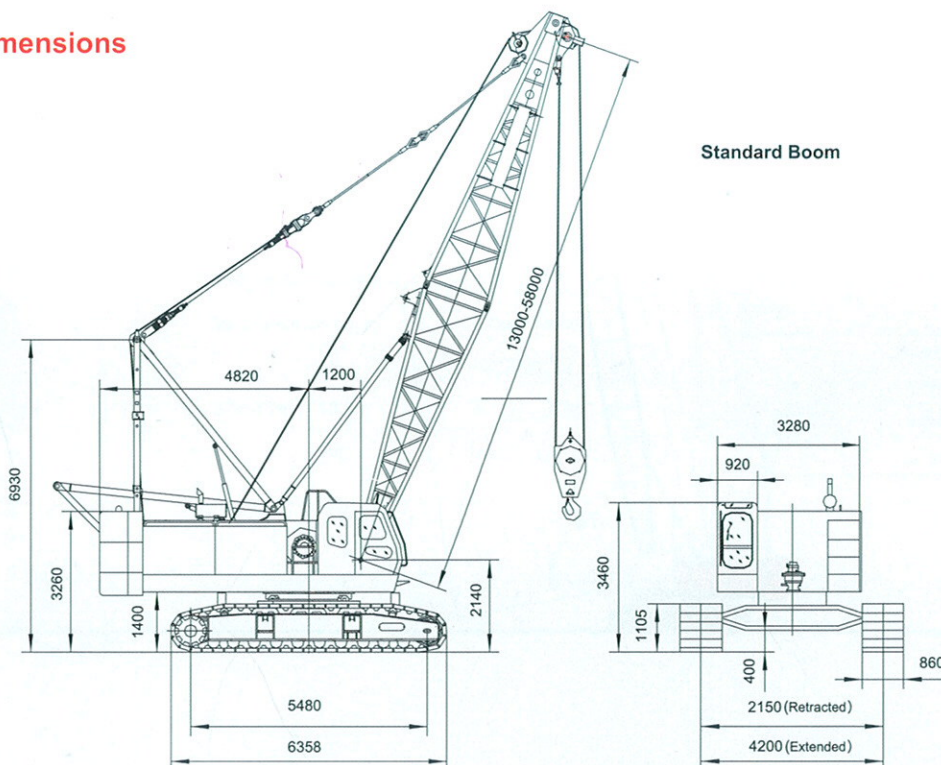
Boom | Jib  
37m-52m | 9m-18m

**Technical Data**

Descriptions		Unit	Value	
Max. Rated Capacity		t	80	
Max. Rated Capacity × Working Radiusment		t·m	80 × 4=320	
Boom Length		m	13~58	
Jib Length		m	9~18	
Max.length of main boom and fixed jib		m	49+18	
Boom Angle		°	30~80	
Working speed	Line Speed	Hoist	m/min	※ High116/58 Low80/40
		Lower	m/min	※ High116/58 Low80/40
		Boom hoist	m/min	※ 54
		Boom Lower	m/min	54
	Slew speed		r/min	High3 Low 1.8
	Travel speed		km/h	※1.3
Parts of line	10	Single pull	8t	
Grade ability (with basic boom and cabin on rear side)		%	30	
Rated power output/rotating speed of diesel engine		KW/rpm	Cummins QSL-9 209KW/2000rpm	
Mass of the crane (with basic boom)		t	83	
Ground pressure	(with basic boom)	Mpa	0.0828	
	(with max. main boom)		0.088	
	(with max. main boom + jib)		0.088	
Counterweight		t	24.5	

Note: Speed with \*may vary with the different load.

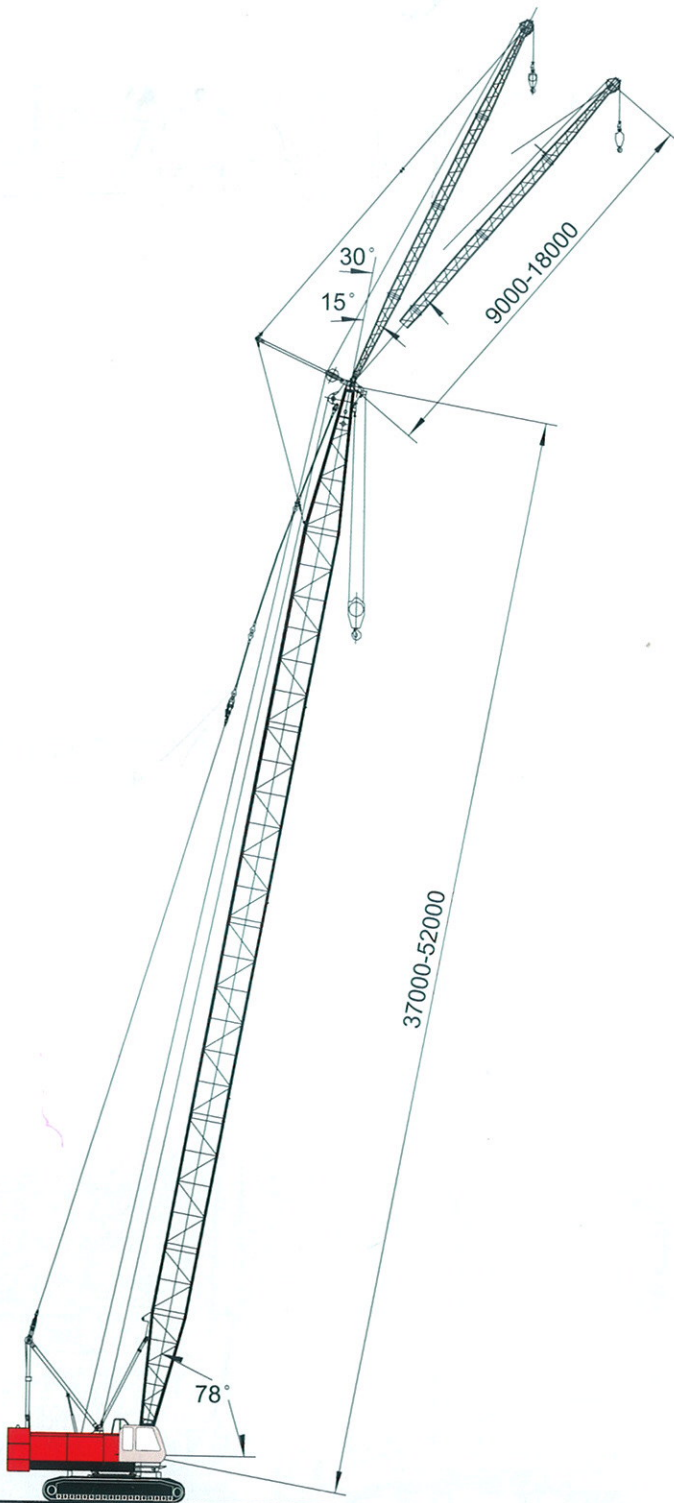
**Overall Dimensions**





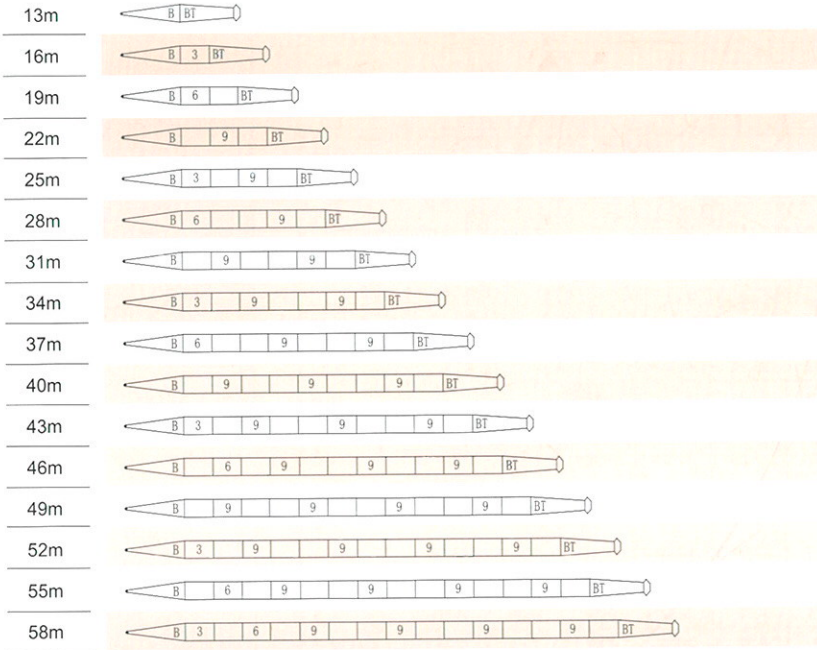
### Overall Dimensions

Fixed Jib



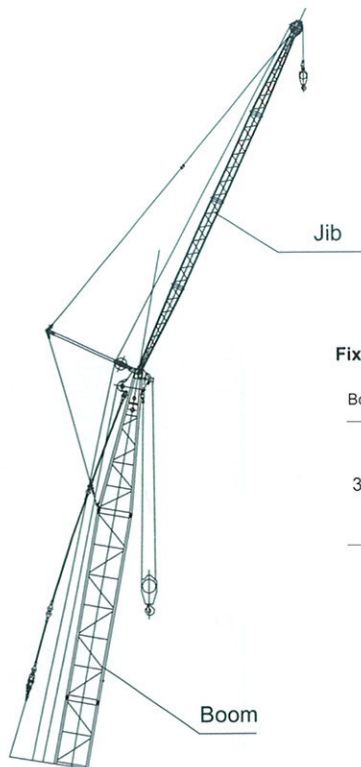
## Boom and Fixed Jib Combinations

### Boom Combination (Standard Boom)



### Note

Symbol	Boom length	Remarks
	6.5m	6.5m boom foot
	6.5m	6.5m boom top
	3 m	3m insert section
	6 m	6m insert section
	9 m	9m insert section



### Fixed Jib Combination

Boom length	Jib Length	Jib Combination
	9m	
37m-52m	13.5m	
	18m	

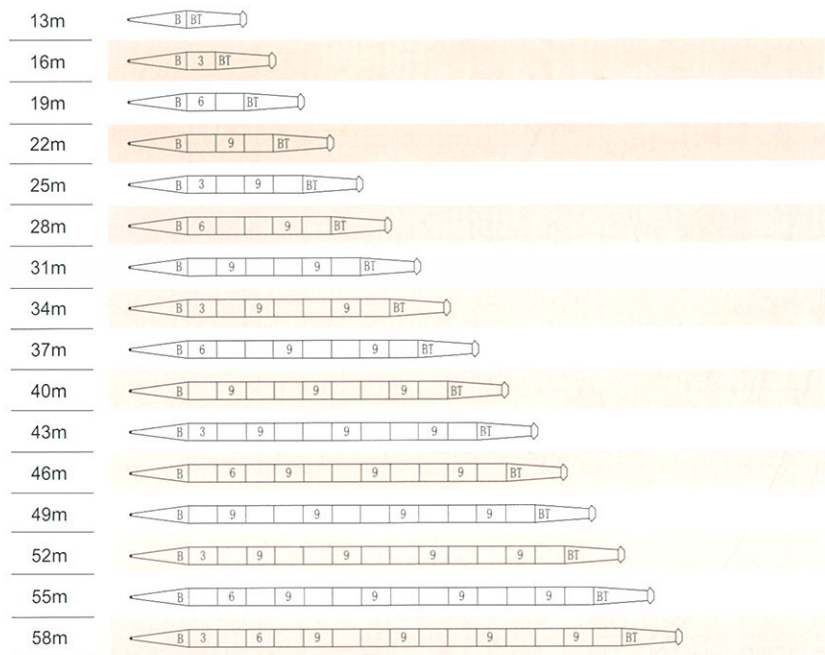
### Note

Symbol	Jib length	Remarks
	4.5m	4.5m jib foot
	4.5m	4.5m jib top
	4.5m	4.5m insert section



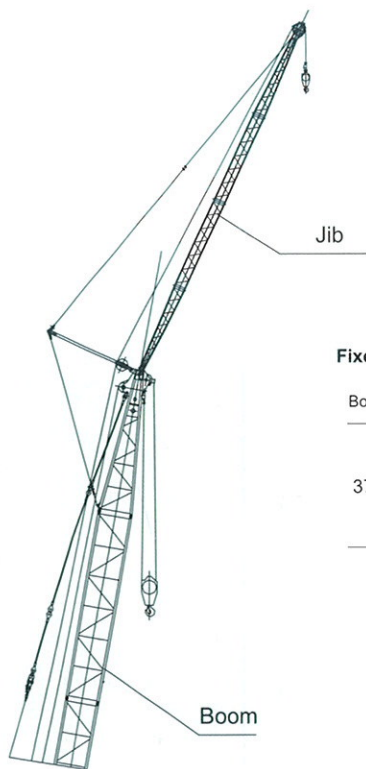
## Boom and Fixed Jib Combinations

### Boom Combination (Standard Boom)



### Note

Symbol	Boom length	Remarks
	6.5m	6.5m boom foot
	6.5m	6.5m boom top
	3 m	3m insert section
	6 m	6m insert section
	9 m	9m insert section



### Fixed Jib Combination

Boom length	Jib Length	Jib Combination
	9m	
37m-52m	13.5m	
	18m	

### Note

Symbol	Jib length	Remarks
	4.5m	4.5m jib foot
	4.5m	4.5m jib top
	4.5m	4.5m insert section



### Load Chart (Standard Boom)



13m-58m

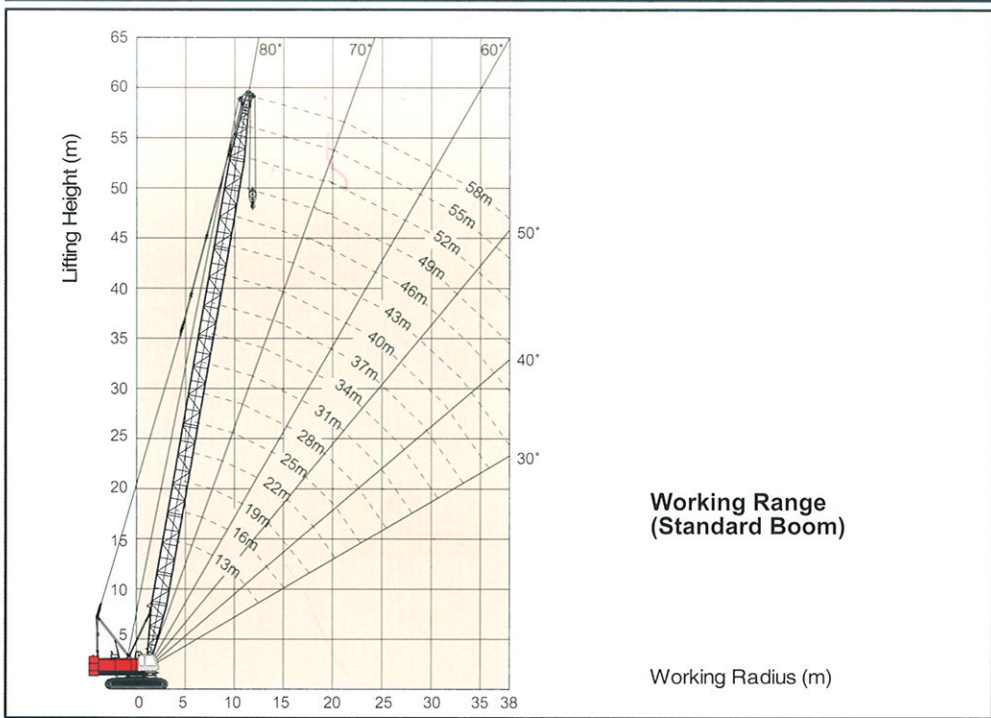


360°



24.6t

Boom length (m) Working Radius	13	19	25	31	37	43	49	55	58	Boom length (m) Working Radius
4.0	80.00									4.0
4.5	75.11	(5.15m)								4.5
5.0	65.47	61.92								5.0
5.5	55.98	55.69	(6.40m)							5.5
6.0	47.72	47.51	47.31							6.0
6.5	42.72	42.50	42.28							6.5
7.0	38.18	37.95	37.73	(7.65m)						7.0
7.5	34.49	34.26	34.03	32.89						7.5
8.0	31.44	31.20	30.97	30.80	(8.89m)					8.0
8.5	28.87	28.63	28.40	28.22	26.23					8.5
9.0	26.68	26.44	26.20	26.02	25.78	(10.14m)				9.0
10.0	23.13	22.89	22.64	22.46	22.21	21.54	(11.38m)			10.0
11.0	20.39	20.14	19.90	19.71	19.46	19.21	18.13	(12.64m)		11.0
12.0	18.21	17.96	17.71	17.52	17.26	17.01	16.82	15.38	(13.26m)	12.0
13.0	16.43	16.18	15.92	15.73	15.47	15.22	15.03	14.77	14.20	13.0
14.0	(12.46m)	14.69	14.44	14.25	13.99	13.73	13.54	13.28	13.12	14.0
15.0		13.25	12.99	12.80	12.54	12.29	12.10	11.84	11.68	15.0
16.0		12.19	11.90	11.75	11.49	11.23	11.04	10.78	10.62	16.0
18.0		10.75	10.23	10.04	9.78	9.52	9.32	9.06	8.90	18.0
20.0		(17.65m)	8.77	8.58	8.32	8.06	7.87	7.60	7.45	20.0
22.0			7.73	7.54	7.27	7.02	6.83	6.56	6.40	22.0
24.0			7.35	6.68	6.42	6.16	5.97	5.71	5.55	24.0
26.0			(22.85m)	5.79	5.54	5.28	5.10	4.84	4.68	26.0
28.0				5.21	4.96	4.70	4.51	4.26	4.10	28.0
30.0					4.46	4.20	4.02	3.76	3.60	30.0
32.0					3.84	3.59	3.41	3.17	3.02	32.0
34.0					3.61	3.23	3.05	2.81	2.66	34.0
36.0					(33.24m)	2.82	2.65	2.41	2.26	36.0
38.0						2.55	2.37	2.14	1.99	38.0



Working Range (Standard Boom)

Working Radius (m)

# Load Chart (Runner)



13m-58m

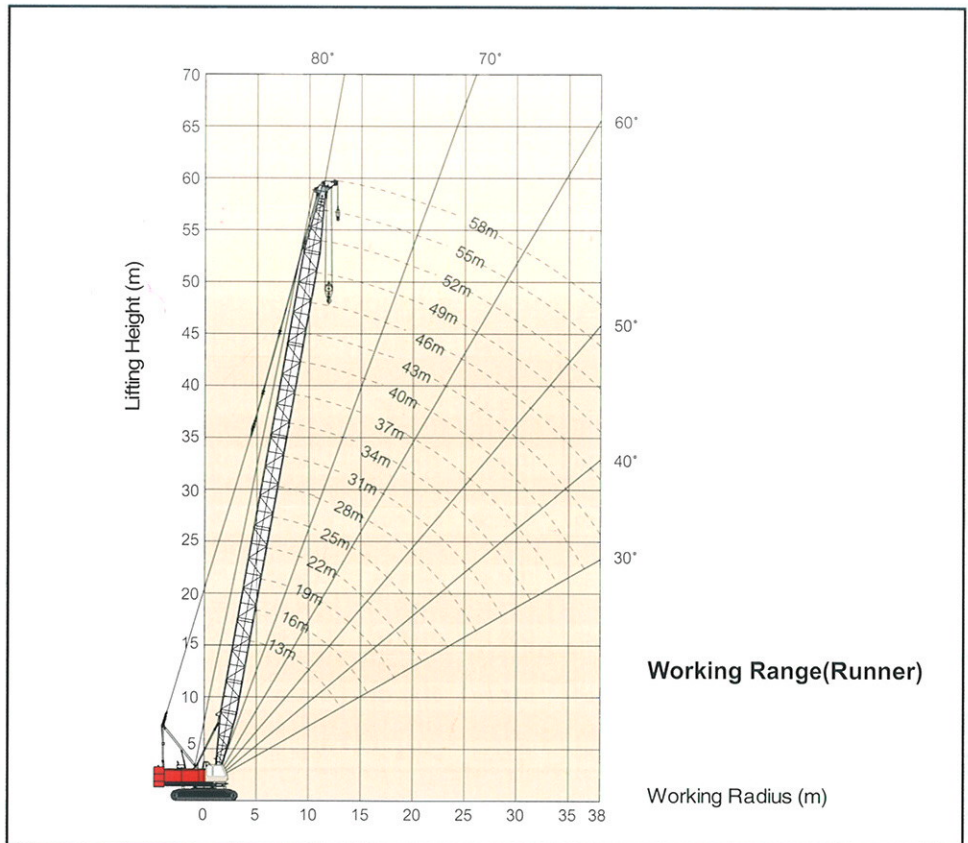


360°



24.6t

(m) Working Radius	Boom length (m)									(m) Working Radius
	13	19	25	31	37	43	49	55	58	
4.0	8.00									4.0
4.5	8.00	(5.15m)								4.5
5.0	8.00	8.00								5.0
5.5	8.00	8.00	(6.40m)							5.5
6.0	8.00	8.00	8.00							6.0
6.5	8.00	8.00	8.00							6.5
7.0	8.00	8.00	8.00	(7.65m)						7.0
7.5	8.00	8.00	8.00	8.00						7.5
8.0	8.00	8.00	8.00	8.00	(8.89m)					8.0
8.5	8.00	8.00	8.00	8.00	8.00					8.5
9.0	8.00	8.00	8.00	8.00	8.00	(10.14m)				9.0
10.0	8.00	8.00	8.00	8.00	8.00	8.00	(11.38m)			10.0
11.0	8.00	8.00	8.00	8.00	8.00	8.00	8.00	(12.64m)		11.0
12.0	8.00	8.00	8.00	8.00	8.00	8.00	8.00	8.00	(13.26m)	12.0
13.0	8.00	8.00	8.00	8.00	8.00	8.00	8.00	8.00	8.00	13.0
14.0	(12.46m)	8.00	8.00	8.00	8.00	8.00	8.00	8.00	8.00	14.0
15.0		8.00	8.00	8.00	8.00	8.00	8.00	8.00	8.00	15.0
16.0		8.00	8.00	8.00	8.00	8.00	8.00	8.00	8.00	16.0
18.0		8.00	8.00	8.00	8.00	8.00	8.00	8.00	8.00	18.0
20.0		(17.65m)	8.00	8.00	8.00	8.00	8.00	8.00	8.00	20.0
22.0			8.00	8.00	8.00	7.90	7.67	7.36	7.17	22.0
24.0			8.00	7.59	7.25	6.93	6.70	6.39	6.20	24.0
26.0			(22.85m)	6.79	6.45	6.12	5.89	5.57	5.38	26.0
28.0				6.11	5.76	5.43	5.20	4.88	4.68	28.0
30.0					5.17	4.84	4.60	4.28	4.09	30.0
32.0					4.66	4.32	4.08	3.76	3.57	32.0
34.0					4.37	3.87	3.63	3.31	3.11	34.0
36.0					(33.24m)	3.47	3.23	2.90	2.70	36.0
38.0						3.11	2.87	2.54	2.34	38.0





Load Chart (Fixed jib)

09

Fushun Excavator Corporation Ltd.



37m-52m



15°, 30°  
9m-18m



360°



24.6t

m	Boom Length 37m										
	Jib Length 9.0m		13.5m				18.0				
	Jib Angle 15°	Working Radius	Jib Angle 30°	Working Radius	Jib Angle 15°	Working Radius	Jib Angle 30°	Working Radius	Jib Angle 15°	Working Radius	Jib Angle 30°
13.0	8.00	14.90	5.50	15.00	7.00	17.90	4.00	17.10	5.00	20.90	3.20
13.7	8.00	15.70	5.50	15.90	7.00	18.70	4.00	18.00	5.00	21.80	3.20
14.5	8.00	16.40	5.50	16.70	7.00	19.50	4.00	18.90	5.00	22.70	3.20
15.3	8.00	17.10	5.50	17.50	7.00	20.30	4.00	19.80	5.00	23.50	3.20
16.0	8.00	17.90	5.50	18.40	7.00	21.10	4.00	20.70	5.00	24.30	3.20
16.8	8.00	18.60	5.50	19.20	7.00	21.90	4.00	21.60	5.00	25.20	3.20
17.5	8.00	19.30	5.50	20.00	7.00	22.70	4.00	22.40	5.00	26.00	3.20
18.3	8.00	20.00	5.50	20.80	7.00	23.40	4.00	23.30	5.00	26.80	3.20
19.0	8.00	20.70	5.50	21.60	7.00	24.20	4.00	24.20	5.00	27.60	3.20
19.7	8.00	21.50	5.50	22.40	7.00	25.00	4.00	25.00	5.00	28.40	3.20
20.5	8.00	22.20	5.50	23.20	7.00	25.70	4.00	25.90	5.00	29.20	3.20
21.2	8.00	22.80	5.50	24.00	6.93	26.40	4.00	26.70	5.00	30.00	3.20
21.9	7.66	23.50	5.50	24.70	6.61	27.20	4.00	27.60	5.00	30.80	3.20
22.6	7.32	24.20	5.50	25.50	6.32	27.90	4.00	28.40	5.00	31.60	3.20
23.3	7.00	24.90	5.50	26.30	6.05	28.60	4.00	29.20	5.00	32.30	3.20
24.0	6.70	25.50	5.50	27.00	5.80	29.30	4.00	30.00	5.00	33.10	3.20
24.7	6.43	26.20	5.50	27.80	5.57	30.00	4.00	30.80	4.88	33.80	3.20
25.4	6.17	26.90	5.50	28.50	5.35	30.70	4.00	31.60	4.69	34.60	3.20
26.1	5.93	27.50	5.50	29.20	5.14	31.40	4.00	32.40	4.51	35.30	3.20
26.7	5.71	28.10	5.39	30.00	4.95	32.10	4.00	33.20	4.34	36.00	3.20
27.4	5.50	28.80	5.21	30.70	4.77	32.70	4.00	34.00	4.19	36.70	3.20



37m-52m



15°, 30°  
9m-18m



360°



24.6t

m	Boom Length 40m										
	Jib Length 9.0m		13.5m				18.0				
	Jib Angle 15°	Working Radius	Jib Angle 30°	Working Radius	Jib Angle 15°	Working Radius	Jib Angle 30°	Working Radius	Jib Angle 15°	Working Radius	Jib Angle 30°
13.6	8.00	15.50	5.50	15.60	7.00	18.50	4.00	17.70	5.00	21.60	3.20
14.4	8.00	16.30	5.50	16.50	7.00	19.40	4.00	18.60	5.00	22.50	3.20
15.2	8.00	17.10	5.50	17.40	7.00	20.30	4.00	19.60	5.00	23.40	3.20
16.1	8.00	17.90	5.50	18.30	7.00	21.10	4.00	20.60	5.00	24.30	3.20
16.9	8.00	18.70	5.50	19.20	7.00	21.90	4.00	21.50	5.00	25.20	3.20
17.7	8.00	19.50	5.50	20.00	7.00	22.80	4.00	22.40	5.00	26.10	3.20
18.5	8.00	20.20	5.50	20.90	7.00	23.60	4.00	23.40	5.00	26.90	3.20
19.3	3.00	21.00	5.50	21.80	7.00	24.40	4.00	24.30	5.00	27.80	3.20
20.0	8.00	21.80	5.50	22.60	7.00	25.20	4.00	25.20	5.00	28.70	3.20
20.8	8.00	22.50	5.50	23.50	7.00	26.00	4.00	26.10	5.00	29.50	3.20
21.6	7.73	23.30	5.50	24.30	6.69	26.80	4.00	27.00	5.00	30.40	3.20
22.4	7.34	24.00	5.50	25.10	6.37	27.60	4.00	27.90	5.00	31.20	3.20
23.1	6.99	24.80	5.50	26.00	6.06	28.40	4.00	28.80	5.00	32.00	3.20
23.9	6.66	25.50	5.50	26.80	5.79	29.20	4.00	29.70	5.00	32.80	3.20
24.6	6.36	26.20	5.50	27.60	5.53	29.90	4.00	30.50	4.86	33.70	3.20
25.4	6.08	26.90	5.50	28.40	5.29	30.70	4.00	31.40	4.65	34.50	3.20
26.1	5.82	27.60	5.47	29.20	5.06	31.40	4.00	32.30	4.46	35.20	3.20
26.8	5.57	28.30	5.25	30.00	4.85	32.20	4.00	33.10	4.27	36.00	3.20
27.6	5.35	29.00	5.05	30.70	4.66	32.90	4.00	33.90	4.10	36.80	3.20
28.3	5.13	29.70	4.87	31.50	4.48	33.60	4.00	34.70	3.94	37.50	3.20
29.0	4.94	30.30	4.69	32.30	4.30	34.30	4.00	35.60	3.79	38.30	3.20

**Load Chart (Fixed jib)**



37m-52m



15° ,30°  
9m-18m



360°



24.6t

m	Boom Length 43.0m											
	Jib Length 9.0m				13.5m				18.0m			
	Jib Angle 15°	Working Radius	Jib Angle 30°	Working Radius	Jib Angle 15°	Working Radius	Jib Angle 30°	Working Radius	Jib Angle 15°	Working Radius	Jib Angle 30°	Working Radius
14.2	8.00	16.20	5.50	16.30	7.00	19.20	4.00	18.30	5.00	22.20	3.20	
15.1	8.00	17.00	5.50	17.20	7.00	20.10	4.00	19.30	5.00	23.10	3.20	
16.0	8.00	17.90	5.50	18.10	7.00	21.00	4.00	20.30	5.00	24.10	3.20	
16.8	8.00	18.70	5.50	19.10	7.00	21.90	4.00	21.30	5.00	25.10	3.20	
17.7	8.00	19.50	5.50	20.00	7.00	22.80	4.00	22.30	5.00	26.00	3.20	
18.5	8.00	20.40	5.50	20.90	7.00	23.60	4.00	23.30	5.00	26.90	3.20	
19.4	8.00	21.20	5.50	21.80	7.00	24.50	4.00	24.30	5.00	27.90	3.20	
20.2	8.00	22.00	5.50	22.70	7.00	25.40	4.00	25.30	5.00	28.80	3.20	
21.1	7.87	22.80	5.50	23.70	6.83	26.20	4.00	26.20	5.00	29.70	3.20	
21.9	7.43	23.60	5.50	24.50	6.46	27.10	4.00	27.20	5.00	30.60	3.20	
22.7	7.03	24.40	5.50	25.40	6.12	27.90	4.00	28.10	5.00	31.50	3.20	
23.5	6.66	25.20	5.50	26.30	5.80	28.80	4.00	29.10	5.00	32.40	3.20	
24.4	6.32	26.00	5.50	27.20	5.51	29.60	4.00	30.00	4.86	33.30	3.20	
25.2	6.01	26.70	5.50	28.10	5.25	30.40	4.00	30.90	4.63	34.10	3.20	
26.0	5.72	27.50	5.36	28.90	5.00	31.20	4.00	31.90	4.41	35.00	3.20	
26.7	5.45	28.30	5.13	29.80	4.77	32.00	4.00	32.80	4.21	35.80	3.20	
27.5	5.21	29.00	4.91	30.60	4.55	32.80	4.00	33.70	4.02	36.70	3.20	
28.3	4.97	29.80	4.70	31.40	4.35	33.60	4.00	34.60	3.84	37.50	3.20	
29.1	4.76	30.50	4.51	32.20	4.16	34.40	3.87	35.40	3.67	38.30	3.20	
29.8	4.56	31.20	4.33	33.10	3.99	35.20	3.72	36.30	3.52	39.10	3.20	
30.6	4.37	31.90	4.16	33.90	3.82	35.90	3.58	37.20	3.37	39.90	3.11	



37m-52m



15° ,30°  
9m-18m



360°



24.6t

m	Boom Length 46.0m											
	Jib Length 9.0m				13.5m				18.0m			
	Jib Angle 15°	Working Radius	Jib Angle 30°	Working Radius	Jib Angle 15°	Working Radius	Jib Angle 30°	Working Radius	Jib Angle 15°	Working Radius	Jib Angle 30°	Working Radius
14.8	8.00	16.80	5.50	16.90	7.00	19.80	4.00	18.90	5.00	22.80	3.20	
15.8	8.00	17.70	5.50	17.90	7.00	20.80	4.00	20.00	5.00	23.80	3.20	
16.7	8.00	18.60	5.50	18.90	7.00	21.70	4.00	21.10	5.00	24.80	3.20	
17.6	8.00	19.50	5.50	19.90	7.00	22.70	4.00	22.10	5.00	25.80	3.20	
18.5	8.00	20.40	5.50	20.80	7.00	23.60	4.00	23.20	5.00	26.80	3.20	
19.4	8.00	21.20	5.50	21.80	7.00	24.50	4.00	24.20	5.00	27.80	3.20	
20.3	8.00	22.10	5.50	22.80	7.00	25.40	4.00	25.20	5.00	28.80	3.20	
21.2	7.70	23.00	5.50	23.70	6.71	26.40	4.00	26.20	5.00	29.80	3.20	
22.1	7.24	23.80	5.50	24.70	6.32	27.30	4.00	27.30	5.00	30.70	3.20	
23.0	6.82	24.70	5.50	25.60	5.96	28.20	4.00	28.30	5.00	31.70	3.20	
23.8	6.43	25.50	5.50	26.60	5.63	29.10	4.00	29.30	4.97	32.60	3.20	
24.7	6.08	26.40	5.50	27.50	5.32	30.00	4.00	30.30	4.71	33.50	3.20	
25.6	5.76	27.20	5.38	28.40	5.05	30.80	4.00	31.20	4.46	34.50	3.20	
26.4	5.46	28.00	5.12	29.30	4.79	31.70	4.00	32.20	4.24	35.40	3.20	
27.3	5.19	28.80	4.88	30.20	4.55	32.60	4.00	33.20	4.03	36.30	3.20	
28.1	4.93	29.60	4.65	31.10	4.33	33.40	4.00	34.10	3.83	37.20	3.20	
28.9	4.70	30.40	4.44	32.00	4.12	34.20	3.82	35.10	3.65	38.10	3.20	
29.8	4.48	31.20	4.24	32.90	3.93	35.10	3.65	36.00	3.47	38.90	3.18	
30.6	4.27	32.00	4.06	33.70	3.75	35.90	3.50	36.90	3.31	39.80	3.04	
31.4	4.08	32.80	3.88	34.60	3.58	36.70	3.35	37.80	3.16	40.60	2.92	
32.2	3.90	33.50	3.72	35.40	3.42	37.50	3.21	38.70	3.02	41.50	2.80	



Load Chart (Fixed jib)

11

Fushun Excavator Corporation Ltd.



37m-52m



15° ,30°  
9m-18m



360°



24.6t

m	49.0m											
	9.0m				13.5m				18.0			
	Jib Angle	15°	Jib Angle	30°	Jib Angle	15°	Jib Angle	30°	Jib Angle	15°	Jib Angle	30°
Working Radius	8.00	17.40	5.50	17.50	7.00	20.40	4.00	19.60	5.00	23.40	3.20	
15.5	8.00	18.40	5.50	18.60	7.00	21.40	4.00	20.70	5.00	24.50	3.20	
16.4	8.00	19.30	5.50	19.60	7.00	22.40	4.00	21.80	5.00	25.60	3.20	
17.4	8.00	20.20	5.50	20.60	7.00	23.40	4.00	22.90	5.00	26.60	3.20	
18.4	8.00	21.20	5.50	21.70	7.00	24.40	4.00	24.00	5.00	27.70	3.20	
19.3	8.00	22.10	5.50	22.70	7.00	25.40	4.00	25.10	5.00	28.70	3.20	
20.3	7.59	23.00	5.50	23.70	6.63	26.40	4.00	26.10	5.00	29.70	3.20	
21.2	7.10	23.90	5.50	24.70	6.21	27.30	4.00	27.20	5.00	30.70	3.20	
22.2	6.66	24.90	5.50	25.70	5.83	28.30	4.00	28.30	5.00	31.70	3.20	
23.1	6.25	25.80	5.50	26.70	5.49	29.30	4.00	29.30	4.86	32.70	3.20	
24.1	5.89	26.60	5.47	27.70	5.17	30.20	4.00	30.40	4.58	33.70	3.20	
25.0	5.55	27.50	5.18	28.70	4.88	31.10	4.00	31.40	4.33	34.70	3.20	
25.9	5.24	28.40	4.91	29.60	4.61	32.10	4.00	32.50	4.09	35.70	3.20	
26.8	4.96	29.30	4.66	30.60	4.36	33.00	4.00	33.50	3.87	36.70	3.20	
27.7	4.70	30.10	4.43	31.50	4.13	33.90	3.81	34.50	3.66	37.60	3.20	
28.6	4.45	31.00	4.21	32.50	3.92	34.80	3.63	35.50	3.47	38.50	3.16	
29.5	4.23	31.80	4.01	33.40	3.72	35.70	3.46	36.50	3.30	39.50	3.01	
30.3	4.02	32.70	3.82	34.30	3.54	36.50	3.30	37.50	3.13	40.40	2.87	
31.2	3.82	33.50	3.64	35.20	3.36	37.40	3.15	38.40	2.98	41.30	2.74	
32.1	3.64	34.30	3.47	36.10	3.20	38.20	3.00	39.40	2.83	42.20	2.62	
32.9	3.47	35.10	3.32	37.00	3.05	39.10	2.87	40.30	2.69	43.10	2.50	



37m-52m



15° ,30°  
9m-18m



360°



24.6t

m	52.0m											
	9.0m				13.5m				18.0			
	Jib Angle	15°	Jib Angle	30°	Jib Angle	15°	Jib Angle	30°	Jib Angle	15°	Jib Angle	30°
Working Radius				18.10	7.00	21.00	4.00					
				19.20	7.00	22.10	4.00					
				20.30	7.00	23.20	4.00					
				21.40	7.00	24.20	4.00					
				22.50	7.00	25.20	4.00					
				23.60	6.56	26.30	4.00					
				24.60	6.11	27.30	4.00					
				25.70	5.71	28.30	4.00					
				26.70	5.34	29.30	4.00					
				27.80	5.00	30.30	4.00					
				28.80	4.70	31.30	4.00					
				29.80	4.42	32.30	4.00					
				30.80	4.16	33.30	3.82					
				31.90	3.92	34.20	3.61					
				32.90	3.69	35.20	3.42					
				33.80	3.49	36.10	3.24					
				34.80	3.30	37.10	3.07					
				35.80	3.12	38.00	2.91					
				36.70	2.95	38.90	2.77					
				37.70	2.79	39.80	2.63					
				38.60	2.65	40.70	2.49					

### The Notes for Load Chart

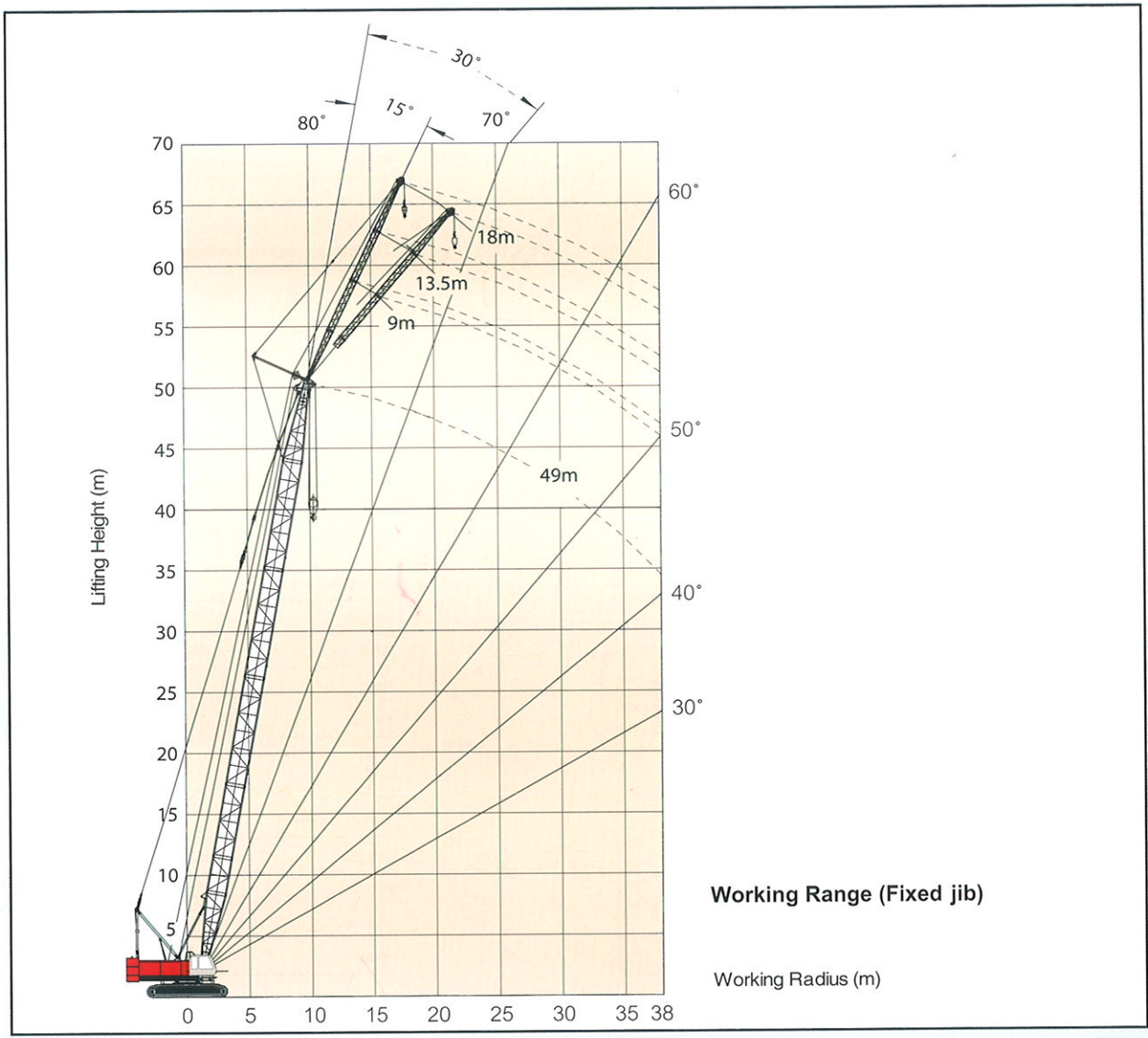
**Notes**

1. Ratings according to GB3811, ISO 4302 and ISO 4305.
2. All lifting capacities are for crane on firm and level ground.
3. The unit in load chart is ton. The rated lifting capacity is within 75% of tipping load.
4. The rated lifting capacity in load chart is calculated based on freely suspended loads and make no allowance for such factors as wind effect on lifted load, ground conditions, operating speed. Therefore, the driver should judge the existing conditions and reduce lifting loads and operating speed accordingly. The weight of hook and slings should also be deducted from the rated lifting capacity.  
Weight of hook blocks: 80T hook block.....1.030t, 50T hook block.....0.667t, 25T hook block.....0.438t, 8T hook block.....0.246t.

5. When mounted with jib or runner, the actual lifting capacity of boom is the weight shown in the load chart deducting the weight of main hook, aux. hook and jib. However, if the actual lifting capacity is less than 0.8t, it is forbidden for the crane to work.

Jib Length	m	9	13.5	18	Runner
Weight	kg	750	1000	1300	420

6. When mounted with jib, boom length is 37-52m.
7. Track frame should be extended when the crane is working.
8. Weight of counterweight is 24.6t.
9. The data in ( ) is the load under the actual working radius.
10. The maximum allowed wind pressure is 60N/m<sup>2</sup>; the maximum allowed wind speed is 9.8m/s.
11. Stability is minimum at side.



Working Range (Fixed jib)

Working Radius (m)

## The Notes for Load Chart

### Notes

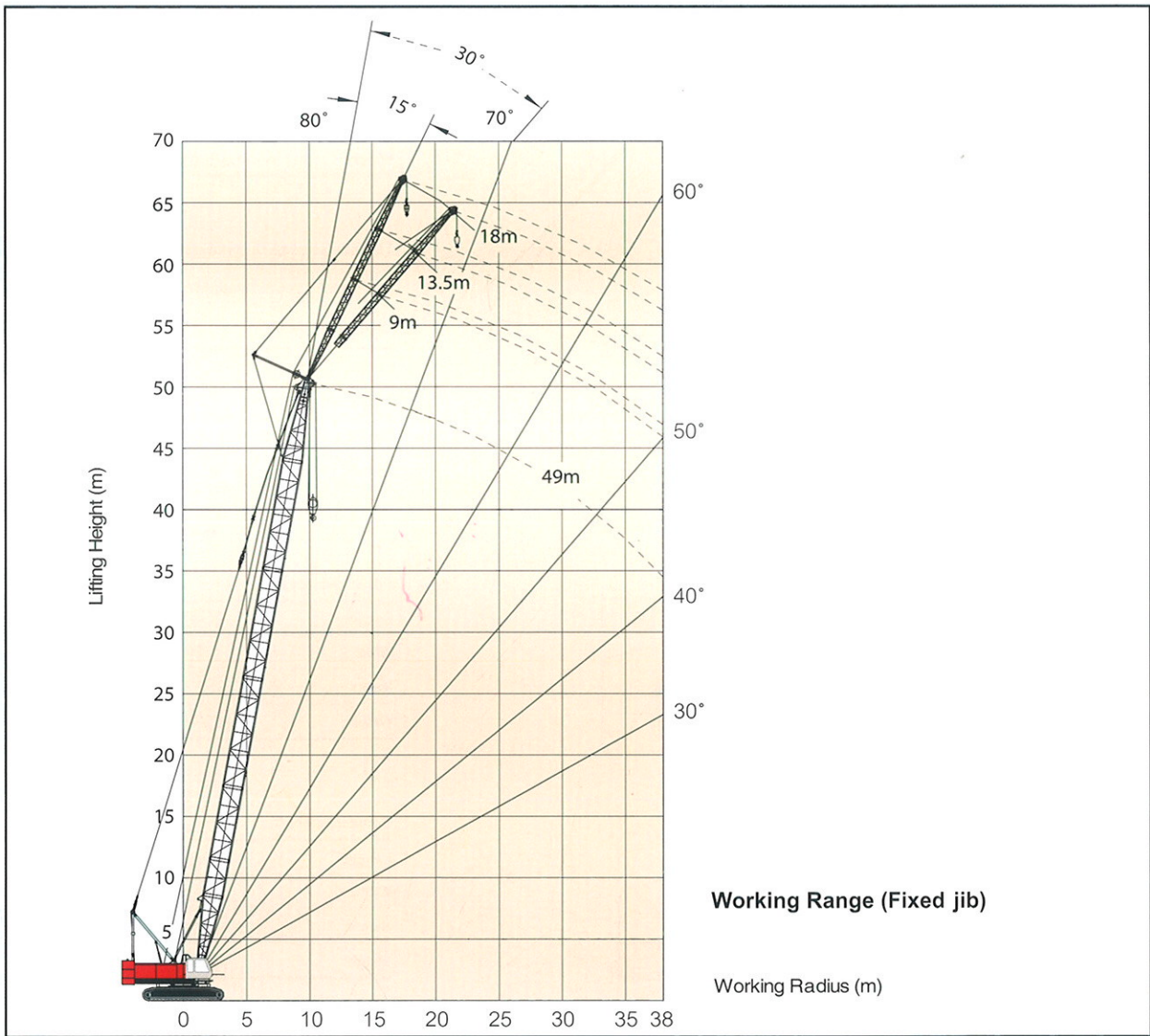
1. Ratings according to GB3811, ISO 4302 and ISO 4305.
2. All lifting capacities are for crane on firm and level ground.
3. The unit in load chart is ton. The rated lifting capacity is within 75% of tipping load.
4. The rated lifting capacity in load chart is calculated based on freely suspended loads and make no allowance for such factors as wind effect on lifted load, ground conditions, operating speed. Therefore, the driver should judge the existing conditions and reduce lifting loads and operating speed accordingly. The weight of hook and slings should also be deducted from the rated lifting capacity.

Weight of hook blocks: 80T hook block.....1.030t, 50T hook block.....0.667t, 25T hook block.....0.438t, 8T hook block.....0.246t.

5. When mounted with jib or runner, the actual lifting capacity of boom is the weight shown in the load chart deducting the weight of main hook, aux. hook and jib. However, if the actual lifting capacity is less than 0.8t, it is forbidden for the crane to work.

Jib Length	m	9	13.5	18	Runner
Weight	kg	750	1000	1300	420

6. When mounted with jib, boom length is 37-52m.
7. Track frame should be extended when the crane is working.
8. Weight of counterweight is 24.6t.
9. The data in ( ) is the load under the actual working radius.
10. The maximum allowed wind pressure is 60N/m<sup>2</sup>; the maximum allowed wind speed is 9.8m/s.
11. Stability is minimum at side.

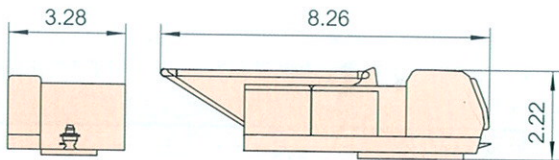




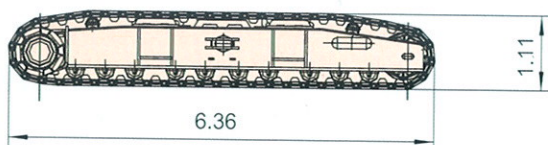


Dimensions for Transportation

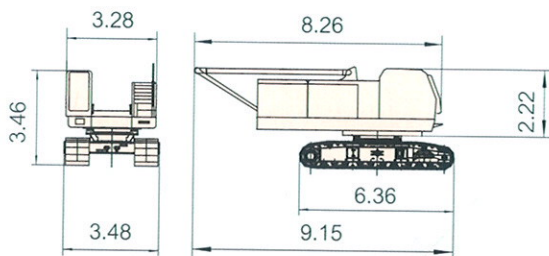
Unit: m



Bosc machine	x1
Length	8.26m
Width	3.28m
Height	2.22m
Weight	18300kg

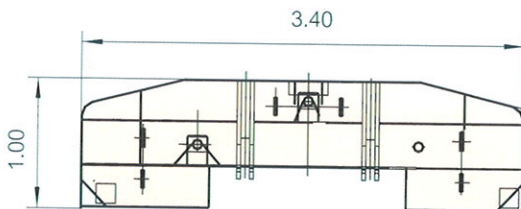


The Crawler	x2
Length	6.36m
Width	1.19m
Height	1.11m
Weight	12000kg

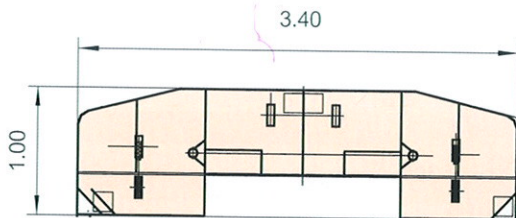


The naked crane	x1
Length	9.15m
Width	3.48m
Height	3.46m
Weight	53000kg

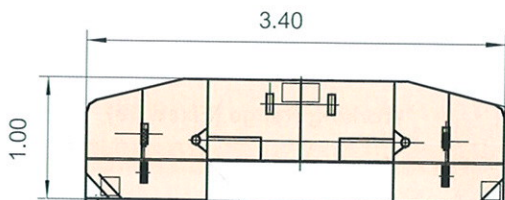
Welded counterweight



Counterweight A	x1
Length	3.40m
Width	1.00m
Height	0.52m
Weight	7811kg



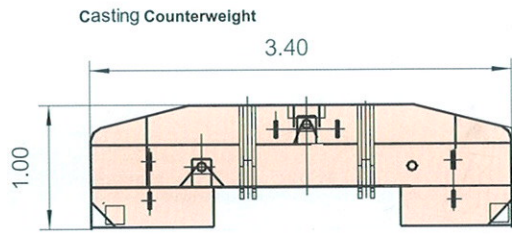
Counterweight B	x1
Length	3.40m
Width	1.00m
Height	0.67m
Weight	9277kg



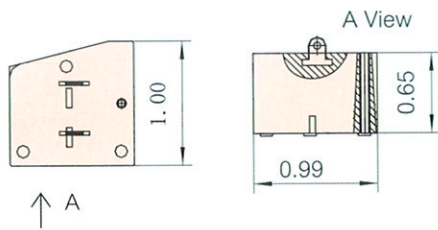
Counterweight C	x1
Length	3.40m
Width	1.00m
Height	0.65m
Weight	7530kg

## Dimensions for Transportation

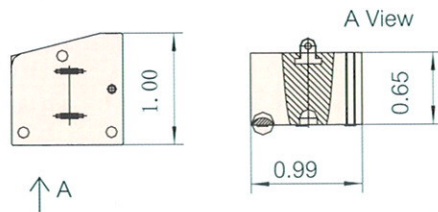
Unit: m



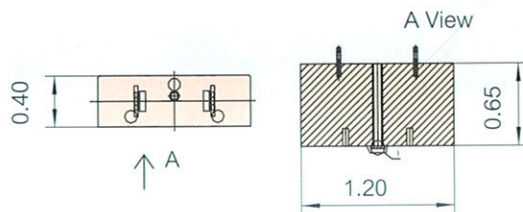
Counterweight A	x1
Length	3.40m
Width	1.00m
Height	0.52m
Weight	7811kg



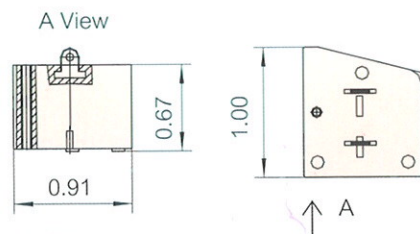
Counterweight I	x1
Length	1.00m
Width	0.99m
Height	0.65m
Weight	4067kg



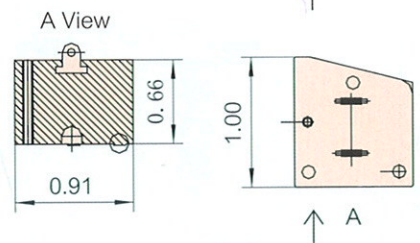
Counterweight II	x1
Length	1.00m
Width	0.99m
Height	0.65m
Weight	4055kg



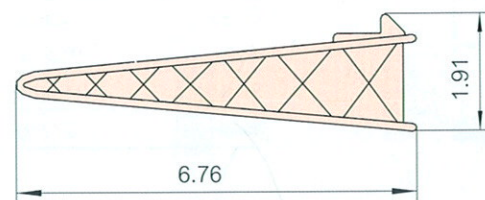
Counterweight III	x1
Length	1.20m
Width	0.40m
Height	0.65m
Weight	2111kg



Counterweight IV	x1
Length	1.00m
Width	0.91m
Height	0.67m
Weight	3656kg



Counterweight V	x1
Length	1.00m
Width	0.91m
Height	0.66m
Weight	3654kg

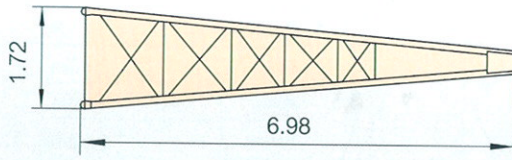


Boom foot	x1
Length	6.76m
Width	1.61m
Height	1.91m
Weight	1800kg

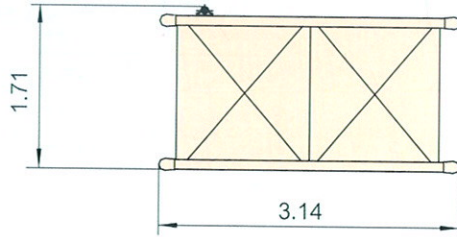


Dimensions for Transportation

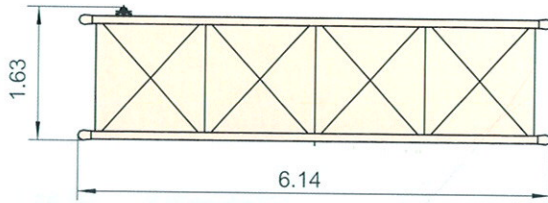
Unit: m



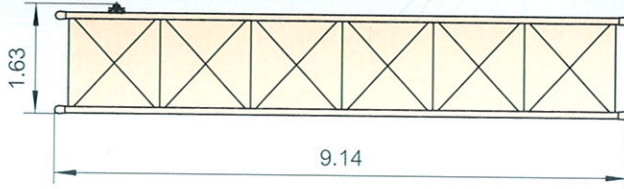
Boom top	x1
Length	6.98m
Width	1.61m
Height	1.72m
Weight	1680kg



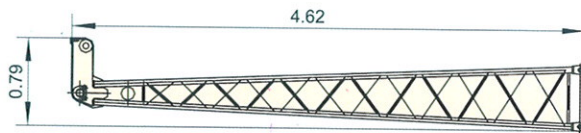
3m section	x1
Length	3.14m
Width	1.61m
Height	1.71m
Weight	523kg



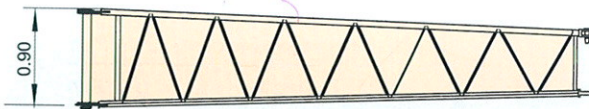
6m section	x1
Length	6.14m
Width	1.61m
Height	1.63m
Weight	844kg



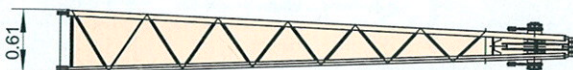
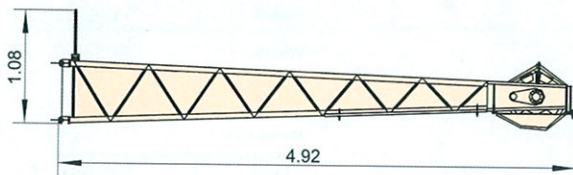
9m section	x4
Length	9.14m
Width	1.61m
Height	1.63m
Weight	1150kg



Jib foot	x1
Length	4.62m
Width	0.90m
Height	0.79m
Weight	223kg

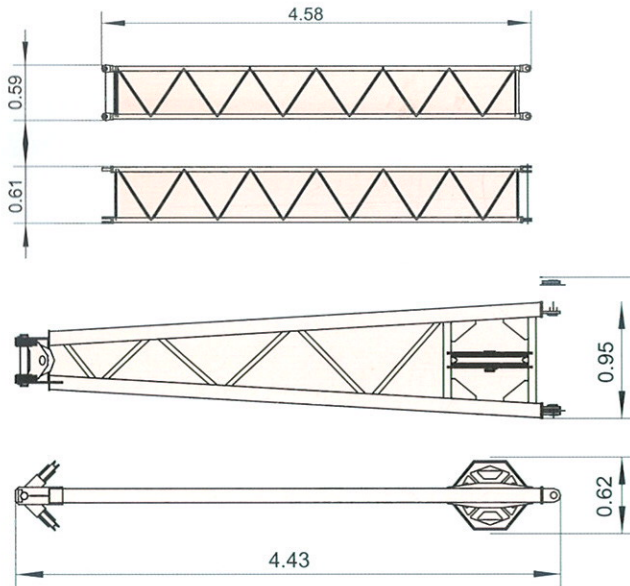


Jip top	x1
Length	4.92m
Width	0.61m
Height	1.08m
Weight	277kg



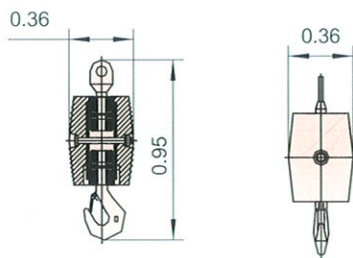
## Dimensions for Transportation

Unit: m

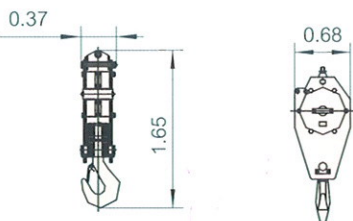


<b>4.5m jib insert</b>	<b>x2</b>
Length	4.58m
Width	0.61m
Height	0.59m
Weight	133kg

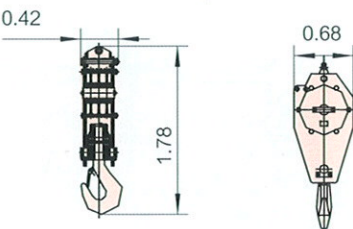
<b>Jib mast</b>	<b>x1</b>
Length	4.43m
Width	0.95m
Height	0.62m
Weight	322kg



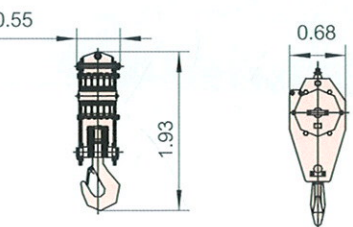
<b>8t hook</b>	<b>x1</b>
Length	0.95m
Width	0.36m
Height	0.36m
Weight	238kg



<b>25t hook</b>	<b>x1</b>
Length	1.65m
Width	0.68m
Height	0.37m
Weight	435kg



<b>50t hook</b>	<b>x1</b>
Length	1.78m
Width	0.68m
Height	0.42m
Weight	664kg



<b>80t hook</b>	<b>x1</b>
Length	1.93m
Width	0.68m
Height	0.55m
Weight	1030kg