

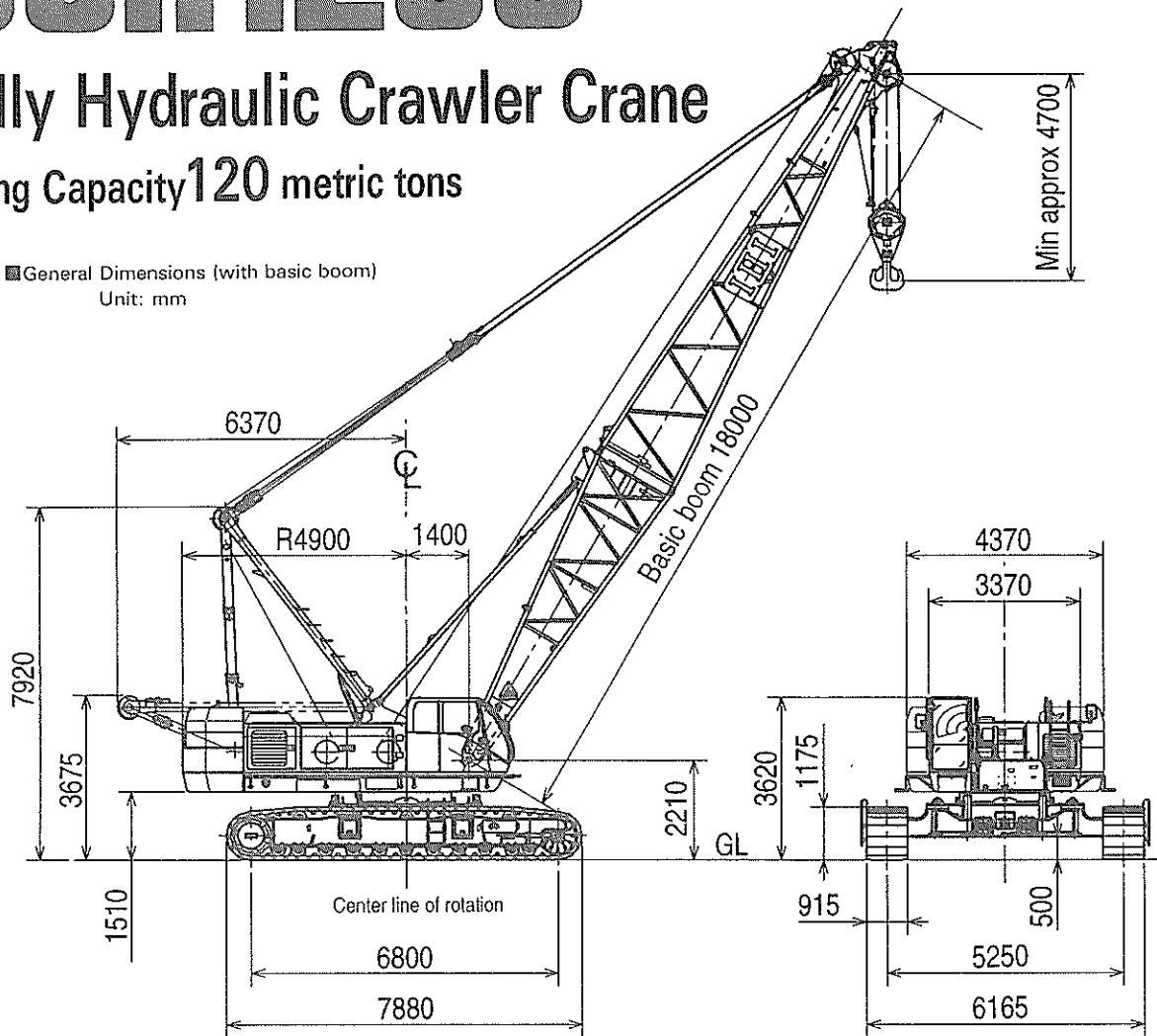
# CCH1200

IHI

## Fully Hydraulic Crawler Crane

Lifting Capacity 120 metric tons

■ General Dimensions (with basic boom)  
Unit: mm



### ■ Specifications

Performance	
Swing speed	2.2 rpm
Travel speed	* 1.5/1.0 km/h (0.93/0.62 mph)
Gradeability	30% (Approx. 16.7° with 18m Boom and 120ton hook block)
Engine	
Make	HINO MOTOR
Model	K13TJ(with turbo) diesel engine 4-cycle, water cooled, overhead valve
Type	Direct injection diesel engine
Total piston displacement	12,882 cc
Rated output	320 PS/2000 rpm
Fuel tank capacity	450 L
Battery	12 V×150 AH×2 pcs.
Load hoist system (Main & Aux.)	
Hydraulic motor	Variable displacement axial piston type
Reduction gear	Two-stage planetary gear and single stage spur gear
Hoist drum	Tandem drums driven independently by hydraulic motor, lagging type with lebus grooved drum.
Clutch	Internal expanding band type
Brake	External contracting type
Drum lock	Ratchet lock
Hydraulic pump	Variable displacement axial piston type×2 Gear pump×3
Boom hoist system	
Motor	Axial piston type
Reduction gear	One stage planetary gear + One stage spur gear
Hoist drum	Lebus grooved drum
Brake	Automatic spring - loaded hydraulically released wet type multi-disk
Drum lock	Ratchet lock

\* Travel speed changes depending on the load.

### ■ Standard Equipment

- Instrument for crane
  - Engine tachometer (Hour meter)
  - Hydraulic oil pressure gauge (for control circuit)
  - Fuel level gauge
  - Engine coolant thermo indicator
  - Engine oil pressure indicator
  - Hydraulic oil thermo indicator
- Lighting for crane
  - 2-work light (24v × 80w)
  - 1-Room light (24v × 10w)
- Safety device
  - Automatic stop for hook overwinding
  - Automatic stop for boom overwinding
  - Telescopic boom limit stop
  - Swing lock
  - Main and auxiliary drum lock
  - Boom hoist drum lock
  - 2nd. boom stop device (82 non-resettable)
  - Clutch engage pin on main and auxiliary winch
  - Safety valve for hydraulic circuit
  - Counter balance valve
  - Control lever locking device
- Other standard accessories
  - Front windshield wipers (intermittent, w/washer)
  - Roof wipers (intermittent, w/washer)
  - Sunvisor
  - Sun shade
  - Storage pouch
  - Tool box
  - Reclining operator's seat
  - Floor mat
- Jack device for dismantling
- Lateral cylinders for dismantling crawler
- Steps for operator's cab
- Radio
- Cigarette lighter
- Ash tray
- Large rear view mirrors (right/left)
- Signal horn
- Electric fuel filling pump
- Swing warning flasher
- Travel warning flasher
- High "A" frame erecting device
- Low-noise cab
- Blonze tinted glass
- Wire mesh boom workway (for inner boom)
- Foot rest
- Electric type engine throttle
- Foot pedal-type engine throttle
- Automatic engine throttle deceleration
- Ultra low speed control
- Hydraulic assist brake for main and aux. winch
- Winch mode selector for main and aux. winch
- Rope guide roller on outer boom
- Plug socket
- Hoist drum mirror and light
- Catwalk
- Boom foot pin cylinder
- Operator's cab sliding device
- Loud speaker
- Emergency engine stop switch
- OK monitor

## Specifications

Max. Lifting capacity × working radius		120 metric tons × 5.0m
Max. boom length		75m
Max. boom length, (main + jib)		88m (63m boom + 25m jib)
Rope speed	Main drum hoist / lowering	* 100~50/50~25 m/min
	Aux. drum hoist / lowering	* 100~50/50~25 m/min
	Boom drum hoist / lowering	* 60~30 m/min
Part line	Hook block capacity×Part line	120ton×10
	Hook block capacity×Part line	11 ton×1
	Boom drum hoist/lowering part line	14
Counterweight		50ton
Total operating weight (with 18m boom)		121.5ton (Approx.)
Average ground bearing pressure		0.92kgf/cm <sup>2</sup>

\* The rope speed changes depending on the load.

## Combination of Boom and Jib (●: Available combination)

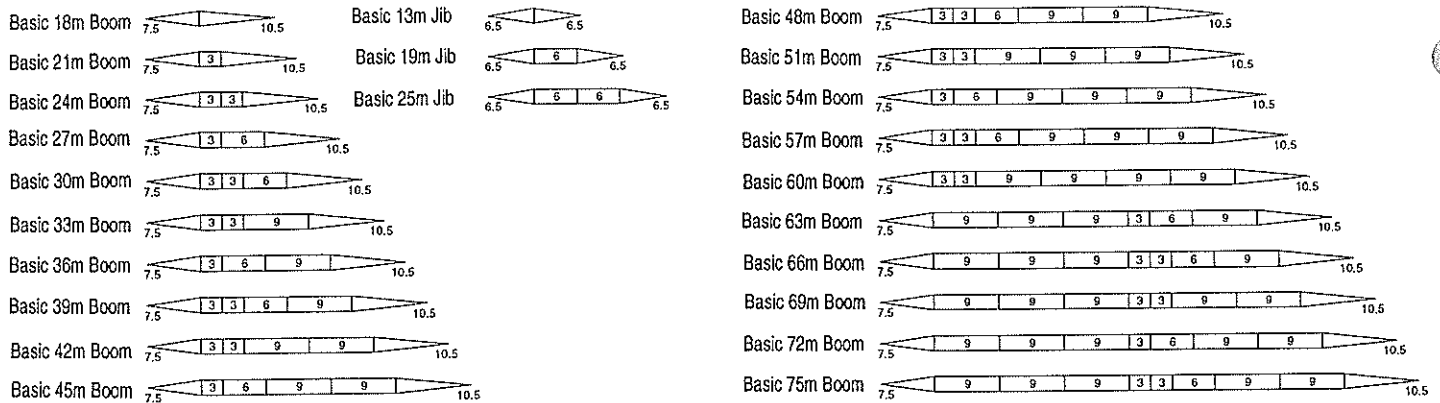
Jib length (m)	Boom length (m)																	
	18-24	27	30	33	36	39	42	45	48	51	54	57	60	63	66	69	72	75
Auxiliary	●	●	●	●	●	●	●	●	●	●	●	●	●	●	●	●	●	●
13		●	●	●	●	●	●	●	●	●	●	●	●	●	●	●	●	●
19			●	●	●	●	●	●	●	●	●	●	●	●	●	●	●	●
25				●	●	●	●	●	●	●	●	●	●	●	●	●	●	●

## Wire Rope

Place of use	Rope diameter (mm)	Guaranteed strength (ton)	rope type
Load hoist	φ 26	61.0	A
Boom hoist	φ 22	36.3	B
Boom suspension	φ 31.5	74.9	C
Jib load hoist	φ 26	61.0	A
Jib Boom suspension	φ 28	59.3	C
Jib strut suspension	φ 28	59.3	C

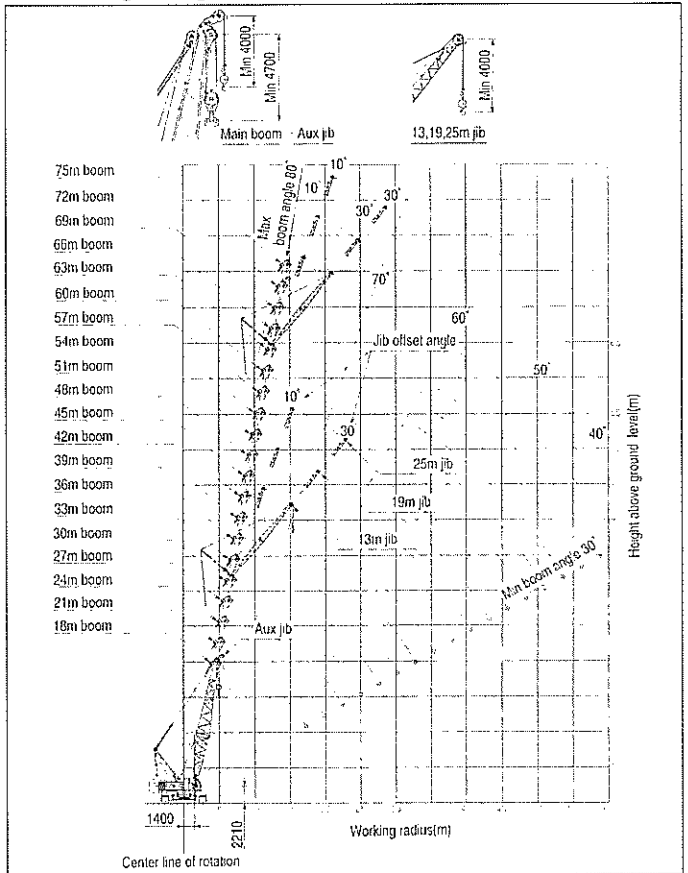
Rope type A: PS(19)+39×P-7  
 B: IWRC 6×WS(31)  
 C: IWRC 6×F(29)

## Boom & Jib Combination



Note: 1. Compositions shown are for maximum length at time of delivery.  
 2. Required middle suspension for boom length 63m and longer.  
 3. Boom can be converted into a post for tower crane operation by replacing top section.

## Working Range (No-loaded condition)



## ■ Main boom rated lifting loads

(Unit : metric ton)

Boom length(m) Working radius(m)	18.0	21.0	24.0	27.0	30.0	33.0	36.0	39.0	42.0	45.0	48.0	51.0	54.0	57.0	60.0	63.0	66.0	69.0	72.0	75.0	
5.0	120.0																				
5.5	106.7	90.0																			
6.0	97.0	80.0	80.0	70.0																	
7.0	83.3	81.2	75.0	7.2m×70.0	7.1m×60.0	7.6m×50.0															
8.0	71.7	71.5	67.5	64.0	60.0	50.0	8.1m×50.0	8.6m×40.0													
9.0	60.6	60.0	59.7	57.5	54.1	9.5m×50.0	50.0	40.0	9.2m×40.0	9.7m×40.0											
10.0	51.8	51.6	51.5	51.0	48.8	47.4	46.0	11.3m×40.0	11.2m×40.0	11.0m×40.0	10.2m×30.0	10.7m×30.0	11.2m×28.3	11.8m×28.1							
12.0	40.6	40.4	40.3	40.2	40.0	39.2	38.4	37.8	37.5	37.1	30.0	30.0	28.3	28.1	12.3m×20.0	12.8m×20.0	13.3m×19.0	13.8m×16.0			
14.0	32.9	32.7	32.6	32.5	32.3	32.2	32.1	31.9	31.8	31.7	14.1m×30.0	30.0	28.3	28.1	20.0	20.0	19.0	16.0	14.4m×14.5	14.9m×13.0	
16.0	27.6	27.4	27.3	27.2	27.0	26.9	26.8	26.6	26.5	26.4	26.3	26.2	25.1	24.9	20.0	17.4m×20.0	19.0	16.0	14.5	13.0	
18.0	17.2m×25.1	23.4	23.3	23.2	23.0	22.9	22.8	22.6	22.5	22.4	22.3	22.2	22.0	21.9	20.0	19.2	17.9	16.0	14.5	13.0	
20.0		19.7m×20.8	20.2	20.1	19.9	19.8	19.7	19.5	19.4	19.3	19.2	19.1	18.9	18.8	18.2	17.5	16.7	15.2	13.6	11.6	
22.0			17.8	17.7	17.5	17.4	17.3	17.1	17.0	16.9	16.8	16.7	16.5	16.4	16.3	15.8	15.3	14.2	12.6	10.4	
24.0			22.3m×17.5	15.8	15.6	15.5	15.4	15.2	15.1	15.0	14.9	14.8	14.6	14.5	14.4	14.2	13.8	13.0	11.6	9.4	
26.0				24.9m×15.0	13.9	13.8	13.7	13.5	13.4	13.3	13.2	13.1	12.9	12.8	12.7	12.5	12.3	11.9	10.5	8.4	
28.0					27.5m×12.9	12.5	12.4	12.2	12.1	12.0	11.9	11.8	11.6	11.5	11.4	11.2	11.0	10.9	9.6	7.6	
30.0						11.3	11.2	11.0	10.9	10.8	10.7	10.6	10.4	10.3	10.2	10.0	9.8	9.7	8.7	6.9	
32.0						30.1m×11.2	10.2	10.0	9.9	9.8	9.7	9.6	9.4	9.3	9.2	9.0	8.8	8.6	7.8	6.2	
34.0							32.7m×9.9	9.1	9.0	8.9	8.8	8.7	8.5	8.4	8.3	8.1	7.9	7.6	7.1	5.5	
36.0								35.3m×8.6	8.2	8.1	8.0	7.9	7.7	7.6	7.5	7.3	7.1	6.7	6.4	5.0	
38.0									37.9m×7.6	7.4	7.3	7.2	7.0	6.9	6.8	6.6	6.4	5.9	5.7	4.4	
40.0										6.8	6.7	6.6	6.4	6.3	6.2	6.0	5.8	5.2	5.0	3.9	
42.0										40.5m×6.7	6.2	6.1	5.9	5.8	5.7	5.5	5.3	4.6	4.4	3.5	
44.0											43.1m×5.9	5.6	5.4	5.3	5.2	5.0	4.8	4.2	3.9	3.0	
46.0												45.7m×5.2	4.9	4.8	4.7	4.5	4.3	3.7	3.4	2.6	
48.0													4.5	4.4	4.3	4.1	3.8	3.2	2.9	2.2	
50.0													48.3m×4.5	4.0	3.9	3.7	3.4	2.8	2.4		
52.0														50.9m×3.9	3.6	3.4	2.9	2.4	2.0		
54.0															53.5m×3.4	3.1	2.5	2.0			

### Notes

- Above rated loads are based on firm level ground, within 78% of tipping load at any point 360 throughout and with front stability of 1.15 or more.
  - Working radius is horizontal distance from center of rotation to a vertical line through the center of gravity of the load.
  - The weight of the slings, hook block(s) and auxiliary lifting devices must be considered to be part of the load.
- Hook block  
 120ton capacity---1.60ton    60ton capacity---1.15ton  
 50ton capacity---0.95ton    30ton capacity---0.75ton  
 11ton capacity---0.40ton

4. Jib boom can be fitted to main boom in the following combinations.

Jib length(m)	Auxiliary	13.0	19.0	25.0
Boom length(m)	18.0~72.0	30.0~63.0	30.0~63.0	30.0~63.0

5. When jib boom is fitted actual loads that can be lifted with main hook block should be reduced according to the above chart (the weights include that of the auxiliary hook block).

Jib length(m)	Auxiliary	13.0	19.0	25.0
Weight to be deducted(ton)	0.70	2.80	3.30	3.90

6. High "A" Frame should be extended before working.

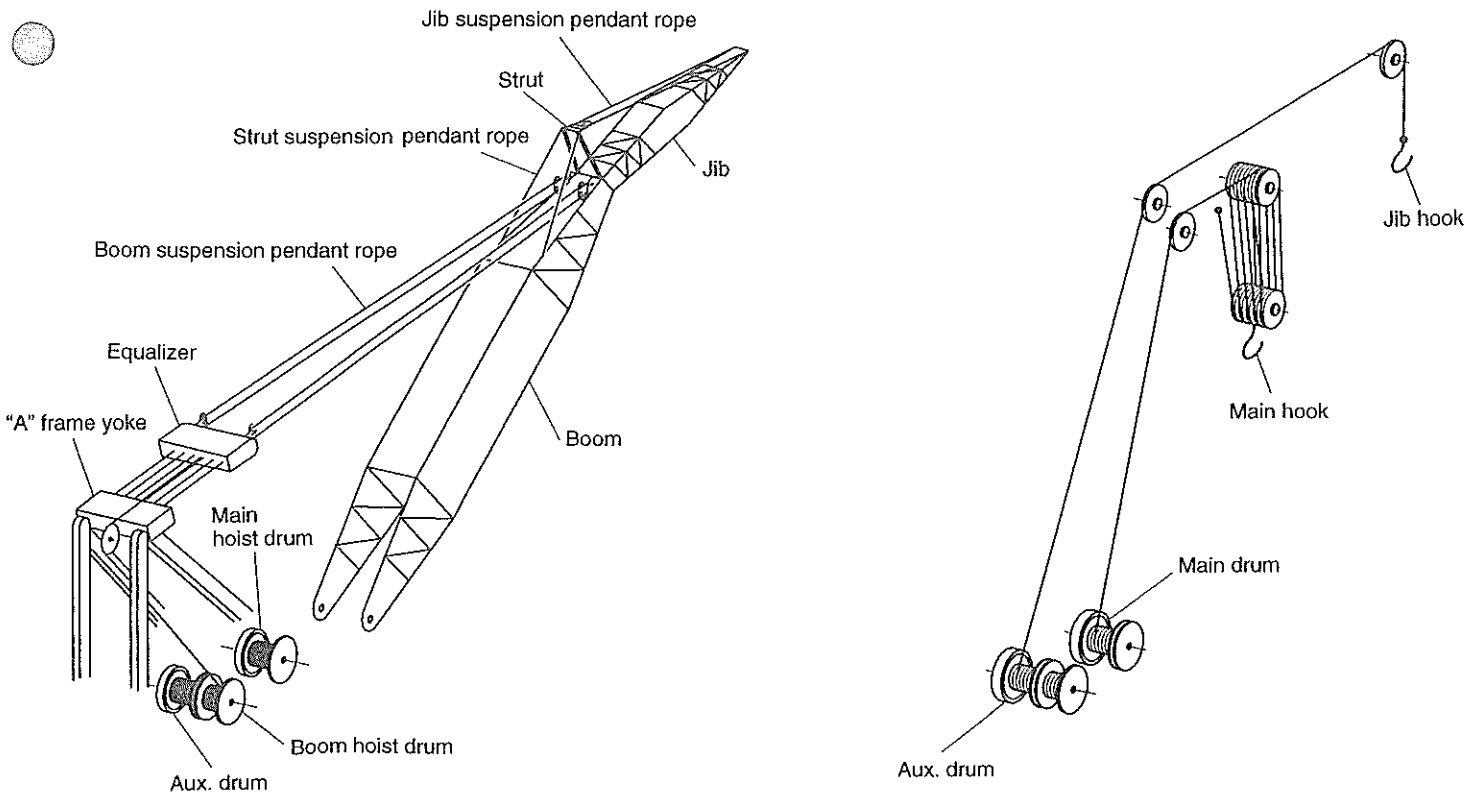
7. The rated loads for the Auxiliary jib must be reduced 0.7 ton from same radius of rated lifting loads of the main boom which installed the jib.  
 The rated loads for the 13m jib~25m jib are same as main boom's one which installed jib (Ref. Jib rated lifting loads).  
 However do not exceed below limit.

Jib length(m)	Auxiliary	13.0	19.0	25.0			
Jib offset angle	—	10	30	10	30	10	30
Limited loads(ton)	11.0	11.0	8.5	10.0	6.5	6.5	4.5

8. The rated load for Jib when the main hook is installed must be reduced by the total weight of the main hook and jib hook.

9. Depending on the number of part lines, rated lifting load is limited as follows.

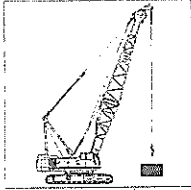
- |                               |                                |
|-------------------------------|--------------------------------|
| 1 Part line.....up to 12 ton  | 2 Part line.....up to 24 ton   |
| 3 Part line.....up to 36 ton  | 4 Part line.....up to 48 ton   |
| 5 Part line.....up to 60 ton  | 6 Part line.....up to 72 ton   |
| 7 Part line.....up to 84 ton  | 8 Part line.....up to 96 ton   |
| 9 Part line.....up to 108 ton | 10 Part line.....up to 120 ton |
10. Rated loads shown in bold lines are based on structural strength factors.



## ■ Auxiliary jib rated lifting loads

(Unit : metric ton)

Boom length(m) Working radius(m)	18.0	21.0	24.0	27.0	30.0	33.0	36.0	39.0	42.0	45.0	48.0	51.0	54.0	57.0	60.0	63.0	66.0	69.0	72.0		
5.5	5.7m× 11.0																				
6.0	11.0	6.2m× 11.0	6.7m× 11.0																		
7.0	11.0	11.0	11.0	7.2m× 11.0	7.8m× 11.0																
8.0	11.0	11.0	11.0	11.0	11.0	8.3m× 11.0	8.8m× 11.0														
9.0	11.0	11.0	11.0	11.0	11.0	11.0	11.0	9.3m× 11.0	9.8m× 11.0												
10.0	11.0	11.0	11.0	11.0	11.0	11.0	11.0	11.0	11.0	10.4m× 11.0	10.9m× 11.0	11.4m× 11.0	11.9m× 11.0								
12.0	11.0	11.0	11.0	11.0	11.0	11.0	11.0	11.0	11.0	11.0	11.0	11.0	11.0	12.5m× 11.0	13.0m× 11.0	13.5m× 11.0					
14.0	11.0	11.0	11.0	11.0	11.0	11.0	11.0	11.0	11.0	11.0	11.0	11.0	11.0	11.0	11.0	11.0	11.0	11.0	14.6m× 11.0		
16.0	11.0	11.0	11.0	11.0	11.0	11.0	11.0	11.0	11.0	11.0	11.0	11.0	11.0	11.0	11.0	11.0	11.0	11.0	11.0	11.0	15.1m× 11.0
18.0	11.0	11.0	11.0	11.0	11.0	11.0	11.0	11.0	11.0	11.0	11.0	11.0	11.0	11.0	11.0	11.0	11.0	11.0	11.0	11.0	11.0
20.0	18.5m× 11.0	11.0	11.0	11.0	11.0	11.0	11.0	11.0	11.0	11.0	11.0	11.0	11.0	11.0	11.0	11.0	11.0	11.0	11.0	11.0	11.0
22.0		21.1m× 11.0	11.0	11.0	11.0	11.0	11.0	11.0	11.0	11.0	11.0	11.0	11.0	11.0	11.0	11.0	11.0	11.0	11.0	11.0	11.0
24.0			23.7m× 11.0	11.0	11.0	11.0	11.0	11.0	11.0	11.0	11.0	11.0	11.0	11.0	11.0	11.0	11.0	11.0	11.0	11.0	23.8m× 11.0
26.0				11.0	11.0	11.0	11.0	11.0	11.0	11.0	11.0	11.0	11.0	27.7m× 11.0	27.6m× 11.0	27.4m× 11.0	27.1m× 11.0	26.9m× 11.0	26.4m× 11.0	9.8	
28.0				26.3m× 11.0	11.0	29.2m× 11.0	29.0m× 11.0	28.7m× 11.0	28.5m× 11.0	28.4m× 11.0	28.2m× 11.0	11.0	10.9	10.8	10.7	10.5	10.3	10.2	8.9		
30.0					28.9m× 11.0	10.6	10.5	10.3	10.2	10.1	10.0	9.9	9.7	9.6	9.5	9.3	9.1	9.0	8.0		
32.0						31.5m× 9.8	9.5	9.3	9.2	9.1	9.0	8.9	8.7	8.6	8.5	8.3	8.1	7.9	7.1		
34.0							8.6	8.4	8.3	8.2	8.1	8.0	7.8	7.7	7.6	7.4	7.2	6.4			
36.0								7.6	7.5	7.4	7.3	7.2	7.0	6.9	6.8	6.6	6.4	6.0			
38.0									36.6m× 7.4	6.8	6.7	6.6	6.5	6.3	6.2	6.1	5.9	5.7	5.0		
40.0										39.2m× 6.4	6.1	6.0	5.9	5.7	5.6	5.5	5.3	5.1	4.5	4.3	
42.0											41.8m× 5.6	5.5	5.4	5.2	5.1	5.0	4.8	4.6	3.9	3.7	
44.0												5.0	4.9	4.7	4.6	4.5	4.3	4.1	3.5	3.2	
46.0											44.4m× 4.9	4.4	4.2	4.1	4.0	3.8	3.6	3.0	2.7		
48.0												47.0m× 4.2	3.8	3.7	3.6	3.4	3.1	2.5	2.2		
50.0													49.6m× 3.5	3.3	3.2	3.0	2.7	2.1	1.7		
52.0															52.2m× 2.9	2.6	2.4	1.8	1.3		
54.0																					

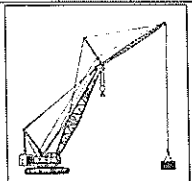


- Notes  
 1. Above rated loads are based on firm level ground, within 78% of tipping load at any point 360° throughout and with front stability of 1.15 or more.  
 2. Working radius is horizontal distance from center of rotation to a vertical line through the center of gravity of the load.

3. When the main hook block is installed, the lifting loads of jib must be reduced by the weight of hook block (main and jib) and other lifting devices.  
 120ton hook block...1.60ton  
 50ton hook block...0.95ton  
 11ton hook block...0.40ton  
 60ton hook block...1.15ton  
 30ton hook block...0.75ton

## ■ Jib rated lifting loads

Boom length(m) Jib length(m) Offset angle Working radius(m)	30.0						42.0						63.0							
	13.0		19.0		25.0		13.0		19.0		25.0		13.0		19.0		25.0			
	10°	30°	10°	30°	10°	30°	10°	30°	10°	30°	10°	30°	10°	30°	10°	30°	10°	30°		
9.0																				
10.0	11.3m× 11.0																			
12.0	11.0		13.4m× 10.0				13.4m× 11.0													
14.0	11.0	15.0m× 8.5	10.0		14.9m× 9.5		11.0		15.5m× 10.0											
16.0	11.0	8.5	10.0		5.5		11.0	17.1m× 8.5	10.0		17.0m× 6.5			17.0m× 11.0						
18.0	11.0	8.5	10.0	18.9m× 6.5	5.5		11.0	8.5	10.0		5.5		11.0		19.1m× 10.0					
20.0	11.0	8.5	10.0	6.5	5.5		11.0	8.5	10.0	21.0m× 6.5	5.5		11.0	20.8m× 8.5	10.0			20.7m× 5.5		
22.0	11.0	8.5	10.0	6.5	5.5	22.3m× 4.5	11.0	8.5	10.0	6.5	5.5		11.0	8.5	10.0			5.5		
24.0	11.0	8.5	10.0	6.5	5.5	4.5	11.0	8.5	10.0	6.5	5.5	24.3m× 4.5	11.0	8.5	10.0	24.6m× 8.5	5.5			
26.0	11.0	8.5	10.0	6.5	5.5	4.5	11.0	8.5	10.0	6.5	5.5	4.5	11.0	8.5	10.0	6.5	5.5	4.5		
28.0	11.0	8.5	10.0	6.5	5.5	4.5	29.8m× 11.0	8.5	10.0	6.5	5.5	4.5	28.3m× 11.0	8.5	10.0	6.5	5.5	4.5		
30.0	30.7m× 11.0	8.5	10.0	6.5	5.5	4.5	10.9	8.5	31.7m× 10.0	6.5	5.5	4.5	10.0	8.5	10.0	6.5	5.5	4.5		
32.0	10.4	8.5	32.8m× 10.0	6.5	5.5	4.5	9.9	8.5	9.9	6.5	5.5	4.5	9.0	33.1m× 8.5	9.0	6.5	5.5	4.5		
34.0	9.5	8.5	9.5	6.5	5.5	4.5	9.0	35.3m× 8.5	9.0	6.5	5.5	4.5	8.1	8.1	8.1	6.5	5.5	4.5		
36.0	8.7	36.6m× 8.5	8.7	6.5	5.5	4.5	8.2	8.2	8.2	6.5	5.5	4.5	7.3	7.3	7.3	6.5	5.5	4.5		
38.0	8.0	8.0	8.0	6.5	5.5	4.5	7.5	7.5	7.5	6.5	5.5	4.5	6.6	6.6	6.6	6.6	6.6	6.6	5.5	4.5
40.0	7.4	7.4	7.4	6.5	5.5	4.5	6.9	6.9	6.9	6.5	5.5	4.5	6.0	6.0	6.0	6.0	6.0	6.0	5.5	4.5
42.0	40.1m× 7.4	41.1m× 7.1	6.9	43.5m× 6.5	5.5	4.5	6.4	6.4	6.4	6.4	5.5	4.5	5.5	5.5	5.5	5.5	5.5	5.5	5.5	4.5
44.0			6.4	6.4	5.5	4.5	5.9	5.9	5.9	5.9	5.9	45.6m× 5.5	4.5	5.0	5.0	5.0	5.0	5.0	5.0	4.5
46.0			45.8m× 6.0	5.9	5.5	4.5	5.4	5.4	5.4	5.4	5.4	5.4	4.5	4.5	4.5	4.5	4.5	4.5	4.5	4.5
48.0				47.1m× 5.7	5.5	4.5	5.0	5.0	5.0	5.0	5.0	5.0	4.5	4.1	4.1	4.1	4.1	4.1	4.1	4.1
50.0					5.1	4.5	4.6	4.6	4.6	4.6	4.6	4.6	50.7m× 4.5	3.7	3.7	3.7	3.7	3.7	3.7	3.7
52.0					51.2m× 4.9	4.5	50.5m× 4.5	51.5m× 4.4	4.3	4.3	4.3	4.3	4.3	3.4	3.4	3.4	3.4	3.4	3.4	3.4
54.0						53.1m× 4.5			4.0	4.0	4.0	4.0	3.1	3.1	3.1	3.1	3.1	3.1	3.1	3.1
56.0									3.6	3.6	3.6	3.6	2.7	2.7	2.7	2.7	2.7	2.7	2.7	2.7
58.0									56.2m× 3.5	57.5m× 3.4	3.3	3.3	2.4	2.4	2.4	2.4	2.4	2.4	2.4	2.4
60.0											3.0	3.0	2.1	2.1	2.1	2.1	2.1	2.1	2.1	2.1



- Notes  
 1. Above rated loads are based on firm level ground, within 78% of tipping load at any point 360° throughout and with front stability of 1.15 or more.  
 2. Working radius is horizontal distance from center of rotation to a vertical line through the center of gravity of the load.

3. When the main hook block is installed, the lifting loads of jib must be reduced by the weight of hook block (main and jib) and other lifting devices.  
 120ton hook block...1.60ton  
 50ton hook block...0.95ton  
 11ton hook block...0.40ton  
 60ton hook block...1.15ton  
 30ton hook block...0.75ton

# Luffing Jib Crane

CC1200

## Specifications

Max. lifting capacity × working radius		at Post	40metric tons × 10.8m
		at Jib	20metric tons × 14.0m
Max. lift above ground level			
92m (51.25m post + 44m jib)			
Rope speed	Main drum hoist/lowering	*100~50/50~25m/min	
	Aux. drum hoist/lowering	*100~50/50~25m/min	
	Post hoist/lowering	*60~30m/min	
	Jib hoist/lowering	*60~30m/min	
Part line	at Post	Hook block capacity × Part line	40ton × 4
		Hook block capacity × Part line	20ton × 2
	at Jib	Hook block capacity × Part line	20ton × 2
		Hook block capacity × Part line	11ton × 1
	Post hoist	14	
Jib hoist	8		
Counterweight			
50ton			
Total operating weight (with 51.25m post + 40ton hook + 44m jib + 20ton hook)			
137.9ton			
Average ground bearing pressure			
1.04kgf/cm <sup>2</sup>			

Note: The rope speed changes depending on the load.

## Combination of post and jib

Jib length (m)	Post length(m)																	
	18.25	21.25	24.25	27.25	30.25	33.25	36.25	39.25	42.25	45.25	48.25	51.25	54.25	57.25	60.25	63.25	66.25	
23				⊙	⊙	⊙	⊙	⊙	⊙	⊙	⊙	⊙						
26				⊙	⊙	⊙	⊙	⊙	⊙	⊙	⊙	⊙						
29				⊙	⊙	⊙	⊙	⊙	⊙	⊙	⊙	⊙						
32				⊙	⊙	⊙	⊙	⊙	⊙	⊙	⊙	⊙						
35				⊙	⊙	⊙	⊙	⊙	⊙	⊙	⊙	⊙						
38				⊙	⊙	⊙	⊙	⊙	⊙	⊙	⊙	⊙						
41				⊙	⊙	⊙	⊙	⊙	⊙	⊙	⊙	⊙						
44				⊙	⊙	⊙	⊙	⊙	⊙	⊙	⊙	⊙						

Note: ⊙: Possible combinations.

## Wire rope

Place of use	Rope diameter (mm)	Guaranteed strength(t)	Rope type
Main drum	φ26	61.0	PS(19)+39×P-7
Aux. drum	φ26	61.0	PS(19)+39×P-7
Post hoist	φ22	36.3	IWRC6×WS(31)
Jib hoist	φ26	57.8	IWRC6×WS(31)
Post suspension	φ31.5	74.9	IWRC6×Fi(29)
Jib suspension	φ34	86.7	IWRC6×Fi(29)
Strut suspension	φ34	86.7	IWRC6×Fi(29)

Note: wire rope length to be decided according to the ordered boom length.

## Post Composition

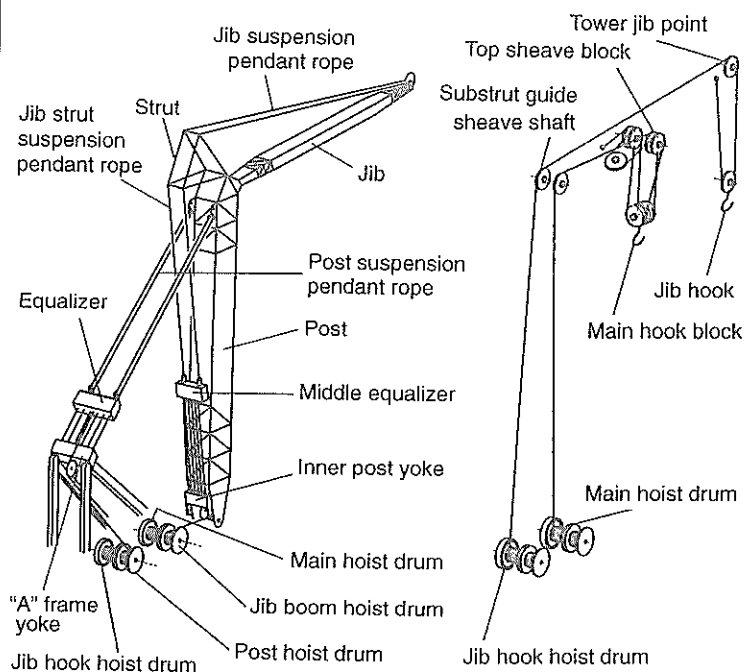
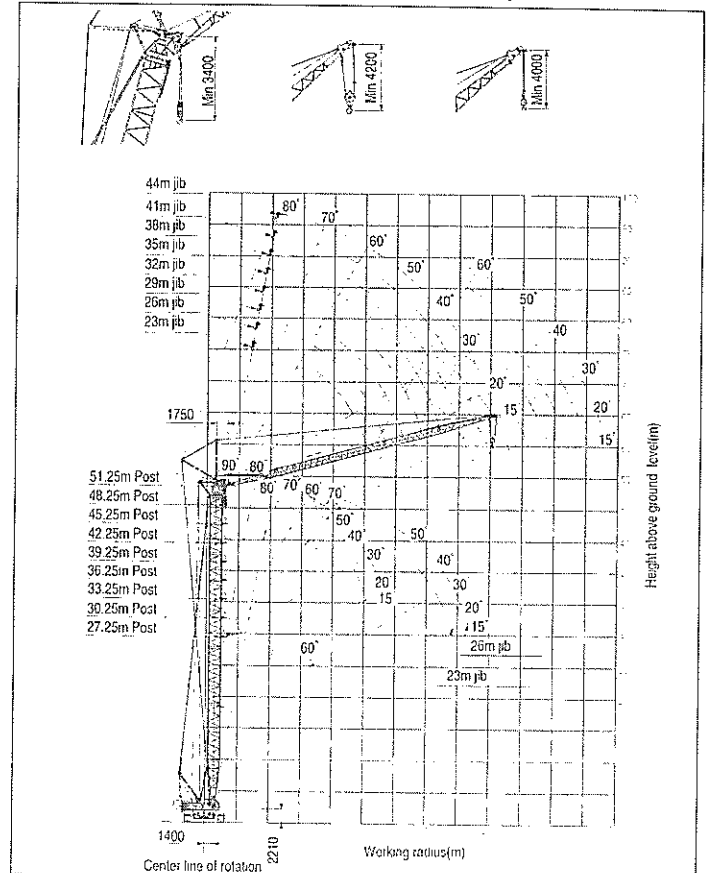
Post length(m)	Post composition(m)
18.25	7.5(inner)+9.0+1.75(outer)
21.25	7.5+9.0+3.0+1.75
24.25	7.5+9.0+6.0+1.75
27.25	7.5+9.0+9.0+1.75
30.25	7.5+9.0+3.0+9.0+1.75
33.25	7.5+9.0+6.0+9.0+1.75
36.25	7.5+9.0+9.0+9.0+1.75
39.25	7.5+9.0+3.0+9.0+9.0+1.75
42.25	7.5+9.0+6.0+9.0+9.0+1.75
45.25	7.5+9.0+3.0+6.0+9.0+9.0+1.75
48.25	7.5+9.0+6.0+6.0+9.0+9.0+1.75
51.25	7.5+9.0+3.0+6.0+6.0+9.0+9.0+1.75
54.25	7.5+9.0+3.0+6.0+9.0+9.0+9.0+1.75
57.25	7.5+9.0+3.0+3.0+6.0+9.0+9.0+9.0+1.75
60.25	7.5+9.0+3.0+6.0+6.0+9.0+9.0+9.0+1.75
63.25	7.5+9.0+3.0+6.0+9.0+9.0+9.0+9.0+1.75
66.25	7.5+9.0+3.0+3.0+6.0+9.0+9.0+9.0+9.0+1.75

Notes  
 1. 9.0m insert post\*9.0 is installed to the middle equalizer guide rail and load hoist guide sheave.  
 2. 3.0m~9.0m insert post including jib strut suspension pendant rope.  
 3. Required middle suspension for post length 54.25 m and long.

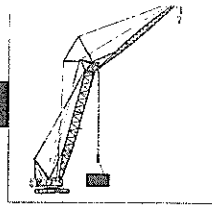
## Jib Composition

Jib length(m)	Jib composition(m)
23	8.0(inner)+6.0+9.0(outer)
26	8.0+3+6+9.0
29	8.0+3+9+9.0
32	8.0+6+9+9.0
35	8.0+9+9+9.0
38	8.0+3+9+9+9.0
41	8.0+6+9+9+9.0
44	8.0+3+6+9+9+9.0

## Working range (No-loaded condition)



# Luffing Jib Crane



CCHT200

## ■ Post rated lifting loads

(Unit : metric ton)

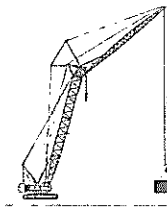
Post length(m)	27.25									33.25											
	Jib length(m)			23.0			26.0			23.0			26.0			29.0			32.0		
	Post angle	Working radius(m)		10~20'		20~40'		40~'		10~20'		20~40'		40~'		10~20'		20~40'		40~'	
5.0	5.2m×40.0	5.2m×40.0	5.2m×40.0	5.2m×40.0	5.2m×40.0	5.2m×40.0	5.2m×40.0	5.8m×40.0	5.8m×40.0	5.8m×40.0	5.8m×40.0	5.8m×40.0	5.8m×40.0	5.8m×40.0	5.8m×40.0	5.8m×40.0	5.8m×40.0	5.8m×40.0	5.8m×40.0	5.8m×40.0	
6.0	40.0	40.0	40.0	40.0	40.0	40.0	40.0	40.0	40.0	40.0	40.0	40.0	40.0	40.0	40.0	40.0	40.0	40.0	40.0	40.0	
7.0	40.0	40.0	40.0	40.0	40.0	40.0	40.0	40.0	40.0	40.0	40.0	40.0	40.0	40.0	40.0	40.0	40.0	40.0	40.0	40.0	
8.0	40.0	40.0	40.0	40.0	40.0	40.0	40.0	40.0	40.0	40.0	40.0	40.0	40.0	40.0	40.0	40.0	40.0	40.0	40.0	40.0	
9.0	40.0	40.0	40.0	40.0	40.0	40.0	40.0	40.0	40.0	40.0	40.0	40.0	40.0	40.0	40.0	40.0	40.0	40.0	40.0	40.0	
10.0	10.8m×40.0	10.7m×40.0	10.7m×40.0	10.7m×40.0	10.6m×40.0	10.6m×40.0	10.8m×40.0	10.8m×40.0	10.7m×40.0	10.7m×40.0	10.7m×40.0	10.6m×40.0	10.6m×40.0	10.6m×40.0	10.5m×40.0	10.5m×40.0	10.5m×40.0	10.5m×40.0	10.4m×40.0	10.3m×40.0	
12.0	33.0	32.6	32.5	32.4	32.1	31.9	32.8	32.4	32.3	32.2	31.9	31.7	31.6	31.3	31.0	31.0	30.6	29.9			
14.0	25.3	24.9	24.8	24.7	24.4	24.2	25.1	24.7	24.6	24.5	24.2	24.0	23.9	23.6	23.3	23.3	22.9	22.2			
16.0	19.9	19.5	19.4	19.3	19.0	18.8	19.7	19.3	19.2	19.1	18.8	18.6	18.5	18.2	17.9	17.9	17.5	16.8			
18.0	16.0	15.6	15.5	15.4	15.1	14.9	15.7	15.3	15.2	15.1	14.8	14.6	14.5	14.2	13.9	13.9	13.5	12.8			
20.0	12.9	12.5	12.4	12.3	12.0	11.8	12.7	12.3	12.2	12.1	11.8	11.6	11.5	11.2	10.9	10.9	10.5	9.8			
22.0	10.5	10.1	10.0	9.9	9.6	9.4	10.3	9.9	9.8	9.7	9.4	9.2	9.1	8.8	8.5	8.5	8.1	7.4			
24.0	8.5	8.1	8.0	7.9	7.6	7.4	8.3	7.9	7.8	7.7	7.4	7.2	7.1	6.8	6.5	6.5	6.1	5.4			
26.0	6.9	6.5	6.4	6.3	6.0	5.8	6.7	6.3	6.2	6.1	5.8	5.6	5.5	5.2	4.9	4.9	4.5	3.8			
28.0	26.3m×6.7	26.3m×6.7	26.3m×6.2	26.3m×6.1	26.3m×5.8	26.3m×5.6	5.3	4.9	4.8	4.7	4.4	4.2	4.1	3.8	3.5	3.5	3.1	2.4			
30.0							4.1	3.7	3.6	3.5	3.2	3.0	2.9	2.6	2.3	2.3					
32.0							31.5m×3.4	31.5m×3.0	31.5m×2.9	31.5m×2.8	31.5m×2.5	31.5m×2.3	31.5m×2.2								

Post length(m)	39.25																				
	Jib length(m)			23.0			26.0			29.0			32.0			35.0			38.0		
	Post angle	Working radius(m)		10~20'		20~40'		40~'		10~20'		20~40'		40~'		10~20'		20~40'		40~'	
5.0																					
6.0	6.3m×40.0	6.3m×40.0	6.3m×40.0	6.3m×40.0	6.3m×40.0	6.3m×40.0	6.3m×40.0	6.3m×40.0	6.3m×40.0	6.3m×40.0	6.3m×40.0	6.3m×40.0	6.3m×40.0	6.3m×40.0	6.3m×40.0	6.3m×40.0	6.3m×40.0	6.3m×40.0	6.3m×40.0	6.3m×40.0	
7.0	40.0	40.0	40.0	40.0	40.0	40.0	40.0	40.0	40.0	40.0	40.0	40.0	40.0	40.0	40.0	40.0	40.0	40.0	40.0	40.0	
8.0	40.0	40.0	40.0	40.0	40.0	40.0	40.0	40.0	40.0	40.0	40.0	40.0	40.0	40.0	40.0	40.0	40.0	40.0	40.0	40.0	
9.0	40.0	40.0	40.0	40.0	40.0	40.0	40.0	40.0	40.0	40.0	40.0	40.0	40.0	40.0	40.0	40.0	40.0	40.0	40.0	40.0	
10.0	10.7m×40.0	10.7m×40.0	10.7m×40.0	10.6m×40.0	10.6m×40.0	10.6m×40.0	10.5m×40.0	10.5m×40.0	10.5m×40.0	10.5m×40.0	10.4m×40.0	10.3m×40.0	10.4m×40.0	10.3m×40.0	10.1m×40.0	10.3m×40.0	10.2m×40.0	9.9m×40.0			
12.0	32.6	32.2	32.1	32.0	31.7	31.5	31.4	31.1	30.8	30.8	30.4	29.7	30.2	29.5	28.4	29.6	28.8	27.1			
14.0	24.9	24.5	24.4	24.3	24.0	23.8	23.7	23.4	23.1	23.1	22.7	22.0	22.5	21.8	20.7	21.9	21.1	19.4			
16.0	19.5	19.1	19.0	18.9	18.6	18.4	18.3	18.0	17.7	17.7	17.3	16.6	17.1	16.4	15.3	16.5	15.7	14.0			
18.0	15.5	15.1	15.0	14.9	14.6	14.4	14.3	14.0	13.7	13.7	13.3	12.6	13.1	12.4	11.3	12.5	11.7	10.0			
20.0	12.5	12.1	12.0	11.9	11.6	11.4	11.3	11.0	10.7	10.7	10.3	9.6	10.1	9.4	8.3	9.5	8.7	7.0			
22.0	10.0	9.6	9.5	9.4	9.1	8.9	8.8	8.5	8.2	8.2	7.8	7.1	7.6	6.9	5.8	7.0	6.2	4.5			
24.0	8.1	7.7	7.6	7.5	7.2	7.0	6.9	6.6	6.3	6.3	5.9	5.2	5.7	5.0	3.9	5.1	4.3	2.6			
26.0	6.4	6.0	5.9	5.8	5.5	5.3	5.2	4.9	4.6	4.6	4.2	3.5	4.0	3.3	2.2	3.4	2.6				
28.0	5.1	4.7	4.6	4.5	4.2	4.0	3.9	3.6	3.3	3.3	2.9	2.2	2.7	2.0		2.1					
30.0	3.9	3.5	3.4	3.3	3.0	2.8	2.7	2.4	2.1	2.1											
32.0	2.9	2.5	2.4	2.3	2.0																
34.0	2.0																				

Post length(m)	51.25																										
	Jib length(m)			23.0			26.0			29.0			32.0			35.0			38.0			41.0			44.0		
	Post angle	Working radius(m)		10~20'		20~40'		40~'		10~20'		20~40'		40~'		10~20'		20~40'		40~'		10~20'		20~40'		40~'	
5.0																											
6.0																											
7.0	7.4m×30.0	7.4m×30.0	7.4m×30.0	7.4m×30.0	7.4m×30.0	7.4m×30.0	7.4m×30.0	7.4m×30.0	7.4m×30.0	7.4m×30.0	7.4m×30.0	7.4m×30.0	7.4m×30.0	7.4m×30.0	7.4m×30.0	7.4m×30.0	7.4m×30.0	7.4m×30.0	7.4m×30.0	7.4m×30.0	7.4m×30.0	7.4m×30.0	7.4m×30.0	7.4m×30.0	7.4m×30.0	7.4m×30.0	
8.0	30.0	30.0	30.0	30.0	30.0	30.0	30.0	30.0	30.0	30.0	30.0	30.0	30.0	30.0	30.0	30.0	30.0	30.0	30.0	30.0	30.0	30.0	30.0	30.0	30.0	30.0	
9.0	30.0	30.0	30.0	30.0	30.0	30.0	30.0	30.0	30.0	30.0	30.0	30.0	30.0	30.0	30.0	30.0	30.0	30.0	30.0	30.0	30.0	30.0	30.0	30.0	30.0	30.0	
10.0	30.0	30.0	30.0	30.0	30.0	30.0	30.0	30.0	30.0	30.0	30.0	30.0	30.0	30.0	30.0	30.0	30.0	30.0	30.0	30.0	30.0	30.0	30.0	30.0	30.0	30.0	
12.0	12.5m×30.0	12.4m×30.0	12.4m×30.0	12.3m×30.0	12.3m×30.0	12.3m×30.0	12.2m×30.0	12.1m×30.0	12.1m×30.0	12.0m×30.0	29.3	29.8	29.1	28.0	29.2	28.4	26.7	28.5	27.3	25.4	27.8	26.0	23.4				
14.0	24.5	24.1	24.0	23.9	23.6	23.4	23.3	23.0	22.7	22.7	22.3	21.6	22.1	21.4	20.3	21.5	20.7	19.0	20.8	19.6	17.7	20.1	18.3	15.7			
16.0	19.0	18.6	18.5	18.4	18.1	17.9	17.8	17.5	17.2	17.2	16.8	16.1	16.6	15.9	14.8	16.0	15.2	13.5	15.3	14.1	12.2	14.6	12.8	10.2			
18.0	15.1	14.7	14.6	14.5	14.2	14.0	13.9	13.6	13.3	13.3	12.9	12.2	12.7	12.0	10.9	12.1	11.3	9.6	11.4	10.2	8.3	10.7	8.9	6.3			
20.0	12.0	11.6	11.5	11.4	11.1	10.9	10.8	10.5	10.2	10.2	9.8	9.1	9.6	8.9	7.8	9.0	8.2	6.5	8.3	7.1	5.2	7.6	5.8	3.2			
22.0	9.6	9.2	9.1	9.0	8.7	8.5	8.4	8.1	7.8	7.8	7.4	6.7	7.2	6.5	5.4	6.6	5.8	4.1	5.9	4.7	2.8	5.2	3.4				
24.0	7.6	7.2	7.1	7.0	6.7	6.5	6.4	6.1	5.8	5.8	5.4	4.7	5.2	4.5	3.4	4.6	3.8	2.1	3.9	2.7		3.2					
26.0	5.9	5.5	5.4	5.3	5.0	4.8	4.7	4.4	4.1	4.1	3.7	3.0	3.5	2.8		2.9	2.1		2.2								
28.0	4.6	4.2	4.1	4.0	3.7	3.5	3.4	3.1	2.8	2.8	2.4		2.2														
30.0	3.4	3.0	2.9	2.8	2.5																						

# Luffing Jib Crane

CGH1200



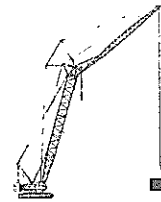
## Jib rated lifting loads

(Unit : metric ton)

Post length(m)	27.25										36.25																								
	23.0					26.0					23.0					26.0					29.0					32.0					35.0				
	90°			75°			60°			90°			75°			60°			90°			75°			60°			90°			75°			60°	
Working radius(m)	90°	75°	60°	90°	75°	60°	90°	75°	60°	90°	75°	60°	90°	75°	60°	90°	75°	60°	90°	75°	60°	90°	75°	60°	90°	75°	60°	90°	75°	60°					
7.2	20.0			7.7mx 18.0			20.0			7.7mx 18.0			8.2mx 16.0			8.8mx 15.2			9.3mx 14.0																
10.0	20.0			18.0			20.0			18.0			16.0			15.2			14.0																
12.0	20.0			18.0			20.0			18.0			16.0			15.2			14.0																
14.0	20.0			18.0			20.0			18.0			16.0			15.2			14.0																
15.0	18.0			18.0			18.0			18.0			16.0			15.2			14.0																
16.0	16.6			16.5			16.6			16.5			16.0			17.0mx 15.2			13.5																
18.0	14.3	19.9mx 12.8		14.3			14.3			14.3			14.3			14.2			12.5																
20.0	12.7	12.7		12.7	21.2mx 11.9		12.7			12.7			12.7			12.7			11.4																
22.0	11.4	11.4		11.4	11.4		11.4	22.2mx 11.3		11.4	23.5mx 10.6		11.4			11.4			10.5																
24.0	10.3	10.3		10.3	10.3		10.3	10.3		10.3	10.3		10.3	24.8mx 9.9		10.3			9.6																
26.0	25.3mx 9.8	9.5		9.4	9.4		25.3mx 9.8	9.5		9.4	9.4		9.4	9.4		9.4	9.4		8.8	27.3mx 8.3															
28.0		9.0		8.8	8.8			9.0		8.8	8.8		8.9	8.9		8.5	8.5		8.1	8.1															
30.0		8.5	31.4mx 8.2	28.2mx 8.8	8.5			8.5		28.2mx 8.7	8.3		8.2	8.2		7.7	7.7		7.4	7.4															
32.0		8.1	8.1		8.2	33.3mx 8.0		8.1			7.9		31.1mx 7.8	7.6		7.0	7.0		6.9	6.9															
34.0		32.3mx 8.0	7.8		7.9	7.9		7.8	35.9mx 7.4		7.6		7.3	7.3		6.6	6.6		6.4	6.4															
36.0			7.3		35.2mx 7.5	7.4		34.6mx 7.7	7.3		7.3	37.9mx 6.9		7.0					6.0	6.0															
38.0			6.6			6.7		6.5		6.5		37.5mx 7.0	6.8		6.7	39.7mx 6.5		5.8		5.7						36.9mx 5.9		5.7							
40.0			38.7mx 6.3			6.3		5.7		5.7		6.0		6.4	6.4		5.5	41.7mx 5.3		5.4															
42.0					41.6mx 6.0			5.1		5.1		5.1		40.4mx 6.3	5.6		5.2	5.2		5.1	43.6mx 4.9														
44.0						4.8		4.4		4.4		4.4			4.7		4.3	4.3		4.8	4.8														
46.0								4.2		4.2		4.2			4.3		4.2	4.2		4.6	4.6														
48.0										46.1mx 4.2					4.0		3.8	3.8		4.6	4.6														
50.0															49.0mx 3.9		3.6	3.6																	
52.0																	51.9mx 3.4																		
54.0																																			
56.0																																			
58.0																																			
60.0																																			

Post length(m)	39.25																																			
	23.0						26.0						29.0						32.0						35.0						38.0					
	90°			75°			60°			90°			75°			60°			90°			75°			60°			90°			75°			60°		
Working radius(m)	90°	75°	60°	90°	75°	60°	90°	75°	60°	90°	75°	60°	90°	75°	60°	90°	75°	60°	90°	75°	60°	90°	75°	60°	90°	75°	60°	90°	75°	60°						
7.2	20.0			7.7mx 18.0			8.2mx 16.0			8.8mx 15.2			9.3mx 14.0			9.8mx 12.0																				
10.0	20.0			18.0			16.0			15.2			14.0			12.0																				
12.0	20.0			18.0			16.0			15.2			14.0			12.0																				
14.0	20.0			18.0			16.0			15.2			14.0			12.0																				
15.0	18.0			18.0			16.0			15.2			14.0			12.0																				
16.0	16.6			16.5			16.0			17.0mx 15.2			13.5			12.0																				
18.0	14.3			14.3			14.3			14.2			12.5			12.0																				
20.0	12.7			12.7			12.7			12.7			11.4			11.1																				
22.0	11.4	23.0mx 10.8		11.4			11.4			11.4			10.5			10.2																				
24.0	10.3	10.3		10.3	24.3mx 10.2		10.3	25.5mx 9.6		10.3			9.6			9.4																				
26.0	25.3mx 9.8	9.5		9.4	9.4		9.4	9.4		9.4	9.4		26.8mx 9.0		8.8			8.6																		
28.0		9.0		8.7	8.7		8.9	8.9		8.5	8.5		8.1	28.1mx 8.0		7.9	29.4mx 7.4																			
30.0		8.5		28.2mx 8.7	8.2		7.9	7.9		7.7	7.7		7.4	7.4		7.2	7.2																			
32.0		8.1			7.7		31.1mx 7.6	7.3		7.0	7.0		6.9	6.9		6.7	6.7																			
34.0		7.8			7.4			6.9		6.6	6.6		6.4	6.4		6.2	6.2																			
36.0		35.4mx 7.5	37.4mx 6.7		7.1			6.6		6.2	6.2		6.0	6.0		5.8	5.8																			
38.0			6.5		6.8	39.3mx 6.3		6.4		5.8	5.8		5.5		5.4		5.4																			
40.0			5.6		38.3mx 6.7	6.0		6.1	41.2mx 5.8		5.5		5.2	43.2mx 5.0		5.1																				
42.0			5.0			5.1		4.8		4.8		4.9		4.9		4.8	45.1mx 4.7		4.8																	
44.0			4.3			4.3		3.9		3.9		4.4		4.2		4.6	4.6		4.4	4.4																
46.0			44.7mx 4.2			3.9		3.6		3.6		4.4		4.2		4.6	4.6		4.4	4.4																
48.0					47.6mx 3.7			3.4		3.4		3.5		3.5		47.0mx 4.2	3.8		4.3	4.3																
50.0								3.4		3.4		3.4		3.4		3.4	3.4		49.9mx 4.0	4.0																
52.0									50.5mx 3.4				3.1		3.1		3.2																			
54.0													53.4mx 3.0				3.0																			
56.0																	2.8																			
58.0																																				
60.0																																				

# Luffing Jib Crane



GCH1200

## Jib rated lifting loads

(Unit : metric ton)

Post length(m)		45.25																									
Jib length(m)		45.25																									
Post angle		23.0			26.0			29.0			32.0			35.0			38.0			41.0			44.0				
Working radius(m)	90°	75°	60°	90°	75°	60°	90°	75°	60°	90°	75°	60°	90°	75°	60°	90°	75°	60°	90°	80°	70°	90°	80°	70°			
7.2	20.0			7.7mx 19.0			8.2mx 16.0			8.8mx 15.2			9.3mx 14.0			9.8mx 12.0											
10.0	20.0			18.0			16.0			15.2			14.0			12.0						10.3mx 10.0			10.8mx 8.0		
12.0	20.0			18.0			16.0			15.2			14.0			12.0						10.0			8.0		
14.0	20.0			18.0			16.0			15.2			14.0			12.0						10.0			8.0		
15.0	18.0			18.0			16.0			15.2			14.0			12.0						10.0			8.0		
16.0	16.6			16.5			16.0			17.0mx 15.2			13.5			12.0						10.0			8.0		
18.0	14.3			14.3			14.3			14.2			12.5			12.0						10.0			8.0		
20.0	12.7			12.7			12.7			12.7			11.4			11.1						10.0			8.0		
22.0	11.4			11.4			11.4			11.4			10.5			10.2						10.0			8.0		
24.0	10.3	24.6mx 10.0		10.3	25.8mx 9.5		10.3			10.3			9.6			9.4					9.3	25.0mx 9.0		25.0mx 8.0	26.1mx 7.6		
26.0	25.3mx 9.8	9.5		9.4	9.4		9.4	27.1mx 9.2		9.4			8.8			8.6					8.7	8.7	7.7	7.7	7.0		
28.0		8.8		8.7	8.7		8.9	8.9		8.5	28.4mx 8.3		8.1	29.6mx 7.5		7.9					8.0	8.0	7.0	7.0	7.0		
30.0		8.2		28.2mx 8.6	8.0		7.9	7.9		7.7	7.7		7.4	7.4		7.3	30.9mx 7.1				7.3	7.3	6.3	6.3	6.3		
32.0		7.7		7.4			31.1mx 7.3	7.0		7.0	7.0		6.9	6.9		6.8	6.8				6.7	6.7	5.7	5.7	5.7		
34.0		7.3			6.9			6.5		6.6	6.6		6.4	6.4		6.5	6.5				6.2	6.2	5.3	5.3	5.3		
36.0		6.9			6.5			6.3		6.2	6.2		6.0	6.0		6.1	6.1				5.8	5.8	5.0	5.0	5.0		
38.0		37.1mx 6.7			6.3			6.0		5.8	5.8		5.7	5.7		5.8	5.8				5.4	5.4	39.1m 5.2	4.7	4.7		
40.0			40.4mx 5.4		6.0			5.8		5.5	5.5		5.4	5.4		39.8mx 5.5	5.5				5.1	5.1	5.1	4.4	4.4	40.6mx 4.3	
42.0			4.6				42.3mx 5.0	5.5		5.2	5.2		5.1	5.1		5.1	5.1				5.1	4.8	4.8	4.0	4.1	4.1	
44.0			3.8				4.1	42.8mx 5.2	44.2mx 4.5	4.9	4.9		4.8	4.8		4.8	4.8				4.8	4.6	4.6	3.6	3.9	3.9	
46.0			3.4				3.4	3.4		3.4	3.4		4.4	4.4		4.6	4.6				4.3	4.3	4.5	3.7	3.7	3.7	
48.0			47.8mx 3.3				3.1	3.0		3.0	3.4		3.7	48.1mx 3.7		4.3	4.3				4.0	4.0	3.5	3.5	3.5	3.5	
50.0							2.9	2.8		2.8	3.0		3.4	48.6mx 3.6	3.4	3.4	3.4				3.5	3.5	3.4	3.4	3.4	3.4	
52.0							50.6mx 2.8	2.6		2.8	2.8		3.2	3.2		51.5mx 3.0	2.9				50.9m 3.4	3.2	3.2	3.2	3.2	3.2	
54.0								53.9mx 2.5		2.6	2.6		3.0	3.0		2.7	2.7				3.0	2.8	2.8	2.9	2.9	2.9	
56.0										2.5	2.5		2.8	2.8		2.8	2.8				2.5	2.5	2.8	2.8	2.8	2.8	
58.0										56.4mx 2.4	2.4		2.7	2.7		2.7	2.7				2.3	2.3	2.6	2.6	2.6	2.6	
60.0													59.3mx 2.6	2.6		2.2	2.2				2.2	2.2	2.1	2.1	2.1	2.1	
62.0																						62.2mx 2.0	2.0				61.0mx 2.6
64.0																											

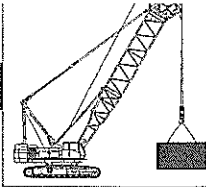
Post length(m)		51.25																									
Jib length(m)		51.25																									
Post angle		23.0			26.0			29.0			32.0			35.0			38.0			41.0			44.0				
Working radius(m)	90°	75°	60°	90°	75°	60°	90°	75°	60°	90°	80°	70°	90°	80°	70°	90°	80°	70°	90°	80°	70°	90°	80°	70°			
7.2	20.0			7.7mx 19.0			8.2mx 16.0			8.8mx 15.2			9.3mx 14.0			9.8mx 12.0											
10.0	20.0			18.0			16.0			15.2			14.0			12.0						10.3mx 10.0			10.8mx 8.0		
12.0	20.0			18.0			16.0			15.2			14.0			12.0						10.0			8.0		
14.0	20.0			18.0			16.0			15.2			14.0			12.0						10.0			8.0		
15.0	18.0			18.0			16.0			15.2			14.0			12.0						10.0			8.0		
16.0	16.6			16.5			16.0			17.0mx 15.2			13.4			12.0						10.0			8.0		
18.0	14.3			14.3			14.3			14.2			12.2			10.9						10.0			8.0		
20.0	12.7			12.7			12.7			12.7			11.0			9.9						10.0			8.0		
22.0	11.4			11.4			11.4			11.4			9.8			9.0						9.6			8.0		
24.0	10.3			10.3			10.3			10.3	10.3		8.8			8.1	25.1mx 7.7				8.8			25.0mx 8.0	27.1mx 7.3		
26.0	25.3mx 9.8	26.1mx 9.5		9.4	27.4mx 8.9		9.4			9.4	9.4		8.0			7.4	7.4				8.2	26.1mx 8.1	7.7	7.7	7.0		
28.0		8.8		8.7	8.7		8.9	28.7mx 8.6		8.5	8.5		7.3			6.7	6.7				7.5	7.5	7.0	7.0	7.0		
30.0		8.1		28.2mx 8.7	8.1		7.8	7.8		7.7	7.7		6.7	6.7		6.2	6.2				6.9	6.9	6.3	6.3	6.3		
32.0		7.6		7.4			31.1mx 7.1	6.7		7.0	7.0		6.2	6.2		5.7	5.7				6.2	6.2	5.7	5.7	5.7		
34.0		7.2			6.8			6.2		6.6	6.6		5.8	5.8		5.3	5.3				5.7	5.7	5.3	5.3	5.3		
36.0		6.8			6.3			6.0		6.2	36.6mx 6.1		5.5	5.5		5.0	5.0				5.3	5.3	5.0	5.0	5.0		
38.0		6.3			6.0			5.8		5.8	5.8		5.8	36.9mx 6.3	5.1	38.1mx 5.1	4.7	4.7			4.9	4.9	4.7	4.7	4.7		
40.0		38.5mx 6.1			5.8			5.6		5.5	5.5		4.9	4.9		4.4	4.4				4.6	4.6	4.4	4.4	4.4		
42.0			43.4mx 4.0		41.4mx 5.4		5.3	5.3		5.2	5.2		4.6	4.6		4.2	4.2				4.3	4.3	4.0	4.1	4.1	4.1	
44.0			3.7		45.3mx 3.5		5.0	5.0		4.4	4.4		4.3	4.3		4.0	4.0				4.2	4.2	3.6	3.9	3.9	3.9	
46.0			3.3		3.3		44.3mx 4.3	47.3mx 2.9		4.0	4.0		4.0	45.8mx 4.0	4.0	3.8	3.8				3.9	3.9	3.5	3.7	3.7	3.7	
48.0			3.1		2.9		2.8	2.8		3.8	3.8		3.7	3.7		3.6	3.6				3.6	3.6	3.5	3.5	3.5	3.5	
50.0			3.0		2.7		2.5	2.5		3.6	3.6		3.4	3.4		3.4	3.4				3.4	3.4	3.4	3.4	3.4	3.4	
52.0			50.7mx 2.3		2.5		2.3	2.3		3.2	3.2		3.2	3.2		3.0	3.0				3.2	3.2	3.2	3.2	3.2	3.2	
54.0					53.6mx 2.4		2.2	2.2		2.1	2.1		3.0	3.0		2.8	2.8				2.9	2.9	3.1	3.1	3.1	3.1	
56.0							2.1	2.1					54.3mx 3.0	3.0		2.8	2.8				2.7	2.7	2.6	2.6	2.6	2.6	
58.0							56.6mx 2.1	2.1								57.2mx 2.8	2.8				2.5	2.5	2.5	2.5	2.5	2.5	
60.0																						60.1mx 2.5	2.5				2.3
62.0																											63.0mx 2.2
64.0																											

- Notes
- Above rated loads are based on firm level ground, within 78% of tipping load at any point 360° throughout and with front stability of 1.15 or more.
  - The actual lifting loads must be reduced following hook block(main and jib)and other lifting devices For post For tower jib
    - 40ton hook block→0.45ton
    - 30ton hook block→0.75ton
    - 11ton hook block→0.40ton
  - Above rated lifting loads are removed condition of the top sheave. When work installed condition of the top sheave, must be deducted 0.50 ton from above value.
  - Depending on the number of part lines, rated load is limited as follows:
    - 1-part line→up to 11 ton
    - 2-part line→up to 20 ton
  - The angle of the center line of the post and the center line of the jib(offset angle) must not be less than 10°.
  - The angle of the center line of the jib to level ground(tower jib angle) must not be less than 15° under loaded conditions.
  - Rated loads shown in bold lines are based on structural strength factors.
  - 7.11ton hook block can not use with 23m jib.



# Luffing Jib Crane

CCH200



## Post rated lifting loads (without jib)

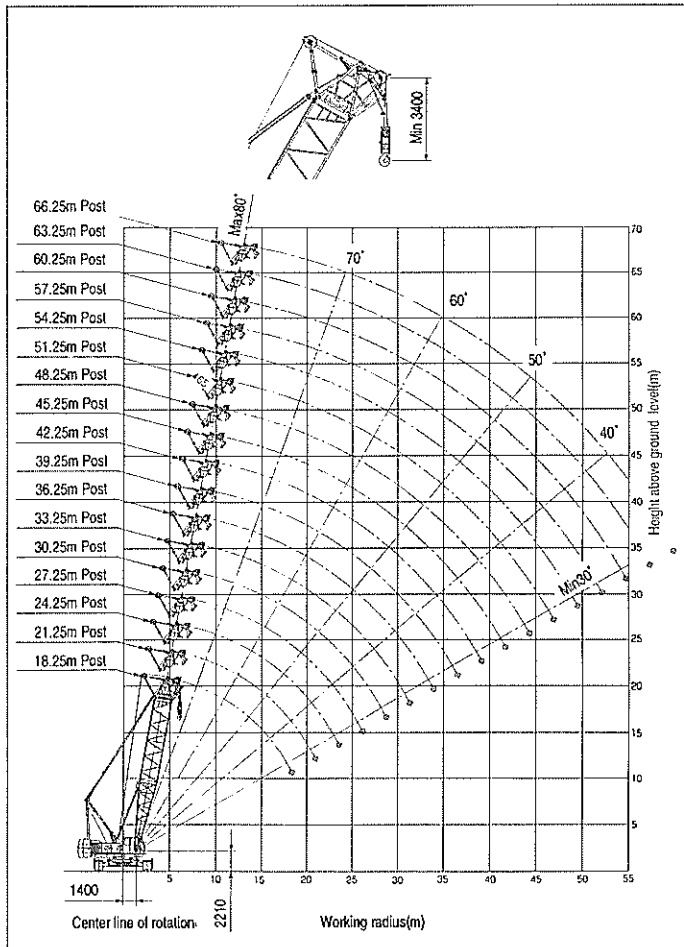
(Unit : metric ton)

Post length(m) Working radius(m)	18.25	21.25	24.25	27.25	30.25	33.25	36.25	39.25	42.25	45.25	48.25	51.25	54.25	57.25	60.25	63.25	66.25		
6.0	6.1m×40.0	6.6m×40.0																	
7.0	40.0	40.0	7.2m×40.0	7.7m×40.0															
8.0	40.0	40.0	40.0	40.0	8.2m×40.0	8.7m×40.0													
9.0	40.0	40.0	40.0	40.0	40.0	40.0	9.2m×40.0	9.8m×40.0	10.3m×40.0	10.8m×40.0									
10.0	11.9m×40.0	11.9m×40.0	11.9m×40.0	11.9m×40.0	11.9m×40.0	11.8m×40.0	11.8m×40.0	11.8m×40.0	11.8m×40.0	11.8m×40.0	11.3m×30.0	11.8m×30.0							
12.0	39.8	39.7	39.6	39.5	39.4	39.3	39.2	39.1	39.0	38.9	30.0	30.0	12.4m×30.0	12.9m×30.0	13.4m×25.0	13.9m×18.0			
14.0	32.1	32.0	31.9	31.8	31.7	31.6	31.5	31.4	31.3	31.2	14.3m×30.0	14.3m×30.0	14.2m×30.0	14.2m×30.0	25.0	18.0	14.4m×13.0		
16.0	26.7	26.6	26.5	26.4	26.3	26.2	26.1	26.0	25.9	25.8	25.7	25.5	25.4	25.3	16.1m×25.0	18.0	13.0		
18.0	22.8	22.7	22.6	22.5	22.3	22.2	22.1	22.0	21.9	21.8	21.7	21.6	21.4	21.3	21.3	18.0	13.0		
20.0	18.6m×21.8	19.6	19.5	19.4	19.3	19.2	19.1	19.0	18.8	18.7	18.6	18.5	18.4	18.3	18.2	20.1m×18.0	13.0		
22.0		21.2m×18.1	17.1	17.0	16.9	16.8	16.6	16.5	16.4	16.3	16.2	16.1	15.9	15.8	15.7	15.6	13.0		
24.0			23.7m×15.4	15.0	14.9	14.8	14.7	14.6	14.4	14.3	14.2	14.1	14.0	13.9	13.8	13.7	24.7m×13.0		
26.0				13.4	13.3	13.2	13.0	12.9	12.8	12.7	12.6	12.4	12.3	12.2	12.1	12.0	11.9		
28.0				26.3m×13.2	11.9	11.8	11.7	11.6	11.4	11.3	11.2	11.1	10.9	10.8	10.7	10.6	10.5		
30.0					28.9m×11.4	10.6	10.5	10.4	10.3	10.1	10.0	9.9	9.8	9.7	9.6	9.5	9.4		
32.0						31.5m×9.9	9.5	9.4	9.2	9.1	9.0	8.9	8.7	8.6	8.5	8.4	8.3		
34.0							8.6	8.5	8.4	8.2	8.1	8.0	7.9	7.8	7.7	7.6	7.5		
36.0							34.1m×8.5	7.7	7.6	7.5	7.3	7.2	7.1	7.0	6.9	6.8	6.7		
38.0								36.7m×7.5	6.9	6.8	6.6	6.5	6.4	6.3	6.2	6.1	6.0		
40.0									39.3m×6.5	6.2	6.0	5.9	5.8	5.7	5.6	5.5	5.4		
42.0										41.9m×5.6	5.5	5.4	5.2	5.1	5.0	4.9	4.8		
44.0											5.0	4.9	4.7	4.6	4.5	4.4	4.2		
46.0												44.5m×4.9	4.4	4.2	4.1	3.9	3.7		
48.0													47.1m×4.1	3.7	3.6	3.4	3.2		
50.0														49.7m×3.3	3.1	3.0	2.8	2.7	
52.0															2.7	2.6	2.4	2.3	
54.0																52.3m×2.6	2.2	2.0	1.9

### Notes

- Above rated loads are based on firm level ground within 78% of tipping load at any point 360° throughout and with front stability of 1.15 or more.
- The actual lifting loads must be reduced following hook block (main and jib) and other lifting devices.
  - 11ton hook block---0.40ton
  - 40ton hook block---0.95ton
  - 30ton hook block---0.75ton
- Depending on the number of part lines, rated load is limited as follows.
  - 1-part line-----up to 11.0ton
  - 2-part line-----up to 20.0ton
  - 3-part line-----up to 30.0ton
  - 4-part line-----up to 40.0ton

## Working range (No-loaded condition)



# Luffing Tower Crane

CC1200

## Specifications

Max. lifting capacity × working radius		20metric tons × 14m	
Max. lift above ground level		92m(51.25m post + 44m jib)	
Rope speed	Main drum hoist/lowering	* 100~50/50~25m/min	
	Post hoist/lowering	* 60~30m/min	
	Jib hoist/lowering	* 100~50/50~25m/min	
Part line	Main drum hoist	Hook block capacity × Part line	20ton × 2
		Hook block capacity × Part line	11ton × 1
	Post hoist		14
	Jib hoist		8
Counterweight		50ton	
Total operating weight (with 51.25m post + 44mjib + 20ton hook)		135.5ton(Approx.)	
Average ground bearing pressure		1.03kgf/cm <sup>2</sup>	

Note : The rope speed changes depending on the load.

## Combination of post and jib, post angle

Post length(m) Jib length(m)	27.25	30.25	33.25	36.25	39.25	42.25	45.25	48.25	51.25
23	⊙	⊙	⊙	⊙	⊙	⊙	⊙	⊙	⊙
26	⊙	⊙	⊙	⊙	⊙	⊙	⊙	⊙	⊙
29		⊙	⊙	⊙	⊙	⊙	⊙	⊙	⊙
32			⊙	⊙	⊙	⊙	⊙	⊙	⊙
35				⊙	⊙	⊙	⊙	⊙	⊙
38					⊙	⊙	⊙	⊙	⊙
41						⊙	⊙	⊙	⊙
44							⊙	⊙	⊙

Note : ⊙ : Possible combination

## Wire rope

Place of use	Rope diameter (mm)	Guaranteed strength(t)	Rope type
Hook hoist	φ26	61.0	PS(19) + 39 × P·7
Post hoist	φ22	36.3	IWRC6 × WS(31)
Jib hoist	φ26	57.8	T IWRC6 × WS(31)
Post suspension	φ31.5	74.9	IWRC6 × Fi(29)
Jib suspension	φ34	86.7	IWRC6 × Fi(29)
Strut suspension	φ34	86.7	IWRC6 × Fi(29)

Note : Wire rope length to be decided according to the ordered boom length.

## Post Composition

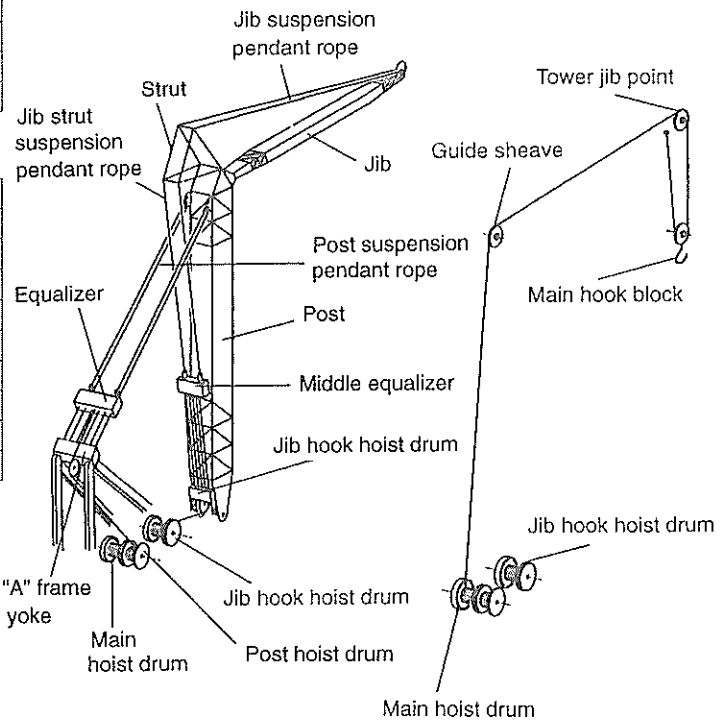
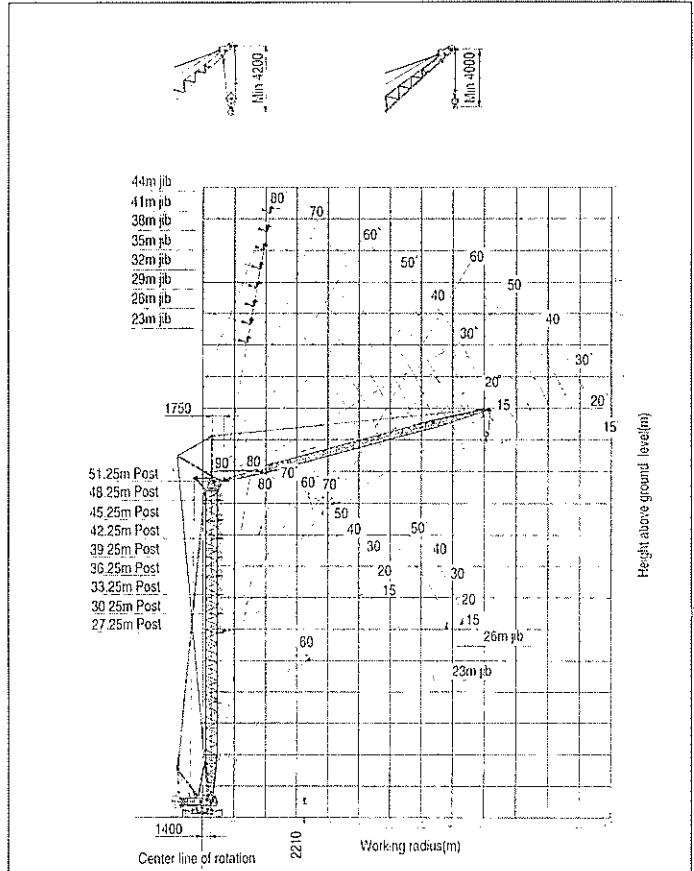
Post length(m)	Post composition(m)
27.25	7.5(inner) + *9+9+1.75(outer)
30.25	7.5 + *9.0+3.0+9.0+1.75
33.25	7.5 + *9.0+6.0+9.0+1.75
36.25	7.5 + *9.0+9.0+9.0+1.75
39.25	7.5 + *9.0+3.0+9.0+9.0+1.75
42.25	7.5 + *9.0+6.0+9.0+9.0+1.75
45.25	7.5 + *9.0+3.0+6.0+9.0+9.0+1.75
48.25	7.5 + *9.0+6.0+6.0+9.0+9.0+1.75
51.25	7.5 + *9.0+3.0+6.0+6.0+9.0+9.0+1.75

Notes  
1.9.0m insert post (\*9.0) is installed to the middle equalizer guide rail.  
2.3.0~9.0m insert post including jib strut suspension pendant rope.

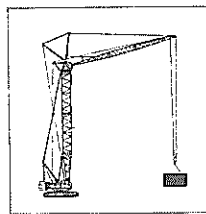
## Jib Composition

Jib length(m)	Jib composition(m)
23	8(inner) + 6 + 9(outer)
26	8 + 3 + 6 + 9
29	8 + 3 + 9 + 9
32	8 + 6 + 9 + 9
35	8 + 9 + 9 + 9
38	8 + 3 + 9 + 9 + 9
41	8 + 6 + 9 + 9 + 9
44	8 + 3 + 6 + 9 + 9 + 9(outer)

## Working range (No-loaded condition)



# Luffing Tower Crane



**CC1200**

(Unit : metric ton)

## Jib rated lifting loads

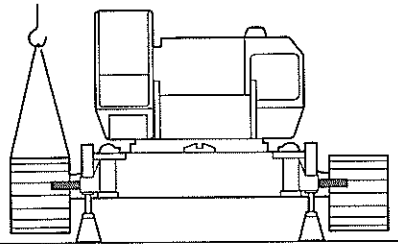
Post length(m)	27.25																		39.25																													
	23.0						26.0						23.0						26.0						29.0						32.0						35.0						38.0					
	90°	75°	60°	90°	75°	60°	90°	75°	60°	90°	75°	60°	90°	75°	60°	90°	75°	60°	90°	75°	60°	90°	75°	60°	90°	75°	60°	90°	75°	60°	90°	75°	60°															
Working radius(m)	90°	75°	60°	90°	75°	60°	90°	75°	60°	90°	75°	60°	90°	75°	60°	90°	75°	60°	90°	75°	60°	90°	75°	60°	90°	75°	60°	90°	75°	60°	90°	75°	60°	90°	75°	60°	90°	75°	60°									
7.2	20.0			7.7m×18.0			20.0			20.0			7.7m×18.0			18.0			18.0			8.2m×16.0			15.2			15.2			8.8m×15.2			14.0			14.0											
10.0	20.0			18.0			20.0			20.0			18.0			18.0			16.0			16.0			15.2			15.2			14.0			14.0			12.0											
12.0	20.0			18.0			20.0			20.0			18.0			18.0			16.0			16.0			15.2			15.2			14.0			14.0			12.0											
14.0	20.0			18.0			20.0			20.0			18.0			18.0			16.0			16.0			15.2			15.2			14.0			14.0			12.0											
15.0	18.0			18.0			18.0			18.0			16.5			16.5			16.0			16.0			15.2			15.2			14.0			13.5			12.0											
16.0	16.6			16.5			16.6			16.6			14.3			14.3			14.3			14.3			14.2			14.2			12.5			12.0														
18.0	14.3	19.9m×12.8		14.3			14.3			14.3			12.7			12.7			12.7			12.7			12.7			12.7			11.4			11.4			11.1											
20.0	12.7	12.7		12.7	21.2m×11.9		12.7			12.7			11.4			11.4			11.4			11.4			11.4			11.4			10.5			10.2			10.2											
22.0	11.4	11.4		11.4	11.4		11.4	23.0m×10.8		11.4			11.4			11.4			11.4			11.4			11.4			11.4			9.6			9.4			9.4											
24.0	10.3	10.3		10.3	10.3		10.3	10.3		10.3	24.3m×10.2		10.3	25.5m×9.6		10.3			10.3			10.3			10.3			9.4	26.8m×9.0		8.8			8.6			8.6											
26.0	25.3m×9.8	9.5		9.4	9.4		25.3m×9.8	9.5		9.4	9.4		9.4	9.4		9.4	9.4		9.4	9.4		9.4	9.4		9.4	9.4		8.5	8.5		8.1	28.1m×8.0		7.9	29.4m×7.4		7.2											
28.0	9.0			8.8	8.8		9.0			9.0			8.7	8.7		8.9	8.9		8.9	8.9		8.9	8.9		8.9	8.9		8.5	8.5		8.1	8.1		7.9	7.9		7.7											
30.0	8.5	31.4m×8.2		8.8	8.8		8.5			8.5			8.7	8.7		8.9	8.9		8.9	8.9		8.9	8.9		8.9	8.9		8.5	8.5		8.1	8.1		7.9	7.9		7.7											
32.0	8.1	8.1		8.2	8.2		8.1			8.1			8.7	8.7		8.9	8.9		8.9	8.9		8.9	8.9		8.9	8.9		8.5	8.5		8.1	8.1		7.9	7.9		7.7											
34.0	32.3m×8.0	7.8		7.9	7.9		7.8			7.8			7.4			7.4			7.4			7.4			7.4			7.0	7.0		6.9	6.9		6.7	6.7		6.7											
36.0		7.3		7.6	7.6		7.4			7.4			7.1			7.1			7.1			7.1			7.1			6.6	6.6		6.2	6.2		6.0	6.0		5.8	5.8										
38.0		6.6		6.7	6.7		6.7			6.5			6.5			6.8			6.8			6.8			6.8			6.4	6.4		6.0	6.0		5.7	5.7		5.4	5.4										
40.0		38.7m×6.3		6.3	6.3		6.3			6.3			6.5			6.8			6.8			6.8			6.8			6.4	6.4		6.0	6.0		5.7	5.7		5.4	5.4										
42.0				41.6m×6.0	41.6m×6.0		6.0			6.0			6.5			6.8			6.8			6.8			6.8			6.4	6.4		6.0	6.0		5.7	5.7		5.4	5.4										
44.0							4.3			4.3			4.3			4.3			4.3			4.3			4.3			4.9	4.9		4.6	4.6		4.4	4.4		4.4											
46.0							4.3			4.3			4.3			4.3			4.3			4.3			4.3			4.9	4.9		4.6	4.6		4.4	4.4		4.4											
48.0							4.3			4.3			4.3			4.3			4.3			4.3			4.3			4.9	4.9		4.6	4.6		4.4	4.4		4.4											
50.0							4.3			4.3			4.3			4.3			4.3			4.3			4.3			4.9	4.9		4.6	4.6		4.4	4.4		4.4											
52.0							4.3			4.3			4.3			4.3			4.3			4.3			4.3			4.9	4.9		4.6	4.6		4.4	4.4		4.4											
54.0							4.3			4.3			4.3			4.3			4.3			4.3			4.3			4.9	4.9		4.6	4.6		4.4	4.4		4.4											
56.0							4.3			4.3			4.3			4.3			4.3			4.3			4.3			4.9	4.9		4.6	4.6		4.4	4.4		4.4											
58.0							4.3			4.3			4.3			4.3			4.3			4.3			4.3			4.9	4.9		4.6	4.6		4.4	4.4		4.4											
60.0							4.3			4.3			4.3			4.3			4.3			4.3			4.3			4.9	4.9		4.6	4.6		4.4	4.4		4.4											
62.0							4.3			4.3			4.3			4.3			4.3			4.3			4.3			4.9	4.9		4.6	4.6		4.4	4.4		4.4											
64.0							4.3			4.3			4.3			4.3			4.3			4.3			4.3			4.9	4.9		4.6	4.6		4.4	4.4		4.4											

Post length(m)	51.25																																															
	23.0						26.0						29.0						32.0						35.0						38.0						41.0						44.0					
	90°	75°	60°	90°	75°	60°	90°	75°	60°	90°	75°	60°	90°	75°	60°	90°	75°	60°	90°	75°	60°	90°	75°	60°	90°	75°	60°	90°	75°	60°	90°	75°	60°															
Working radius(m)	90°	75°	60°	90°	75°	60°	90°	75°	60°	90°	75°	60°	90°	75°	60°	90°	75°	60°	90°	75°	60°	90°	75°	60°	90°	75°	60°	90°	75°	60°	90°	75°	60°	90°	75°	60°	90°	75°	60°									
7.2	20.0			7.7m×18.0			20.0			20.0			16.0			16.0			15.2			15.2			14.0			14.0			14.0			14.0			14.0											
10.0	20.0			18.0			20.0			20.0			16.0			16.0			15.2			15.2			14.0			14.0			14.0			14.0			14.0											
12.0	20.0			18.0			20.0			20.0			16.0			16.0			15.2			15.2			14.0			14.0			14.0			14.0			14.0											
14.0	20.0			18.0			20.0			20.0			16.0			16.0			15.2			15.2			14.0			14.0			14.0			14.0			14.0											
15.0	18.0			18.0			18.0			18.0			16.0			16.0			15.2			15.2			14.0			14.0			14.0			14.0			14.0											
16.0	16.6			16.5			16.6			16.6			16.0			16.0			15.2			15.2			14.0			14.0			14.0			14.0			14.0											
18.0	14.3			14.3			14.3			14.3			14.3			14.2			14.2			14.2			13.4			13.4			12.0			12.0			12.0											
20.0	12.7			12.7			12.7			12.7			12.7			12.7			12.7			12.7			11.0			11.0			9.9			9.9			9.9											
22.0	11.4			11.4			11.4			11.4			11.4			11.4			11.4			11.4			9.8			9.8			9.0			9.0			9.0											
24.0	10.3			10.3			10.3			10.3			10.3			10.3			10.3			10.3			8.8			8.8			8.1	25.1m×7.7		8.8			8.8											
26.0	25.3m×9.8	26.1m×9.5		9.4	27.4m×8.9		9.4			9.4			9.4			9.4			9.4			9.4			8.0			8.0			7.4	7.4		8.2	26.1m×8.1		7.7	27.1m×7.3										
28.0	8.8			8.7	8.7																																											

## Self dismantling method for convenient transportation

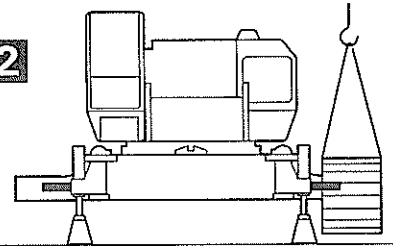
Attachments, counterweights and crawler frames can be dismantled to lighten the weight, shorten the width and lower the height of the base machine for convenient transportation.

1



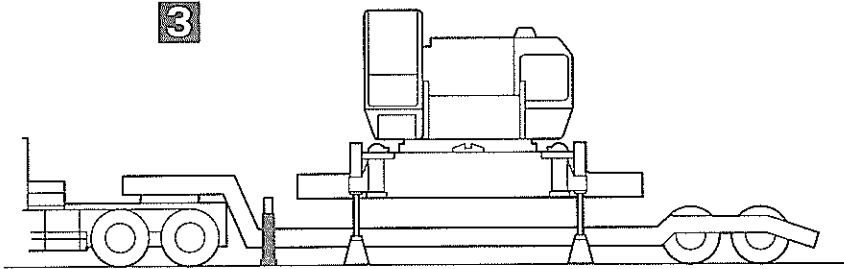
- Remove attachments and counterweights.
- Open and lock jack-up boom (standard equipment)
- Disconnect hydraulic hoses of traction motor drive.
- Set pedestals on firm level ground.
- Lift up base machine slightly by jack-up cylinder.
- Suspend crawler frame (approx.13ton) with another crane.
- Push out and remove crawler frame by later cylinder (standard equipment).

2



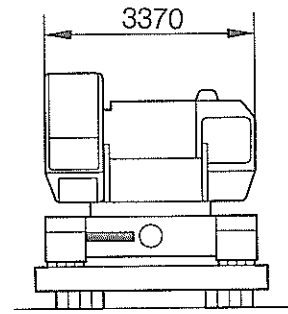
- Follow the same procedures to remove the other side of the crawler frame.

3



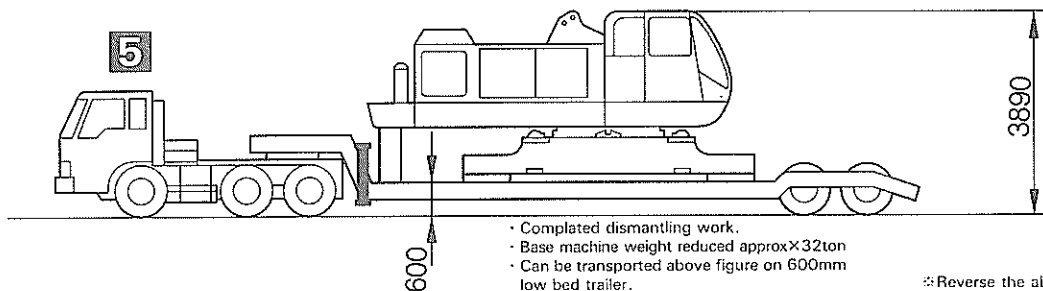
- Lift up base machine by jack-up cylinders to provide enough ground clearance for receiving trailer underneath.

4



- Retract jack-up cylinders to bring the base machine in contact with the trailer bed, then turn the superstructure 90 to direct the operator's cab in the opposite direction as trailer.

5



- Completed dismantling work.
- Base machine weight reduced approx×32ton
- Can be transported above figure on 600mm low bed trailer.

∴ Reverse the above procedures to re-assemble.

### Optional Equipment

Moment limiter (overload prevention)  
Warning at 90% of rated load  
Warning at optionally set boom angle  
Shockless stop, load hoist and boom hoist or lowering at limited condition  
Insert boom (w/pendant cable) 3m, 6m, 9m  
13m basic jib, 3m, 6m insert (w/pendant rope)  
Auxiliary jib  
60 ton, 50 ton, and 30 ton hook block  
11 ton hook block for jib  
Combustion type heater

Air conditioner  
Wireless phone  
Yellow rotary light  
Boom point clearance light  
Bullhorn  
Catwalk  
Catwalk (w/handrail)  
Offlimit fence  
Electrical type level indicator  
Safety guard on boom  
Reeving winch  
Hydraulic type tagline

Rope guide roller on boom (additional)  
Drum roller  
Name plate (both side of outer boom and cab)  
Fire extinguisher  
Flash light for inspection  
Hoist drum mirror  
Boom foot pin cylinder  
Fulcrum plate for rising of attachment  
Monitor TV (watching rear left and drum)  
Monitor TV (watching lifting load)  
Large size tool box with caster  
Sling wire for disassembling and assembly

**IHI** Ishikawajima Construction Machinery Co., Ltd.  
9-7, Yaesu 2-chome, Chuo-ku, Tokyo 104, Japan  
Telephone: 03-3277-3975 Telefax: 03-3277-3960, 03-3277-4410

Specifications are subject to change without notice due to technical improvements or modifications.  
Distributed by

