

QUY150A

液压履带式起重机

HYDRAULIC CRAWLER CRANE



抚顺挖掘机制造有限责任公司
FUSHUN EXCAVATOR CORPORATION LTD.



QUY150A

起重臂下 严禁站人



QY150A

液压履带式起重机

HYDRAULIC CRAWLER CRANE

■ QY150A液压履带式起重机是我公司引进的日立建机技术制造的具有世界同类机型水平的产品。QY150A Hydraulic Crawler Crane is manufactured on the basis of importing the technology of Hitachi Construction Machinery. It has advanced level with the same kind of machine in the world.

■ 该机采用全功率变量液压系统，全液压传动。关键部件柴油机、减速机、主泵、马达、主阀和力矩限制器均采用进口件。工作稳定，性能可靠。

This machine adopts full power variable displacement hydraulic system and full hydraulic transmission. We apply imported key components, such as engine, reducers, main pumps, motors, main valves and moment limiter. It has the characteristics of smooth working and reliable performance.





功能简介

Function brief introduction

- 主系统采用交叉变量泵控系统，主机具有微速功能，可满足各种作业速度要求和用于精确安装。

Main system is intersection variable displacement pump controlling system. Main machine has the function of fine inching speed which can satisfy the requirements of variety operation speed and precision installing.

- 主、副卷扬独立驱动。

Independent driving main and auxiliary winches.

- 重力下放功能，工作效率高又节省能耗

The function of free fall improves work efficiency and saves energy.





安全装置

Safety devices

■ 全自动电子控制的力矩限制器

Full auto electric control moment limiter

■ 提升机构设常闭制动器、棘爪锁定装置

Hoisting device is equipped with normal close brake and pawl locking device.

■ 臂架安装有限位自动停止装置和自动报警装置

Limit auto stop device and auto-alarm device are installed on the boom.



首都机场三号航站楼工程
实景拍摄

操作舒适

Comfortable operation

- 先导比例控制手柄，操纵简单方便。

Easy operation is realized with pilot proportional control lever.

- 空调装置保证司机室内温度适宜

Suitable temperature in the cab can be achieved by air conditioner.





QUY150A

危险
作业半径内禁止站人

技术参数

Specifications

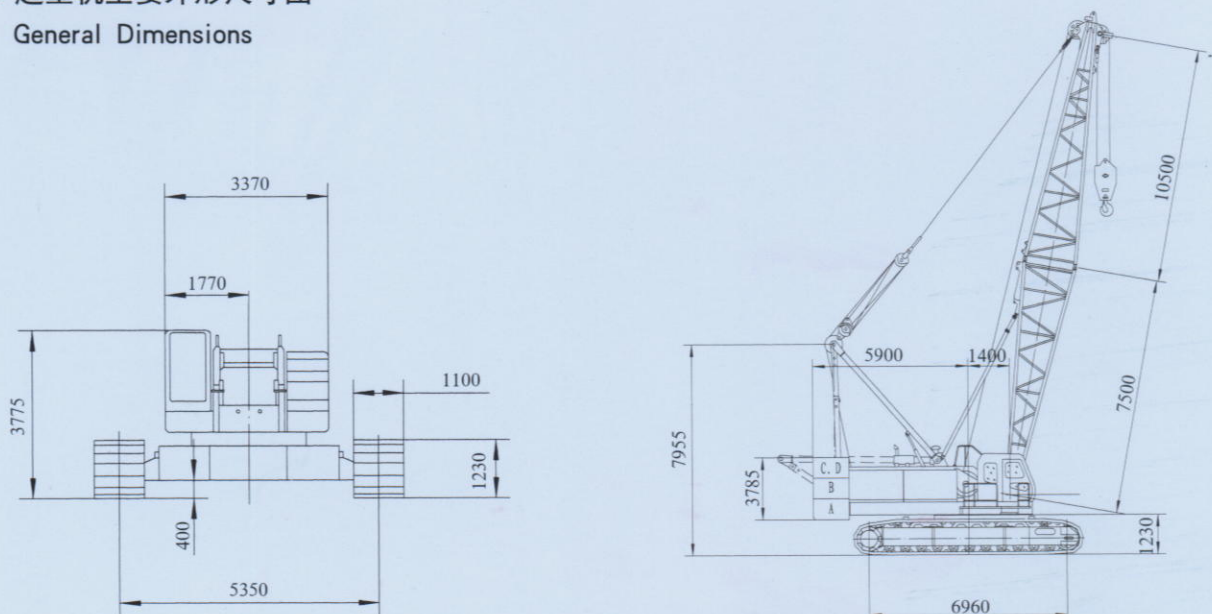
QUY150A 主要技术参数

QUY150A Technical Data

项 目 Item	数值 Data	单位 Unit	项 目 Item	数值 Data	单位 Unit
最大起重量 Max. Lifting	150	t	起重力矩 Lifting Torque	805	t · m
主臂长度 Length of Main Boom	18-81	m	回转速度 Slewing Speed	高(H) 2 低(L) 1	rpm
主臂加副臂最大长度 Length of Main Boom+Fly Jib	69+31	m	行走速度 Travel Speed	高(H) 2 低(L) 0.5	km/h
起重臂变幅角度 Boom Hoist Angle	30~80	°	爬坡能力 Gradeability	30	%
提升钢绳速度※ Hook Hoisting speed	高(H) 60 低(L) 30	m/min	柴油机额定输出功率 Engine Output	231/2100	KW/rpm
下降钢绳速度※ Hook Lowering speed	高(H) 60 低(L) 30	m/min	主提升倍率 Main Hoisting line parts	16	
起重臂上升钢绳速度※ Boom Hoisting rope speed	22 × 2	m/min	接地比压 Ground Pressure	0.093	Mpa
起重臂下降钢绳速度※ Boom Lowering speed	22 × 2	m/min	整机质量 Max. Machine weight	150.5	t
主机外形尺寸 General Dimensions L × W × H	13910 × 6450 × 3775	mm	配重质量 Counter Weight	54.6	t

注：※速度随机载不同而变化。

QUY150A 起重机主要外形尺寸图
General Dimensions



QUY150A 主臂额定起重性能表

Load Chart of QUY150A with Standard Boom Configuration

单位 Unit: t

工作半径 (m) Working radius	18	21	24	27	30	33	36	39	42	45	48	51	54	57	60	63	66	69	75	81
5	150.0	5.4m x 131.4t																		
6	133.0	126.0	5.9m x 116.8t	6.4m x 103.0t																
7	115.0	114.8	104.7	98.8	6.9m x 92.9t	7.5m x 83.3t														
8	94.2	94.0	93.9	93.8	87.5	81.5	75.6	8.5m x 68.7t												
9	78.5	78.3	78.2	78.1	77.9	77.8	72.5	66.7	9.1m x 62.6t	9.6m x 57.0t										
10	67.2	67.0	66.9	66.7	66.6	66.5	66.4	62.9	60.4	56.2	10.1m x 52.4t	10.6m x 47.9t	11.1m x 44.2t	11.7m x 40.6t						
12	52.0	51.8	51.6	51.5	51.3	51.2	51.1	51.0	50.8	50.7	49.4	45.8	42.9	40.2	12.5m x 38.1t	13.0m x 34.0t	13.5m x 30.6t	27.5	15.0m x 22.0t	
14	42.2	42.0	41.8	41.7	41.5	41.4	41.3	41.1	40.9	40.9	40.8	40.7	40.5	37.6	35.6	32.6	30.0	27.5	21.5	20.0
16	35.5	35.2	35.0	34.8	34.6	34.5	34.4	34.3	34.1	34.0	33.9	33.8	33.6	33.5	32.3	29.9	27.8	25.7	20.5	19.1
18		30.2	30.0	29.8	29.6	29.5	29.4	29.2	29.0	28.9	28.8	28.7	28.6	28.4	24.9	24.8	23.3	22.7	19.5	18.2
20		19.7m x 25.9t	26.2	26.0	25.8	25.6	25.5	25.2	25.1	25.1	25.0	24.5	24.7	24.5	24.9	24.8	21.6	20.2	18.4	17.2
22			23.2	23.0	22.7	22.6	22.5	22.2	22.1	22.0	21.9	21.8	21.6	21.4	21.8	21.6	18.9	17.4	16.2	
24			22.3m x 22.7t	20.6	20.3	20.1	20.0	19.8	19.6	19.5	19.4	19.3	19.1	18.9	19.3	19.1	16.8	15.2	14.5	
26				24.9m x 19.6t	18.3	18.1	18.0	17.8	17.6	17.5	17.4	17.2	17.1	16.9	17.2	17.0	16.8	16.8	16.4	15.2
28					27.5m x 17.0t	16.4	16.3	16.0	15.9	15.8	15.6	15.5	15.3	15.2	15.4	15.2	15.0	15.0	14.6	14.5
30						15.0	14.9	14.5	14.5	14.3	14.2	14.0	13.9	13.7	13.9	13.7	13.5	13.5	13.1	12.9
32						30.1m x 14.9t	13.6	13.3	13.2	13.0	12.9	12.8	12.6	12.4	12.6	12.4	12.2	12.2	11.8	11.6
34							32.7m x 13.2t	12.5	12.1	12.0	11.8	11.7	11.5	11.3	11.4	11.3	11.1	11.1	10.6	10.5
36								35.3m x 11.7t	11.1	11.0	10.9	10.7	10.5	10.3	10.3	10.3	10.1	10.1	9.6	9.5
38									37.9m x 10.4t	10.2	10.0	9.9	9.7	9.5	9.6	9.4	9.2	9.2	8.7	8.5
40										9.4	9.3	9.1	8.9	8.7	8.8	8.6	8.4	8.4	7.8	7.6
42										40.5m x 9.3t	8.6	8.5	8.2	8.1	8.1	7.9	7.7	7.6	7.1	6.8
44											43.1m x 8.3t	7.9	7.6	7.5	7.4	7.2	7.0	6.9	6.3	6.1
46												45.7m x 7.4t	7.1	6.8	6.6	6.6	6.3	6.2	5.7	5.4
48													6.5	6.3	6.0	6.0	5.8	5.7	5.1	4.8
50													48.3m x 6.4t	5.8	5.5	5.2	5.2	5.1	4.6	4.3
52														50.9m x 5.6t	5.2	5.0	4.8	4.6	4.1	3.8
54															53.5m x 4.9t	4.5	4.3	4.2	3.6	3.3
56																4.1	3.9	3.8	3.2	2.9
58																56.1m x 4.0t	3.6	3.4	2.8	2.5
60																	58.7m x 3.4t	3.1	2.5	2.2

备注(Notes)

抚顺挖掘机制造有限责任公司

地址：辽宁省抚顺市顺城区双阳路2号

邮编：113126

<http://www.cnfuwa.com>

销售公司电话：+86-413-7647 989/7642 419

传真：+86-413-7642 419

售后服务中心电话：+86-413-7641 727

电子信箱：sale@cnfuwa.com

进出口公司电话：+86-413-7649 117/7642 766

传真：+86-413-7642 766

电子信箱：export@cnfuwa.com

免费服务电话：800-890-0009

FUSHUN EXCAVATOR CORPORATION LTD.

Add:No.2 Shuangyang Road, Shuncheng District, Fushun

Liaoning, China

p.c. 113126

<http://www.cnfuwa.com>

China Market Sale Dept. Tel: +86-413-7647 989 / 7642 419

Fax: +86-413-7642 419

After sale Service Dept. Tel: +86-413-7641 727

E-mail: sale@cnfuwa.com

Import & Export Dept. Tel: +86-413-7649 117 / 7642 766

Fax: +86-413-7642 766

E-mail: export@cnfuwa.com

Free Service Tel: 800-890-0009

技术参数如有更改恕不另行通知

Specifications may vary without prior notice